



Overview of Metropolitan's Water Supply Allocation Plan

Water Planning and Stewardship Committee

Item 6b

October 11, 2021

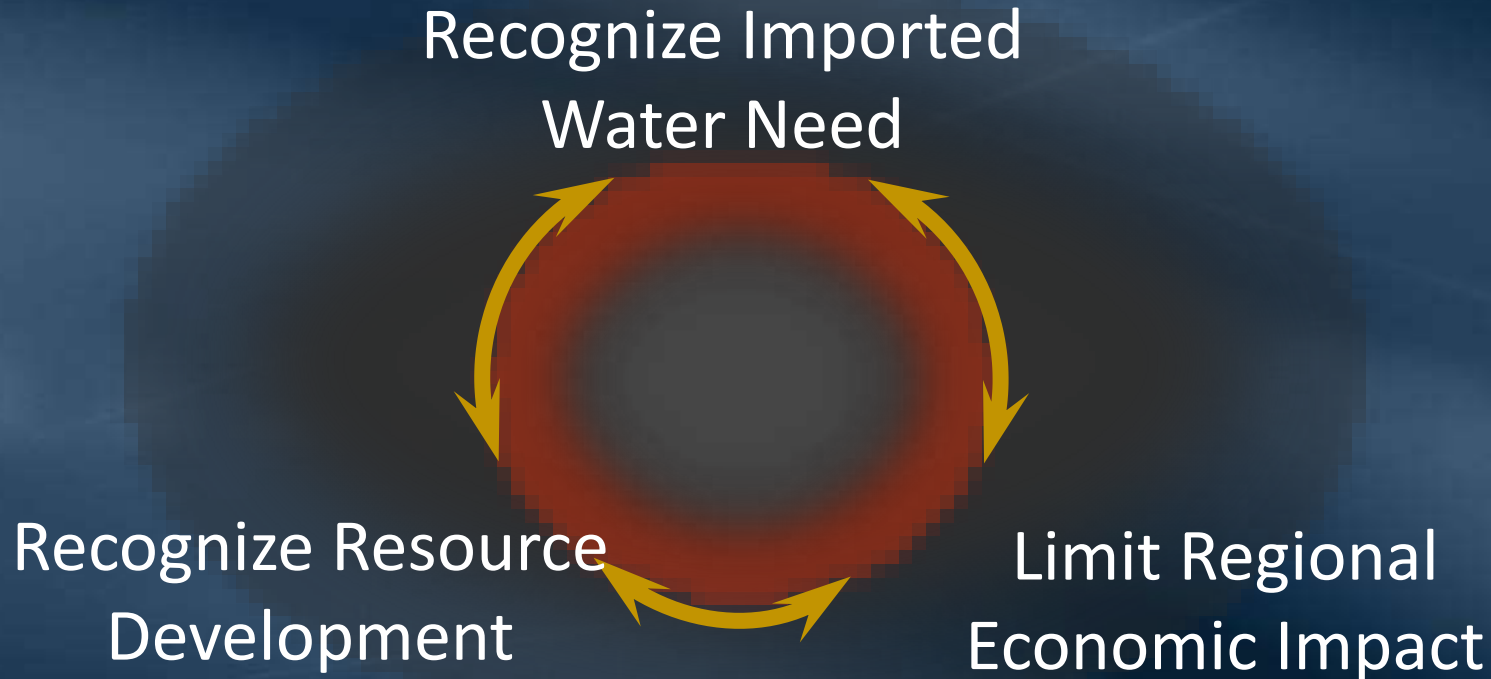
Overview

- Background and Purpose
- History and Development
- Next Steps

Background and Purpose

WSDM Plan Guiding Principle

“Metropolitan will encourage storage of water during periods of surplus and work jointly with its Member Agencies to minimize the impacts of water shortages on the region’s retail consumers and economy during periods of shortage”



Water Supply Allocation Plan (WSAP)

- Adopted in 2008; provides an approach for allocating available supplies to Member Agencies in times of water shortages
- Needs-based approach maintaining equity among Member Agencies and minimizing impacts on region
- Accounts for
 - Relative dependence on MWD
 - Population and economic growth
 - Local supply investments
 - Changes in local supplies
 - Demand hardening from recycled water use and conservation

State Law Allows Conservation Response

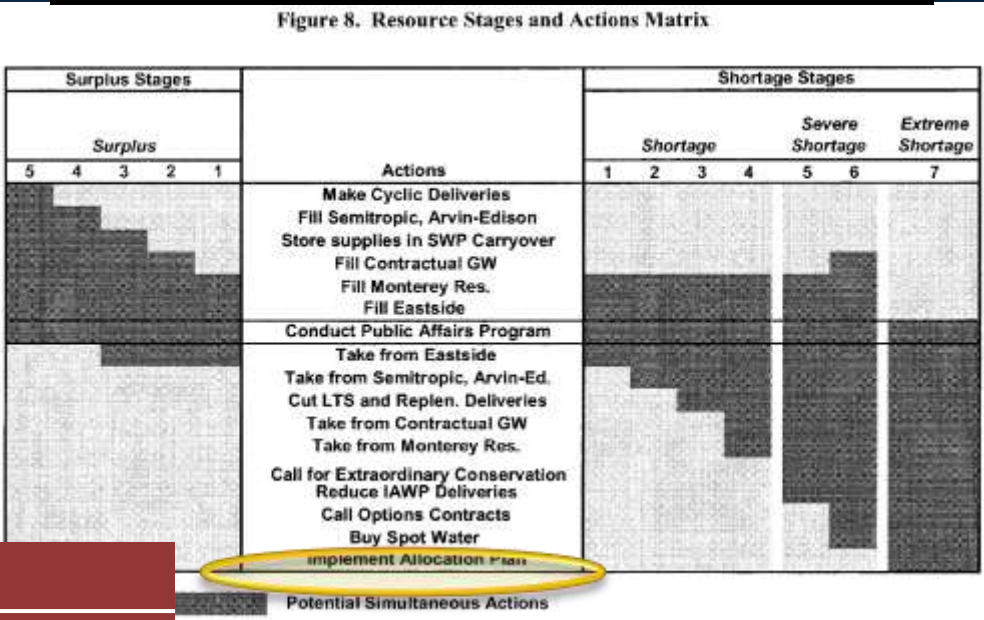
- Water Code § 350 *et seq.* (1953)
 - Grants wide discretion to address water shortage emergencies
 - Allows regulations to conserve supplies for “greatest public benefit”
 - Regulations prevail over other laws during period of emergency
- Water Code § 375 *et seq.* (1977)
 - Authorizes implementation of water conservation programs “notwithstanding any other law”
 - Can encourage water conservation through rate structure design
 - Allows enforcement of use limitations through volumetric penalties

Key Takeaways: WSAP and Preferential Rights

- Staff briefed Water Planning & Stewardship Committee on preferential rights in August 2021
 - Each agency maintains a preferential right to water
 - Preferential rights not preempted by WSAP
 - Agencies subject to rate surcharge, but not delivery shutoff
 - WSAP aligns with conservation provisions in California Water Code

WSAP Implementation is a WSDM Shortage Action

WSDM Resource Stages and Actions Matrix



WSAP Shortage Levels

Table 1: Shortage Allocation Index

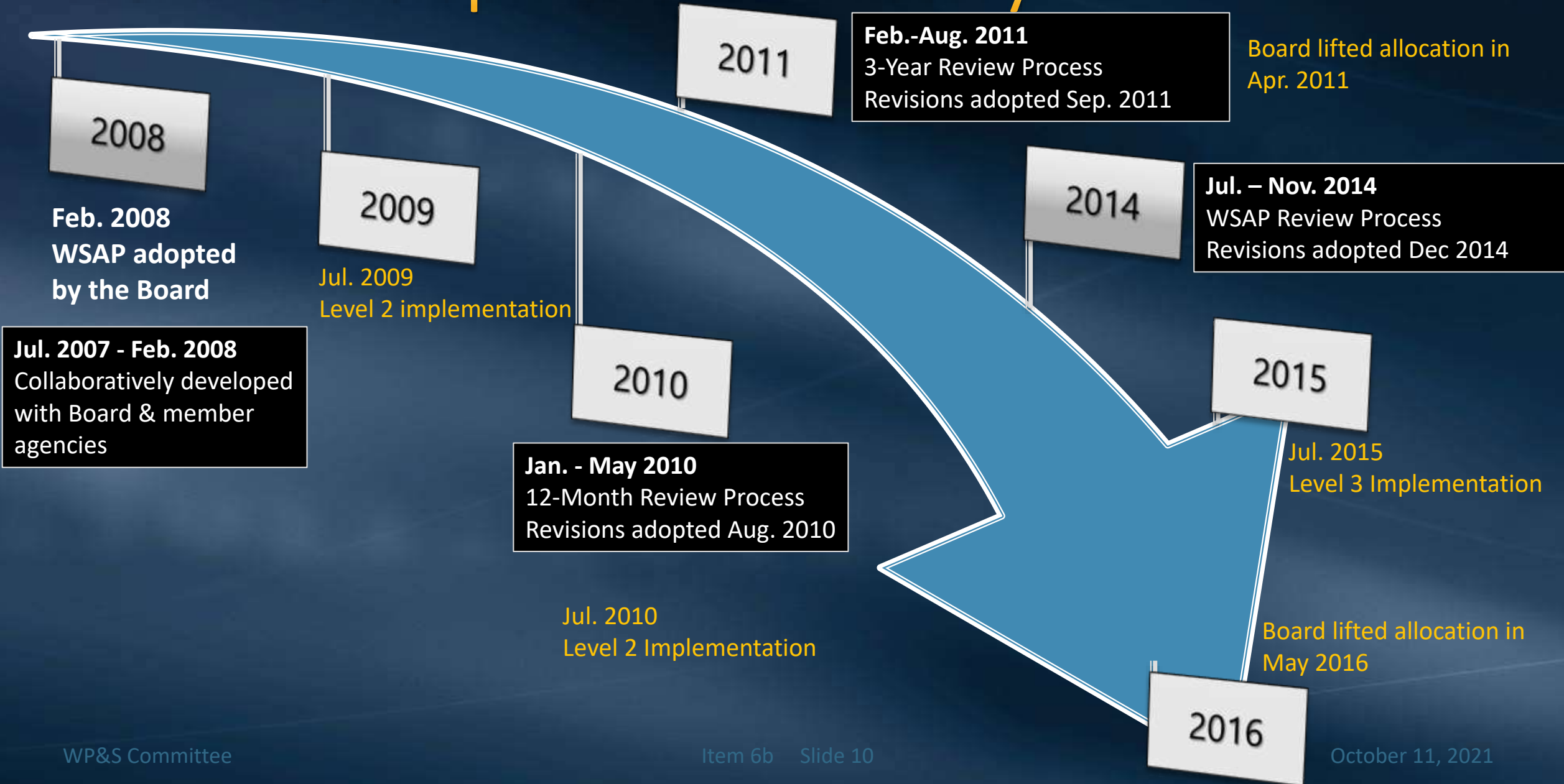
(a) Regional Shortage Level	(b) Wholesale Minimum Percentage	(c) Maximum Retail Impact Adjustment Percentage
1	92.5%	2.5%
2	85.0%	5.0%
3	77.5%	7.5%
4	70.0%	10.0%
5	62.5%	12.5%
6	55.0%	15.0%
7	47.5%	17.5%
8	40.0%	20.0%
9	32.5%	22.5%
10	25.0%	25.0%

Water Supply Conditions Framework

BASELINE Water Use Efficiency	Ongoing conservation, recycling, and outreach to build storage
CONDITION 1 Water Supply Watch	Local agency voluntary dry-year conservation measures and use of regional storage reserves
CONDITION 2 Water Supply Alert	Regional call for conservation through drought ordinances and other measures to mitigate use of storage
CONDITION 3 Water Supply Allocation	Implement Water Supply Allocation Plan: Level: 1 2 3 4 5 6 7 8 9 10

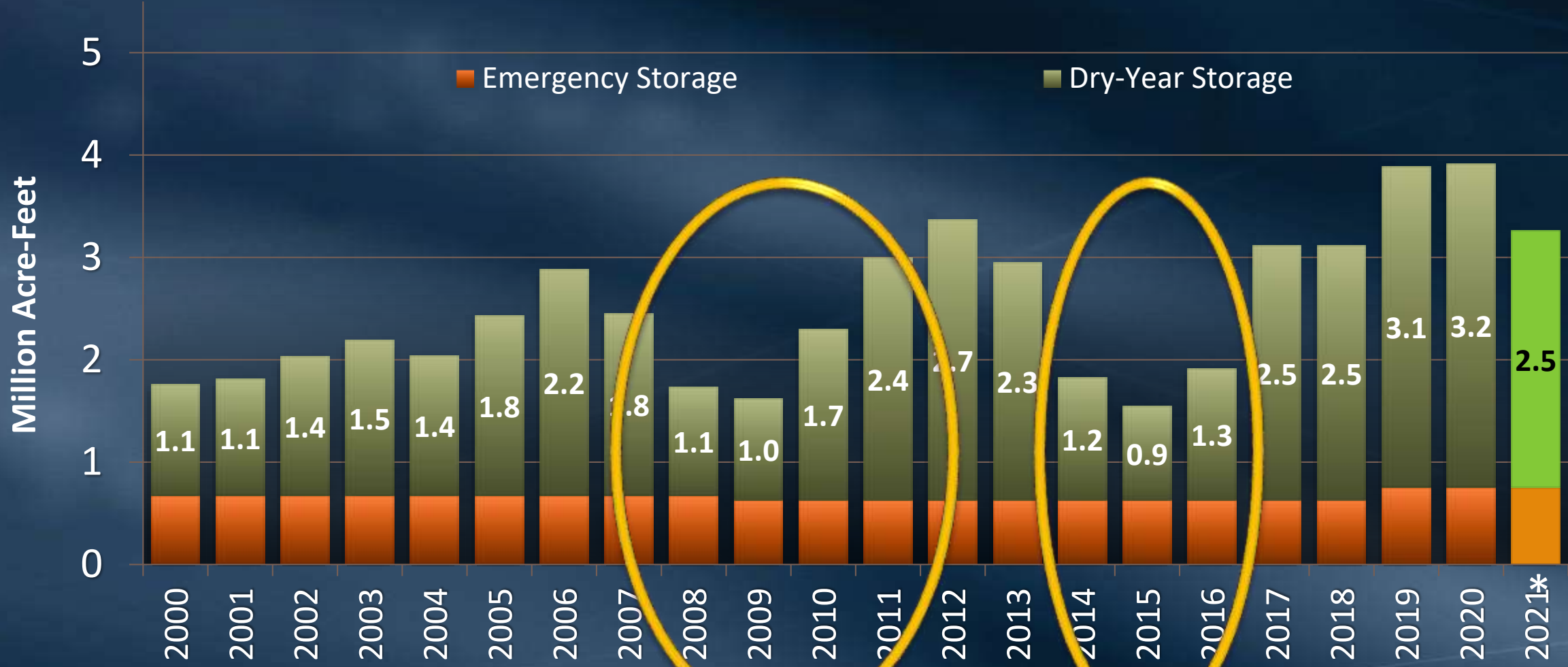
History and Development

WSAP Development and History



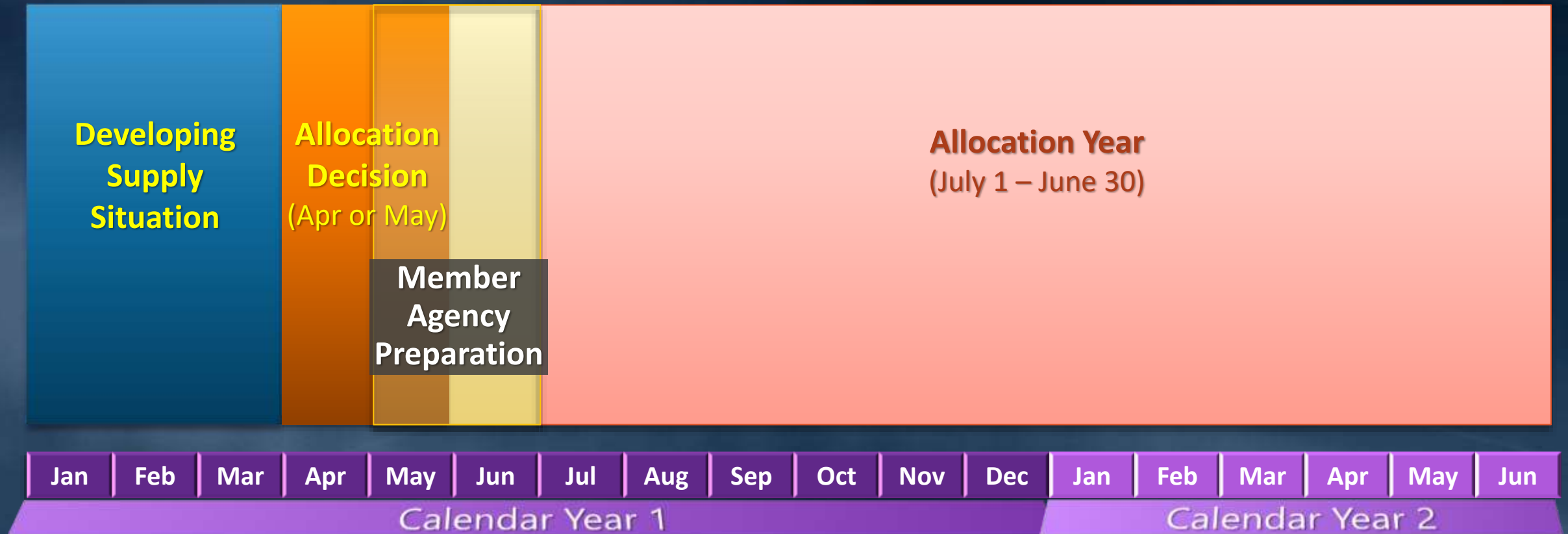
Historical Metropolitan Storage Balances

End of Year Balances



* Estimate – May change based on supply/demand conditions

WSAP Implementation Timeline



WSAP Implementation in 2009/10

- Level 2 Allocation, effective July 1, 2009 to June 30, 2010
- WSAP Baseline Allocation: **2.2 MAF**
- WSAP Level 2 Allocation: **1.9 MAF**
- Actual Member Agency purchases **1.8 MAF**
 - 400 TAF under Baseline, an 18% reduction in use
 - 100 TAF of additional reduction from Level 2 Allocation
- No member agency exceeded its allocation – no penalties or surcharges were applied

Next Steps

Potential Policy Questions and Next Steps

- Does the current WSAP approach meet the needs of the member agencies during times of shortage?
- Does the current WSAP approach need to be revised and/or updated?
- Potential topics for updating the current WSAP:
 - Base Period and Adjustments
 - Conservation Savings Estimate
 - Minimum Per Capita Water Use Credit
 - Allocation Surcharge

