



One Water and Stewardship Committee

Update on WSDM

Item 6d
February 13, 2024

Item 6d Update on WSDM

Subject

Update on Oral Report on Water Surplus and Drought Management

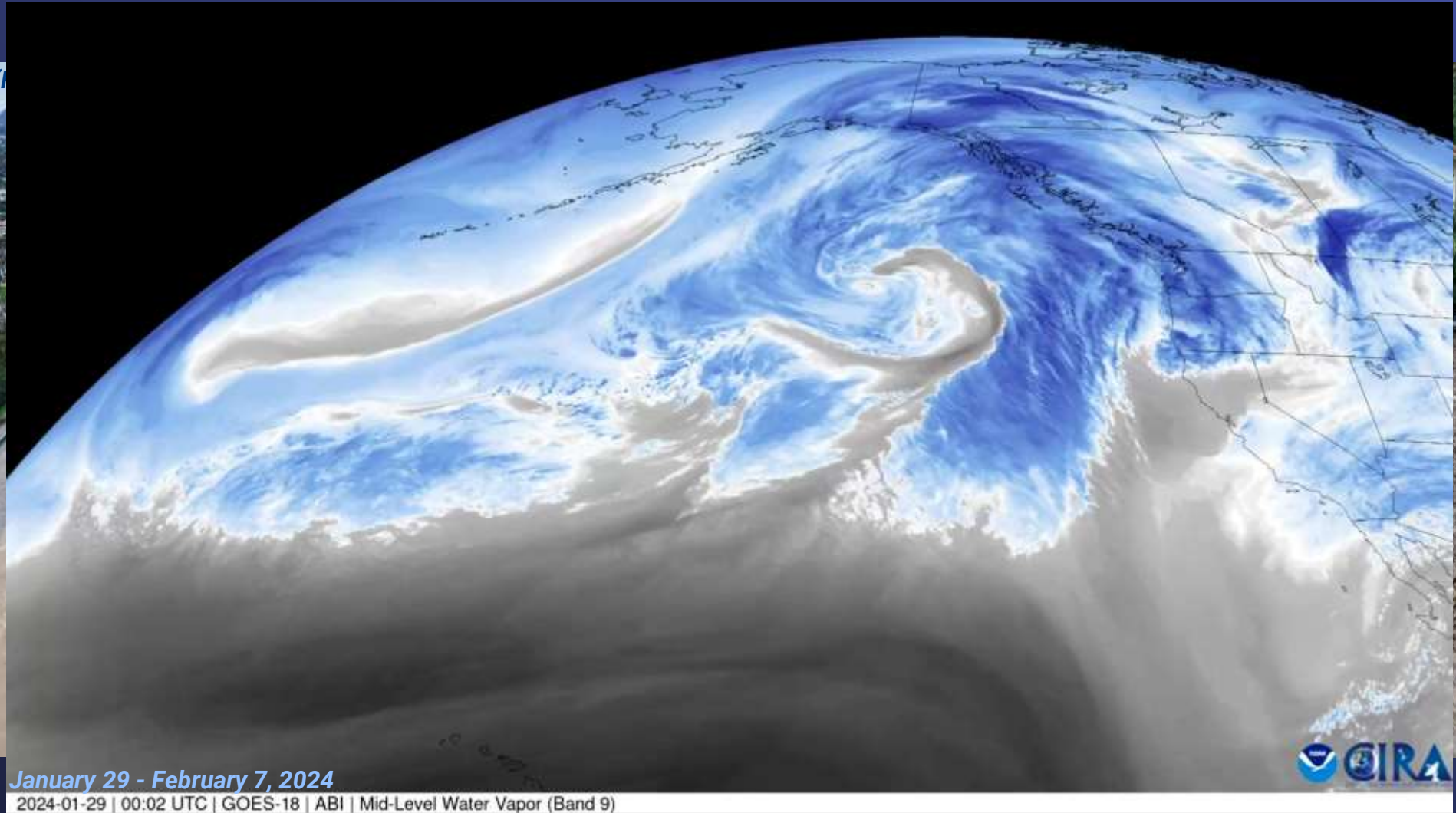
Purpose

Provide updated supply and hydrologic information



Hydrologic Conditions Update

Series of Winter Storms Pummel the West

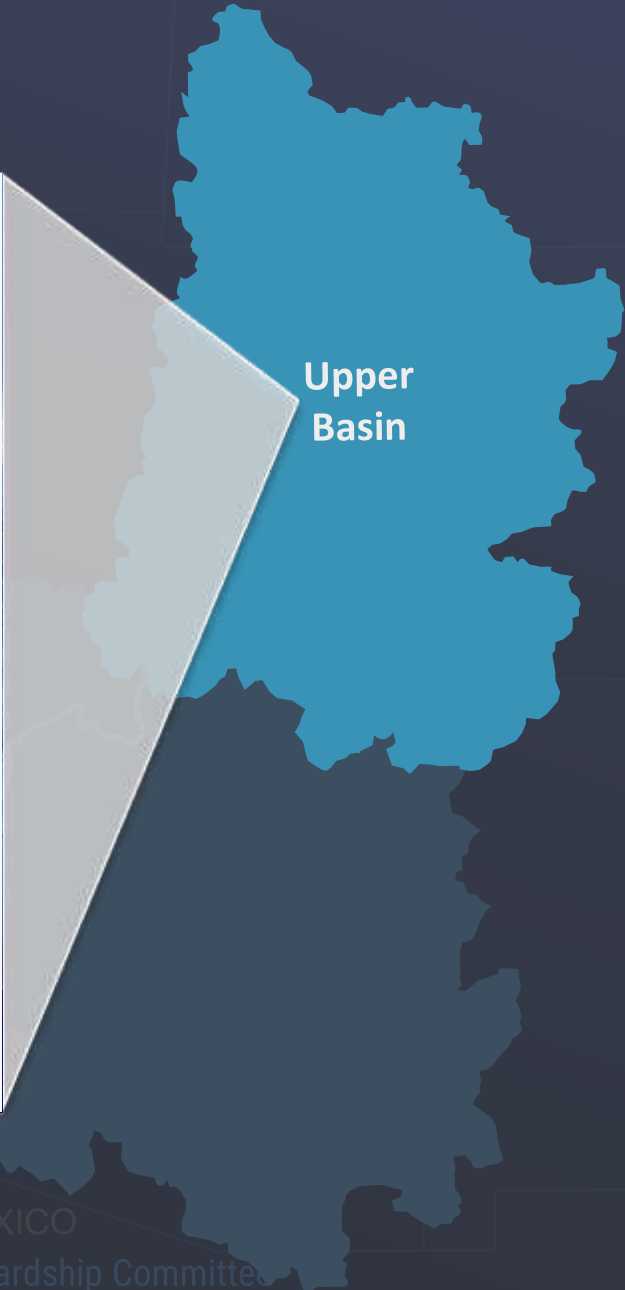
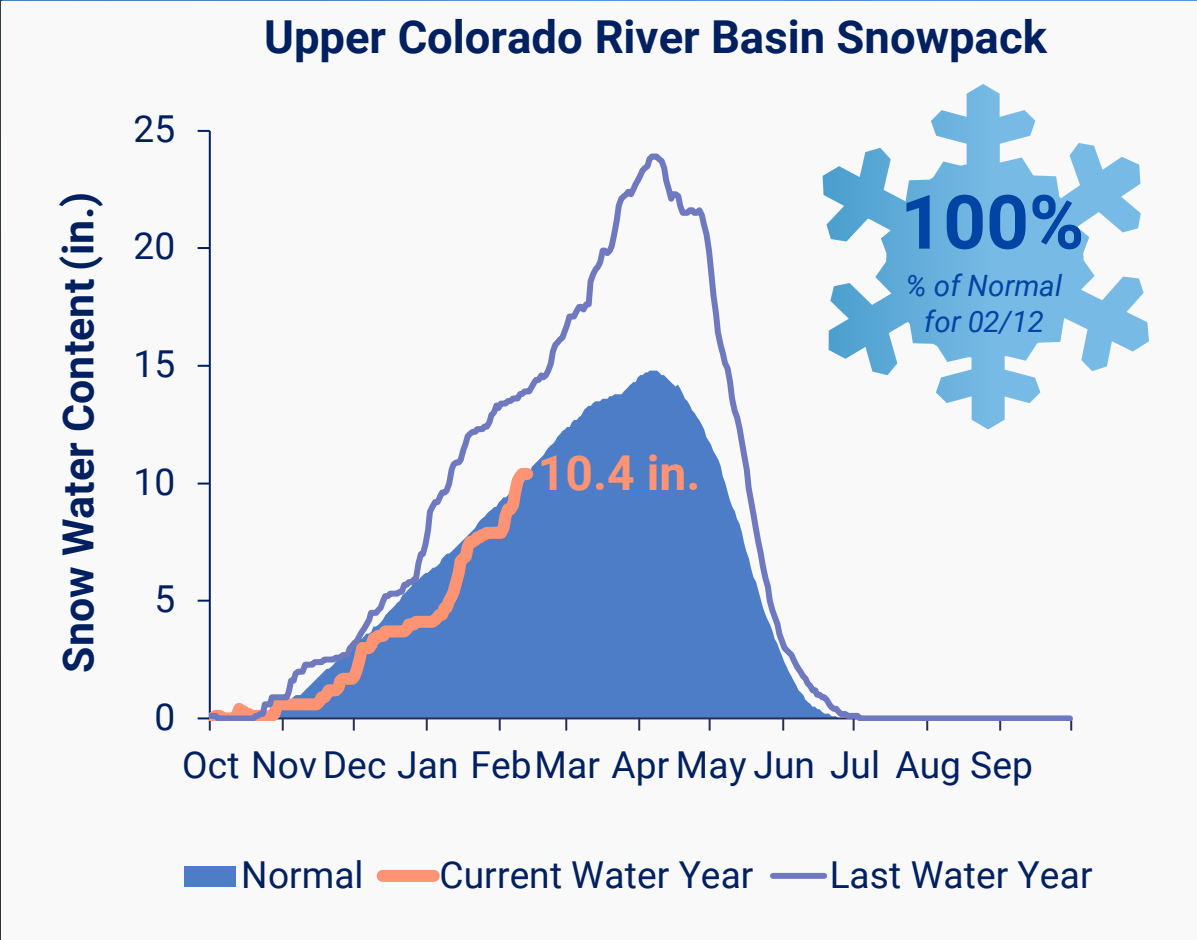


Imported Supply Watershed Conditions Continuing to Develop

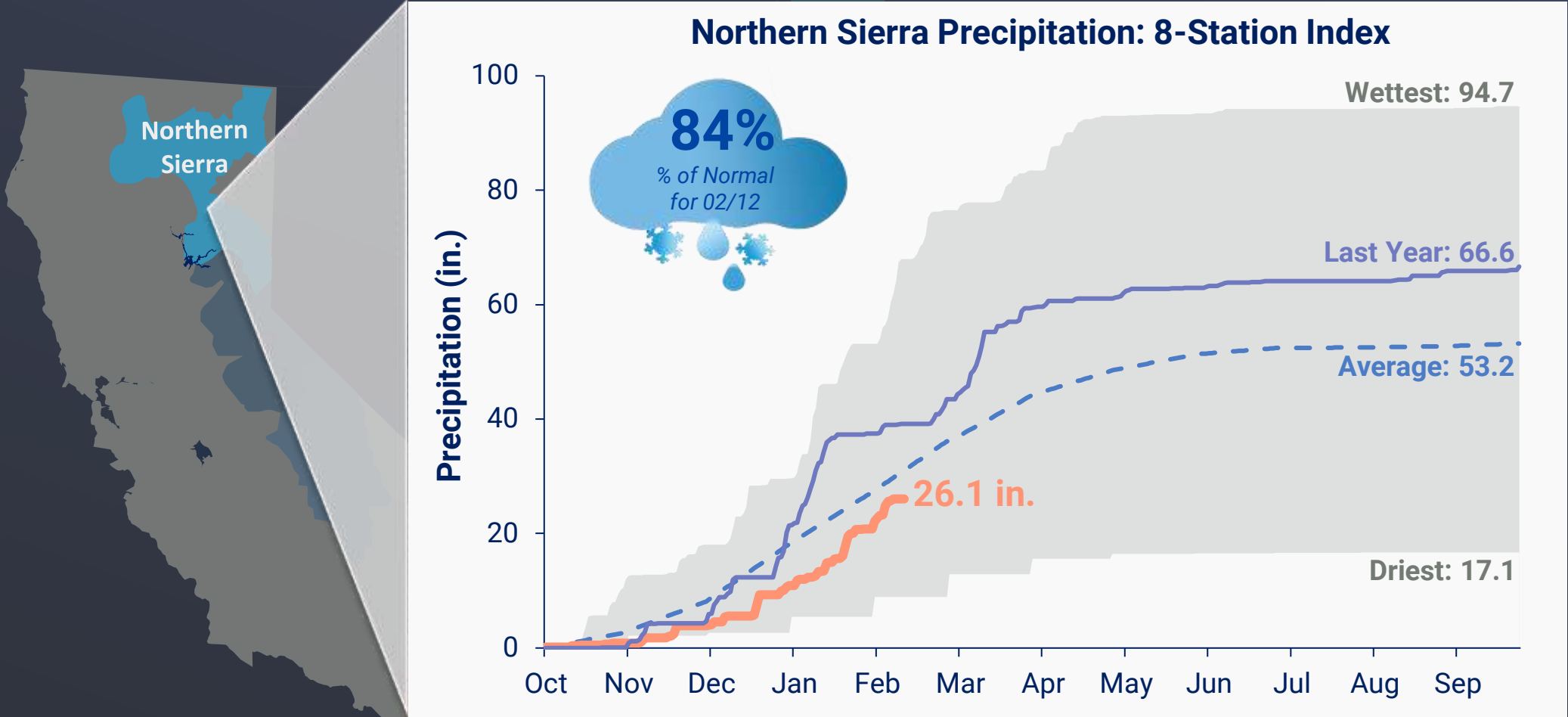


Note: Images not drawn to scale.

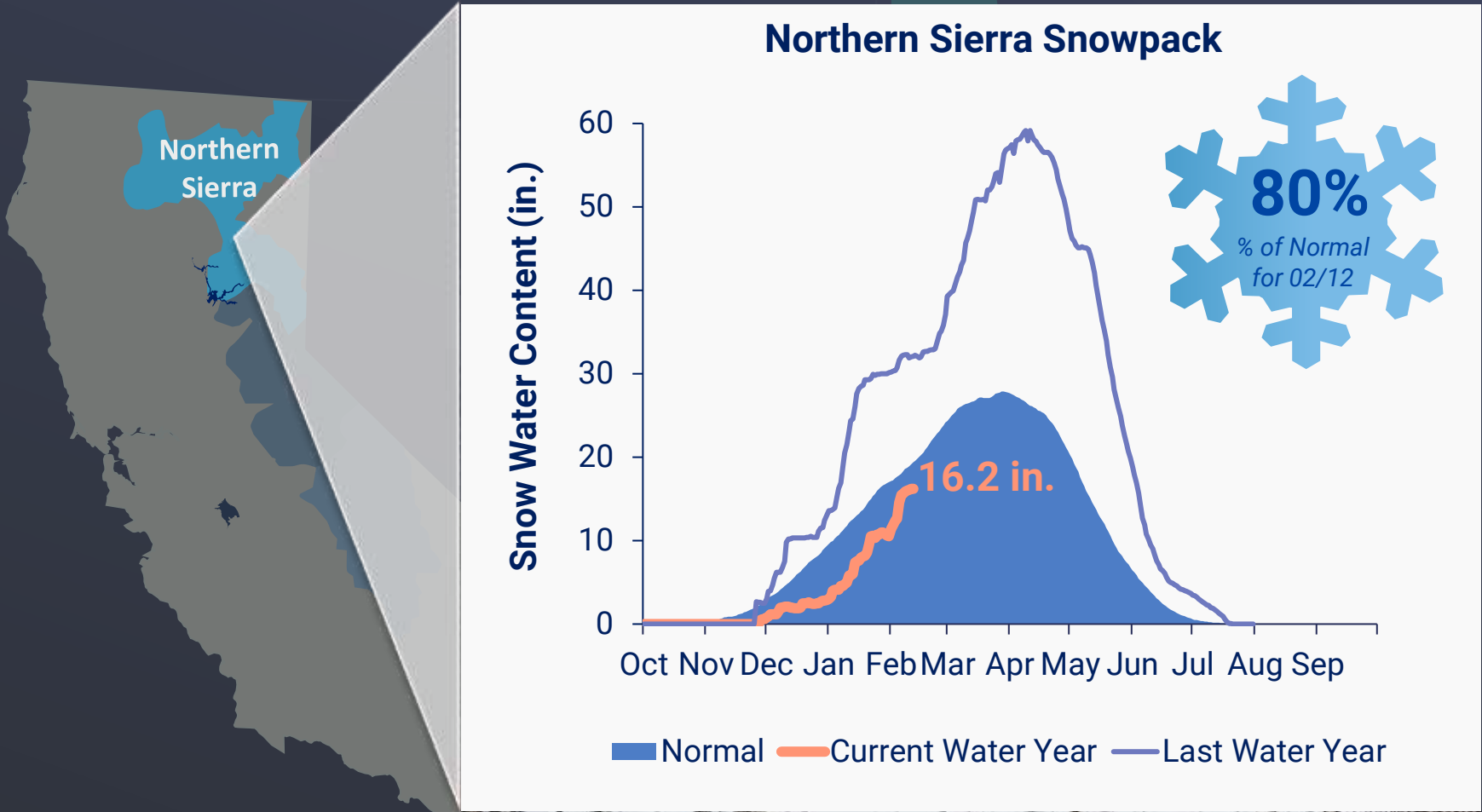
Imported Supply Watershed Conditions Continuing to Develop



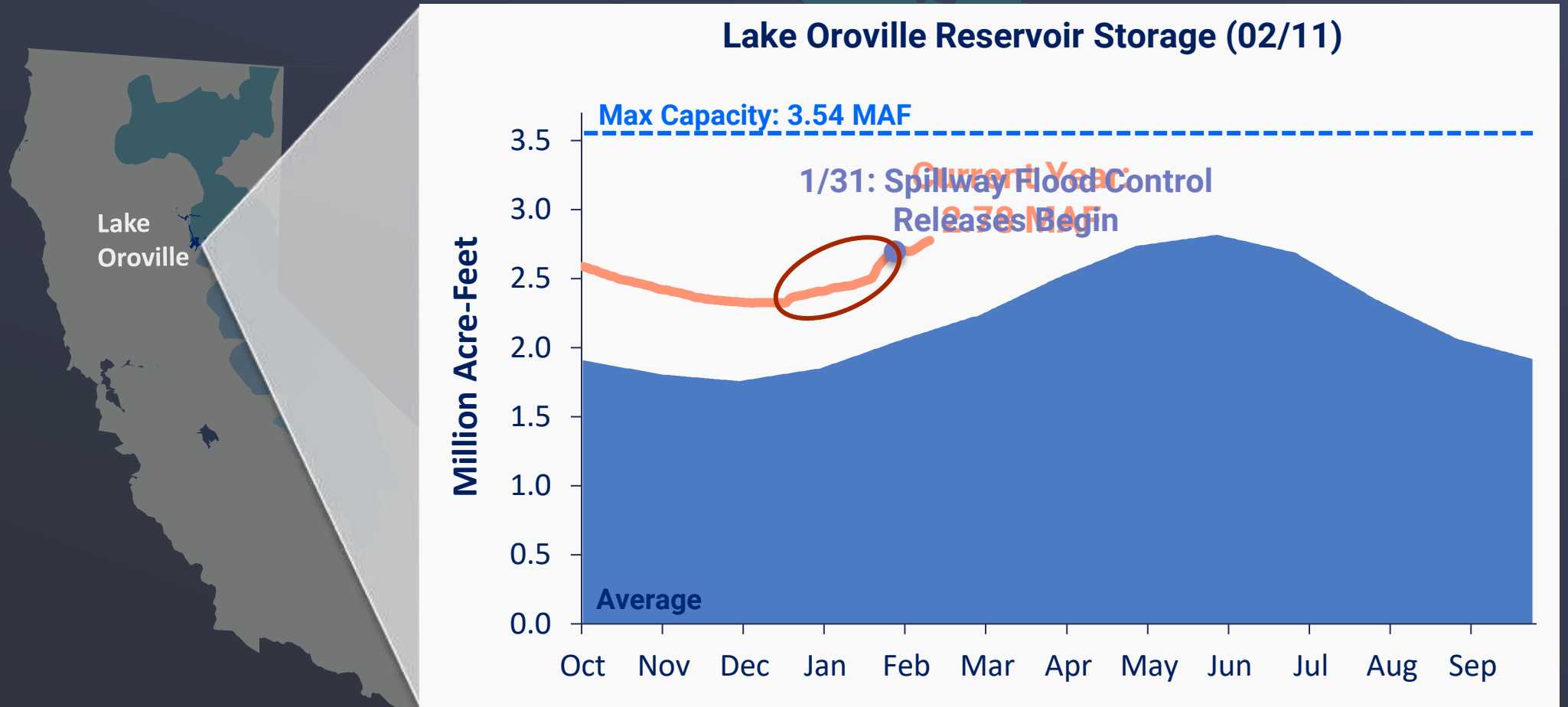
Imported Supply Watershed Conditions Continuing to Develop



Imported Supply Watershed Conditions Continuing to Develop



Flood Control Releases Made at Oroville Spillway



Flood Control Releases Made at Oroville Spillway

January 31, 2024



Credit: DWR

January 31, 2024



Credit: DWR

“First Flush” in the Delta



“First Flush” in the Delta

Sacramento River

TURBIDITY



San Joaquin River

Old and Middle
River Reverse Flow
(OMR)

-2,000 cfs avg. for 14 days

Old River

Middle River

Early Winter Pulse
Protection
“First Flush”

01/23-02/05

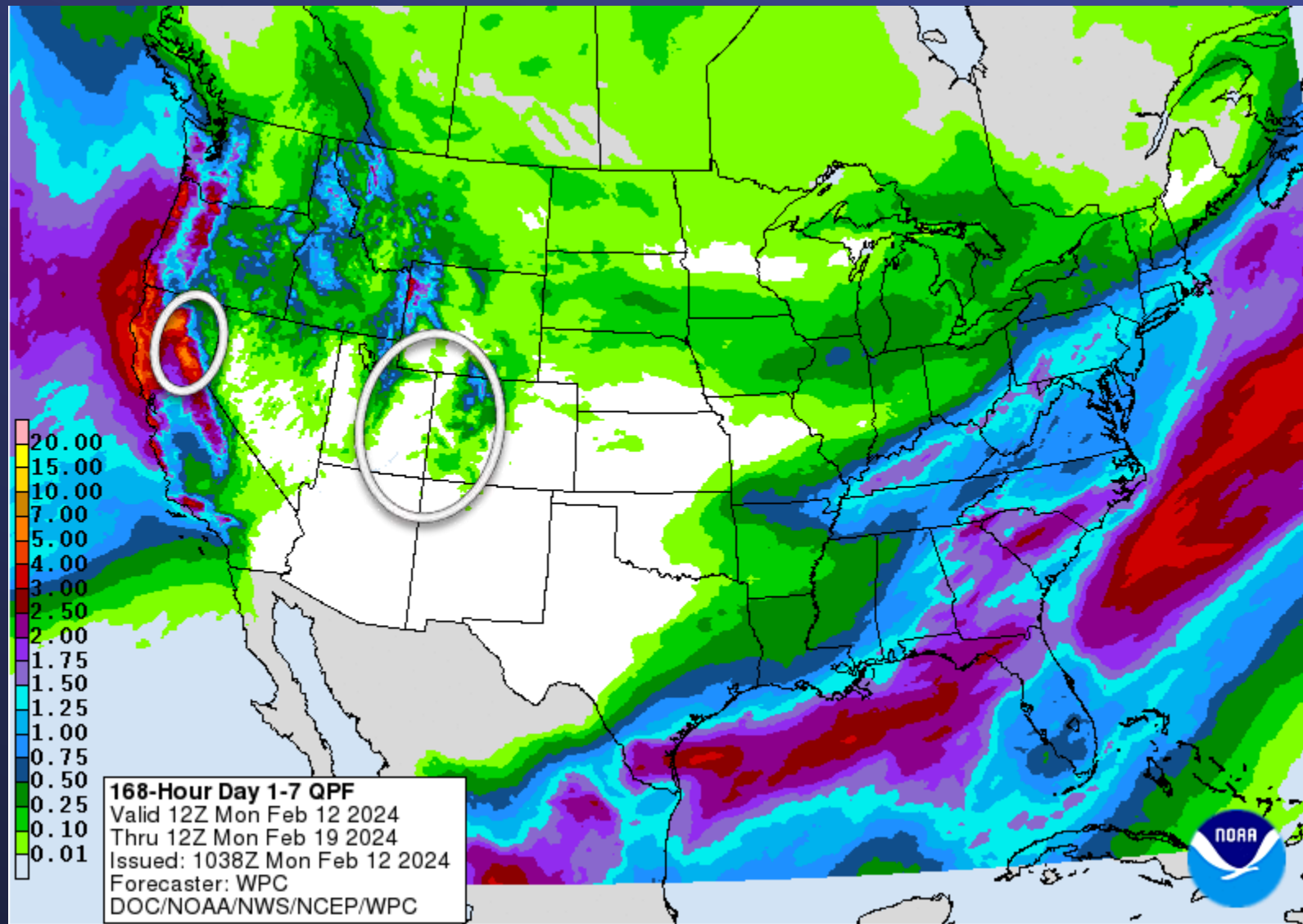
Reduced
Pumping to
Protect Fish

Banks
(SWP)

Jones
(CVP)

Additional Precipitation in the Forecast

February 12 – February 19



2024 Water Surplus & Drought Management

2024 Water Supply/Demand Balance: **Regional View**

