



Finance, Audit, Insurance, and Real Property Committee

Authorize the General Manager to credit up to
\$200,000 to Western Municipal Water District for
Treatment Surcharge Costs Incurred Due to the
Unexpected Extension of a Metropolitan Shutdown

Item 7-13

April 11, 2023

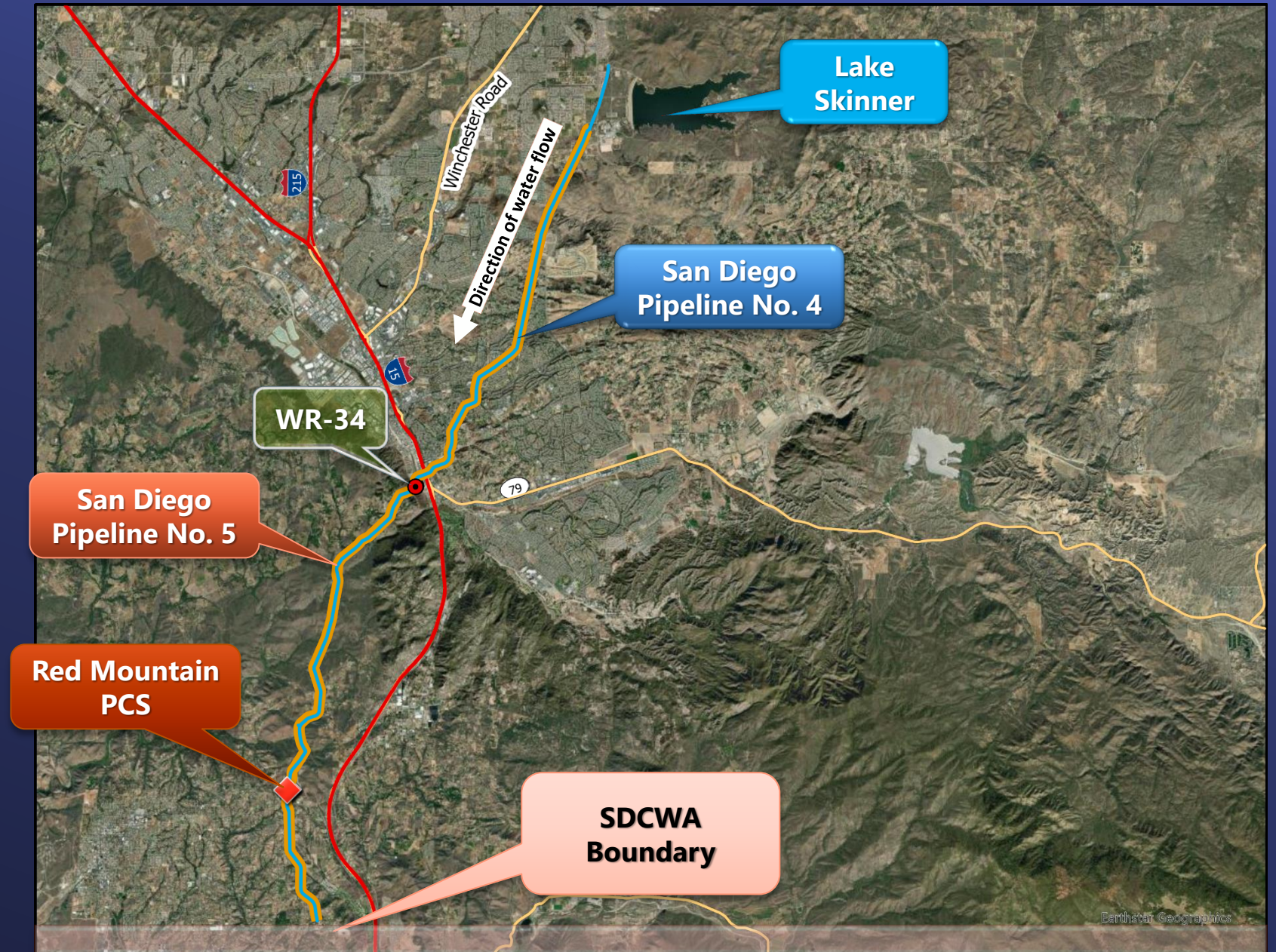
Service Connection WR-34

Background

- San Diego County Water Authority requested shutdown of San Diego Pipeline (SD PL) No. 5
- Metropolitan shutdown Service Connection WR-34 (WR-34) to inspect the Red Mountain Pressure Control Structure
- Two sleeve valves required complete refurbishment



Background



Red Mountain Pressure Control Structure





Service Connection WR-34

Sleeve Valve Refurbishment

- Initially planned as one-month shutdown
- Refurbishment of two sleeve valves has taken much longer than originally anticipated
- One sleeve valve and a temporary bulkhead have been installed
- WR-34 returned to service on March 10, 2023



Admin Code 4503

Western Cooperation with Admin Code 4503

- Western Municipal Water District (Western) purchases untreated water via SD PL No. 5 at WR-34 to deliver to its retail agency Rancho California Water District (Rancho California)
- Rancho California uses delivery to meet its legal requirement to discharge flows to Murrieta Creek
 - Replenishes Murrieta Temecula Groundwater Basin
 - Potable water source for Camp Pendleton
- Agencies cooperated with Metropolitan's Admin Code Section 4503 and minimized the amount of treated water deliveries during the shutdown

Incurring Costs

Credit for Treatment Surcharge Costs

- WR-34 was shutdown four months longer than planned
- Western has had to purchase treated water from SD PL No. 4 to deliver to Rancho California during the prolonged shutdown to meet Rancho California's legal obligation
- Western has incurred the costs of Metropolitan's Treatment Surcharge

Board Options

Options

Option #1: Authorize the General Manager to credit up to \$200,000 to Western Municipal Water District for treatment surcharge costs incurred due to prolonged Metropolitan shutdown

Option #2: Do not authorize the General Manager to credit up to \$200,000 to Western Municipal Water District for costs incurred due to a prolonged Metropolitan shutdown

Board Options

Staff Recommendation

Option #1

