



Real Property and Asset Management Committee

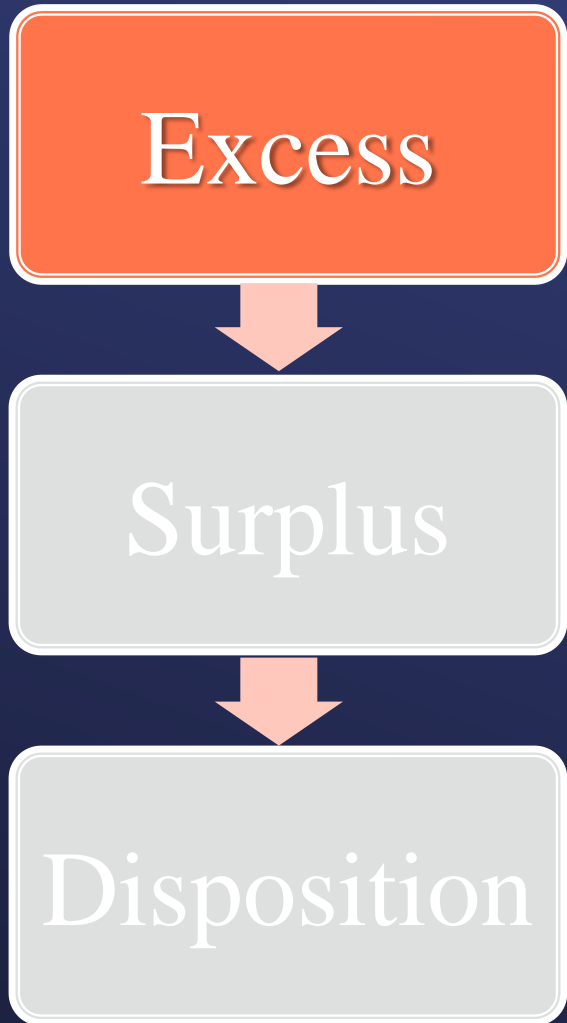
Declare 41 Parcels Surplus

Item 7-7

October 11, 2022

Property Summary by County

County	Fee	Easements	Total
Imperial	3,814	709	4,523
Los Angeles	1,436	672	2,108
Orange	279	2,262	2,541
Riverside	115,427	21,038	136,465
San Bernardino	34,186	8,402	42,588
San Diego	120	178	298
Contra Costa	8,504	—	8,504
San Joaquin	11,657	—	11,657
Other (Clark, Mohave, Ventura)	146	2,806	2,952
Total (Acres)	175,569	36,067	211,636



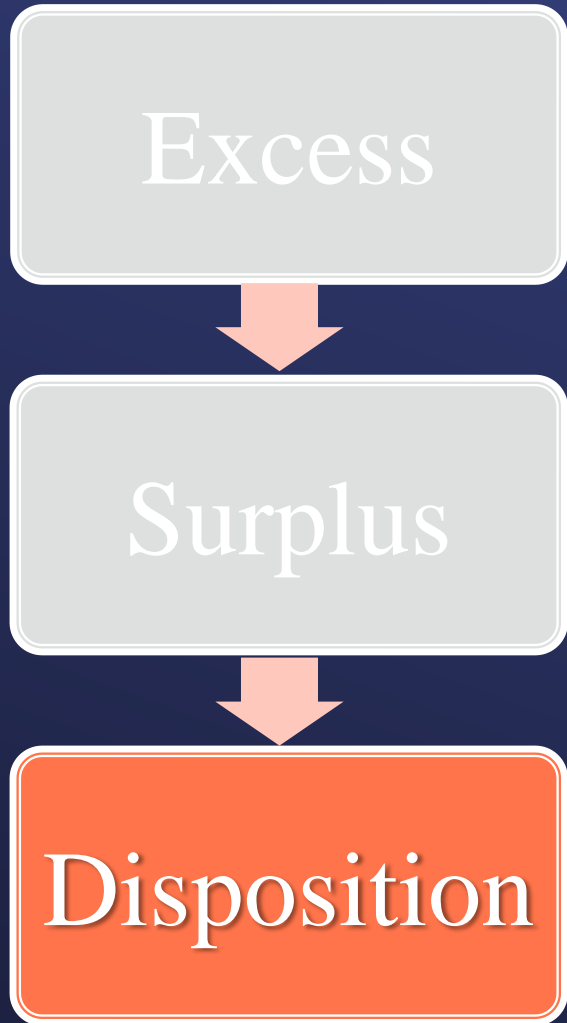
Consideration Criteria

- Existing operational facilities
- Land for access and buffer purposes
- Ecosystem/environmental reserve land
- Land for water conservation purposes
- Land for dewatering/emergency discharge
- Future projects, reserve or mitigation land



Surplus Property

The term used for real property that is deemed no longer needed by Metropolitan's Board of Directors.



Disposition Process

- Coordinate with Housing and Community Development agency (HCD)
- 60-Day Notice of Availability issued
 - Local public agencies
 - HCD-approved low-income housing developers
- 90-Day negotiation period
- Finalize disposition

Surplus

- Current Board Action
- Declare 41 parcels, totaling approximately 636 acres, as surplus

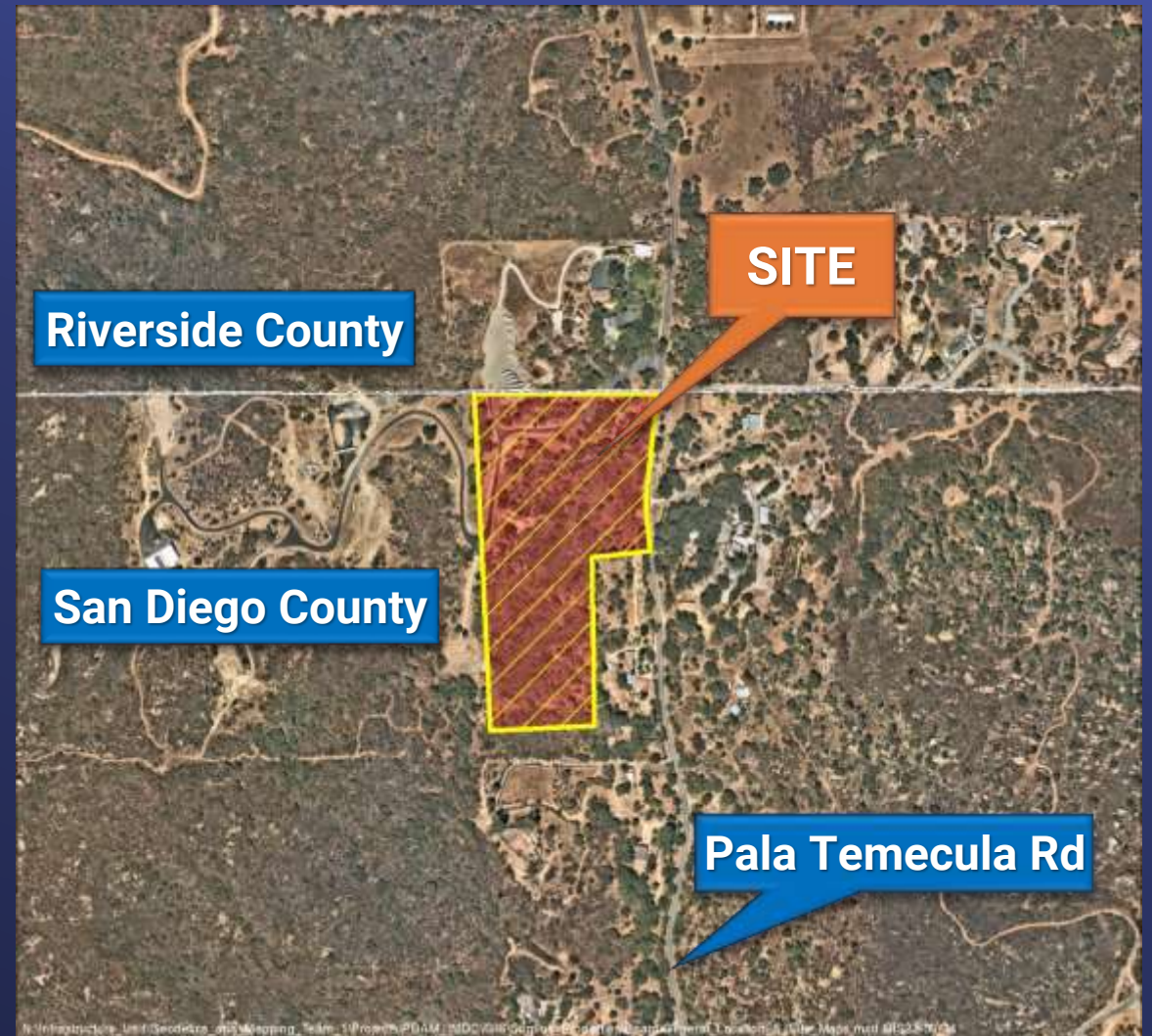
Service Area & CRA Map



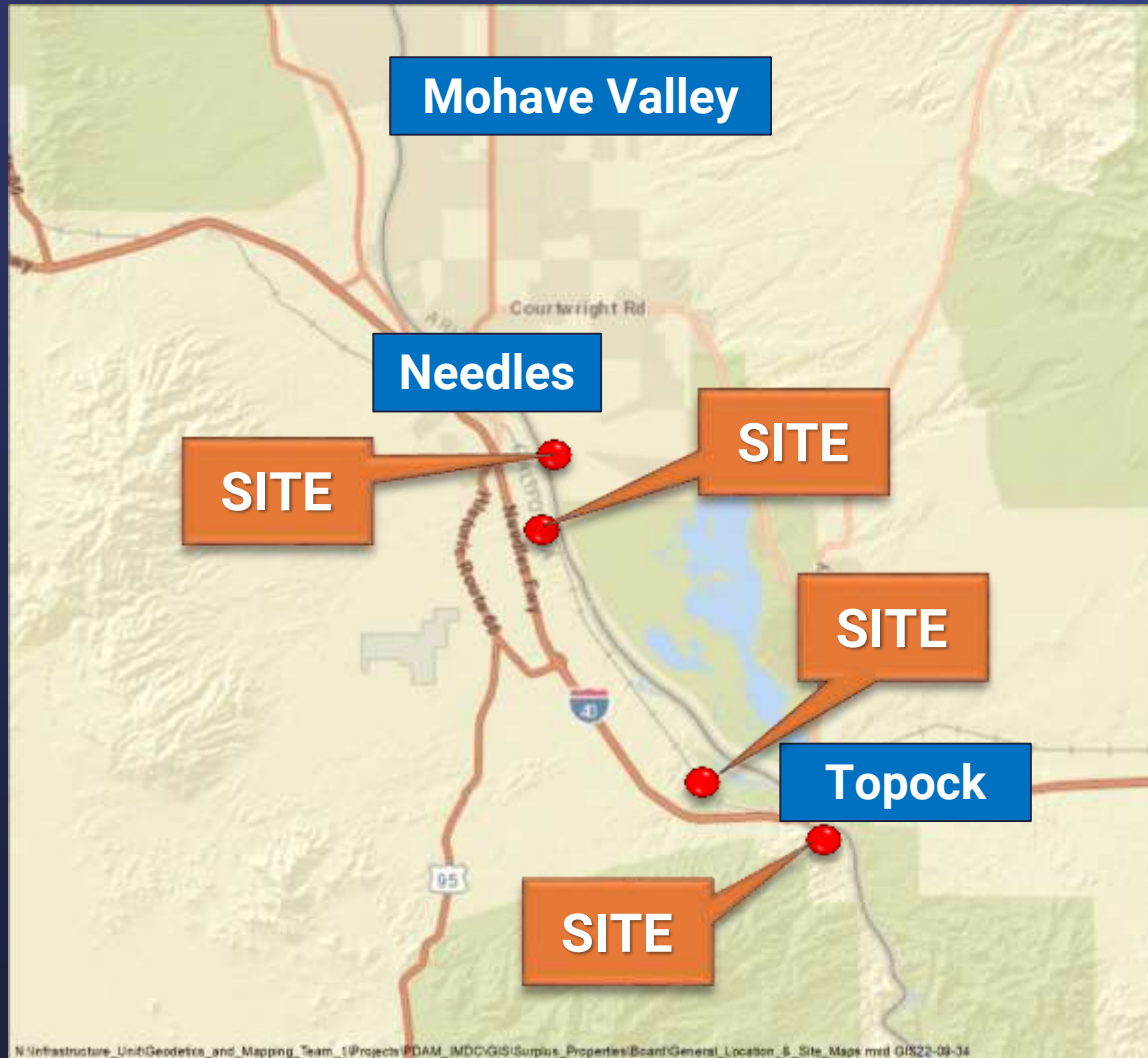
General Location



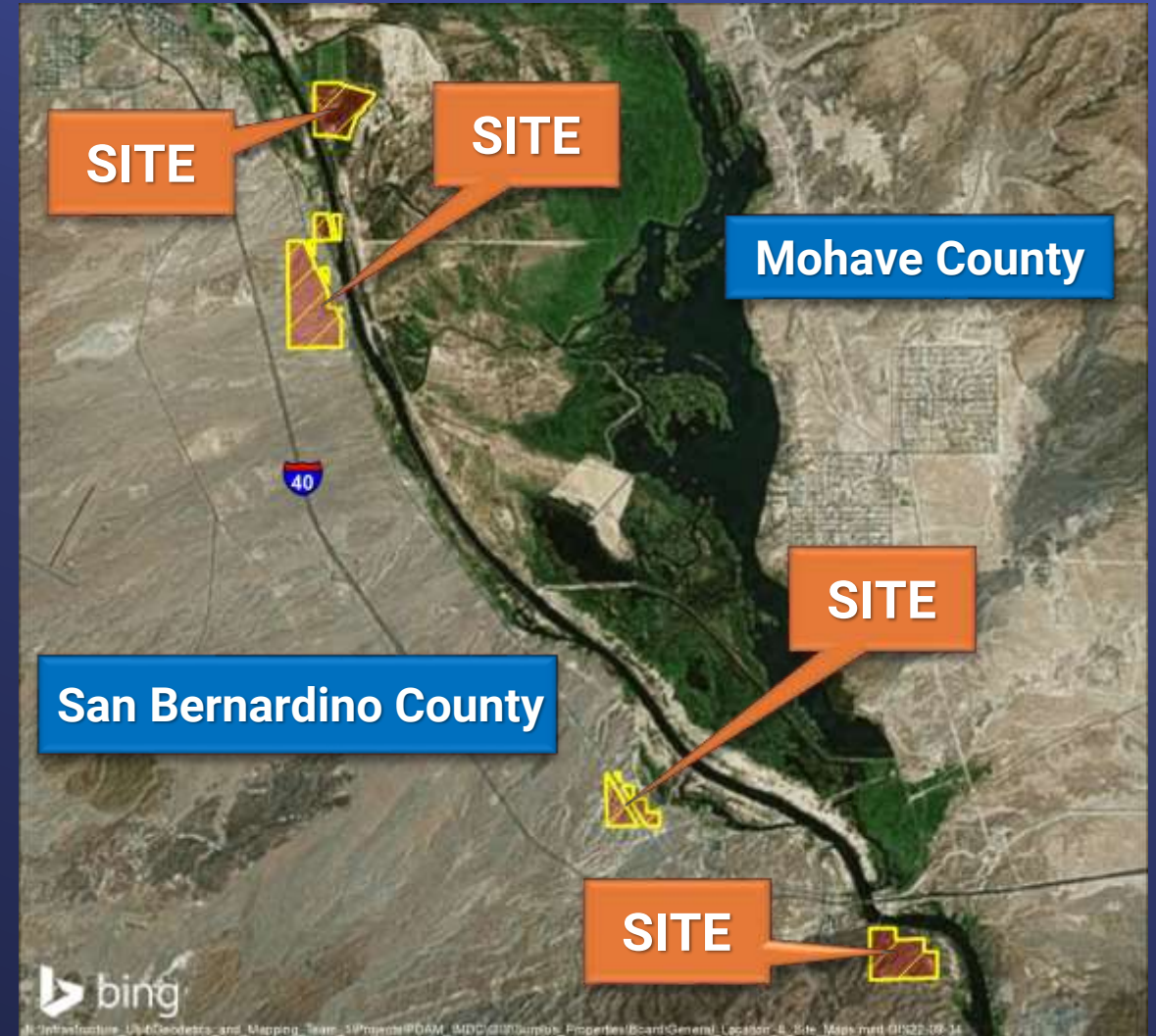
Site Map 1



General Location



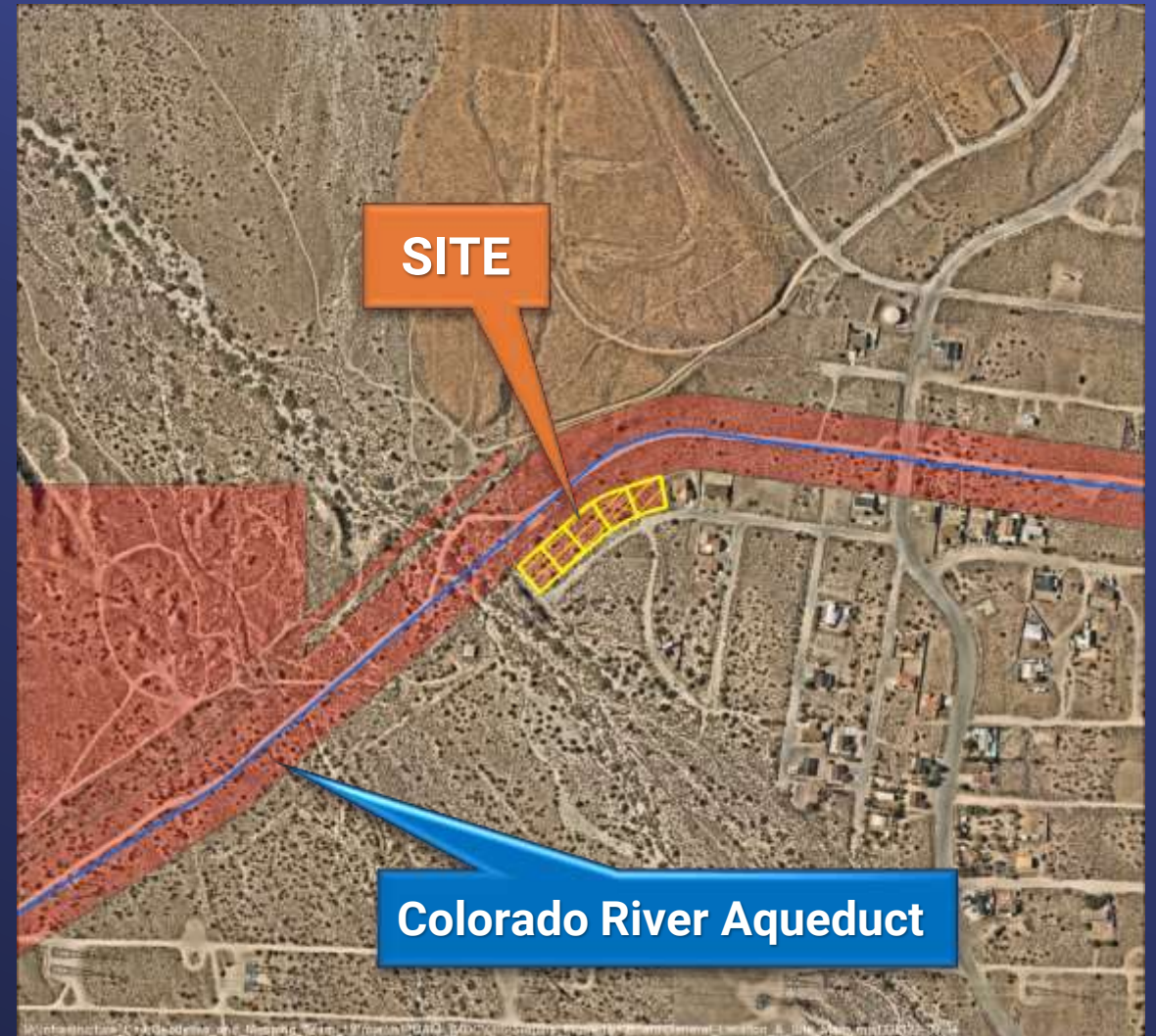
Site Map 2



General Location



Site Map 3



General Location Map - Site 4



Site Map 4



Board Options

Option No. 1

- Declare that the 41 parcels are surplus land and not necessary for Metropolitan's use based on the written grounds set forth in the staff board letter and authorize their disposal according to Metropolitan's surplus land disposal policies and procedures.

Option No. 2

- Do not declare the 41 parcels surplus to Metropolitan needs

Board Options

Staff Recommendation

- Option No. 1

