



Imported Water Committee

Revision and Restatement of Bay-Delta Policies

Item 7-6
September 12, 2022

Policy Principles Review





Agenda

- Recap and Overview
- Revised Bay-Delta Policy Framework
- Board Action

Recap and Overview

BDI Policy Update Timeline

September Action

	Oct	Nov	Dec	Jan	Feb	Mar	Apr	May	Jun	Jul	Aug	Sep
Staff Research and Development												
Kick Off with BDI Committee												
Policy Review with WP&S Committee												
Board Info and Action Items							REPORT				INFO	ACTION

Why Update the Bay-Delta Policies?

Existing Bay-Delta Policies

- 4 Policy themes (2006)
- 13 Policy Principles
- Short-, Mid-, Long- Term Framework (2007)
- 6 Conveyance Criteria (2007)
- Delta Action Plan (2007)
- Delta Governance Principles (2008)
- Delta Vision Implementation (2009)

Draft Bay-Delta Policies Framework

- 6 Policy Areas
 - 18 Policy Principles



Revised Bay-Delta Policies Framework

- 3 Policy Objectives
- 3 Policy Areas
 - 9 Policy Principles

Revised Framework

Bay-Delta Policy Objectives

- Promote a Sustainable Bay-Delta within Metropolitan's One Water Approach
- Support Statewide and Regional Actions that Improve Bay-Delta Sustainability
- Address the Risks Associated with Climate Change

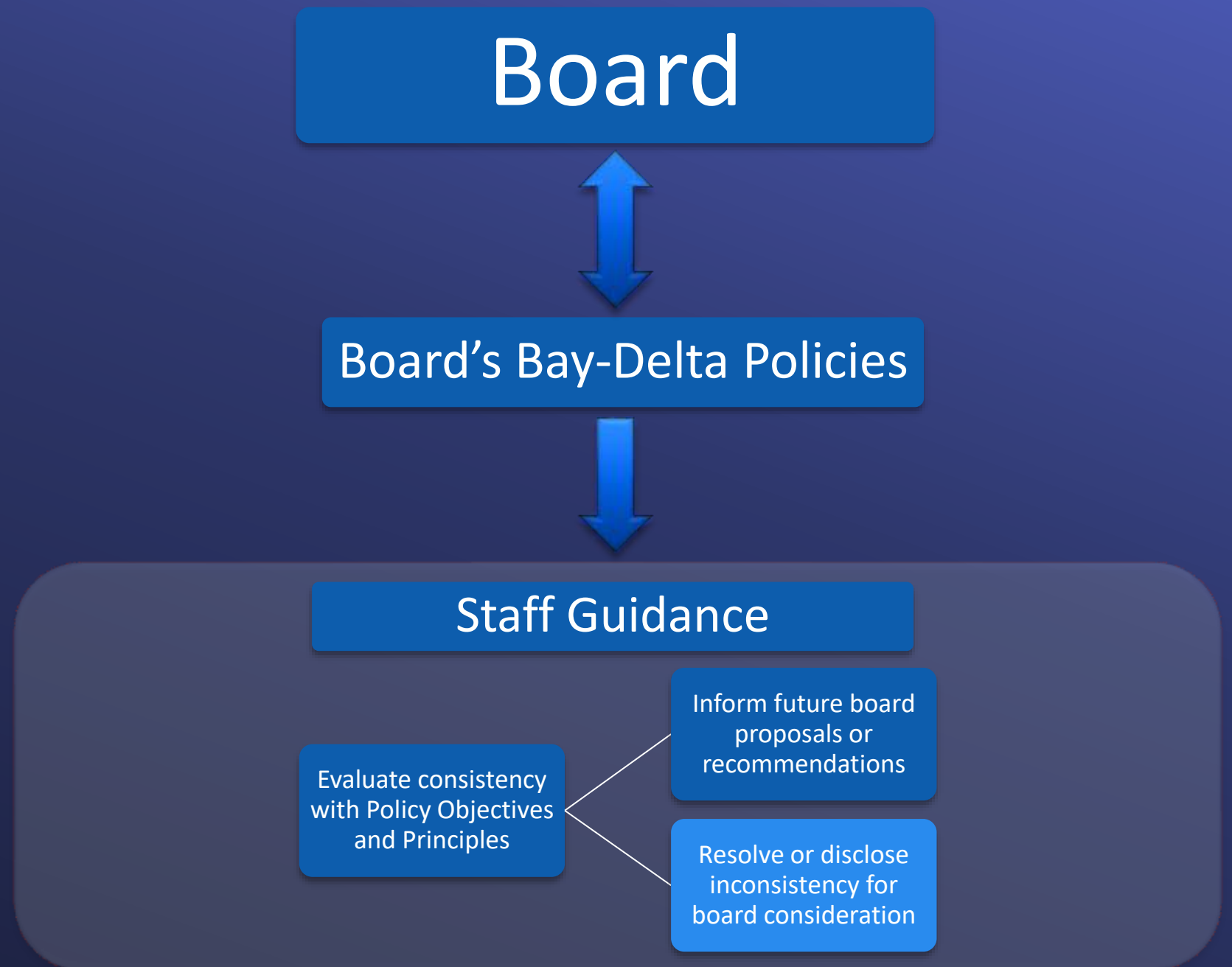
Bay-Delta Policy Framework

Science and Watershed Management	Water Supply Reliability and Resilience	Partnerships and Cost-Effective Investments
Protect and restore aquatic species and habitats based on best available science	Protect water supply reliability and water quality	Maintain and pursue cost-effective financial investments
Partner in watershed-wide approaches to develop comprehensive solutions	Invest in actions that provide seismic and climate resiliency	Foster broad and inclusive engagement of Delta interests and beneficiaries
Advance responsible stewardship of Metropolitan's Delta islands	Seek flexible operations, water management actions, and infrastructure solutions	Promote innovative and multi-benefit initiatives

Use of Bay-Delta Policies

- Provide board guidance to staff related to Bay-Delta activities:
 - Program and project management
 - External engagement
 - Longer term planning
 - Key Investments
 - Day-to-day activities
- Inform future proposed board actions
- Final board deliberation and actions would still be addressed individually

Use of Bay-Delta Policies



Board Action

Options

Option #1

Adopt the revision and restatement of Bay-Delta Policies.

Option #2

Do not adopt the revision and restatement of Bay-Delta Policies.

Staff
Recommendation

Option #1

