



One Water Committee

Initial Results from Household Water Use Study

Item 6c

August 15, 2022

Household Water Use Study



Background

- Devices included in residential leak detection rebate program (Flume is one accepted manufacturer)
- Self - installed on water meter to capture indoor and outdoor use
- Real-time water use and detection
- 6,010 total devices (1,887 in SWP dependent area)

Household Water Use Study

Study Methodology

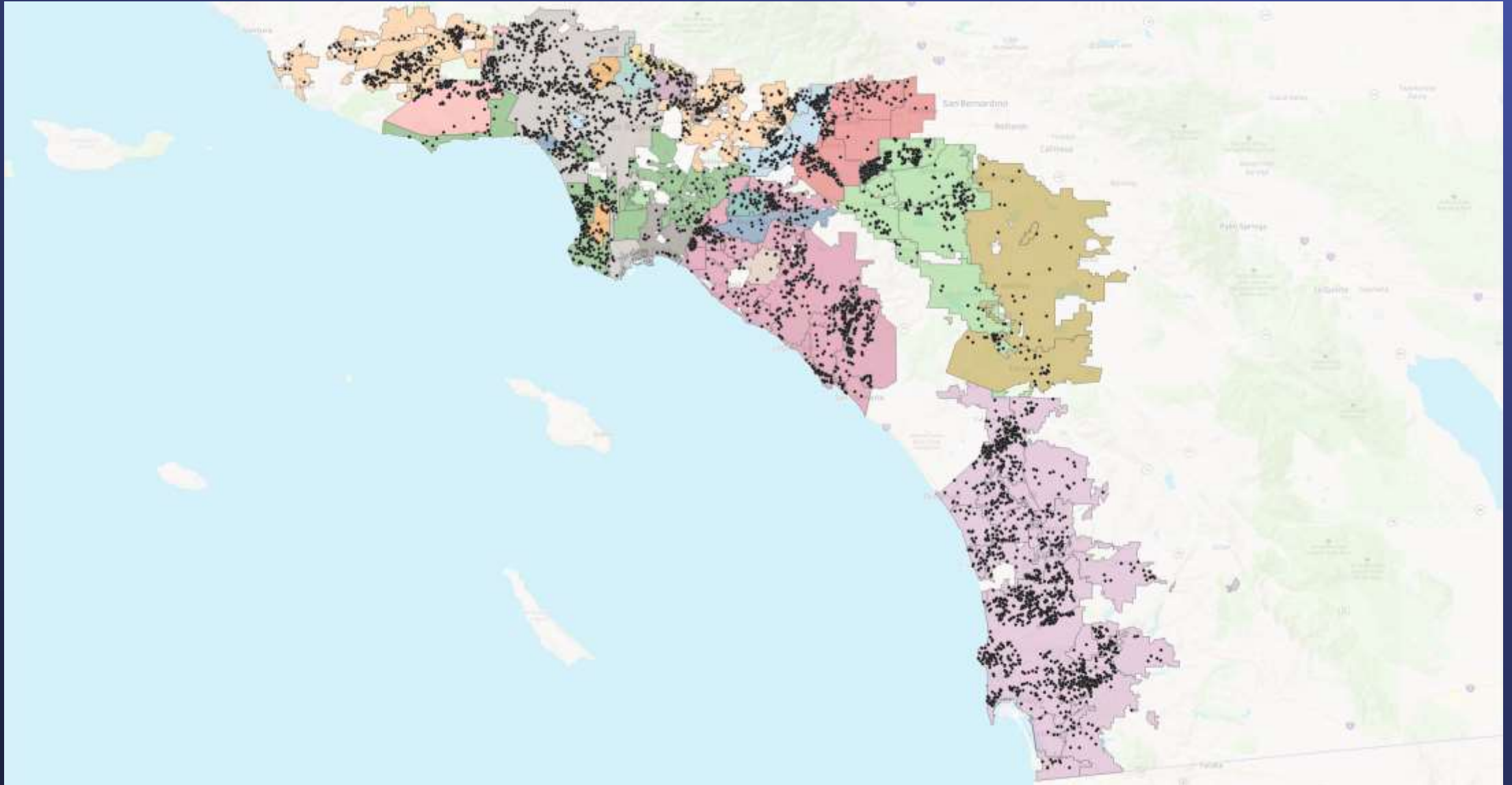
- Water use type determined by water signature
 - Smart technology continually learns use patterns
 - Breakdown of indoor and outdoor use
- Analyzed aggregate water use patterns for MWD service area

Household Water Use Study

Study Considerations

- Customers are self-selected
- Higher than average income
 - Indoor use similar to general population
 - Outdoor use higher than general population
- Household demographics are self-reported

Over 6,000 Devices Installed in MWD Service Area



Demographics

Number of Households	6,014
-----------------------------	--------------

Average Home Age	42.6 years
-------------------------	-------------------

Avg. Number of Residents	3.2
---------------------------------	------------

Avg. Lot Size	21,033 Sq Ft
----------------------	---------------------

Median Lot Size	8,465 Sq Ft
------------------------	--------------------

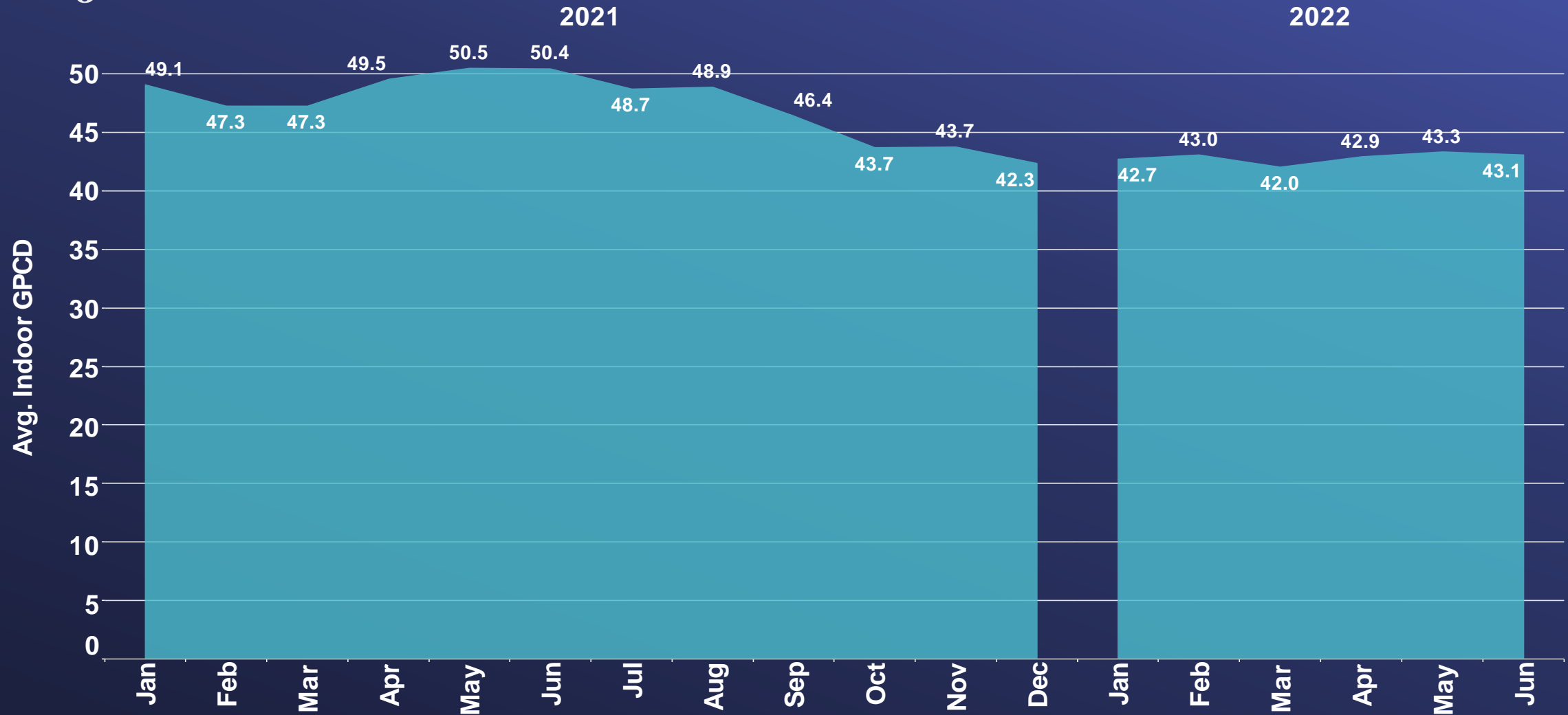
Avg. Home Size	2,570 Sq Ft
-----------------------	--------------------

Indoor and Outdoor Gallons per Household per Day

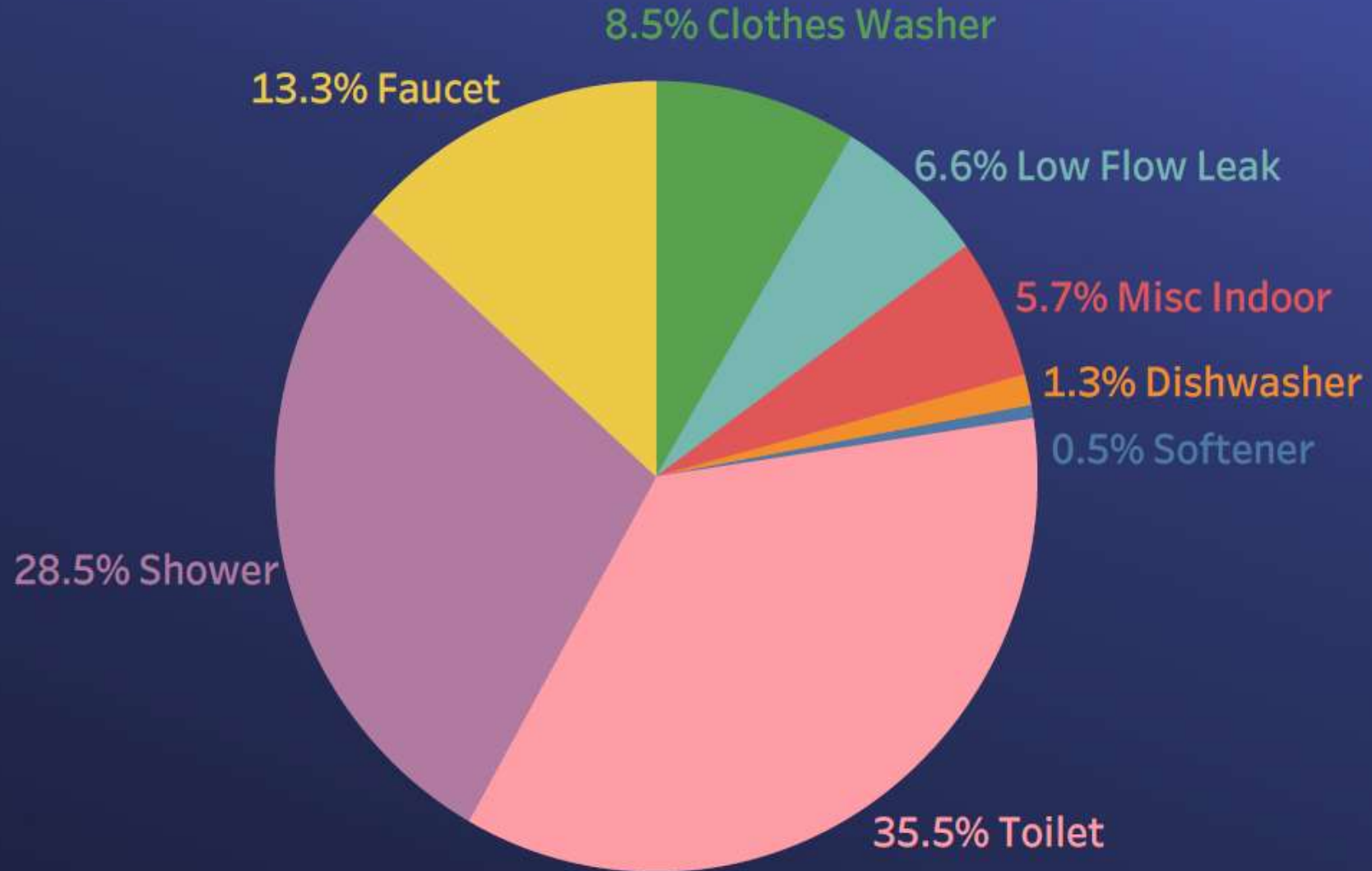


Indoor Use Analysis (GPCD)

Indoor GPCD Average Lower Than CAAWOL Objective

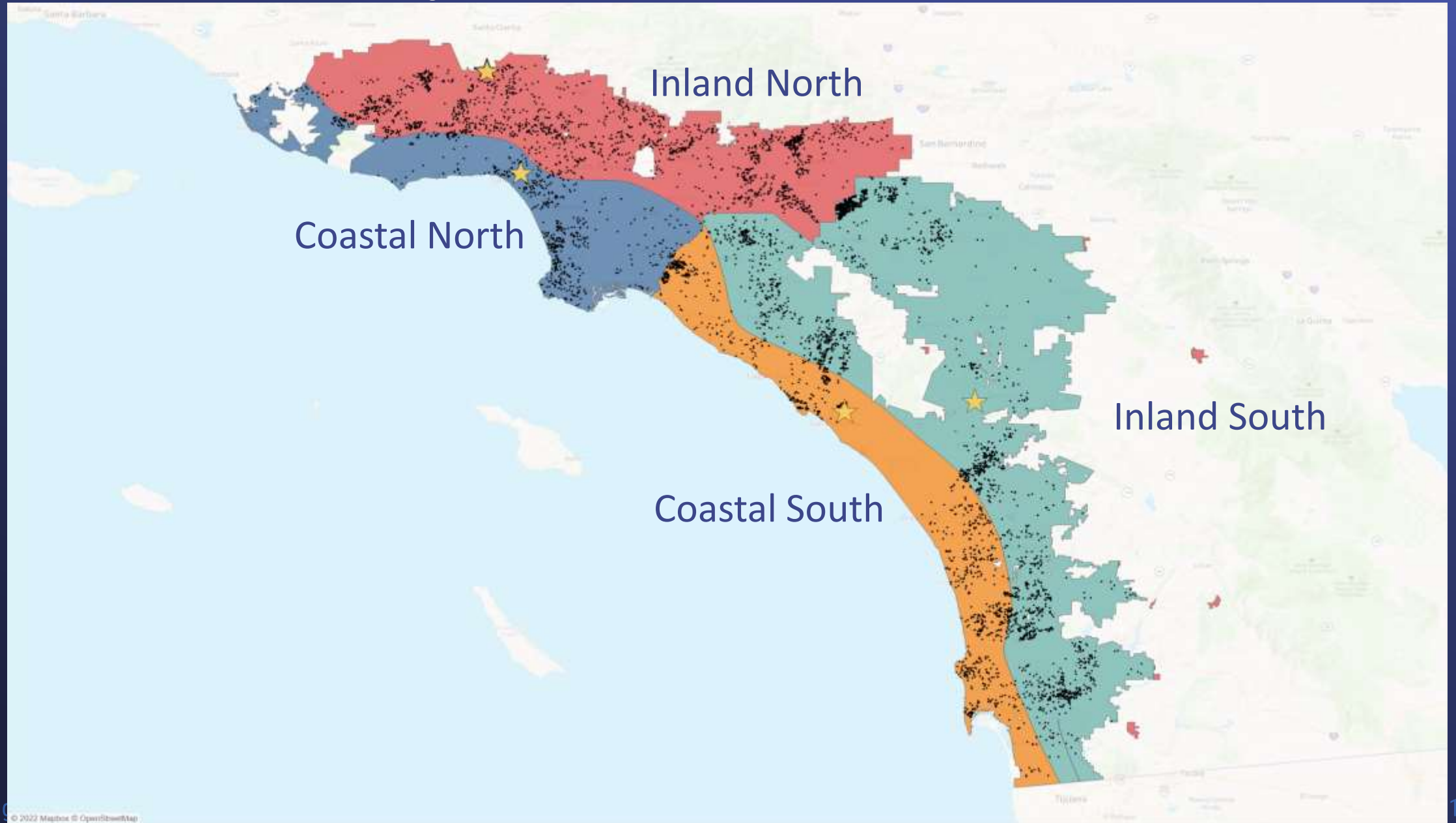


Indoor Water Use Breakdown



Outdoor Use Analysis (GPHD)

Climate Zone Analysis



Customers Respond When It Rains

Climate Zone: Coastal South

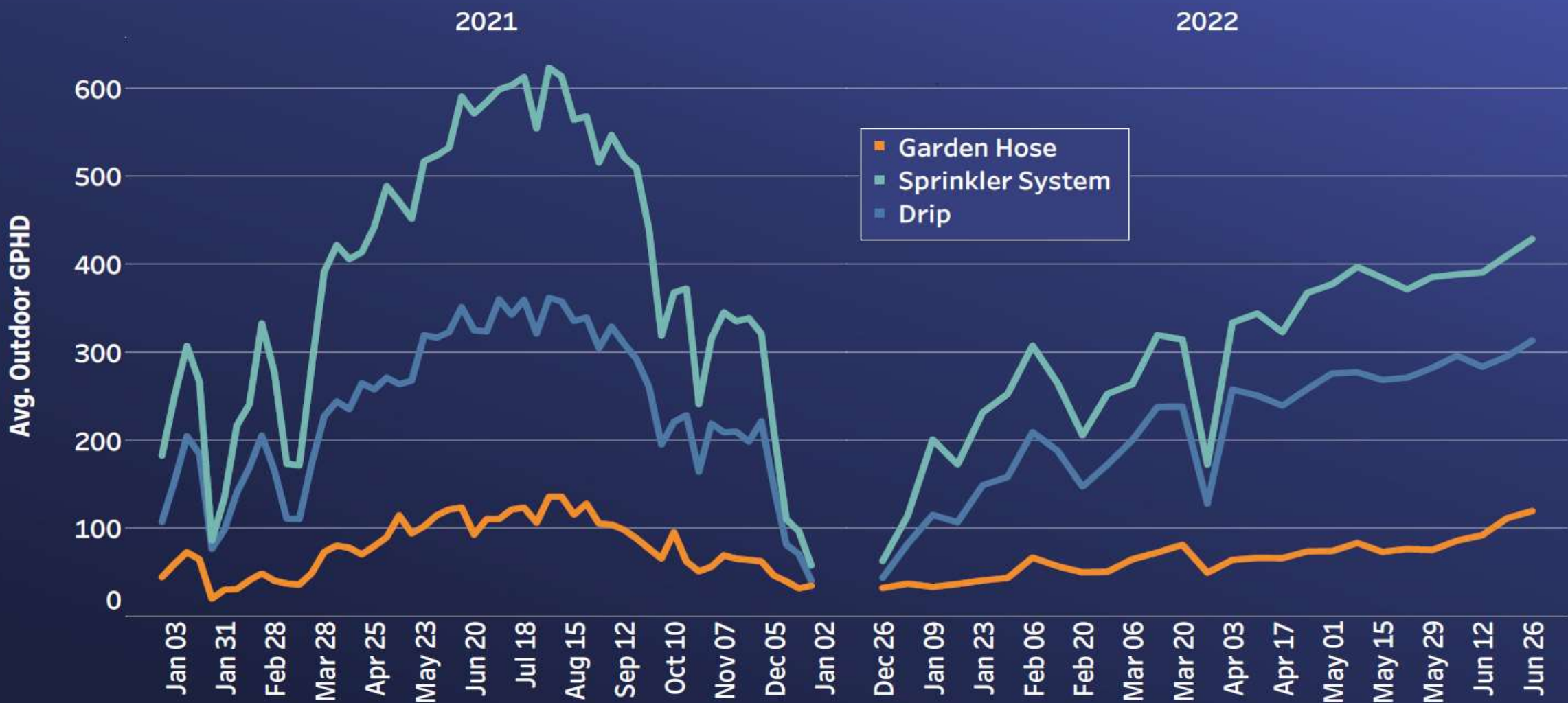


Customers Respond When It Rains

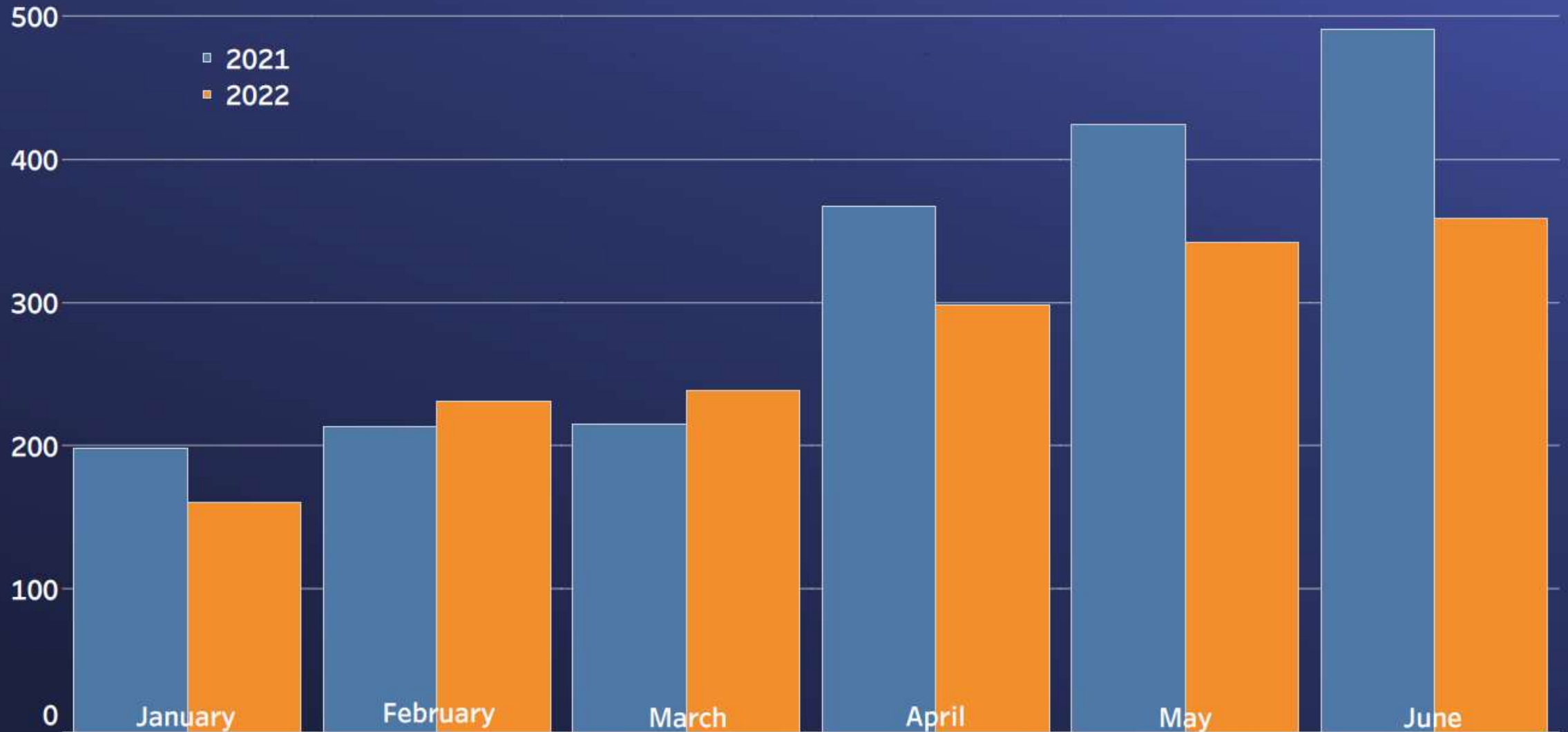
Climate Zone: Inland North



Large Variation in Water Use by Irrigation Type



AVG Outdoor GPHD Decreased from 2021 to 2022



Number of Irrigation Days Follows Seasonal Pattern

Non-SWP Dependent Households



Average Irrigation Days per Household Declining in SWP Dependent Area

SWP Dependent Households



Outdoor household water use is declining compared to 2021 (limited data before 2021)



Greater reduction in household water use for SWP-Dependent Areas

SWP Dependent Households



Household Water Use Study

Key Findings

- Indoor use is flat indicating high level of saturation with indoor conserving devices
- Significant differences observed in outdoor use based on irrigation type
- Continued need for irrigation upgrades
- Outdoor use is dropping service area wide and in SWP dependent areas
 - Effective drought messaging
 - SWP dependent area restrictions

Household Water Use Study

Next Steps

- Study continues through end of 2022
- Board update in the Fall with complete summer analysis
 - MWD service area
 - SWP Dependent areas
 - DAC analysis
- Continued marketing of residential leak program to increase number of devices

