



Water Planning and Stewardship Committee

# Review of Policy Principles Regarding the Sacramento- San Joaquin River Bay-Delta

Item 9-2

August 15, 2022

# Policy Principles Review





## Agenda

- Recap and Overview
- Revised Bay-Delta Policy Framework
- Example Policy Application
- Next Steps

# Recap and Overview

# BDI Policy Update Timeline

## Fall Action

	Oct	Nov	Dec	Jan	Feb	Mar	Apr	May	Jun	Jul	Aug	Sep
Staff Research and Development												
Kick Off with BDI Committee												
Policy Review with WP&S Committee												
Board Info and Action Items							REPORT				INFO	ACTION

# Why Update the Bay-Delta Policies?

## Existing Bay-Delta Policies

- 4 Policy themes (2006)
- 13 Policy Principles
- Short-, Mid-, Long- Term Framework (2007)
- 6 Conveyance Criteria (2007)
- Delta Action Plan (2007)
- Delta Governance Principles (2008)
- Delta Vision Implementation (2009)

## Draft Bay-Delta Policies Framework

- 6 Policy Areas
  - 18 Policy Principles

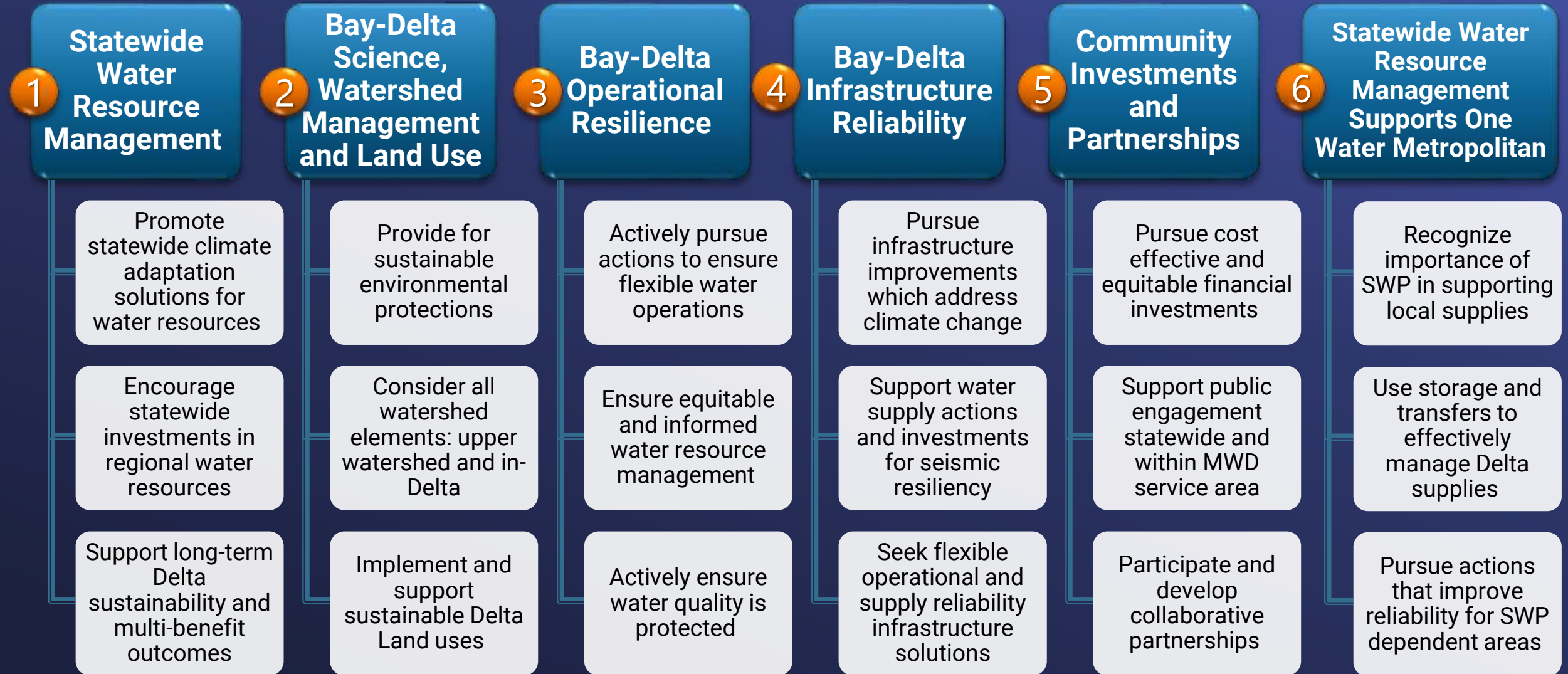


## Revised Bay-Delta Policies Framework

- 3 Policy Objectives
- 3 Policy Areas
  - 9 Policy Principles

# Revised Framework

# DRAFT Bay-Delta Policy Framework: Policy Areas and Principles



## Bay-Delta Policy Objectives

- Promote a Sustainable Bay-Delta within Metropolitan's One Water Approach
- Support Statewide and Regional Actions that Improve Bay-Delta Sustainability
- Address the Risks Associated with Climate Change

### Bay-Delta Policy Framework

Science and Watershed Management	Water Supply Reliability and Resilience	Partnerships and Cost-Effective Investments
Protect and restore aquatic species and habitats based on best available science	Protect water supply reliability and water quality	Maintain and pursue cost-effective financial investments
Partner in watershed-wide approaches to develop comprehensive solutions	Invest in actions that provide seismic and climate resiliency	Foster broad and inclusive engagement of Delta interests and beneficiaries
Advance responsible stewardship of Metropolitan's Delta islands	Seek flexible operations, water management actions, and infrastructure solutions	Promote innovative and multi-benefit initiatives



# Example Policy Applications

## Use of Bay-Delta Policies

- Provide board direction to staff related to Bay-Delta activities:
  - Program and project management
  - External engagement
  - Longer term planning
  - Key Investments
  - Day to day activities
- Inform future proposed board actions
- Final Board deliberation and actions would still be addressed individually

# Example Application

## Bay-Delta Policy Objectives

- Promote a Sustainable Bay-Delta within Metropolitan's One Water Approach
- Support Statewide and Regional Actions that Improve Bay-Delta Sustainability
- Address the Risks Associated with Climate Change

## Bay-Delta Policy Framework

Science and Watershed Management	Water Supply Reliability and Resilience	Partnerships and Cost-Effective Investments
Protect and restore aquatic species and habitats based on best available science	Protect water supply reliability and water quality	Maintain and pursue cost-effective financial investments
Partner in watershed-wide approaches to develop comprehensive solutions	Invest in actions that provide seismic and climate resiliency	Foster broad and inclusive engagement of Delta interests and beneficiaries
Advance responsible stewardship of Metropolitan's Delta islands	Seek flexible operations, water management actions, and infrastructure solutions	Promote innovative and multi-benefit initiatives

**Delta Islands –  
Delta Smelt and Native  
Species Preservation  
Project**



# Example Application

## Bay-Delta Policy Objectives

- Promote a Sustainable Bay-Delta within Metropolitan's One Water Approach
- Support Statewide and Regional Actions that Improve Bay-Delta Sustainability
- Address the Risks Associated with Climate Change

## Delta Conveyance Project



## Bay-Delta Policy Framework

Science and Watershed Management	Water Supply Reliability and Resilience	Partnerships and Cost-Effective Investments
Protect and restore aquatic species and habitats based on best available science	Protect water supply reliability and water quality	Maintain and pursue cost-effective financial investments
Partner in watershed-wide approaches to develop comprehensive solutions	Invest in actions that provide seismic and climate resiliency	Foster broad and inclusive engagement of Delta interests and beneficiaries
Advance responsible stewardship of Metropolitan's Delta islands	Seek flexible operations, water management actions, and infrastructure solutions	Promote innovative and multi-benefit initiatives



# Example Application

## Bay-Delta Policy Objectives

- Promote a Sustainable Bay-Delta within Metropolitan's One Water Approach
- Support Statewide and Regional Actions that Improve Bay-Delta Sustainability
- Address the Risks Associated with Climate Change

Emergency  
Freshwater Pathway



## Bay-Delta Policy Framework

Science and Watershed Management	Water Supply Reliability and Resilience	Partnerships and Cost-Effective Investments
Protect and restore aquatic species and habitats based on best available science	Protect water supply reliability and water quality	Maintain and pursue cost-effective financial investments
Partner in watershed-wide approaches to develop comprehensive solutions	Invest in actions that provide seismic and climate resiliency	Foster broad and inclusive engagement of Delta interests and beneficiaries
Advance responsible stewardship of Metropolitan's Delta islands	Seek flexible operations, water management actions, and infrastructure solutions	Promote innovative and multi-benefit initiatives

# Example Application

## Bay-Delta Policy Objectives

- Promote a Sustainable Bay-Delta within Metropolitan's One Water Approach
- Support Statewide and Regional Actions that Improve Bay-Delta Sustainability
- Address the Risks Associated with Climate Change

## Bay-Delta Policy Framework

Science and Watershed Management	Water Supply Reliability and Resilience	Partnerships and Cost-Effective Investments
Protect and restore aquatic species and habitats based on best available science	Protect water supply reliability and water quality	Maintain and pursue cost-effective financial investments
Partner in watershed-wide approaches to develop comprehensive solutions	Invest in actions that provide seismic and climate resiliency	Foster broad and inclusive engagement of Delta interests and beneficiaries
Advance responsible stewardship of Metropolitan's Delta islands	Seek flexible operations, water management actions, and infrastructure solutions	Promote innovative and multi-benefit initiatives

**Delta Islands –  
Lease Exclusively for  
Permanent Crops**





# Example Application

## Bay-Delta Policy Objectives

- Promote a Sustainable Bay-Delta within Metropolitan's One Water Approach
- Support Statewide and Regional Actions that Improve Bay-Delta Sustainability
- Address the Risks Associated with Climate Change

**Pure Water –  
Reducing Reliance on  
Imported Supplies**



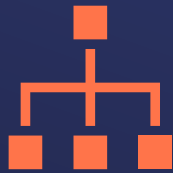
## Bay-Delta Policy Framework

Science and Watershed Management	Water Supply Reliability and Resilience	Partnerships and Cost-Effective Investments
Protect and restore aquatic species and habitats based on best available science	Protect water supply reliability and water quality	Maintain and pursue cost-effective financial investments
Partner in watershed-wide approaches to develop comprehensive solutions	Invest in actions that provide seismic and climate resiliency	Foster broad and inclusive engagement of Delta interests and beneficiaries
Advance responsible stewardship of Metropolitan's Delta islands	Seek flexible operations, water management actions, and infrastructure solutions	Promote innovative and multi-benefit initiatives

# Next Steps



# Action Item Fall 2022



**Incorporate Board Feedback  
into Bay-Delta Policy  
Framework and Principles**



**Finalize Policies for  
Board Action  
Memorialize Policies in a  
Written Report**



**Fall Action Item**

