



Engineering & Operations Committee

Second Lower Feeder PCCP Rehabilitation Reach 3A

Item #7-7

May 10, 2022

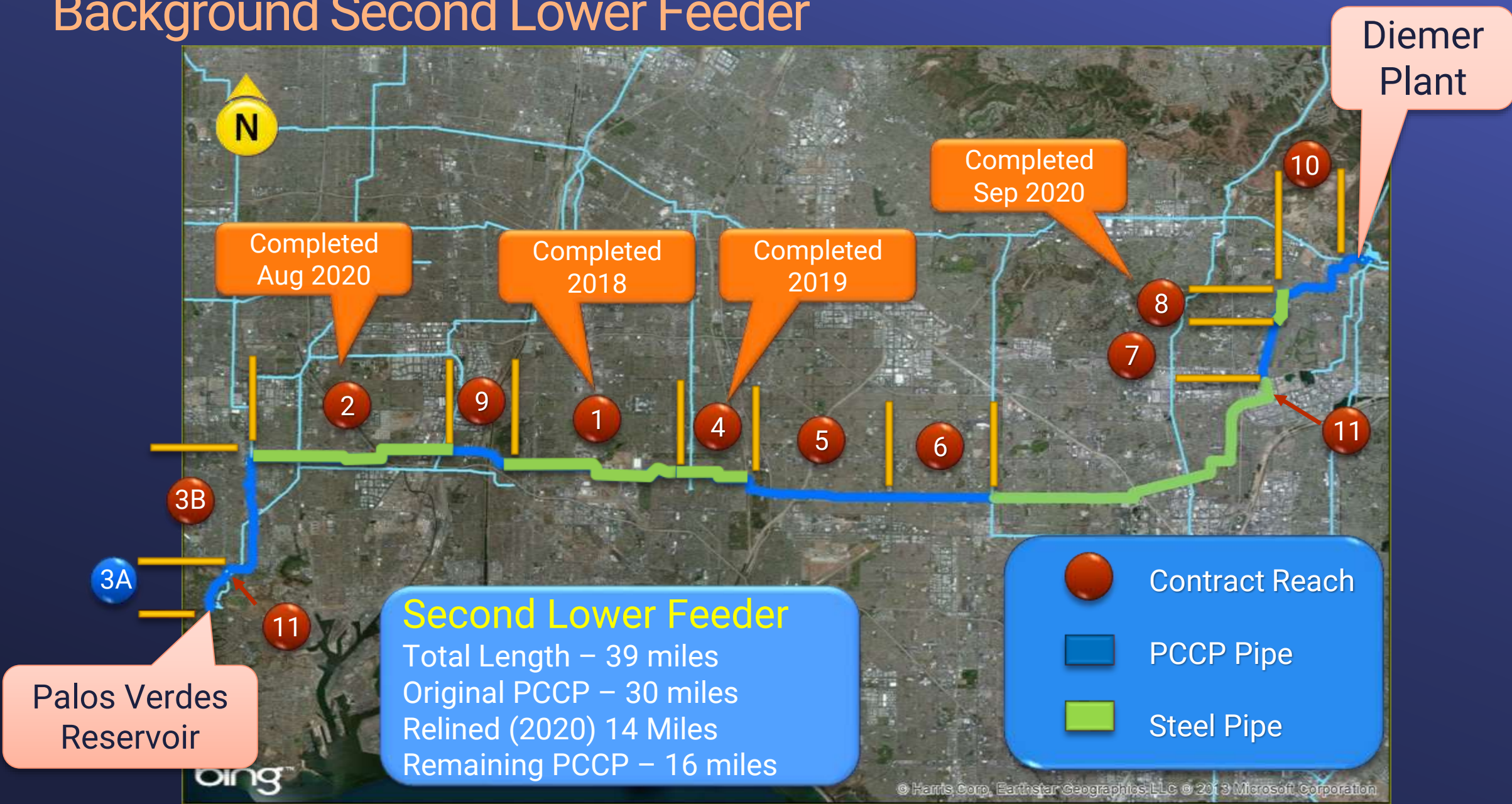
Second
Lower Feeder
PCCP
Rehabilitation
Reach 3A

Current Action

- Award \$11,884,700 contract to J. F. Shea Construction, Inc. to perform construction rehabilitation of portions of the Second Lower Feeder

The map illustrates the proposed Second Lower Feeder project in Southern California. The project route is shown in blue, starting from the Pacific Ocean near the Diemer Plant and extending eastward through the San Gabriel Valley. Key locations marked include the Jensen Plant, Weymouth Plant, Mills Plant, Skinner Plant, and Diamond Valley Lake. The map also shows major highways and geographical features like the San Gabriel River and the San Gabriel Mountains.

Background Second Lower Feeder



Second Lower Feeder PCCP Rehabilitation Reach 3A

Alternatives Considered

- Construction of Reaches 3A & 3B under one construction contract and shutdown
 - Requires an 8-month shutdown
 - Member agencies in this area cannot sustain shutdowns longer than 4 months
- Selected Alternative – Separate Reach 3 into Reaches 3A and 3B
 - Provides greater lead time to procure temporary bypass piping and reduces schedule and materials procurement risks associated with longer shutdowns.

Contractor Scope

- Line approximately 6,500 ft. of existing PCCP
- Rehabilitate all maintenance holes and air release valves
- Construct a new maintenance hole at pipe access site
- Install bulkheads and piping to isolate Palos Verdes Reservoir
- Provide traffic control
- Restore work areas to preexisting conditions



Palos
Verdes
Reservoir
Bulkhead
Installations

Metropolitan Scope

- Dewater and return pipeline to service
- Fabrication inspection
- Construction management/inspection
- Submittal review and record drawings
- Coordinate license for temp R/W with local agency
- Permitting, outreach, & program management

Typical Pipe Access Site



Unloading and Storage of steel liner for Reaches 3A and 3B

Bid Results

Specifications No. 1903

Bids Received	April 5, 2022
No. of Bidders	2
Low Bidder	J. F. Shea Construction, Inc.
Low Bid	\$11,884,700
Other Bid	\$23,967,049
Engineer's estimate	\$16.5 M
SBE Participation*	13%

*SBE (Small Business Enterprise) participation level set at 5%

Allocation of Funds

Contract

J. F. Shea Construction, Inc.	\$11,884,700
-------------------------------	--------------

Metropolitan Labor

Program mgmt., permitting, contract admin. & travel	814,000
---	---------

Force Construction	1,644,000
--------------------	-----------

Construction Management/Inspection	2,010,000
------------------------------------	-----------

Submittal review, technical support, & record drwgs.	384,000
--	---------

Incidental, Materials & Supplies	550,000
----------------------------------	---------

Right-of-Way	427,000
--------------	---------

Professional Services

Black & Veatch	255,000
----------------	---------

Helix Group Inc.	200,000
------------------	---------

Water Systems Consulting	75,000
--------------------------	--------

Welding Inspection	90,000
--------------------	--------

Remaining Budget	766,300
------------------	---------

Total	\$19,100,000
-------	--------------

Project Schedule



 Board Action

 Construction

 Completion of Construction

 Shutdown

Board Options

- Option #1

Review and consider Addendum No. 5 to the 2017 Programmatic Environmental Impact Report, and award an \$11,884,700 contract to J. F. Shea Construction, Inc. to procure materials and perform construction for the rehabilitation of portions of the Second Lower Feeder.

- Option #2

Do not move forward to rehabilitate Reach 3A of the Second Lower Feeder at this time.

Staff Recommendation

- Option #1

