



Water Planning and Stewardship Committee

# Bay-Delta Policy Update Workshop One

Item 6e

April 12, 2022

Workshop One

# Bay Delta Policy Update

## Overview



Background: Bay-Delta Policies

---



Research and Staff Workshops

---



Bay-Delta Policy Development  
and Framework

---



Policy Framework Application





---



Discussion

# BDI Policy Update Timeline

## June Action

|                                | Oct  | Nov   | Dec | Jan | Feb | Mar | Apr   | May   | Jun           |
|--------------------------------|--|---|-----|-----|-----|-----|---|---|---------------|
| Staff Research and Development |  |   |     |     |     |     |   |   |               |
| Kick Off with BDI Committee    |  |  |     |     |     |     |   |   |               |
| Committee Workshops 1+2        |  |   |     |     |     |     |  |  |               |
| Board Info and Action Items    |  |   |     |     |     |     |   | <b>INFO</b>   | <b>ACTION</b> |

# Background: Bay Delta Policies


# Existing Board Adopted Bay-Delta Policies



Policy Principles 2006  
(Policy Principles - Themes)



Delta Action Plan Framework 2007  
(Short, Mid, and Long Term)



Delta Conveyance Criteria 2007  
(Near, Long Term and Approved  
Conveyance Criteria)

**Other Key Bay-Delta Board actions:** Bay-Delta Finance & Cost Allocation (May 2004), Delta Governance Principles (August 2008), Delta Vision Implementation (Jan 2009), Delta Related Legislation (April 2009)

# Four Central Policy Themes (2006)

Focus on a long-term Sustainable Delta

Promote Statewide Integrated Resource Management Actions – consistent with IRP

Long-Term Solutions Must be Cost-Effective and Fairly Apportion Costs to All Beneficiaries

Pursue continued Implementation/Protection of Drinking Water Supplies/Quality Facility Improvements



# (2006) Application of Existing Bay-Delta Policies and key initiatives

Conveyance  
Criteria

Delta Action  
Framework



**CSAMP**



2006

2008

2010

2012

2014

2016

2018

2020

Bay-Delta Policy  
Principles

Delta Governance  
Principles



# Why Update the Bay-Delta Policies?



Policies have not been updated in over 15 years



Policy structure is dense and spread over multiple board actions



Policies can be difficult to understand for both decision makers and the public



Metropolitan's policies should be clear and concise to support the board's future oversight and actions



# Research and Staff Workshops

# Summarized Research

26

Detailed policy profiles focused on current issues and emerging trends completed by Subject Matter Experts.

50+

Internal workshop participants from across the organization

173

Comments reviewed and categorized

# Emerging Trends



## **Climate change impacts on hydrology**

Increased intensity and frequency of droughts, wildfires, floods



## **Joint funding and partnerships are occurring statewide**

Watershed wide partnerships, multi-agency science partnerships, project partnerships



## **Delta Sustainability has become even more critical**

Strain on environment, multi-benefit projects trending, co-existing environment and water supply needs

# Highlights and Key Points



**Community building in the Delta**



**Promote sustainable farming practices in Delta (flexible leases)**



**Delta Conveyance planning should emphasize proposed project operational reliability**



**Local resource development still requires imported water for recycling and groundwater recharge**



**Multi-benefit restoration projects are essential, streamlining permitting processes is a must**



**Energy sustainability and reliability is a paramount concern, but should not be at the expense of water suppliers**

# Bay-Delta Policy Development and Framework

**Objective:** Restructure policies to align with emerging trends while preserving topics that are still relevant to the Board's ongoing direction



# Key Six Policy Areas



Policy Area 1: Statewide Water Resource Management



Policy Area 2: Bay-Delta Science, Watershed Management, and Land use



Policy Area 3: Bay-Delta Operational Resilience



Policy Area 4: Bay-Delta Infrastructure Reliability

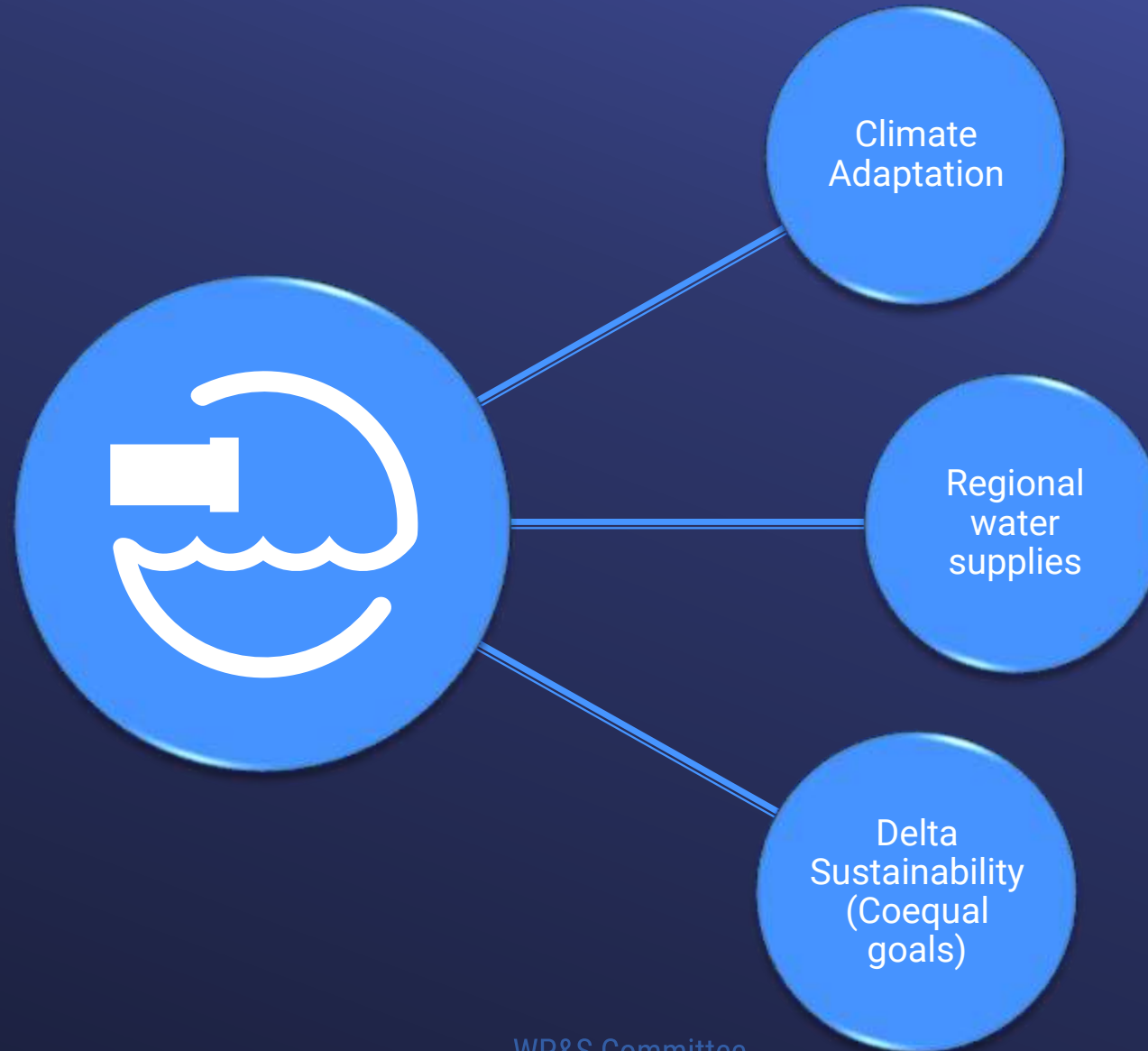


Policy Area 5: Community Investments and Partnerships

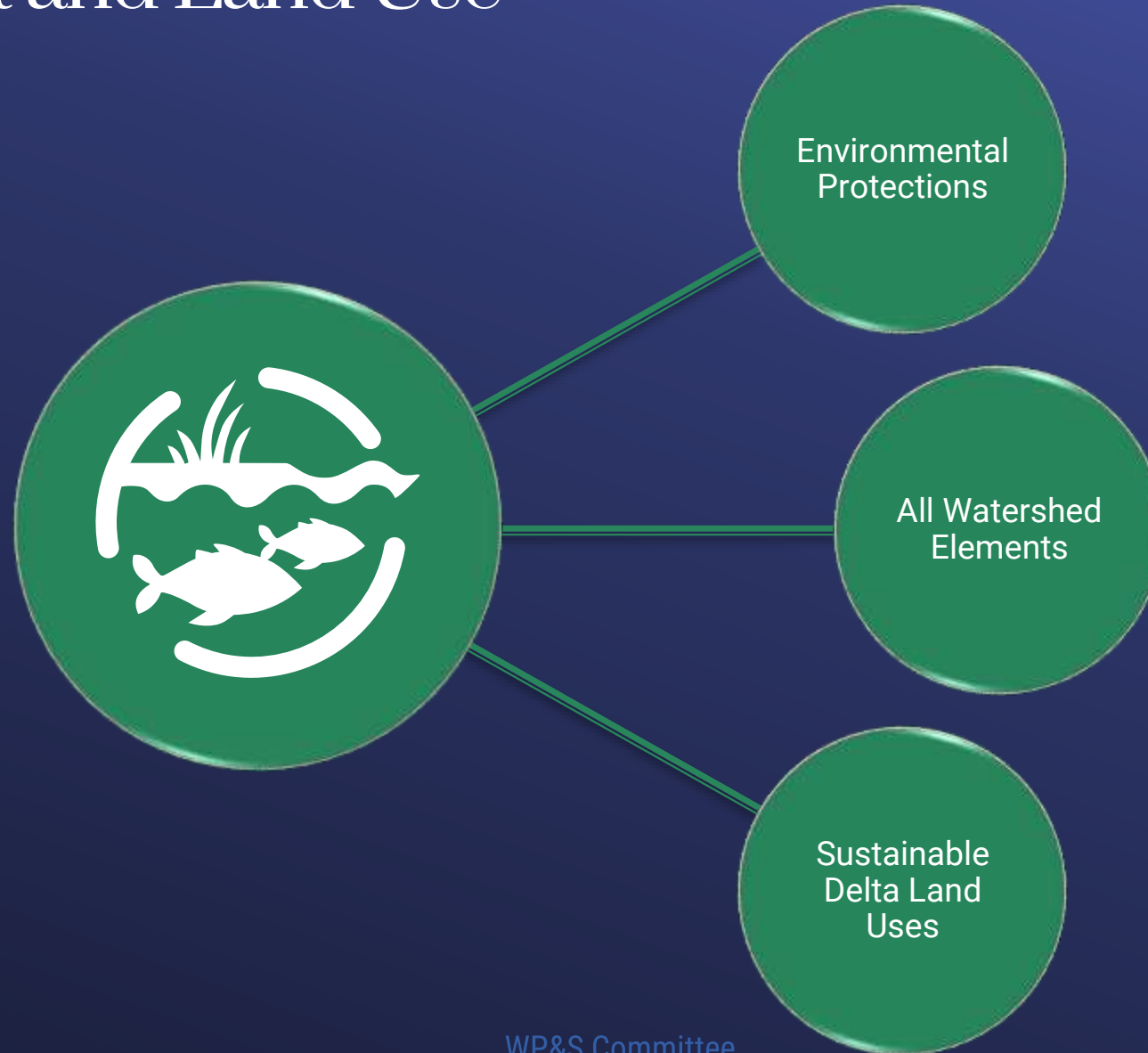


Policy Area 6: Statewide Water Resources Management Supports MWD's One Water

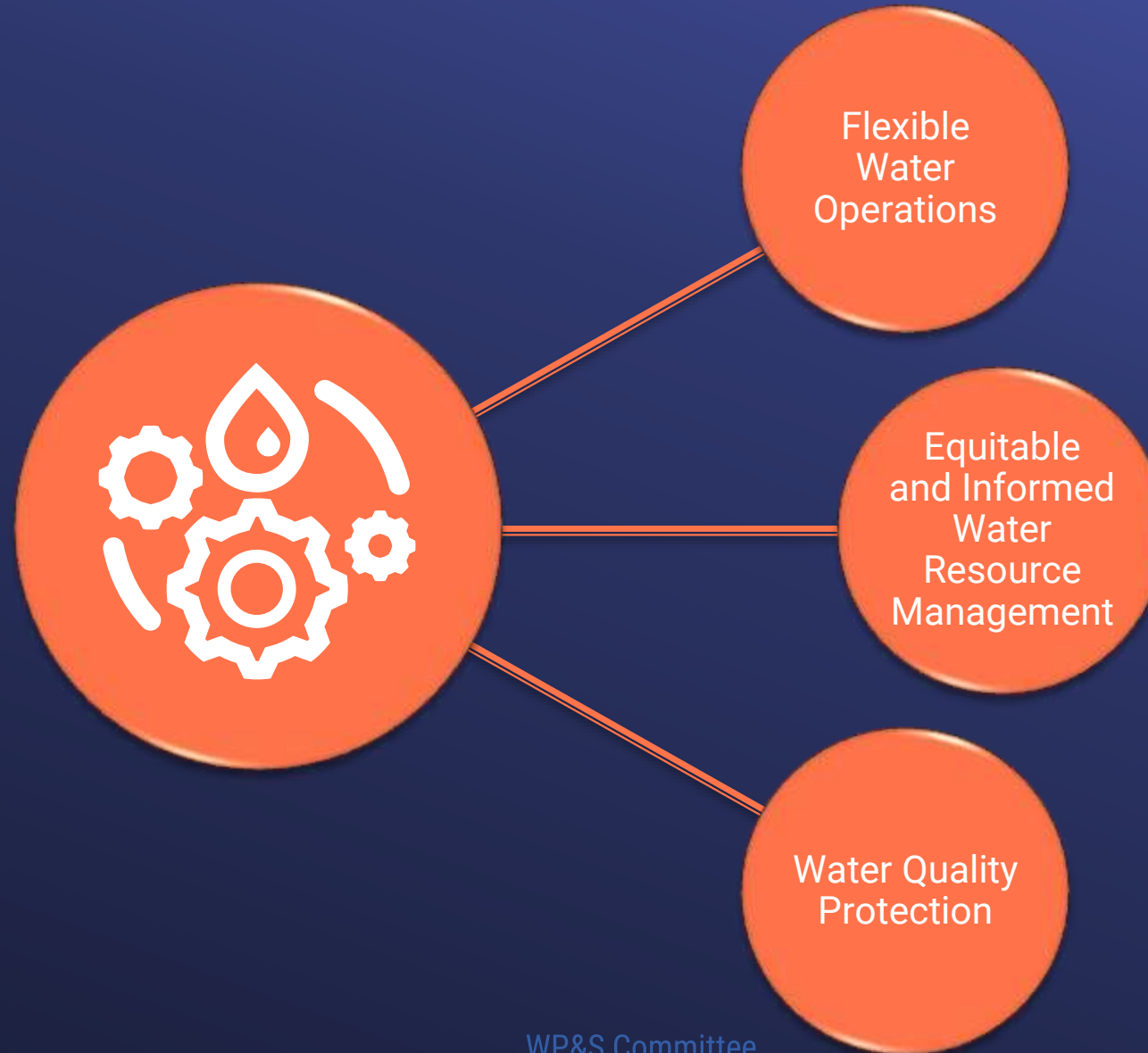
# Policy Area I: Statewide Water Resource Management



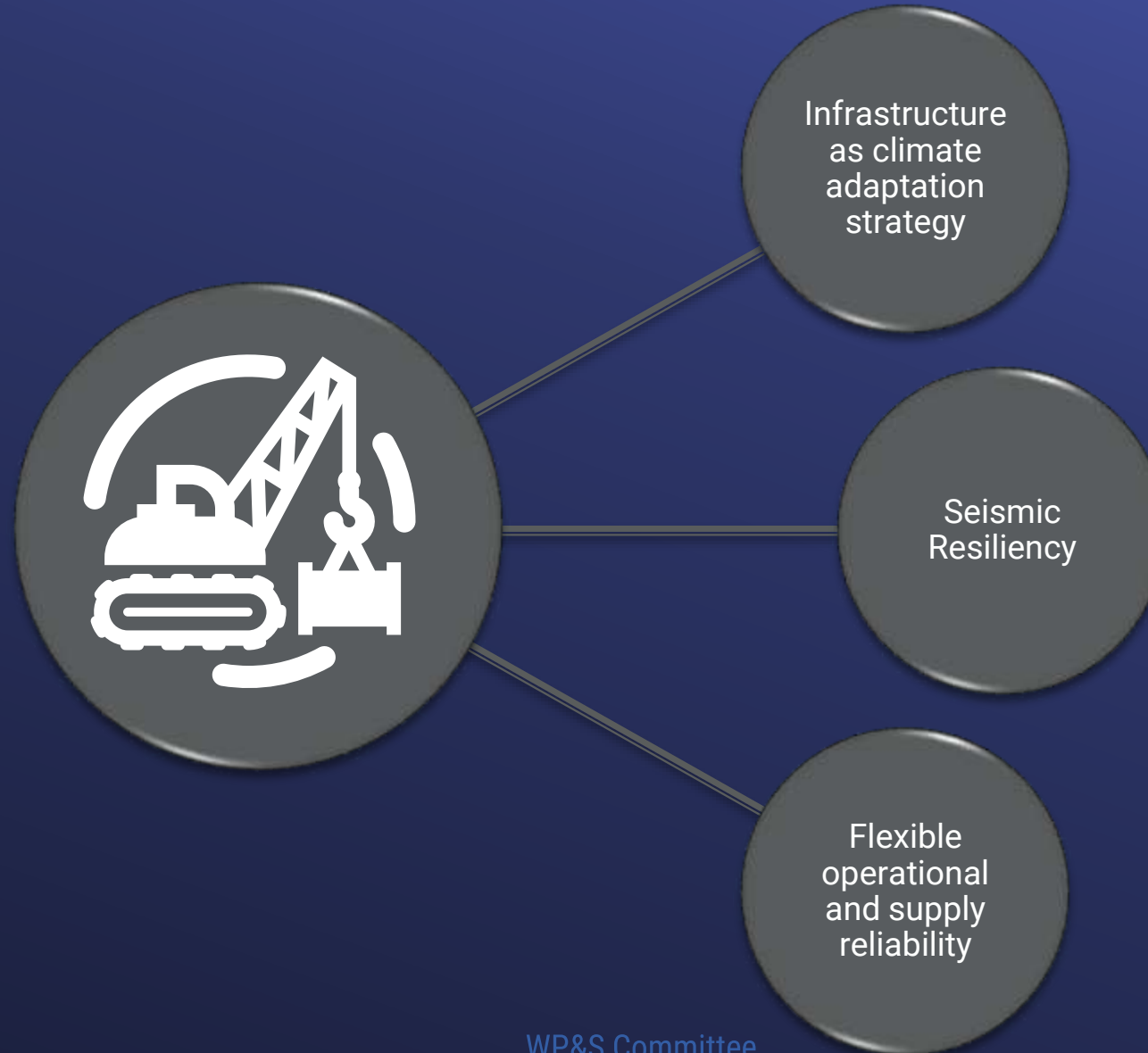
# Policy Area 2: Bay-Delta Science, Watershed Management and Land Use



# Policy Area 3: Bay-Delta Operational Resilience



# Policy Area 4: Bay-Delta Infrastructure Reliability



# Policy Area 5: Community Investments and Partnerships

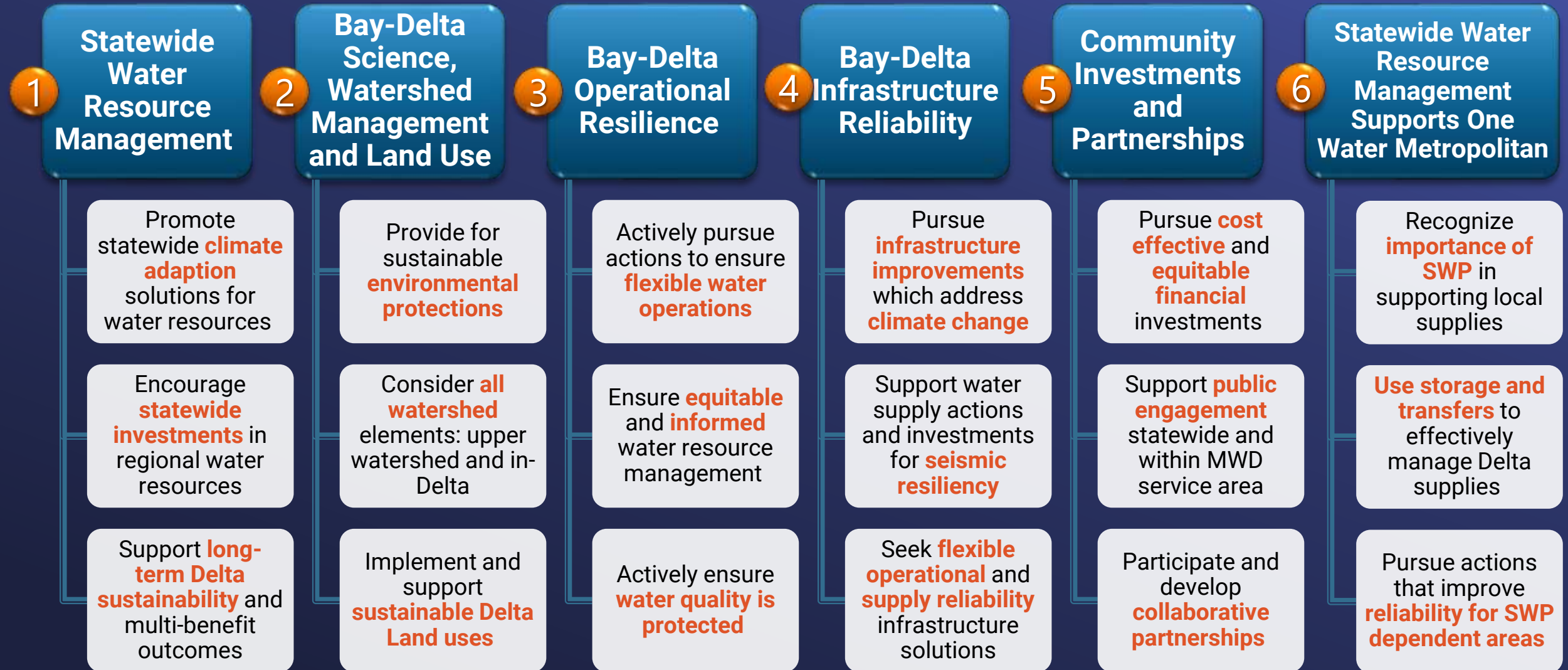




# Policy Area 6: Statewide Water Resources Management Supports MWD's One Water



# DRAFT Bay-Delta Policy Framework: Policy Areas and Principles



# Applying the Bay-Delta Policy Framework

Workshop One

# Policy Framework

## Use of Bay-Delta Policies

- Provide board direction to staff related to Bay-Delta activities:
  - Program and project management
  - External engagement
  - Longer term planning
  - Key Investments
  - Day to day activities
- Align with proposed future board actions
- Final Board deliberation and actions would still be addressed individually

# Policy Application – Delta Science



## Policy Area 1: Statewide Water Resource Management

- Support long term Delta sustainability and multi-benefit outcomes



## Policy Area 2: Bay-Delta Science, Watershed and Land Use Management

- Provide sustainable environmental protections



## Policy Area 5: Community Investments and Partnerships

- Participate and develop collaborative partnerships

# Policy Application – Delta Islands



## Policy Area 2: Bay-Delta Science, Watershed and Land Use Management

- Implement and support sustainable Delta Land uses



## Policy Area 4: Bay-Delta Infrastructure Reliability

- Pursue infrastructure improvements which address climate change
- Support water supply actions and investments for seismic resiliency



## Policy Area 5: Community Investments and Partnerships

- Participate and develop collaborative partnerships



# Policy Application – Delta Infrastructure



## Policy Area 1: Statewide Water Resource Management

- Encourage statewide investments in regional water resources



## Policy Area 3: Bay-Delta Operational Resilience

- Actively ensure water quality is protected



## Policy Area 4: Bay-Delta Infrastructure Reliability

- Support water supply actions and investments for seismic resiliency

# Discussion

# Next Steps

# Committee Workshop #2

## May 2022



**Review DRAFT Bay-Delta Framework and policy principles**



**Discuss key policies**



**Solicit Board Input / Discussion**



**Next Steps:**

**Update and Finalize Policies  
for Board adoption**

**May Info Item**

**June Action Item**

