



Encroachment Prevention Update

Real Property & Asset Management Committee
Item 6b
March 8, 2022

Metropolitan Background

- Metropolitan has rights to approximately 211,000 acres of Real Property, referred to as Metropolitan's right of way (ROW)
 - 175,000 acres -Fee
 - 36,000 acres- Easements
- 



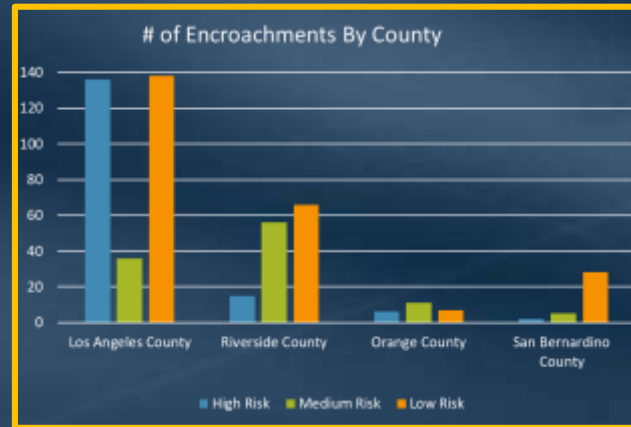
Encroachment Definition

Any situation in which a person or entity trespasses or uses Metropolitan's fee property without consent, prior rights, or interferes with Metropolitan's ability to use its easements.



Encroachment Resolution Process

- Research
 - Mapping tools, Documents, Surveys
- Ranking
 - High, Med, Low
- Notification
 - Letters
- Resolution

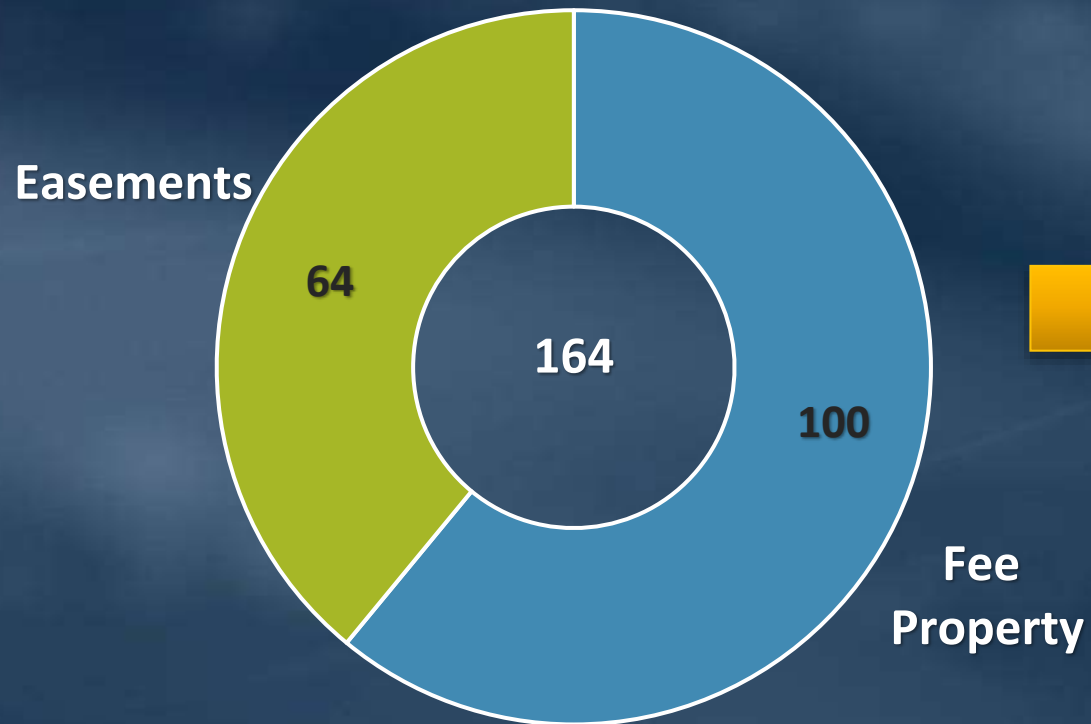


Encroachments by County



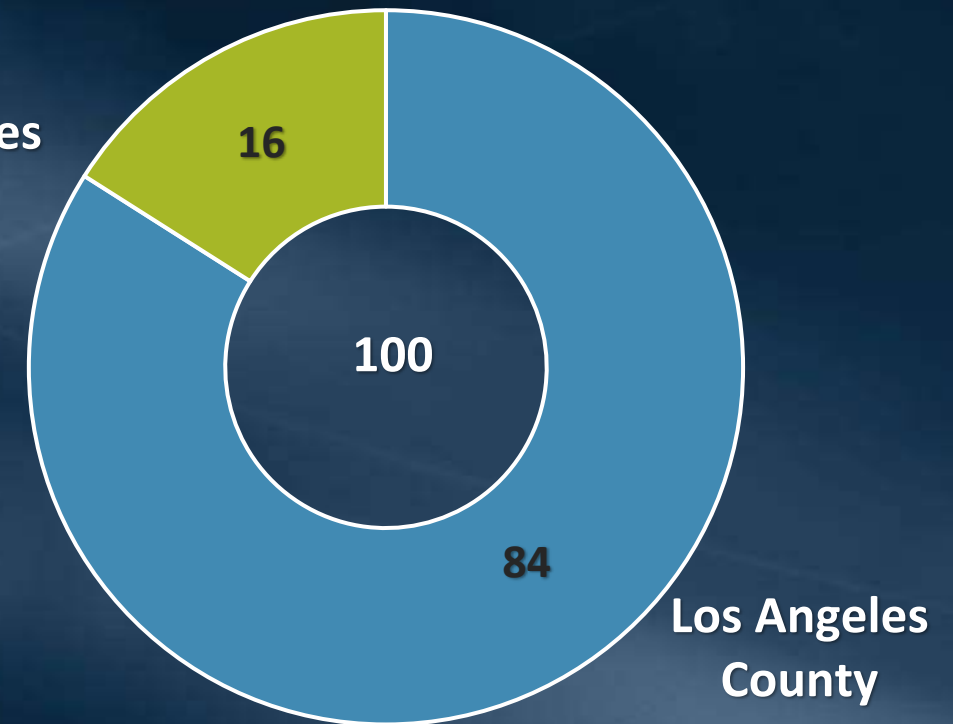
Encroachment Resolution Status

164 High Priority Encroachments



Other
Counties

100 High Priority Fee



84 Encroachments - LA County, High Priority, Fee

Research

22 Conducting Research
62 Research Completed

Working

14 Communication
11 Surveys
3 Notice

Potential Agreement

16 Considering Agreements

Resolved

5 Removed
5 Existing Rights
8 No encroachment

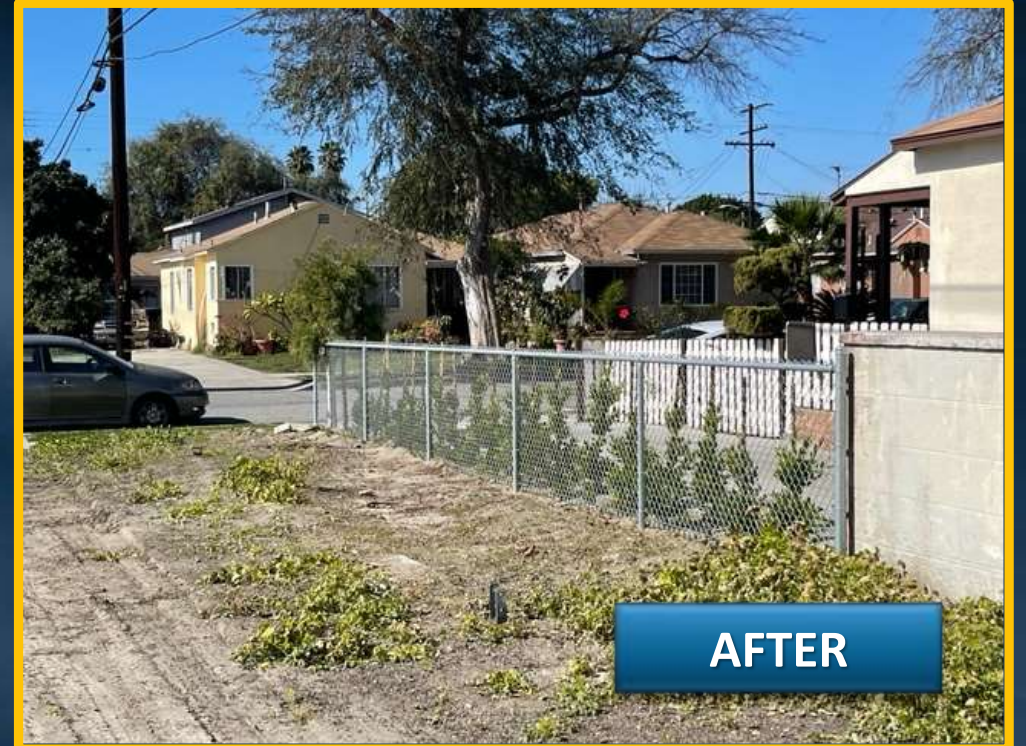
28

16

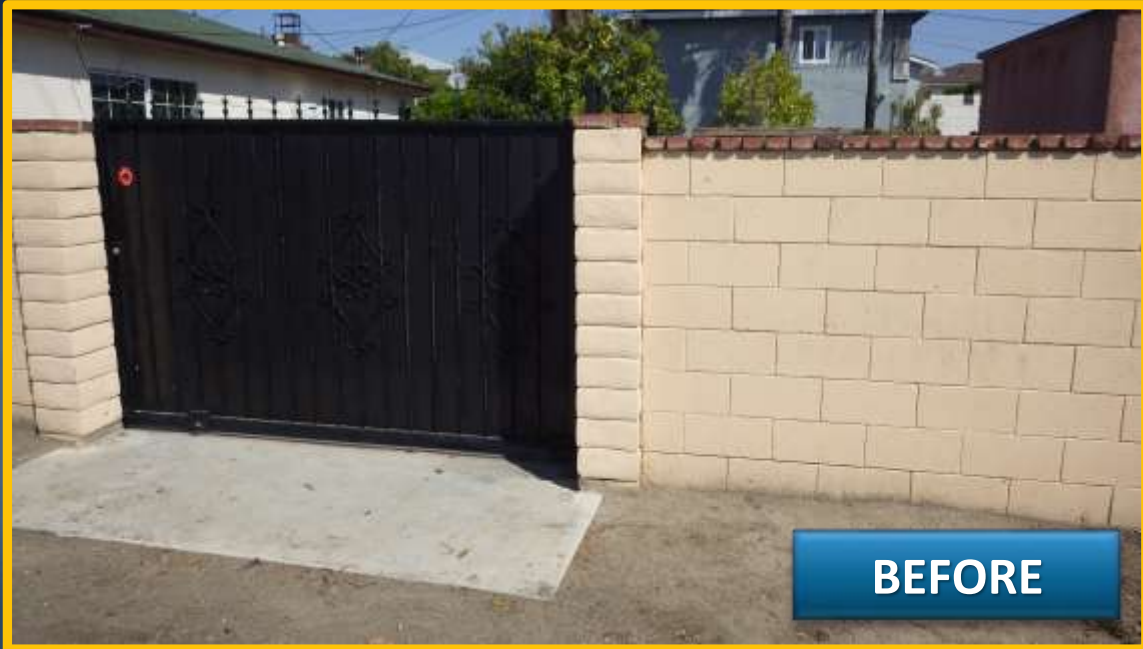
18

62 Encroachments

Encroachment-Resolution



Encroachment-Resolution



Encroachment-Resolution

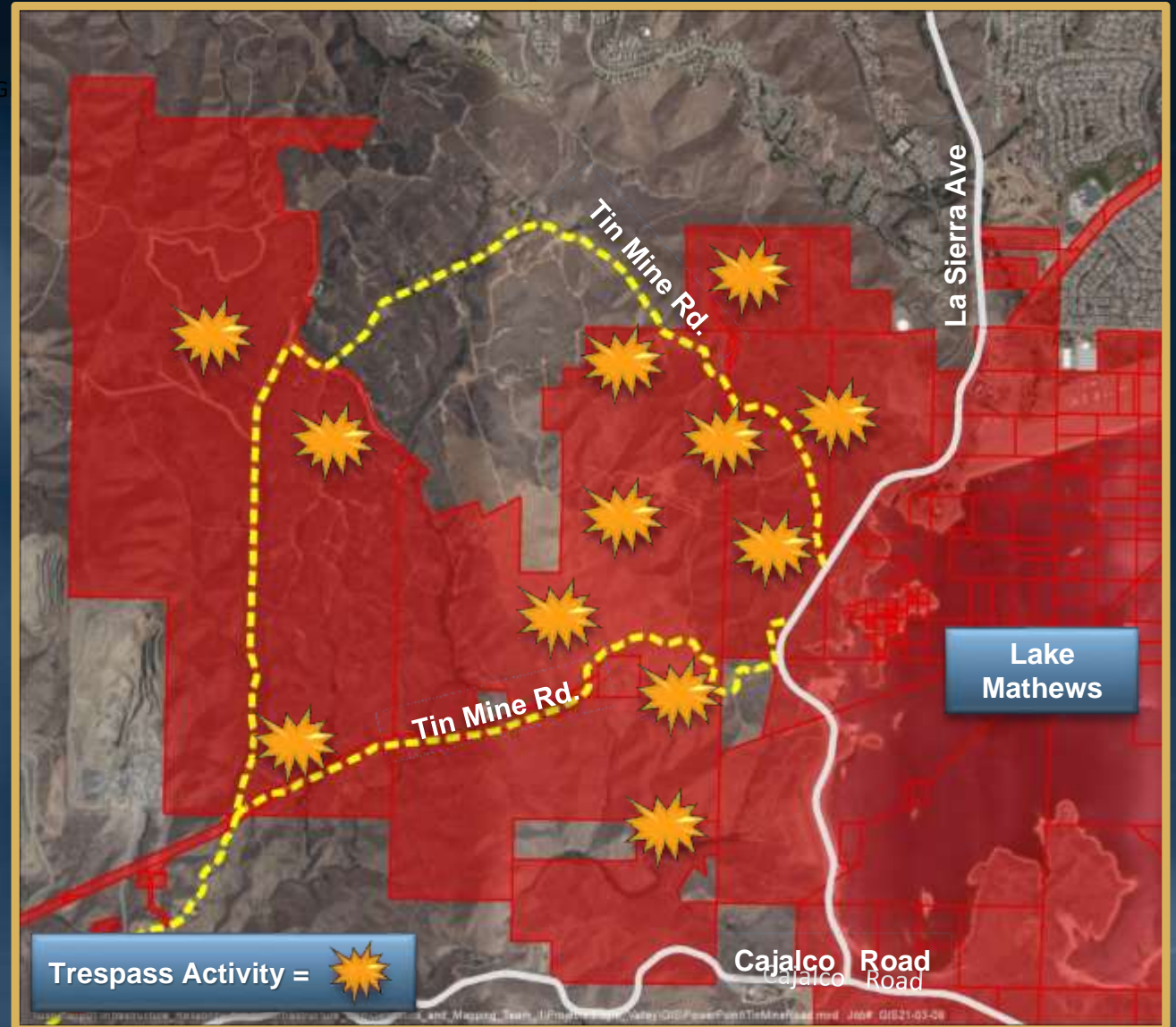


Recent Trespass Activities



Eagle Valley (Lake Mathews Area)

- Approximately 2,400 Acres acquired in 1980's and 90's.
- Potential Future Project Area
- Continued Issues:
 - Trespassing and Fireworks
 - Discharging of Firearms
 - Dumping
 - Off-road Activity



Eagle Valley (Lake Mathews Area)



Eagle Valley (Lake Mathews Area)



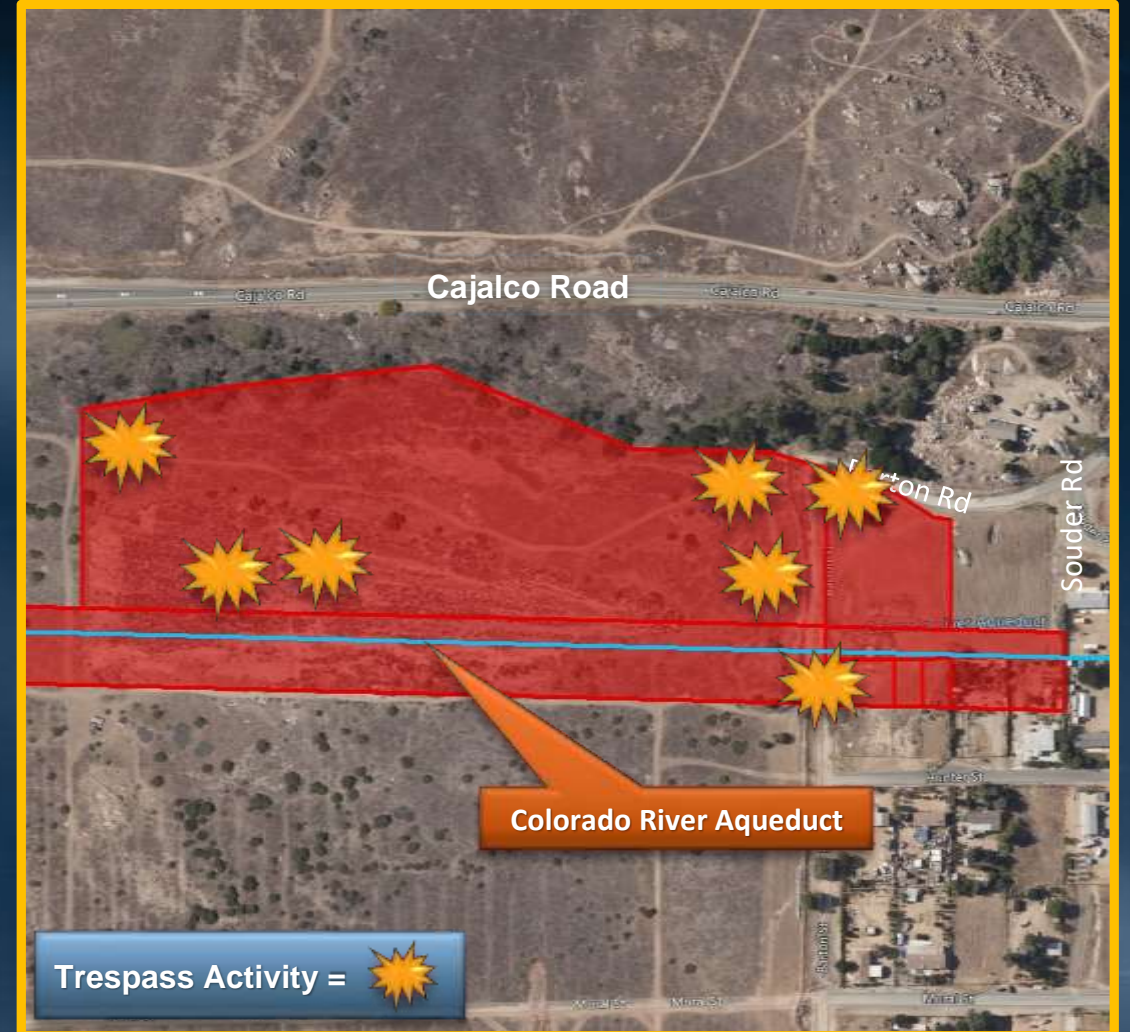
Eagle Valley (Lake Mathews Area)



Val Verde Tunnel Alignment

- 22 Acres acquired for CRA construction purposes
- Approximately 7 miles east of Lake Mathews Facility
- Continued Issues:
 - Transient Activity/Trespassing
 - Theft of Metropolitan Resources
 - Ongoing Transient Activity
 - Dumping Hazardous Materials

LOS ANGELES



SAN DIEGO

Val Verde Tunnel Alignment

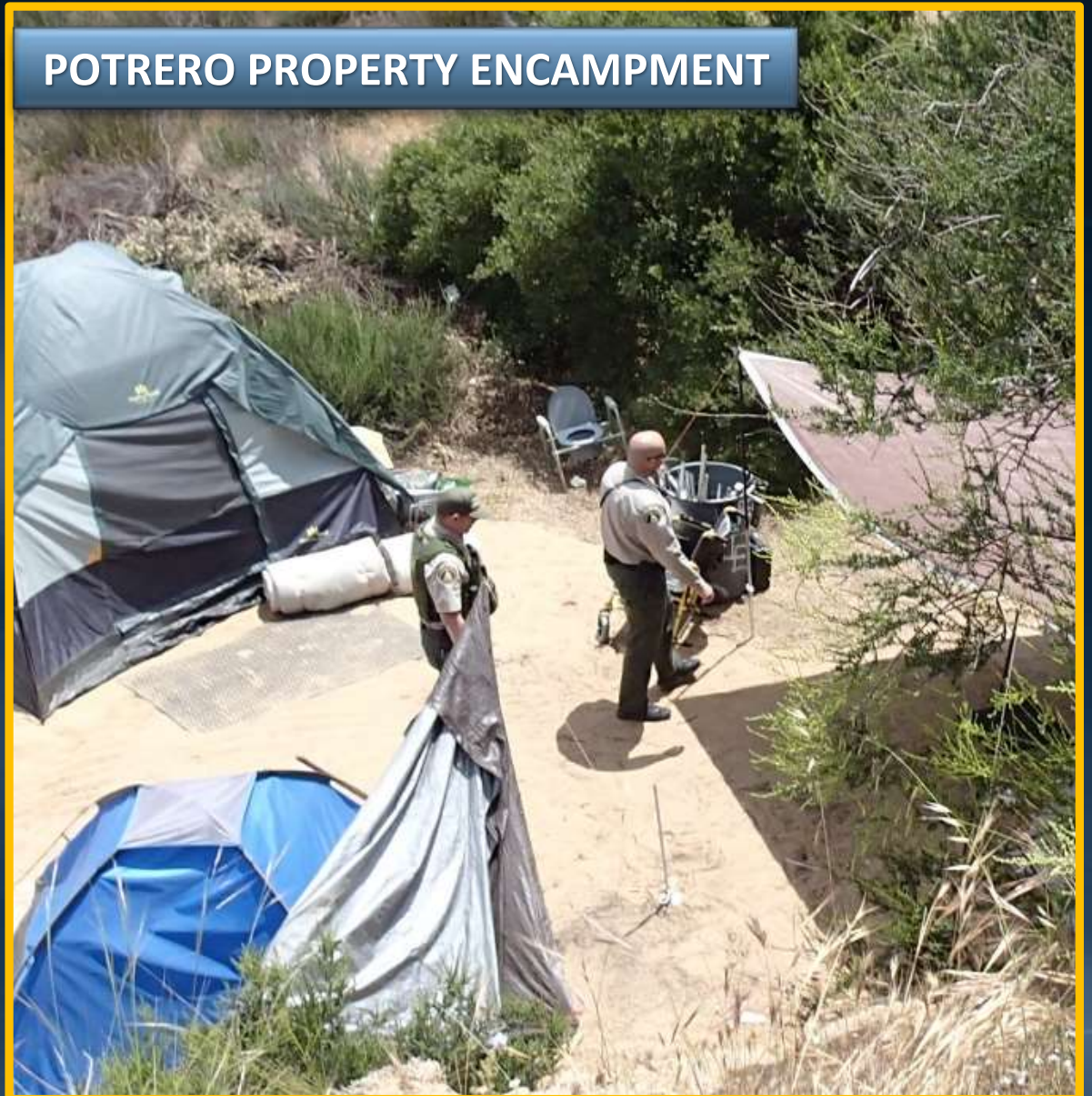


Val Verde Tunnel Alignment



Regional Resources

- Partnering with Local and Regional Resources
 - Coordinate with Local Law Enforcement
 - Notification of Trespassing
 - Offer Resources such as Shelter and Assistance
 - Secure the Property
 - Coordinate Cleanup Efforts
 - Monitor Area



Encroachments and Trespass Activity 2021

Account	Encroachment Plan	Trespass/ Encampments
Labor	\$430,000	\$275,000
Materials & Outside Contract Services	\$25,000	\$195,000
Totals	\$455,000	\$470,000
Total Encroachment/Trespass		\$925,000

