



WEST BASIN

Municipal Water District

Overview of West Basin Municipal Water District

MWD Board Meeting

February 8, 2022

www.westbasin.org



Mission



Provide a **safe** and **reliable**
supply of **high-quality water**
to the communities we serve.

Celebrating 75 Years of Water Reliability (1947-2022)



West Basin was **formed in 1947 to make local water supplies more reliable** through the protection of local groundwater sources and identification of new water sources.

75 years later, the District remains committed to its mission to “provide a **safe** and **reliable** supply of **high-quality water** to the communities we serve.”

Board of Directors



Division I

Harold C. Williams
Immediate Past
President



Division II

Gloria D. Gray
Secretary



Division III

Desi Alvarez
Treasurer



Division IV

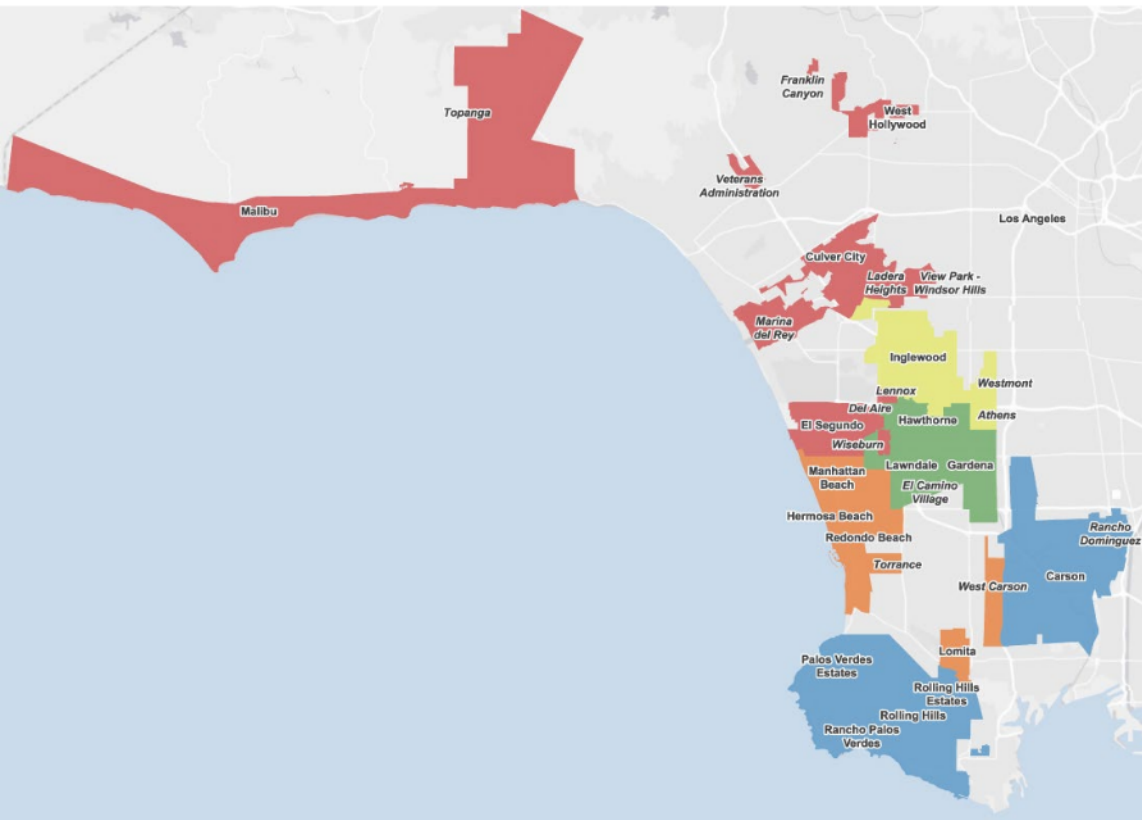
Scott Houston
Vice President



Division V

Donald L. Dear
President

Service Area



Division I

Carson, Palos Verdes Estates, Rancho Palos Verdes, Rolling Hills, Rolling Hills Estates, and unincorporated LA County areas of Rancho Dominguez

Division II

Inglewood, and unincorporated LA County areas of Lennox, South Ladera Heights, West Athens, and Westmont

Division III

Hermosa Beach, Lomita, Manhattan Beach, Redondo Beach, portion of Torrance and West Carson

Division IV

Culver City, El Segundo, Malibu, West Hollywood, and unincorporated LA County areas of Del Aire, Lennox, Marina del Rey, North Ladera Heights, Topanga, View Park - Windsor Hills and Wiseburn

Division V

Gardena, Hawthorne, Lawndale, and unincorporated LA County area of El Camino Village

History of West Basin

1947

Formation of West Basin Municipal Water District

1948

West Basin becomes a member agency of the Metropolitan Water District of Southern California

1991

Agreement between West Basin and Los Angeles to deliver treated sewage from Hyperion Plant to new West Basin recycled water facility in El Segundo

1995

West Basin begins deliveries of recycled water to customers and seawater barrier

1999

Construction completed on Juanita Millender-McDonald Water Recycling Facility

2018

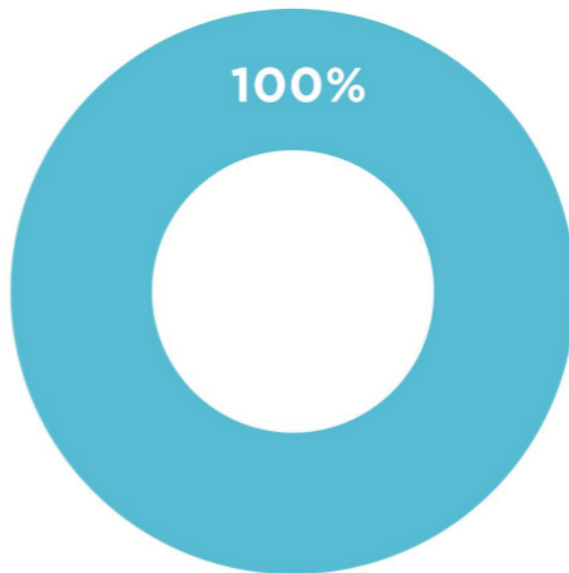
West Basin produces 200 billionth gallon of recycled water



Edward C. Little Water Recycling Facility in 1995

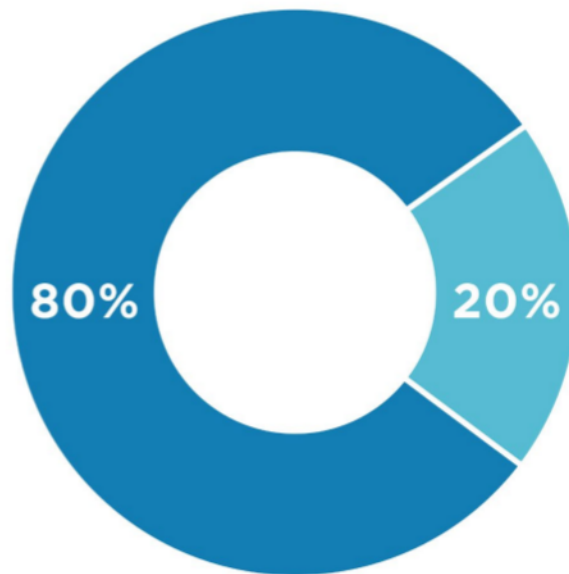
Water Supply Portfolio Pre-1947

■ Groundwater



Water Supply Portfolio 1990

- Imported Water
- Groundwater

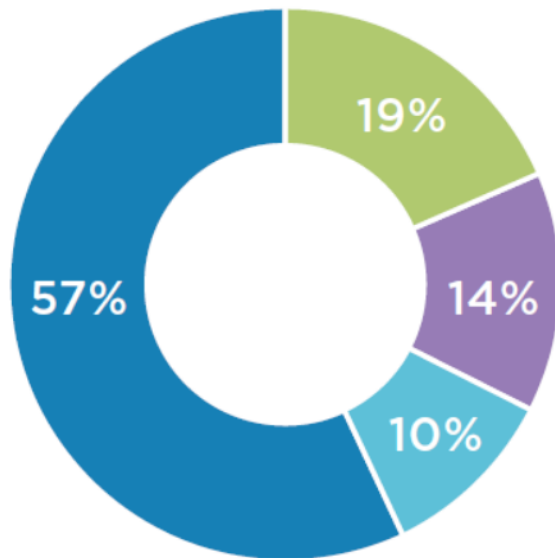


West Basin Water Supply Today

Water Supply Portfolio

Based on 2020 Urban Water Management Plan

- Imported Water
- Conservation
- Recycled Water
- Groundwater

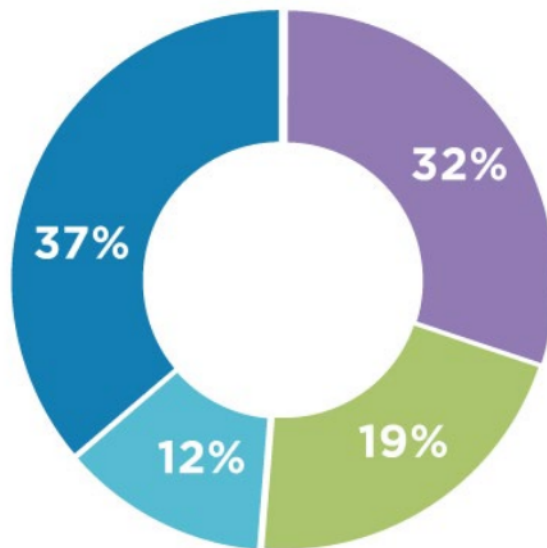


West Basin Water Supply Tomorrow (2045 Projection)

Water Supply Portfolio

Based on 2020 Urban Water Management Plan

- Imported Water
- Recycled Water
- Conservation
- Groundwater



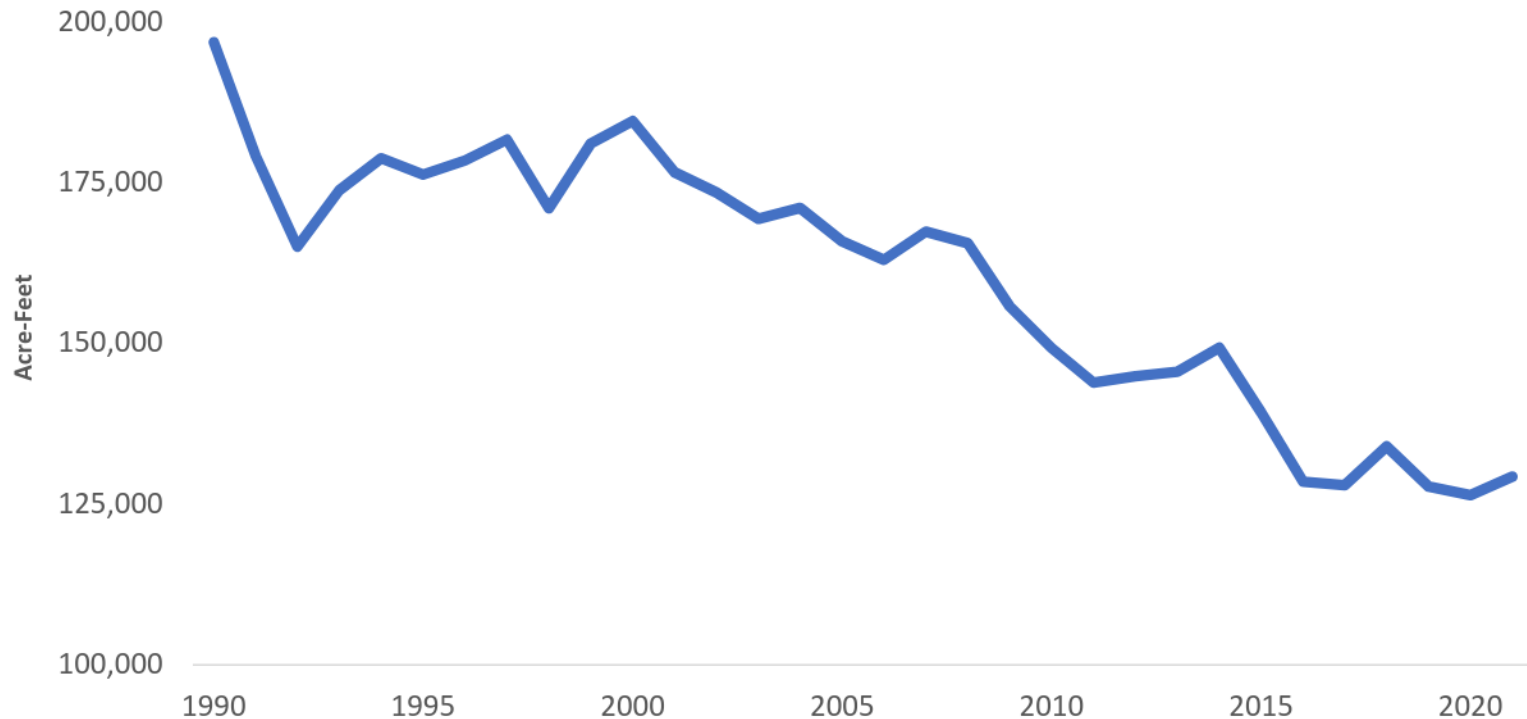
West Basin and the *One Water* Concept



Since 1990, West Basin has embraced the *One Water* concept by investing in its regional recycled water and water efficiency programs

Together, these programs have helped reduce annual potable water demand by ~70,000 Acre-Feet in the last 30 years

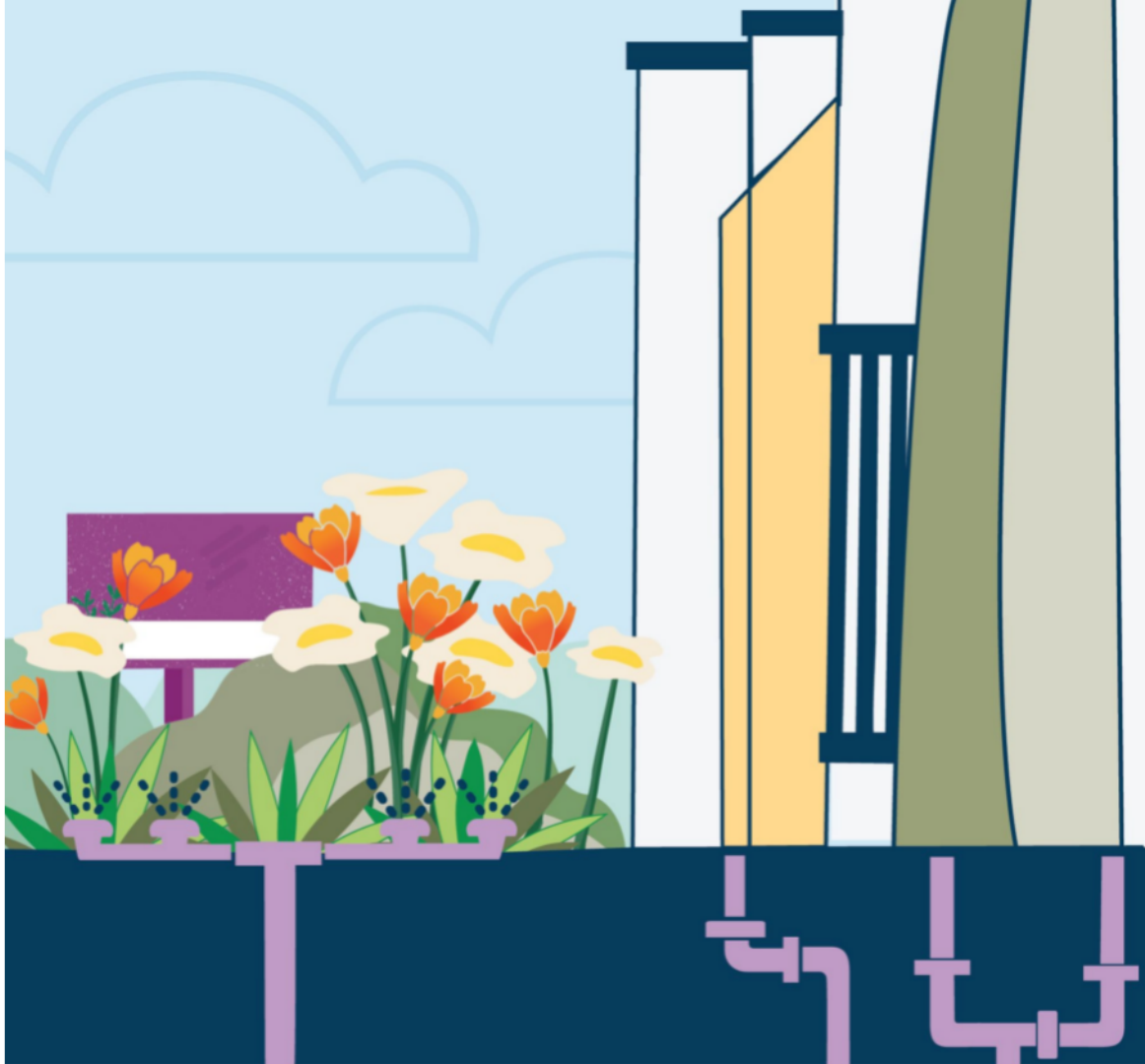
Potable Water Demand in West Basin Service Area





Water Recycling

Diversifying the Water Supply
Portfolio



Water Recycling



*Edward C. Little Water Recycling Facility
El Segundo, Calif.*

- **30-40 million gallons per day** produced and prevented from entering the ocean
- **Five** types of recycled water
- Nearly **250 billion gallons** of recycled water produced since 1995

5 Types of Recycled Water



Irrigation Water

Filtered and disinfected for industrial and irrigation use.



Cooling Tower Water

Processed to remove ammonia for industrial cooling tower use.



Low-Pressure Boiler Feed Water

Membrane filtration and reverse osmosis membranes



High-Pressure Boiler Feed Water

Membrane filtration and passed through reverse osmosis membranes twice



Groundwater Replenishment Water

Membrane filtration, reverse osmosis, and disinfection for use in a barrier against seawater intrusion, augmenting local well water supplies.

Recycled Water Customers



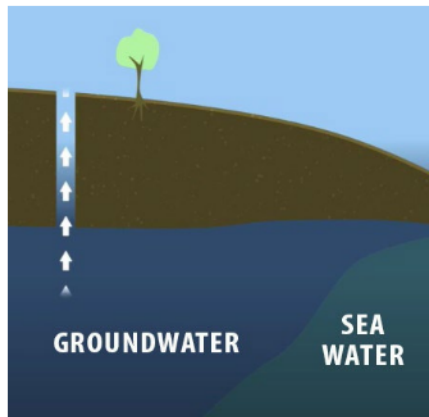
Recycled Water Partnerships



Recycled Water Portfolio



Refineries
50%



Seawater Barrier
37%



Irrigation & Other
13%

Investments in Capacity and Treatment Capabilities



West Basin Pump Station at Hyperion Plant

Expansion of Juanita Millender-McDonald Water Recycling Facility



Future Recycled Water Opportunities

70,000 AFY (62 MGD) of new opportunities



- Tier 1 and Tier 2 markets 2 MGD
- Title 22 Expansions 6 MGD



- Expansion of Barrier System 10 MGD



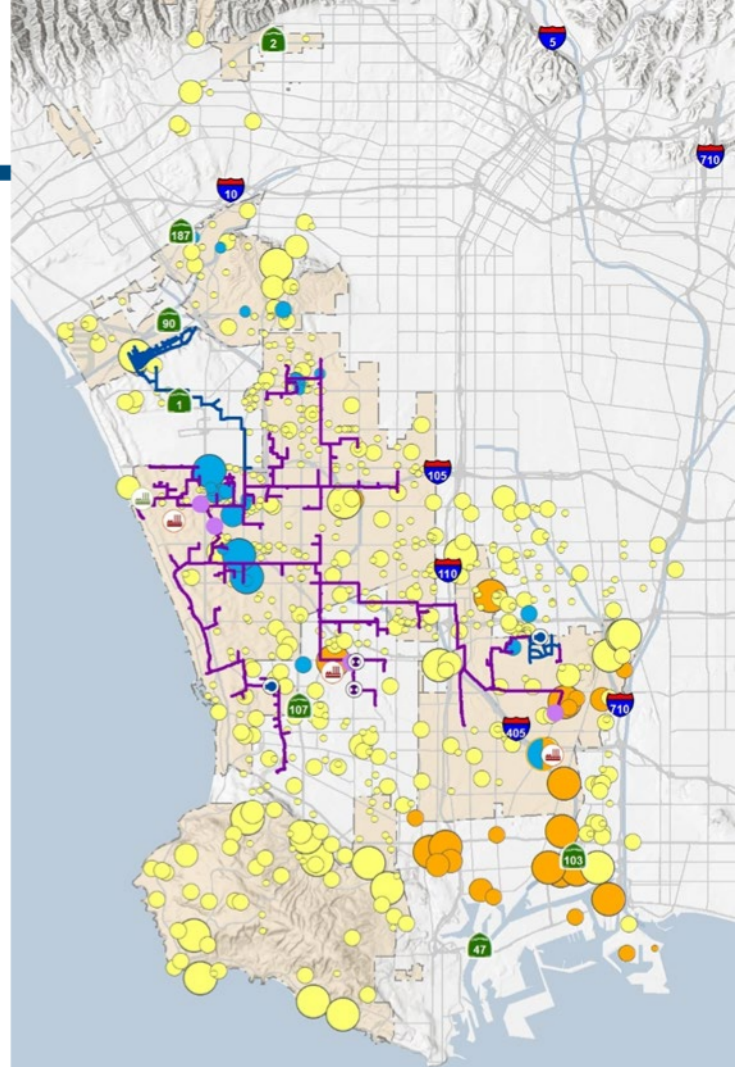
- Refinery Use 12 MGD



- Groundwater Augmentation 22 MGD



- LA Harbor/Long Beach Industrial 10 MGD



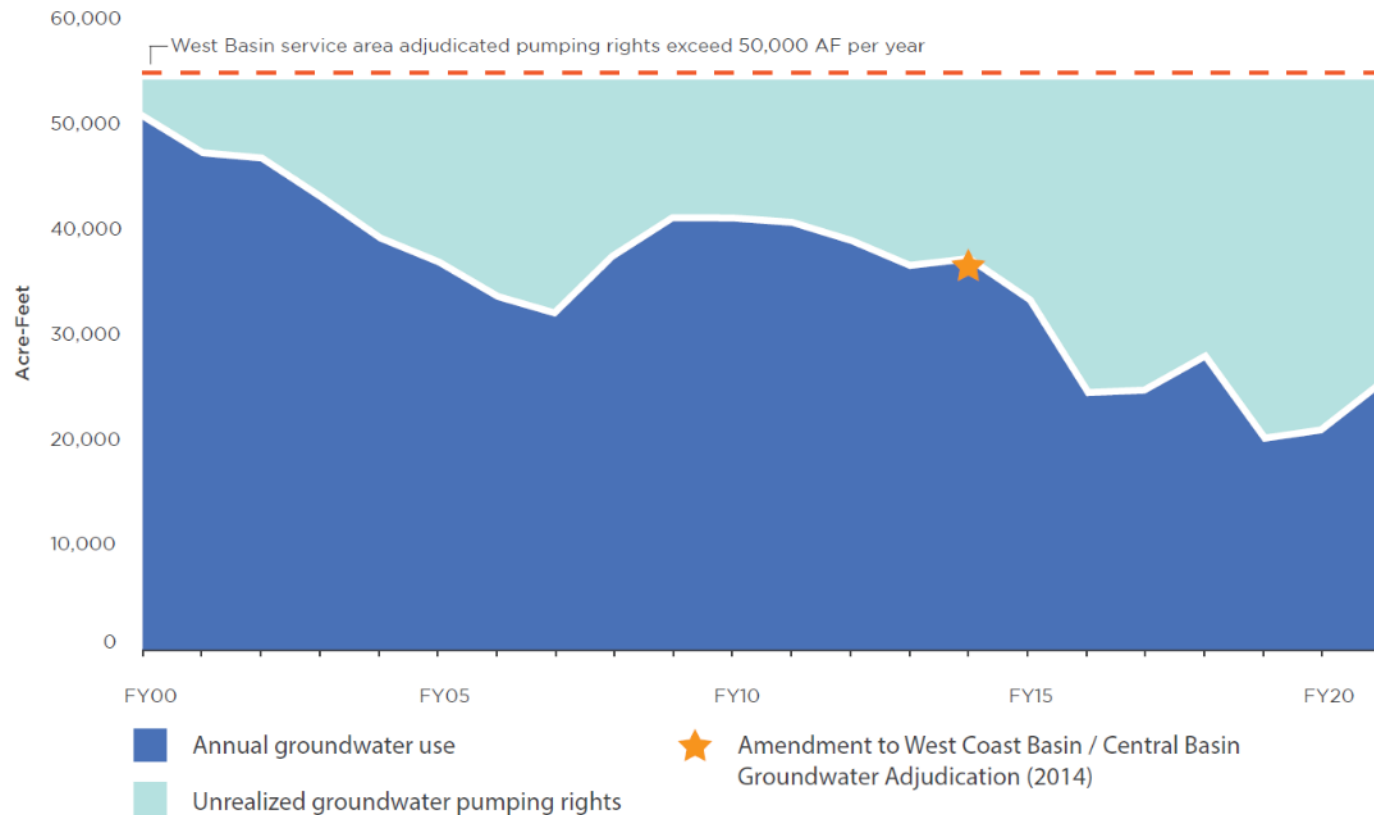


Groundwater

Maximizing Local Resources



West Basin Service Area Groundwater Pumping



Groundwater Partnerships

- Support ongoing efforts to increase pumping volumes in West Coast Basin to historical averages
- Partner with WB retailers, West Basin Water Association, and Water Replenishment District to identify and implement projects that provide dual benefits
 - Use of advanced treated recycled water as source of replenishment and IPR
 - Increased groundwater pumping as local source of sustainable drinking water





Conservation & Water Use Efficiency

A California Way of Life



West Basin Programs that Save Water and Money



Grass Replacement
Rebates



Landscape Classes
& Plant Resources



Free Rain Barrels



Change & Save
Program



Cash for Kitchens
Device Rebates

Grass Replacement +



Grass Replacement

Free Custom Landscape Design, Tree and Bigger Rebate

Act now while funds are still available.
 Visit www.westbasin.org/grass-plus.



FREE
drought-resistant tree



FREE
custom landscape design



UP TO \$25,000
for your project,
\$5 for every square foot of grass replaced

As the drought continues, we need to find creative new ways to save water. That's why West Basin is expanding its water saving program offerings.

Take advantage of these new resources to fix up your home and your neighborhood while helping our communities be SUPER-CALI-FRUGALISTIC!

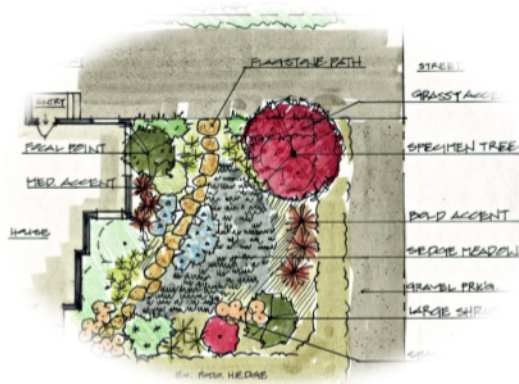
Save Water.
Save California.

Priority neighborhoods in the West Basin service area are eligible for this program. Supplies are limited. Please visit www.westbasin.org/grass-plus for program details and to check your eligibility.

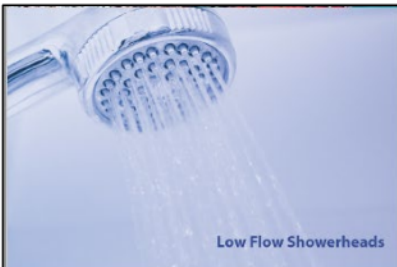
BOARD OF DIRECTORS

HAROLD C. WILLIAMS DIVISION I	GLORIA D. GRAY DIVISION II	DESI ALVAREZ DIVISION III	SCOTT HOUSTON DIVISION IV	DONALD L. BEAR DIVISION V
----------------------------------	-------------------------------	------------------------------	------------------------------	------------------------------

- ✓ Bigger Rebate
- ✓ Free Custom Landscape Design
- ✓ Free Drought-Resistant Tree
- ❖ www.westbasin.org/grass-plus



Change & Save



Low Flow Showerheads



Low Flow Faucet Aerators



High-Efficiency Washer



For a limited time

Get your **FREE**
water-saving
device kit.

**Sign up
today!**

www.westbasin.org/change-save
changeandsave@westbasin.org
(310) 371-4633



Get your **FREE**
water-saving
device kit.



SAVE MONEY



SAVE WATER



SAVE ENERGY



E.J. Caldwell
Interim General Manager

EdwardC@westbasin.org

Connect with us
www.westbasin.org



West Basin



@WestBasin



@WestBasin



West Basin Municipal
Water District