



# West Area Water Supply Reliability Improvements

Engineering and Operations Committee

Item 7-4

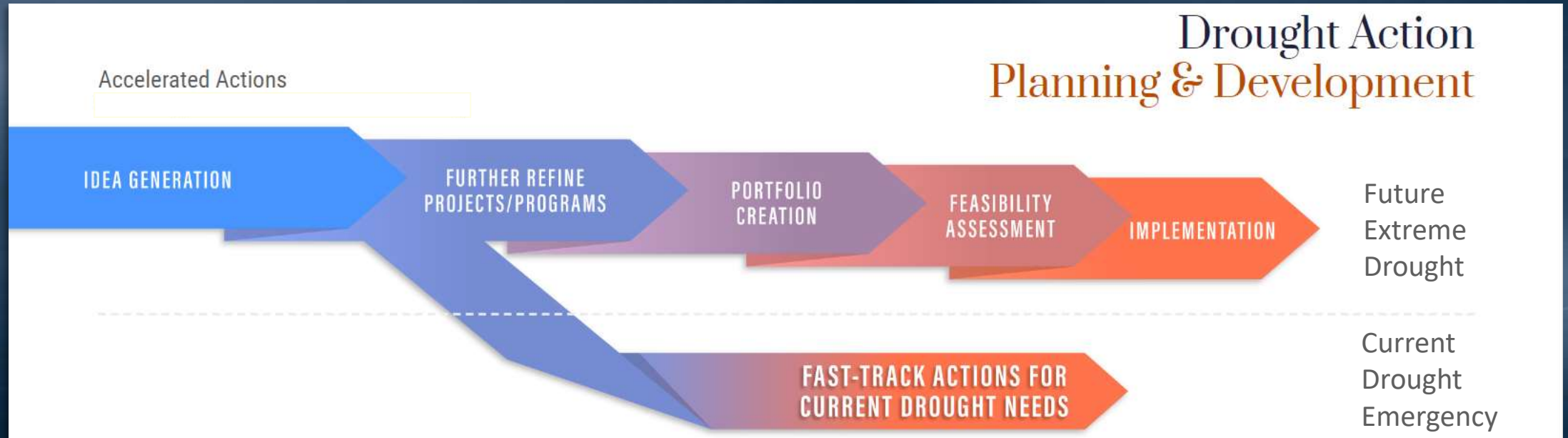
February 7, 2022

# Current Action

- Amend the Capital Investment Plan for fiscal years 2020/2021 and 2021/2022 to include planning and implementation to improve water supply reliability for the west service area
- Authorize an agreement with Carollo Engineers, Inc. in an amount not to exceed \$300,000 for technical investigations

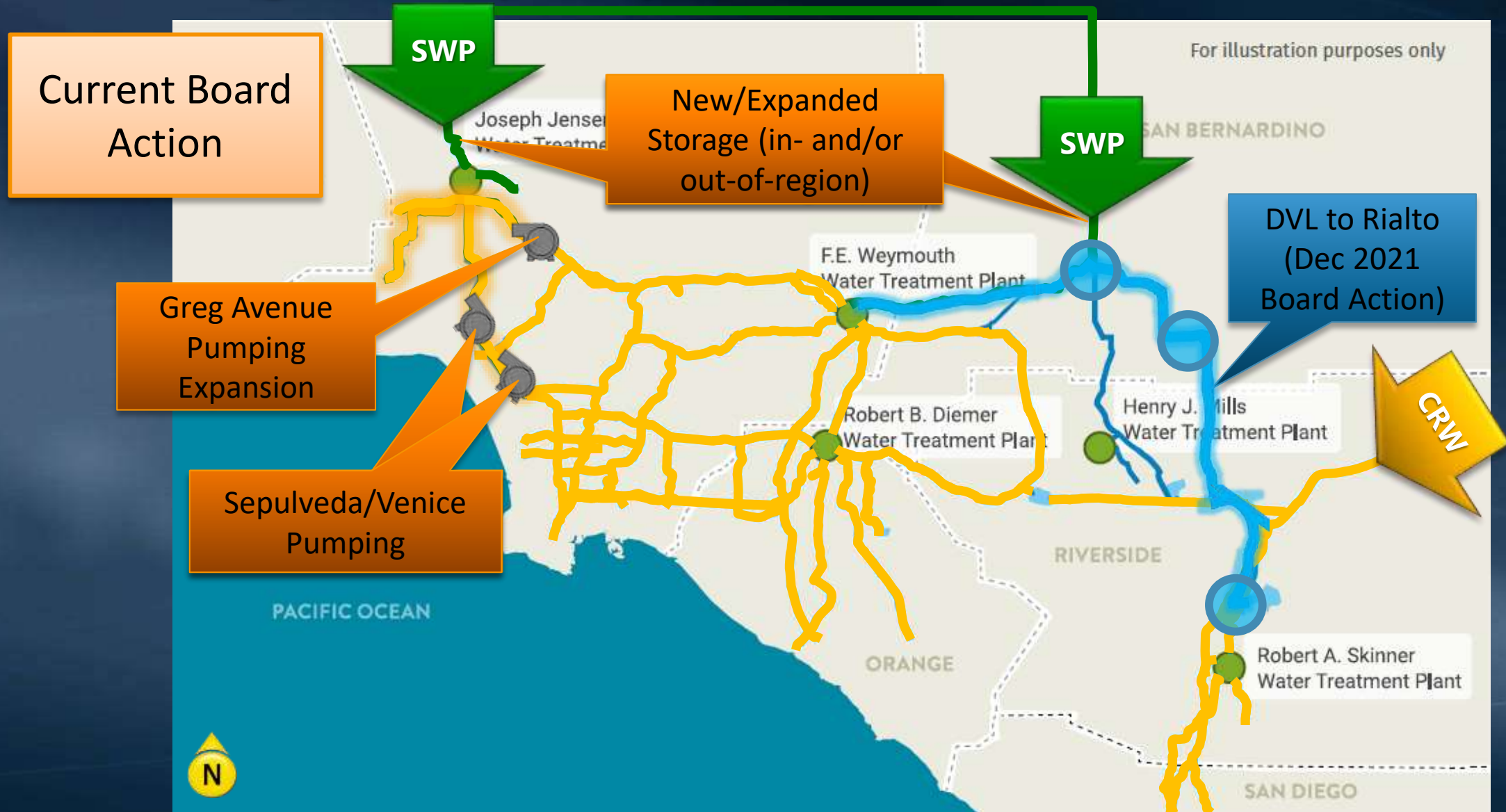
# Background

- Some areas highly dependent on SWP supplies and impacted by extended severe drought on SWP system
  - Including areas served by West Branch
- Metropolitan is committed to resolve this issue
  - Accelerating both near-term actions and planning for mid- and long-term actions



# Drought Action Planning and Development

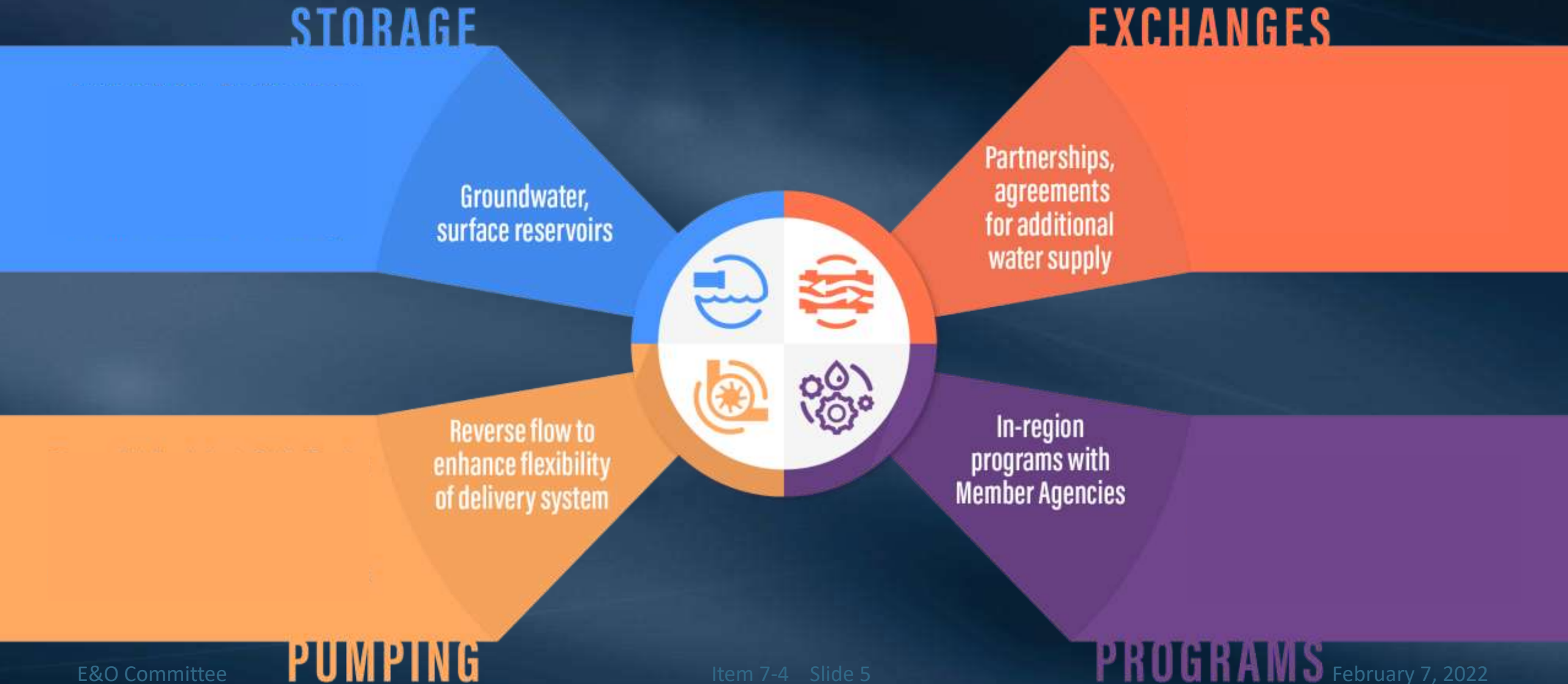
## Evaluating a Variety of Options





# Alternative Supply and Delivery

## Broad Consideration of Alternative Approaches





## Greg Avenue Pump Station Expansion

- Currently provides up to 55 cfs of CRA water to the west valley area
- Reconnaissance-level studies completed for expansion
- More detailed investigations of potential significant infrastructure modifications
  - Parallel piping
  - Increased surge protection
  - Additional booster pump





# New Pump Stations at Venice PCS and Sepulveda PCS

- Deliver Colorado River water to the west valley area
- Supplement Greg Ave Pump Station deliveries
- Reconnaissance-level studies completed for new pump stations
- Pumping 50-100 cfs requires more detailed investigations
  - Potential significant infrastructure modifications
    - Sepulveda Feeder relining north of Venice PCS
    - Surge protection, onsite power availability, connection piping & valves

# Carollo Engineers, Inc.

## New Agreement

- Prequalified under RFP 1215
- Scope of work
  - Conceptual level alternative evaluations
  - Development of project needs criteria
  - Hydraulic analyses including pressure impacts to existing Metropolitan pipelines and mitigation strategies
  - Siting investigations including right-of-way requirements
  - Development of conceptual cost estimates
- SBE participation level: 25%
- NTE amount: \$300,000



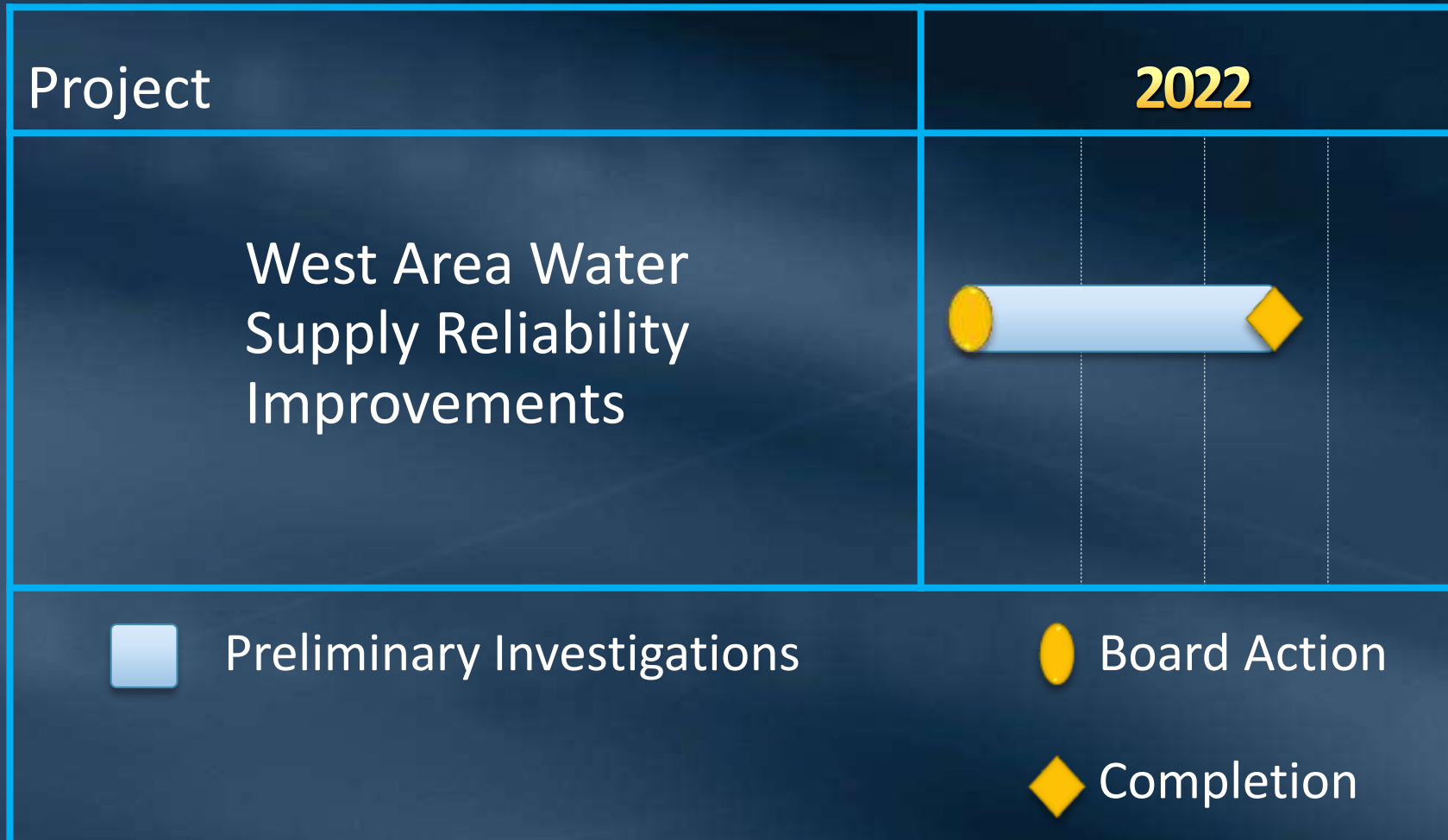
# Metropolitan Scope

- Conduct comprehensive study of supply options for West Area agencies
  - Coordinate with member agencies to establish study parameters
  - Facilitate workshops to collaborate on option development
  - Create portfolios to improve water supply reliability
- Manage feasibility studies of two long-term pumping options
  - Oversee consultant work
  - Provide technical support
  - Communicate progress with member agencies

# Allocation of Funds

Metropolitan Labor	
Preliminary Investigation	\$161,000
Agreement admin, coordination w/ agencies, and project management	140,000
Professional Services	
Carollo Engineers, Inc.	300,000
Remaining Budget	99,000
<hr/>	
Total:	\$700,000

# Project Schedule





# Board Options

- Option #1
  - a. Amend the current CIP to include planning and implementation of infrastructure projects to improve water supply reliability for the western service area; and
  - b. Authorize a new agreement with Carollo Engineers, Inc. in an amount not to exceed \$300,000 for technical investigations.
- Option #2
  - Do not proceed with the project at this time.

# Staff Recommendation

- Option #1

