



# Review of Metropolitan's Achievements in Conservation, Recycling and Groundwater Recovery

Water Planning and Stewardship Committee

Item 1A

December 13, 2021

# Annual Reporting to the California State Legislature

- Show progress in water conservation, recycling and groundwater storage and replenishment measures
  - 2020 Urban Water Management Plan adopted in May 2021
- Annual submittal to California Legislature by Feb 1
- Required by MWD Act Section 130.5, added by statute in 1999 (SB 60)
- Conduct public hearing and invite knowledgeable individuals



# Importance of One Water and the Current Drought

- One Water fosters solutions to water supply reliability
- Severe drought conditions impacting imported water supplies
- Drought declaration by MWD Board November 2021



# Metropolitan's Key Accomplishments in Fiscal Year 2020/2021



Provided \$17 million in Water-Use Efficiency through rebates, landscape and irrigation classes, research, and outreach



Funded \$15 million to support Local Resources Program efforts in recycled water and recovered groundwater production

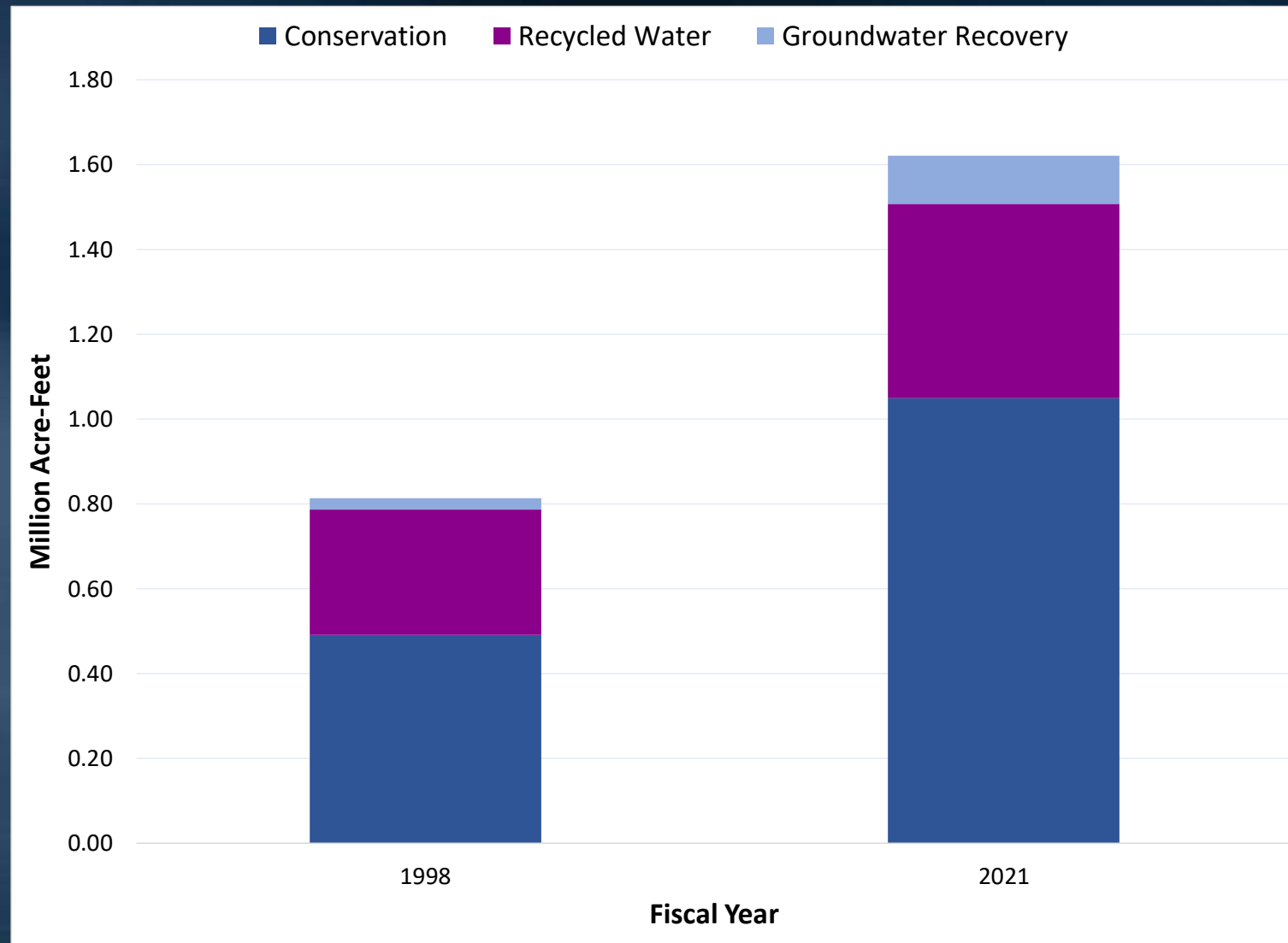


Improved access to Metropolitan rebate programs specifically for underserved communities



Funded and monitored studies and habitat restoration projects in the Delta Watershed and along the Lower Colorado River

# Metropolitan's Achievements: 1998 vs. 2021



# Metropolitan's Cumulative Investment

	Dollars Invested	Acre-Feet
Conservation	\$840 M	3.48 MAF
LRP Recycling	\$528 M	3.03 MAF
LRP Groundwater Recovery	\$181 M	1.10 MAF
<b>Total</b>	<b>\$1.5 B</b>	<b>7.61 MAF</b>

Conjunctive Use Program	0.35 MAF
Groundwater Replenishment	4.18 MAF

# Conservation

# Metropolitan's Suite of Conservation Offerings

- Incentives available for residential, and commercial, industrial & institutional (CII) consumers
- Rebates for indoor & outdoor devices and turf replacement
- Performance-based incentives for larger customized projects
- Partnerships with energy utilities to extend reach
- Classes and other resources to educate consumers on how to remove/replace turf
- Workshops and certification trainings for landscape professionals



# Achievements in Conservation



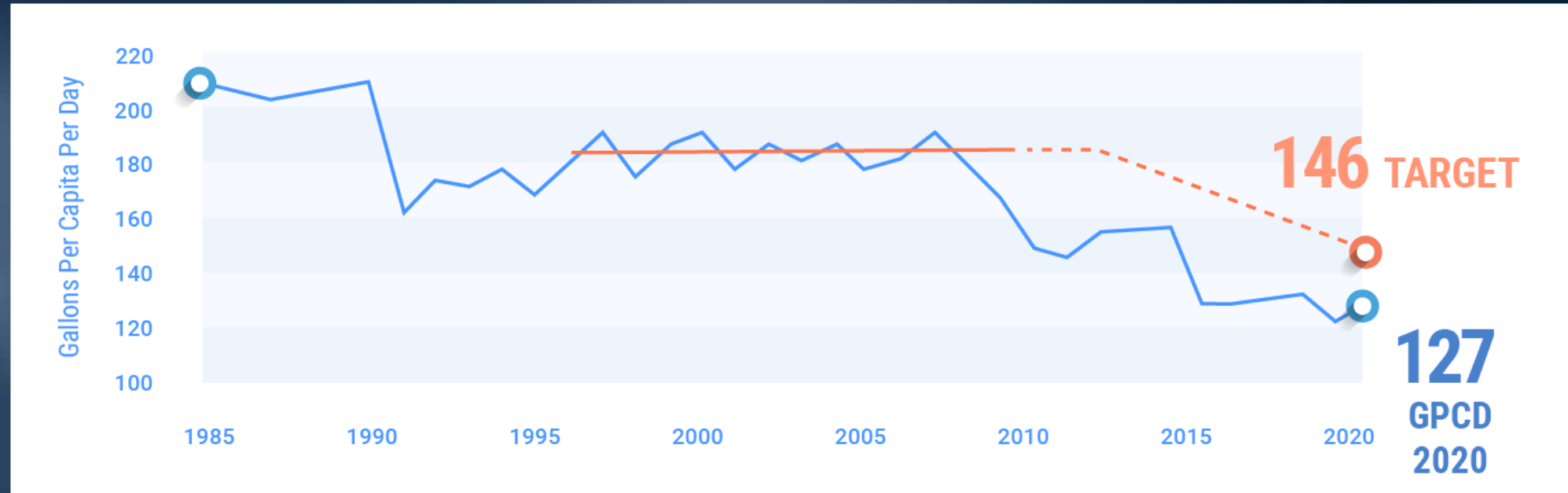
**Activity:**  
**32,286**  
applications  
for rebate  
funding

**Investment:**  
**\$17 M**

**Savings:**  
**207 TAF**  
from existing  
and new  
rebates

# Region Achieved 20x2020 Target

- Water Conservation Act of 2009 set targets for a 20% statewide reduction in urban per capita potable water use by 2020



# Local Resources

# Local Resources Program

Provides incentives for Metropolitan's member agencies to develop new local projects to increase water supply reliability in the region



Recycled Water  
(1982)



Groundwater Recovery  
(1991)

# Achievements in Local Resources

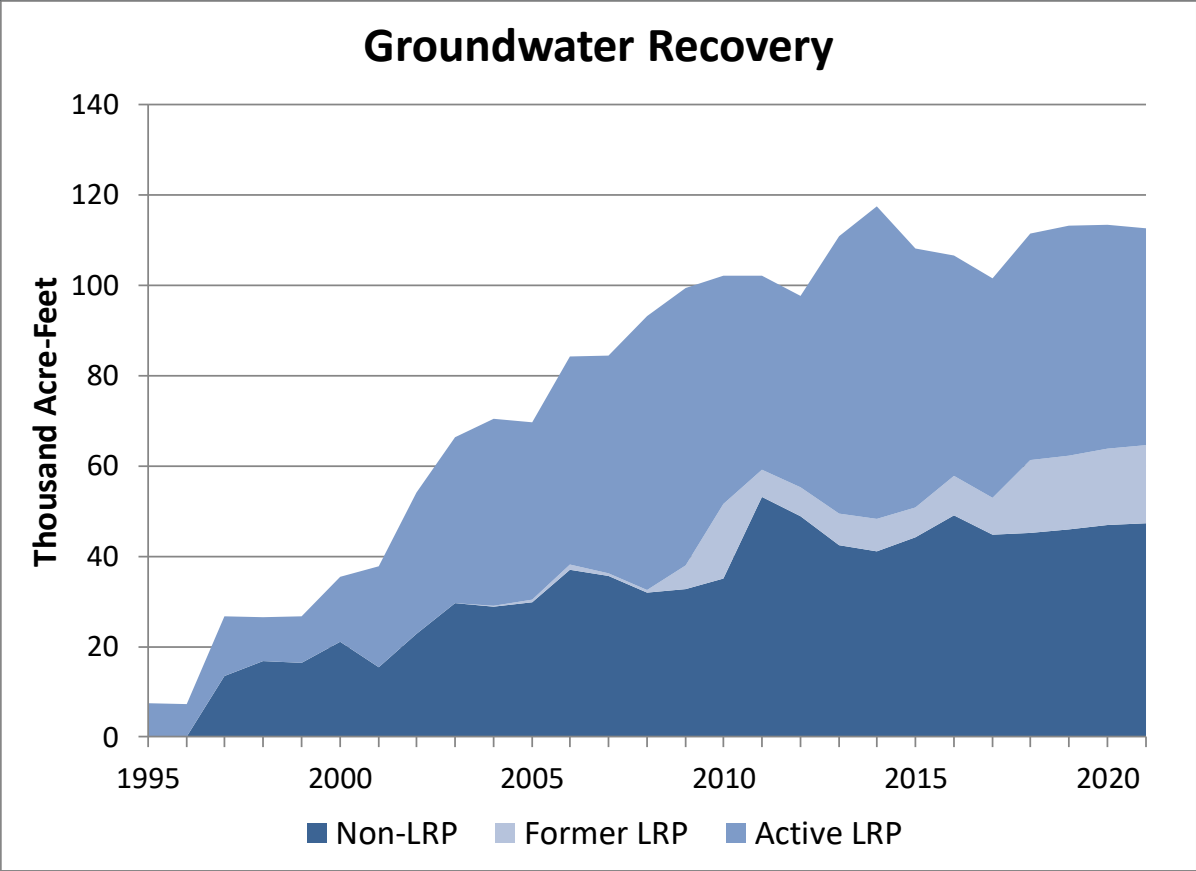
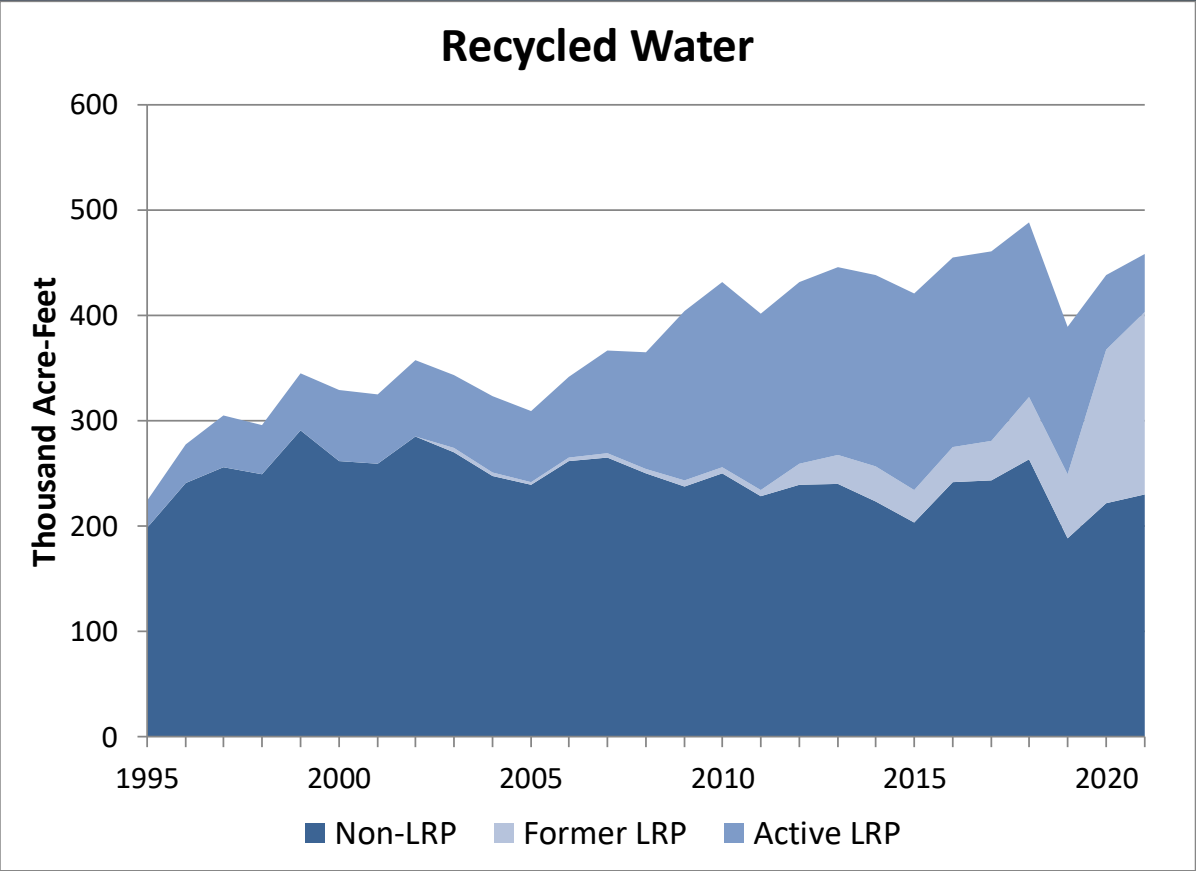


**Activity:**  
**116 LRP  
Projects**

**Investment:**  
**\$15 M**

**Produced:**  
**103 TAF**

# LRP Drives Growth in Recycled Water and Groundwater



# Additional Investments in Recycled Water

## Regional Recycled Water Program

- Funding agreement executed by SNWA and MWD
- MWD Board moved forward with environmental planning phase



## On-Site Retrofit Program

- Funding to 436 sites
- 12,700 acre-feet savings of potable water converted to recycled water



# Groundwater Recharge

# Achievements in Groundwater Recharge



**FY 20/21  
Groundwater Recharge  
Highlights**

**Imported Water  
Delivered for  
Recharge:  
103 TAF**

*Note: The values above reflect the imported supplies for groundwater recharge and do not include groundwater for recycled water projects.*

# Groundwater Recharge Programs Overview

## Conjunctive Use Program

- 9 conjunctive use accounts with up to 71,000 AFY extraction capability
- \$27 M cumulative capital investment
- \$45 M from Prop 13 grant funds administered



## Cyclic Program

- Aids in management of surplus imported water
- Deferred payment over period of up to five years
- Can manage up to 525,000 AF



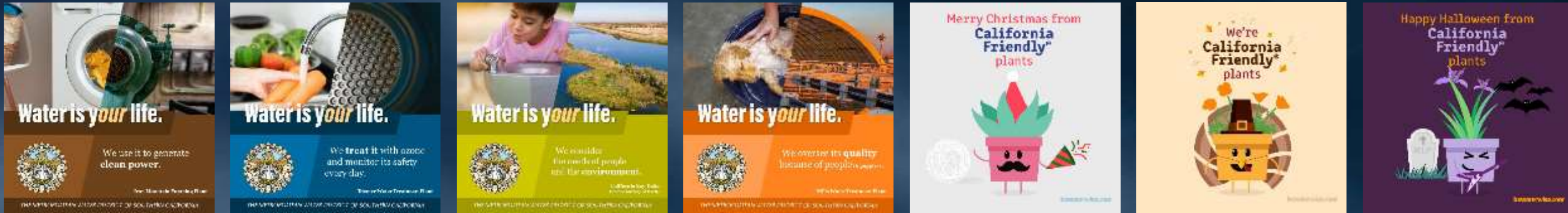
# One Water Approach Strengthens Water Supply Reliability

- Without conservation, the effects of drought would be swifter and more severe
  - **Less water used translates into more water stored**
- Local resources projects reduce Metropolitan's dependence on imported supplies
- Groundwater recharge allows for healthy and sustainable use of our groundwater basins
- Metropolitan continues to promote innovative and sustainable approaches to the region's ongoing challenges

# Other Metropolitan Initiatives

# Communications and Outreach

- Advertising and Outreach Campaigns



- Media

- 70+ interviews on major TV, radio, print and digital media outlets
- General Manager and Board Chairwoman blogs, op-eds, podcasts
- Award winning redesigned website

# Communications and Outreach

- Community Outreach
  - Active memberships and partnerships with local business and community organizations
  - Virtual inspection trips of MWD facilities
- Education Programs
  - Water-focused curriculum, grants, and outreach programs
  - 100+ events and engaged with ~78,000 students, teachers, parents, and participants



# Other FY 2020/21 Initiative Highlights

## Future Supply Actions

- Program funds studies addressing groundwater, recycled water, stormwater and seawater desalination supply challenges
- 2018 studies expected to be completed in 2021

	2013 FSA Member Agency Studies		2018 FSA Member Agency Studies		2018 WRF Potable Reuse Studies	
	Studies	Funding	Studies	Funding	Studies	Funding
Groundwater	4	\$900,000	3	\$661,000		
Recycled Water	5	\$810,000	5	\$1,265,000	7	\$975,000
Stormwater	2	\$814,000	4	\$865,000		
Seawater Desalination	2	\$325,000	2	\$365,000		
Total Funding	13	\$2,939,000	14	\$3,156,000	7	\$975,000

## Stormwater Pilot Programs

- Pilots encourage development and monitoring of new and existing stormwater projects
- Five projects approved by Board
  - **Over \$2.8 million in funding by Metropolitan**



# Local Watershed Initiative Highlights

- Southern California Salinity Coalition
  - Implementing WRF study to assess benefits of blending low-salinity seawater desalination supplies into existing distribution systems in San Diego County
  - Funding new member studies, including a feasibility study of a potential brine-line in the Los Angeles basin
- Council for Watershed Health
  - Metropolitan and the council jointly presented at the California Water Efficiency Partnership annual Peer-to-Peer Event



# Delta Watershed Initiatives Highlights

- California EcoRestore Habitat Restoration
  - As part of Tule Red Tidal Restoration Project, found state-listed juvenile longfin smelt inside and outside tidal wetland restoration site
- Municipal Water Quality Investigations Program
  - Conducted routine water quality monitoring for drinking water quality constituents throughout the Delta
  - Continued monitoring study to evaluate the degradation of an herbicide used in Clifton Court Forebay



# Colorado Watershed Initiatives Highlights

- Lower Colorado River Multi-Species Conservation Program
  - As of FY 2020/21, approximately 6,500 acres of habitat have been created or restored
- Colorado River Basin Salinity Control Forum
  - Forum completed the 2020 Review of Water Quality Standards for Salinity in the Colorado River System



# Next Steps

- Review and incorporate comments received today
- Finalize Report – January 2022
- Submit to Legislature – February 1, 2022

