



Finance, Affordability, Asset Management and  
Efficiency Committee

# Southern California Edison Easement Agreement

Item 7-5

August 19, 2025

## Item 7-5 Overview of the Easement Agreement

### Subject

Review and consider the California Public Utilities Commission Final Subsequent Environmental Impact Report, adopt the Commission's findings, and authorize the General Manager to grant a permanent easement to Southern California Edison for overhead electrical transmission purposes on Metropolitan fee-owned property in the County of Riverside

### Purpose

Establish rights to construct and operate energy infrastructure

# Distribution System Map



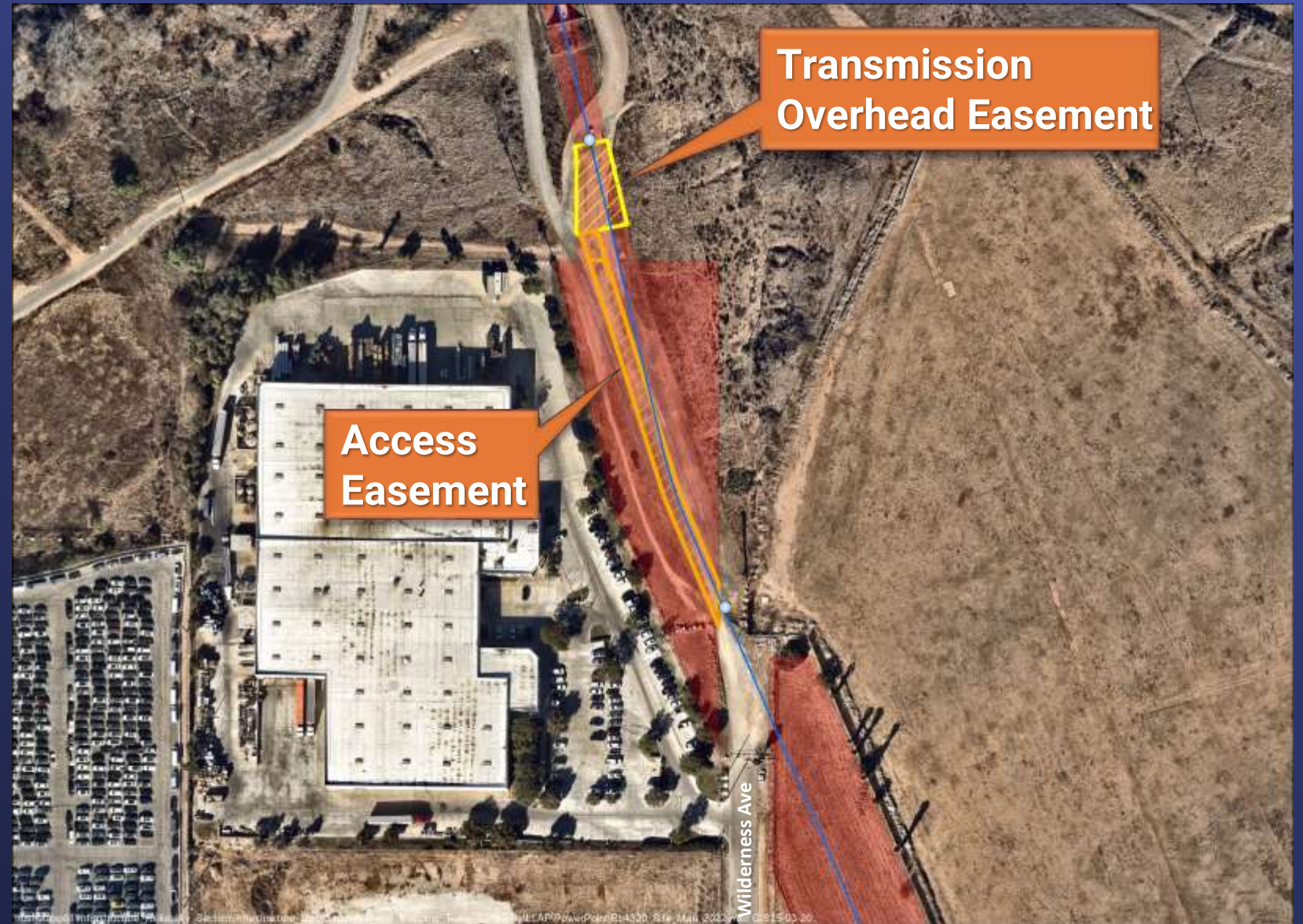


# General Location Map





# Site Map



## Key Provisions

- Subject to Metropolitan's paramount rights reservation
- Operation, maintenance, and replacement of overhead electrical transmission line rights
- All plans shall be approved by Metropolitan
- SCE shall maintain the easement area
- The easement area will be 0.32 acres
- Metropolitan will receive \$12,200 for easement

## Board Options

### Option No. 1

Review and consider the California Public Utilities Commission Final Subsequent Environmental Impact Report, adopt the Commission's findings, and authorize the General Manager to grant a permanent easement to Southern California Edison for overhead electrical transmission purposes on Metropolitan fee-owned property in the County of Riverside and identified as Assessor Parcel Number 189-110-011 and 189-120-005.

### Option No. 2

Do not approve the permanent easement.

# Board Options

## Staff Recommendation

- Option No. 1



