



Finance, Affordability, Asset Management, and
Efficiency Committee

Professional Services Agreement for Environmental & Greenhouse Gas Monitoring & Reporting

Item 8-2

August 19, 2025

Item 8-2 Increase Agreement

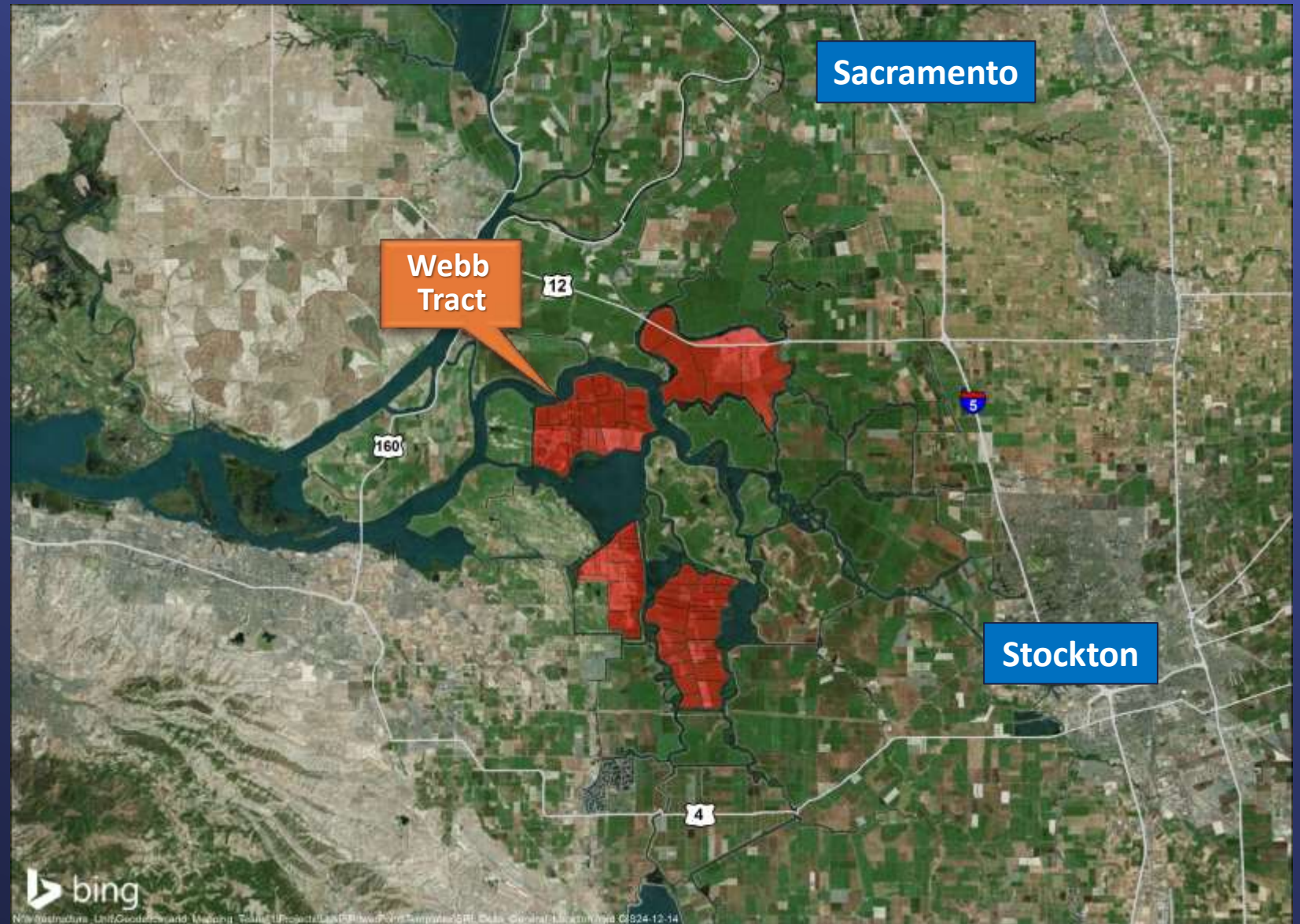
Subject

- Authorize an increase of \$300,000 to an agreement with HydroFocus, Inc. for a new not-to-exceed total amount of \$455,000 for environmental monitoring services on Webb Tract island

Purpose

- Increase to the existing agreement will support environmental and greenhouse gas emissions monitoring, reporting, and the establishment of carbon credits that can be sold to generate revenue for the island

General Location Map



Background

- Farming practices have resulted in subsidence and peat loss on Metropolitan islands
- Metropolitan awarded a \$20.9M grant from Delta Conservancy to fund rice conversion & wetland restoration project on Webb Tract



Rice Project

- RFP - Feb. 2025
- Lease award –August 2025
- Land leveling to begin Fall 2025
- Benefits
 - ✓ Halt and/or reverse subsidence
 - ✓ Reduce GHG emissions
 - ✓ Explore food web benefits



Wetland Project

- Currently in final design
- Construct ~2,200 acres of wetland
- Create and support vital habitat for reptiles, birds, and other species
- Additional Benefits:
 - ✓ Halt and/or reverse subsidence
 - ✓ Reduce GHG emissions
 - ✓ Explore food web benefits
 - ✓ Explore paludiculture opportunities



Delta Conservancy Grant

Webb Tract Grant

- Webb Tract Multi-Benefit, Mosaic Landscape Grant Proposal (\$20.9m) funds:
 - Wetland design and, if approved, construction
 - Subsidy to rice farmer to offset land-levelling & infrastructure improvements
 - GHG monitoring and reporting
 - Environmental monitoring & accretion rates

Carbon Market Activity

- Protocol published in 2017
- Emissions reductions verified on Sherman and Twitchell Islands - wetlands
 - In 2020, 52,106 tons of carbon dioxide equivalents
- Staten Island - rice
 - In 2025, 12,010 tons of carbon dioxide equivalents

Deverel et al. 2017, <https://acrcarbon.org/methodology/restoration-of-california-deltaic-and-coastal-wetlands/>

GHG Measurements on Webb

- Eddy covariance stations installed 2024
 - Carbon dioxide flux
 - Methane flux
 - Nitrous oxide flux
 - Depth to groundwater
 - Temperature
 - Wind direction/speed



Estimated Greenhouse Gas Emissions Reductions

Type	Baseline emissions (tCO2e/yr)	Project emissions (tCO2e/yr)	Avg annual reductions (tCO2e/yr)
Wetland (1,926 ac)	24,000	2,600	-21,400
Rice (1,582 ac)	19,600	11,900	-7,700
Total (Credits)	43,600	14,500	-29,100
Range (\$\$)			\$400-\$900K

Increase Professional Services Agreement

Continue Environmental & Greenhouse Gas Monitoring

- Monitor greenhouse gas emission reductions
- Generate revenue from carbon credits
- Monitor subsidence reversal, accretion rates, & other environmental benefits

Board Options

- Option #1

Authorize an increase of \$300,000 to an existing agreement with HydroFocus, Inc. for a new not-to-exceed total amount of \$455,000 for environmental monitoring services.

- Option #2

Do not authorize an increase to two agreements at this time.

Staff Recommendation

- Option #1

