



Engineering, Operations, & Technology Committee

Management Announcements and Highlights

Item 7a

August 18, 2025

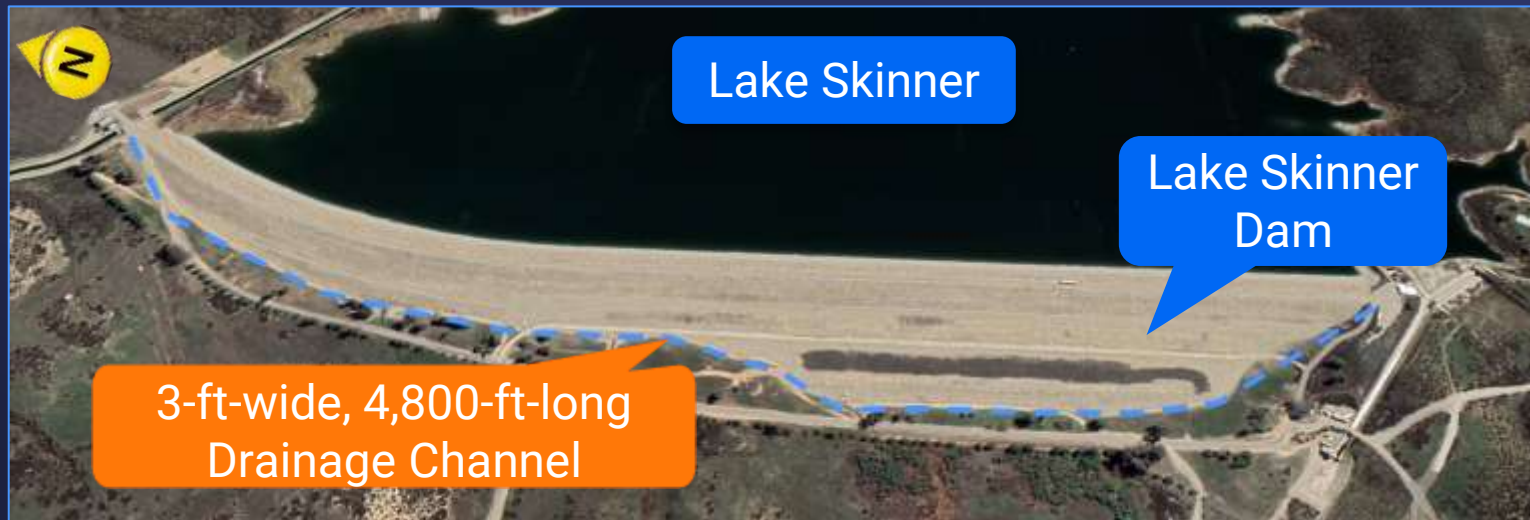
Engineering Services

Lake Skinner Dam Perimeter Drainage Improvements - Background

- Proactive measure to:
 - Improve stormwater drainage and erosion protection around the toe of the dam
 - Reduce future maintenance requirements
 - Continue to comply with DSOD Requirements



Excavation for new V-ditch



Lake Skinner Dam V-ditch Alignment



V-Ditch Concrete Placement

Lake Skinner Dam Perimeter Drainage Improvements Completed Ahead of Schedule

- Construction Contract
 - Board awarded December 2024
 - Complete July 2025
 - Contract Amount – \$588,000



V-Ditch near Left Abutment
Looking Downstream



V-Ditch near Left Abutment
Looking Upstream

Water System Operations

Managing State Water Project Supplies

Current Operational Conditions



Lake Mathews

- 2025 SWP Allocation at 50%
- CRA at 7 pump flow
- Deliveries to DWCV at 700 cfs
- Deliveries to Cyclic programs
- SWP blend targets are 40% at Weymouth, Diemer, and Skinner
- July 2025 deliveries were 126 TAF, which is 6 TAF higher than July 2024

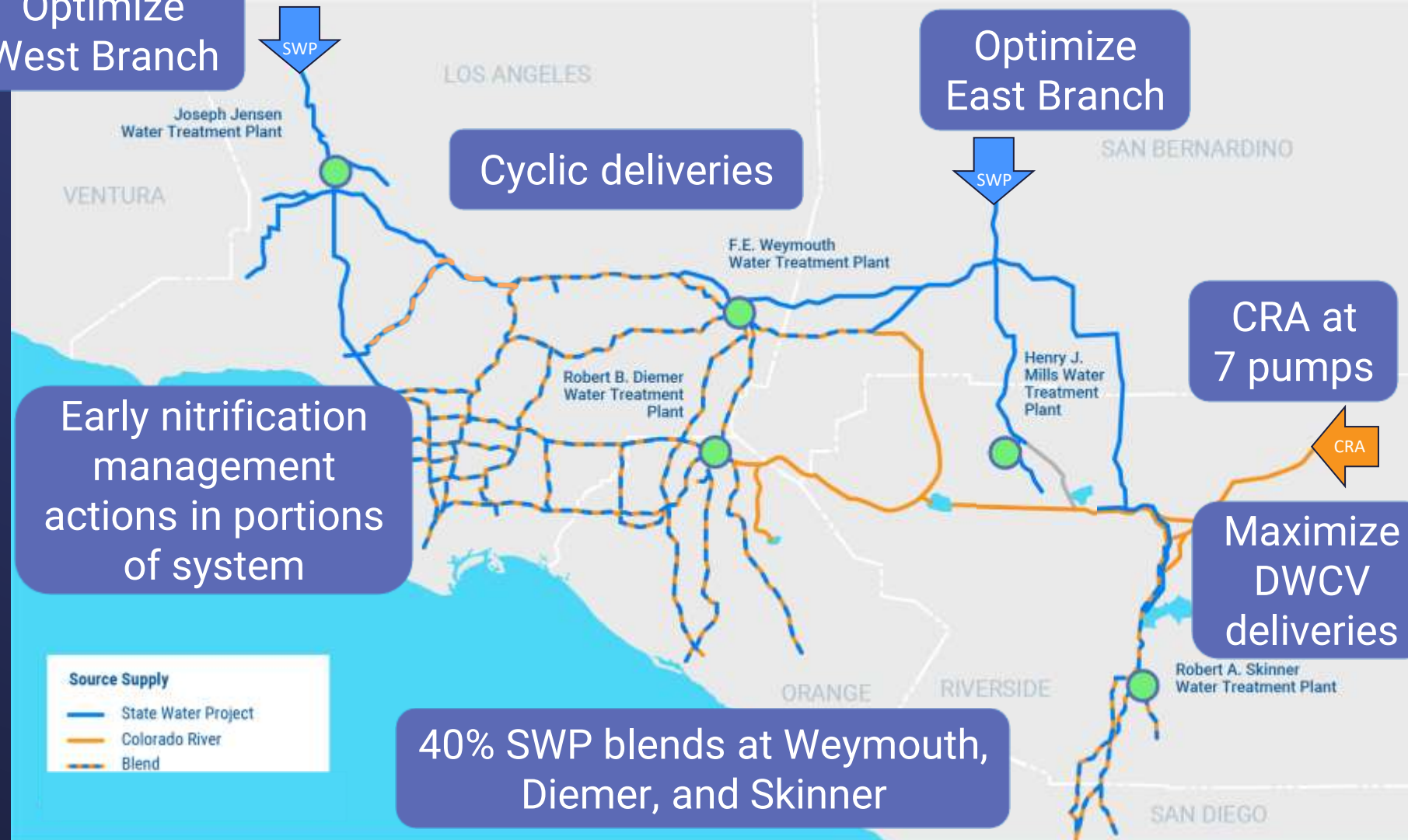
Managing State Water Project Supplies

August 2025
Operations

*Balancing SWP supplies
with CRW supplies*

*Planning increased
Carryover storage to
support SWP
Dependent Area*

Optimize
West Branch



Lake Mathews shutdown and Iron Mountain work successfully completed

Ensuring Continued Infrastructure Reliability



Pumping into the Lake Mathews Forebay



Setup of Pumping Equipment



Divers mobilizing for Lake Mathews Tower 1 dives



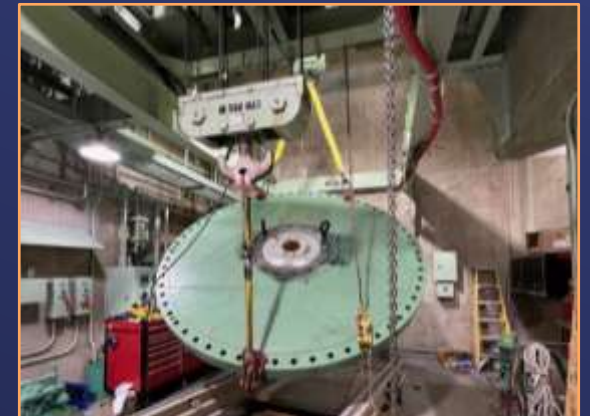
Dive for Lake Mathews Tower 1



Iron Mt Pumping Plant



Staff working on repairs at Iron Mt Pumping Plant



Repaired Discharge Valve

Lake Mathews Tower Shutdown



Information Technology

Information Technology Disaster Recovery Exercise

- On **July 12, 2025**, the Metropolitan Water District's (MWD) IT department successfully completed its annual disaster recovery exercise of business continuity applications within our Oracle Cloud tenancy.
- This critical test involved a comprehensive business continuity switchover of critical business applications and their dependencies.
- Operations seamlessly transitioned from the primary Oracle Cloud Infrastructure (OCI) tenancy in Phoenix (OCI PHX) to the secondary OCI tenancy in Ashburn (OCI ASH), while dependent applications in the Nevada (NV) data center were simultaneously moved to the El Segundo (ES) data center.
- All in-scope applications ran effectively from their secondary locations for one business week before being successfully switched back to their primary environments on **July 18, 2025**.
- This exercise validated MWD's IT resiliency capabilities and reinforced the effectiveness of our disaster recovery protocols, demonstrating our preparedness for potential disruptions.

