



One Water and Stewardship Committee

# Chief Sustainability, Resilience and Innovation Officer's Report

Item 8d

August 14, 2023

# Sustainability Resilience & Innovation Office



SUSTAINABILITY  
RESILIENCE  
INNOVATION

The mission of the Sustainability, Resilience, and Innovation Office is to empower Metropolitan to deliver its core mission by inspiring and implementing solutions that benefit people, nature, and the climate.

# Sustainability Resilience & Innovation Office



## Initiatives & Key Actions

- Climate Action Plan Initiatives and Updates
- Climate Adaptation Master Plan for Water
- Environmental and Sustainability Planning
- Grants and Research
- Innovation Pilots and Programs
- Employee Trainings and Events

# Climate Action Plan

## Climate Mitigation



## CAP Initiatives and Updates: Scope 1, 2, and 3 Emissions

- Continue implementation of GHG reduction measures
- Quantify Scope 3 emissions through surveys, logs, reporting
  - Employee Commute Survey
  - Natural Gas Inventory
  - Construction Contractor Logs
  - Utilities Analysis (Wastewater, Water, Trash)
- Continue to secure grant funds and design activities at the Delta Islands
- Continue construction activities for Three Battery Energy Storage System (BESS) projects for completion in late 2023 (Weymouth WTP) and early 2025 (Skinner and Jensen WTP)

# Climate Action Plan

## ZEV Transition



SUSTAINABILITY  
RESILIENCE  
INNOVATION

## CAP Initiatives and Updates: ZEV Transition Timeline



\*ACF mandates 50% of purchases of medium and heavy-duty vehicles with a gross vehicle weight rating of greater than 8,500 lbs. be zero emissions beginning 1/1/24.



# Climate Action Plan

## ZEV Transition



SUSTAINABILITY  
RESILIENCE  
INNOVATION

## Zero Emission Vehicles

### Metropolitan Procures its First ZEVs: 2 Ford Lightning Trucks



# Climate Adaptation Master Plan for Water (CAMP4W)



## CAMP4W Environmental Listening Session

- Community Engagement with over 60 environmental partners and leaders, including indigenous tribal nation
  - Introduce Metropolitan's Climate Adaptation Master Plan for Water (CAMP4W) Process
  - Obtain input on water-related climate vulnerabilities for the CAMP4W process to address
  - Identify common ground between community feedback, Metropolitan Board and Member Agency discussions



# Environmental Planning Section (SRI - EPS)



## Environmental Planning Section

- CEQA Compliance
  - Pure Water Southern California PEIR
  - Weymouth Plant and La Verne Site Improvements PEIR
  - West Valley Feeder Improvements MND
  - Inland Feeder-Foothill Pump Station Intertie project
- Regulatory Permitting
  - Copper Basin Discharge Valve Replacement and Access Road Improvements
  - Foothill Feeder and Casa Loma Siphon No. 1/San Jacinto Pipeline urgent repairs
- Construction Monitoring
  - Colorado River Aqueduct Structural Protection Program
  - PCCP



# Grants and Research



## Centralized Grants Management Office

Specifically, the CGMO will:

- Identify and track funding opportunities
- Maintain updated documentation, forms and policies
- Assist in drafting applications, compiling documentation, and submit funding proposals on behalf of Metropolitan
- Develop a dashboard of grant agreements and current applications underway
- Solicit annual funding priorities from Metropolitan staff and Member Agencies to inform grant tracking and advocacy efforts
- Report regularly to the Executive team on upcoming opportunities and application status.

# Grants and Research



## Centralized Grants Management Office

- FY 22-23 Metropolitan staff successfully received awards in the amount of \$143.4M
- FY 23-24 \$64.2M are pending agreements
- Additional grant funding opportunities CGMO is working on include:
  - State Climate Resilience Implementation- \$3M for workforce development
  - NOAA Regional Climate Resilience Challenge - Climate Adaptation planning and infrastructure up to \$75M
  - Funding for ZEV charging stations and vehicles

# Innovation Front

## Pilots and Programs



SUSTAINABILITY  
RESILIENCE  
INNOVATION

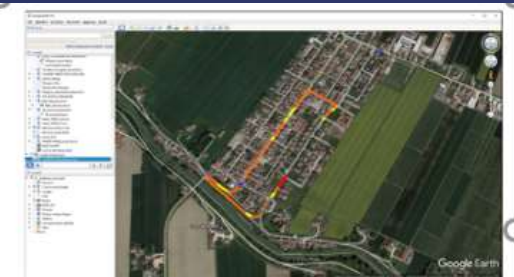
# Innovation and Technology Programs

Metropolitan hosted the 34th Western Water Technology Approval Group (TAG) (TAG) and provided a tour to the Pure Water Center. Over 60 attendees from water agencies participated in the Peer-to-Peer discussions and review of technologies.



A practical example of how data collection works

Here you can see a practical example of how the tool works



The research method is based on an appropriate detector that counts cosmic rays in a certain energy band. The tool records all the data received, crossed with GPS position and the collected data are constantly sent to the server for the real time elaboration.



# Innovation Front

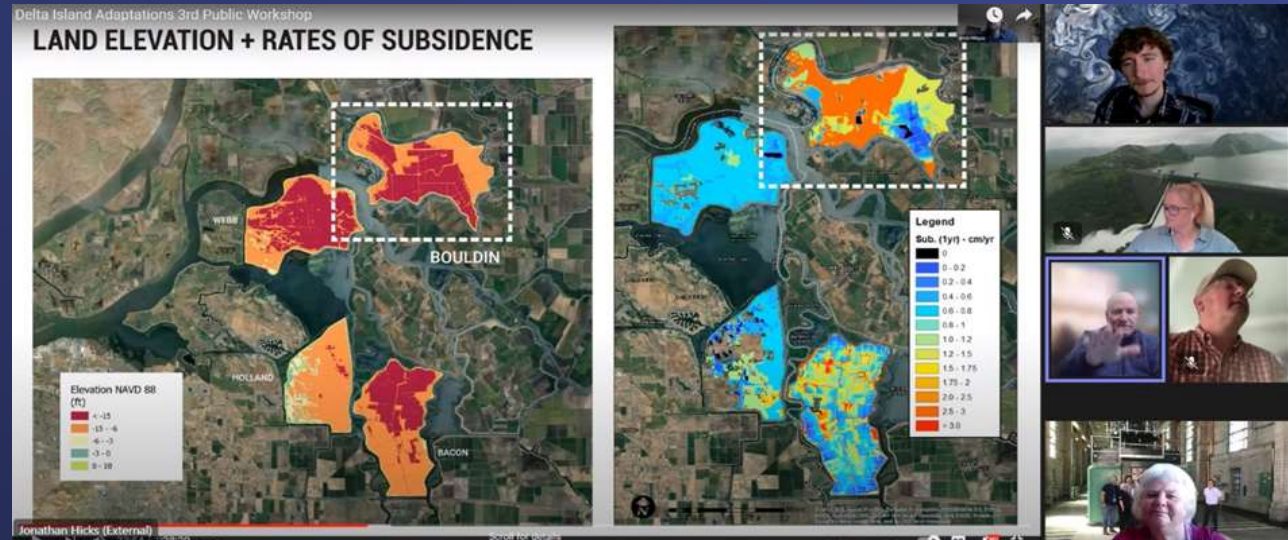
## Pilots and Programs



SUSTAINABILITY  
RESILIENCE  
INNOVATION

# Bay Delta Pilot

Pilot co-funded with Bay Delta Group and WaterStart with Rezatec.



Rezatec is using Water SAT technology with geospatial AI to remotely monitor the levees on Bouldin Island. The team now has access to both historical and live data on a platform created for the pilot. Satellite data sourcing for the ground motion trend analysis has been completed, and processing of the timeseries data is underway. Satellite data for the vegetation aspects and compliance data remain ongoing.

# SRI Workforce Resilience



## July Employee Trainings and Events

- **Envision Training:** In-person training for Metropolitan staff across the District to become Envision Sustainability Professional (ENV, SP), a globally recognized designation. Envision provides the framework and guidance in the planning, design, and delivery of sustainable and resilient infrastructure.
- **Lunch and Learn:** NASA Program Director of Western Water Applications Office to present on the use of satellite on water resource management and climate change related topics.



Envision Training; Lunch and Learn





# SRI Workforce Resilience



SUSTAINABILITY  
RESILIENCE  
INNOVATION

## July Employee Trainings and Events

- **Sustainability Expo Roadshow:** Outreach to six field sites (three Desert Pumping Plants, two Treatment Plants, and Lake Mathews), to present SRI Initiatives and gather internal stakeholder feedback on CAMP4W.



Lake Mathews



Gene Pumping Plant



Jensen Treatment Plant  
One Water and Stewardship Committee



Iron Mountain Pumping Plant

