



One Water Committee and Stewardship

Addition of Tree Rebate to Turf Replacement Program

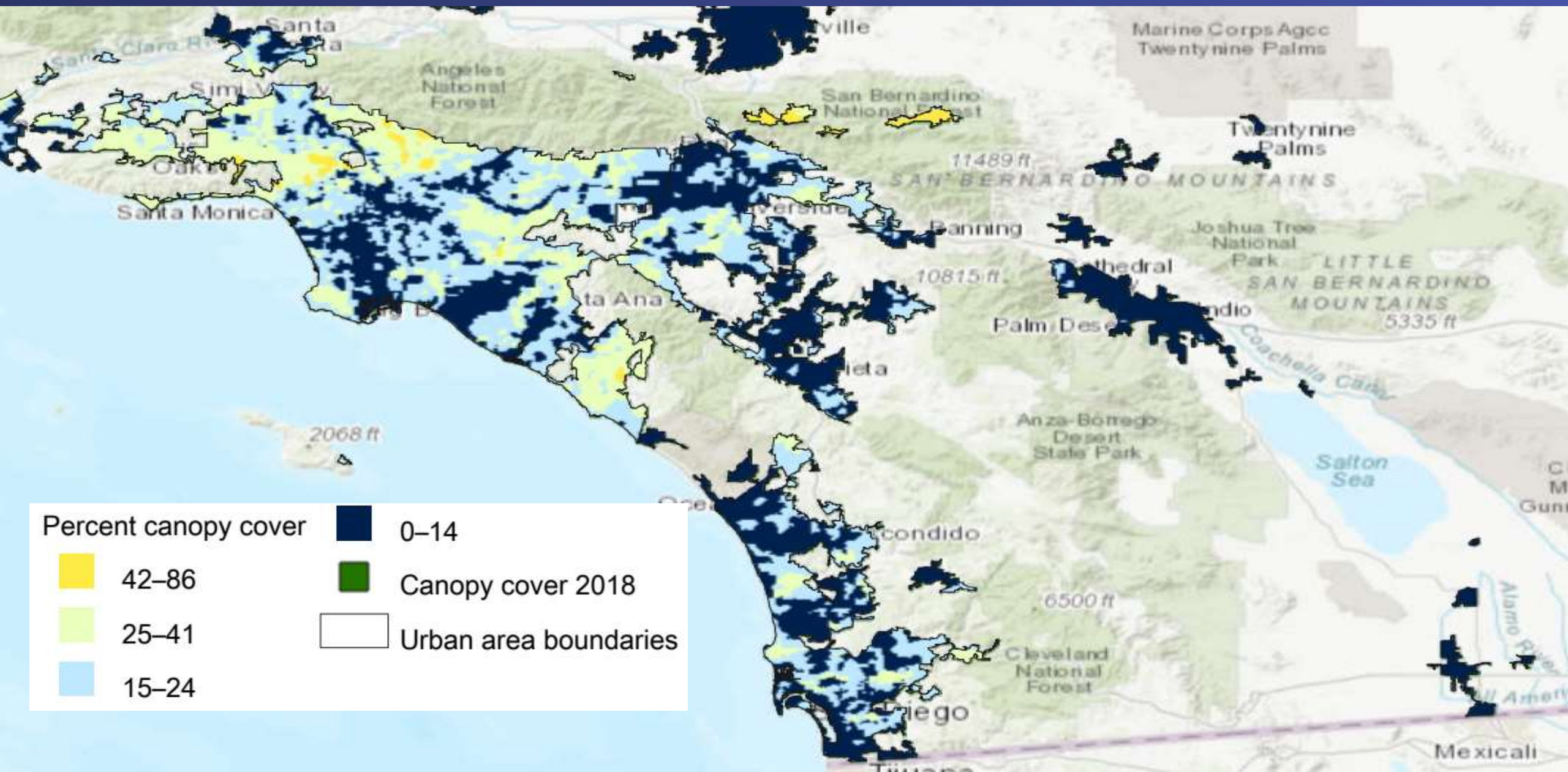
Item 7a

July 10, 2023

Program Development

- Water use efficiency program advisory committee request
 - Details developed by sub-committee of 6 agencies
- Met with NGOs to discuss program details and resources
 - Positive feedback on program idea and details
 - Provided resources and expertise on recommended tree list and exclusion list





Tree Rebate Program

Benefits of Trees in Turf Replacement Program

- Urban cooling
 - Trees reduce temperatures by 2-6° F
- Tree root infiltration increases water storage in soil
- Replacing lawn with trees and CA Friendly landscaping reduces water use by at least 30%
- Increases green spaces and urban forests in urban areas

Tree Rebate Program

Other Benefits of Trees

- Urban cooling and energy conservation
- Carbon sequestration
 - Removes 48 lbs of carbon dioxide per year
- Promotes healthy soil and reduces erosion
- Air quality improvements
 - Filters up to 43 lbs. of particle pollutants per year
- Increases and protects biodiversity
- Increases neighborhood property values
- Reduces stress and improves health

Program Details

- Rebate added to Turf Replacement Program for Residential and Commercial, Industrial, and Institutional properties
- \$100 rebate per tree planted; max 5 trees
 - 15-gallon minimum size
 - Edible fruit trees allowed in residential projects
- 1 new tree = 3 plants



Tree Rebate Program

Program Resources

- Tree definition
- Exclusion list – hedges, invasives, non-native palms
- Recommended tree plant list
- Care and maintenance/watering guide

Equivalent Incentive Estimation

	Residential	Commercial
Avg # of Apps Received Per Month(3-month AVG)	516	54
Avg Square Ft. Per Application	1,732	14,725
MWD Turf Replacement Incentive	\$2.00	\$2.00
Equivalent Additional Incentive Per Sq Ft. w 1 Tree Bonus	\$0.06	< \$0.01
Equivalent Additional Incentive Per Sq Ft. w 5 (max) Tree Bonuses	\$0.29	\$0.03

Budget Impacts

	Residential	Commercial
Avg # of Apps Received Per Month (3-month AVG)	516	54
Avg Square Ft. Per Application	1,732	14,725
Dropout Rate	40%	40%
Additional Annual Expenditures for Tree Rebate (Assumes 2 Trees/App)	~\$750k	~\$78k

- Annual Tree Rebate expenditures expected to cost up to \$830K based on current activity and dropout rates = 3% of total projected annual expenditures for TRP

Next Steps

- Obtain feedback and incorporate changes into the program
- Present to MWD Board for approval
- Program implementation expected fall/winter 2023

