



Organization, Personnel & Effectiveness  
Committee

# Safety and Environmental Program Quarterly Update

Item 6a

April 13, 2026

Presented by: Ofelia Perez

## Item 6a

Office of Safety,  
Security,  
& Protection

Safety,  
Regulatory  
& Training

## Subject

Safety and Environmental Program  
Quarterly Update

## Purpose

Provide update on metrics, initiatives,  
and regulatory activities

Office of Safety,  
Security,  
& Protection

Safety,  
Regulatory  
& Training

## Quarterly Report

- Injury Data and Metrics
- Regulatory Inspections
- Communications
- Site Support Activities
- Diemer Reservoir and Foothill Plant Safety Incidents Update

# Injury Data and Metrics

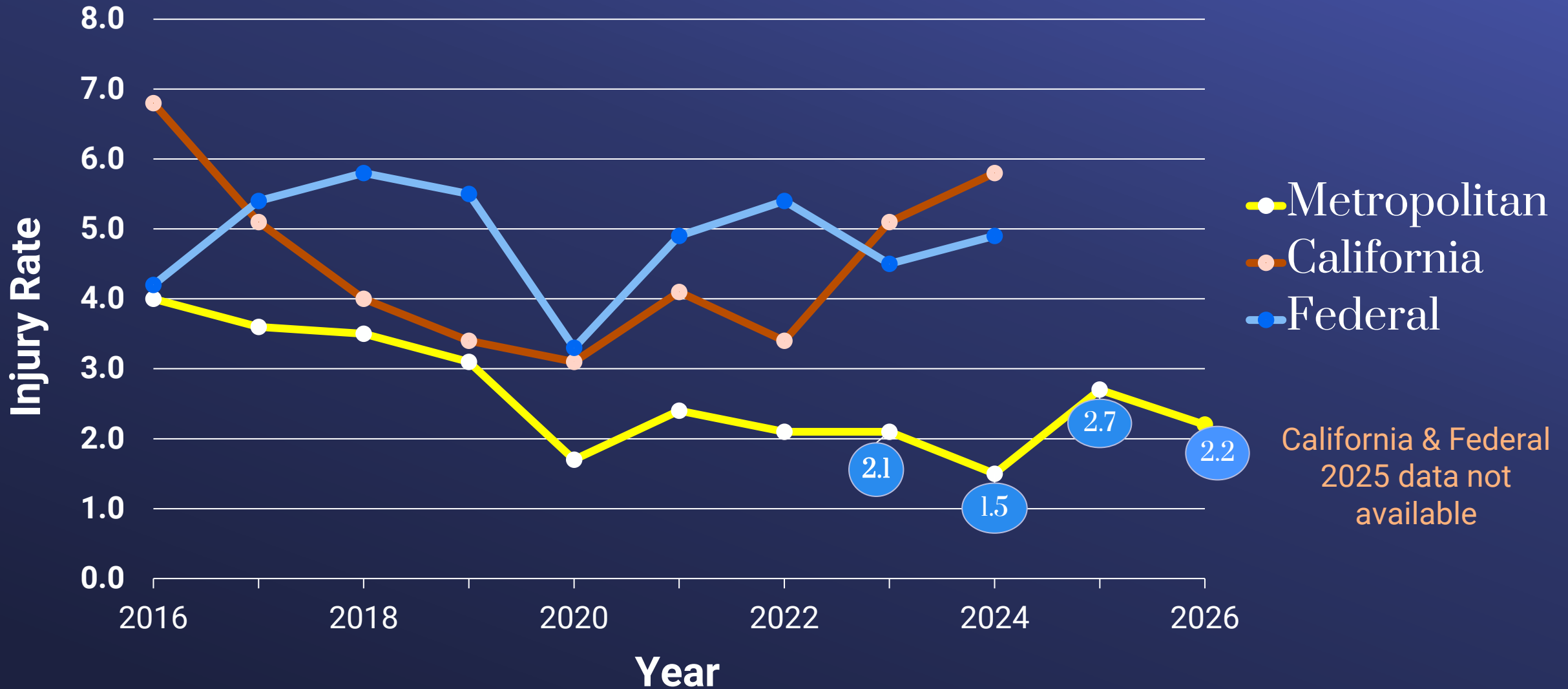
as of March 20, 2026

## Incident Rate Enterprise-Wide

Year	#EE	# Recordable Injury	Total Incident Rate (IR)
2024	1907	26	1.5
2025	1925	47	2.7
2026 As of March 20, 2026	1926	7	2.2
<b>CALIFORNIA AVERAGE INCIDENT RATE (2024)</b> *2025 not available			<b>5.8</b>

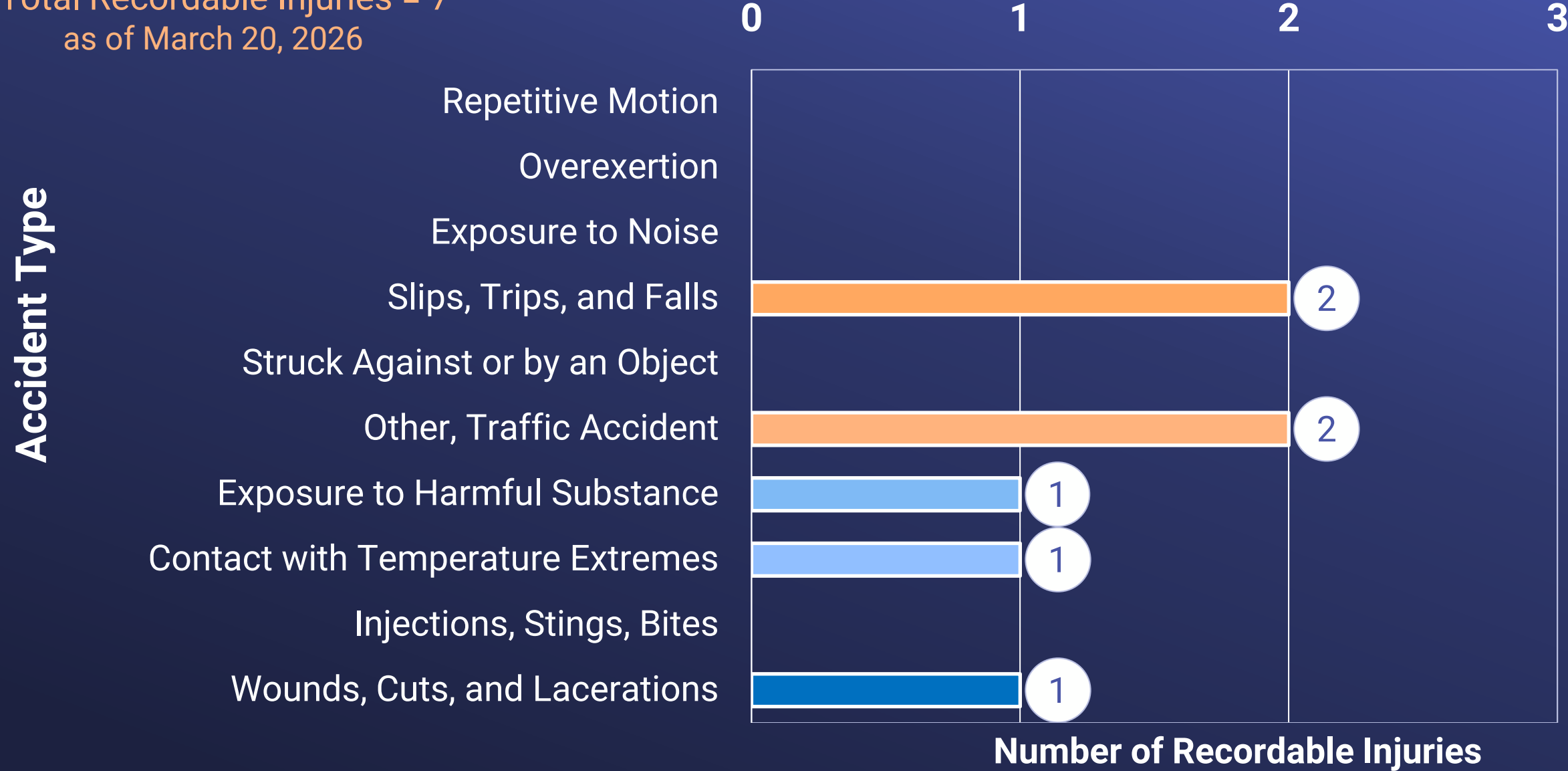
# Injury Rate vs. Industry Average

as of March 20, 2026



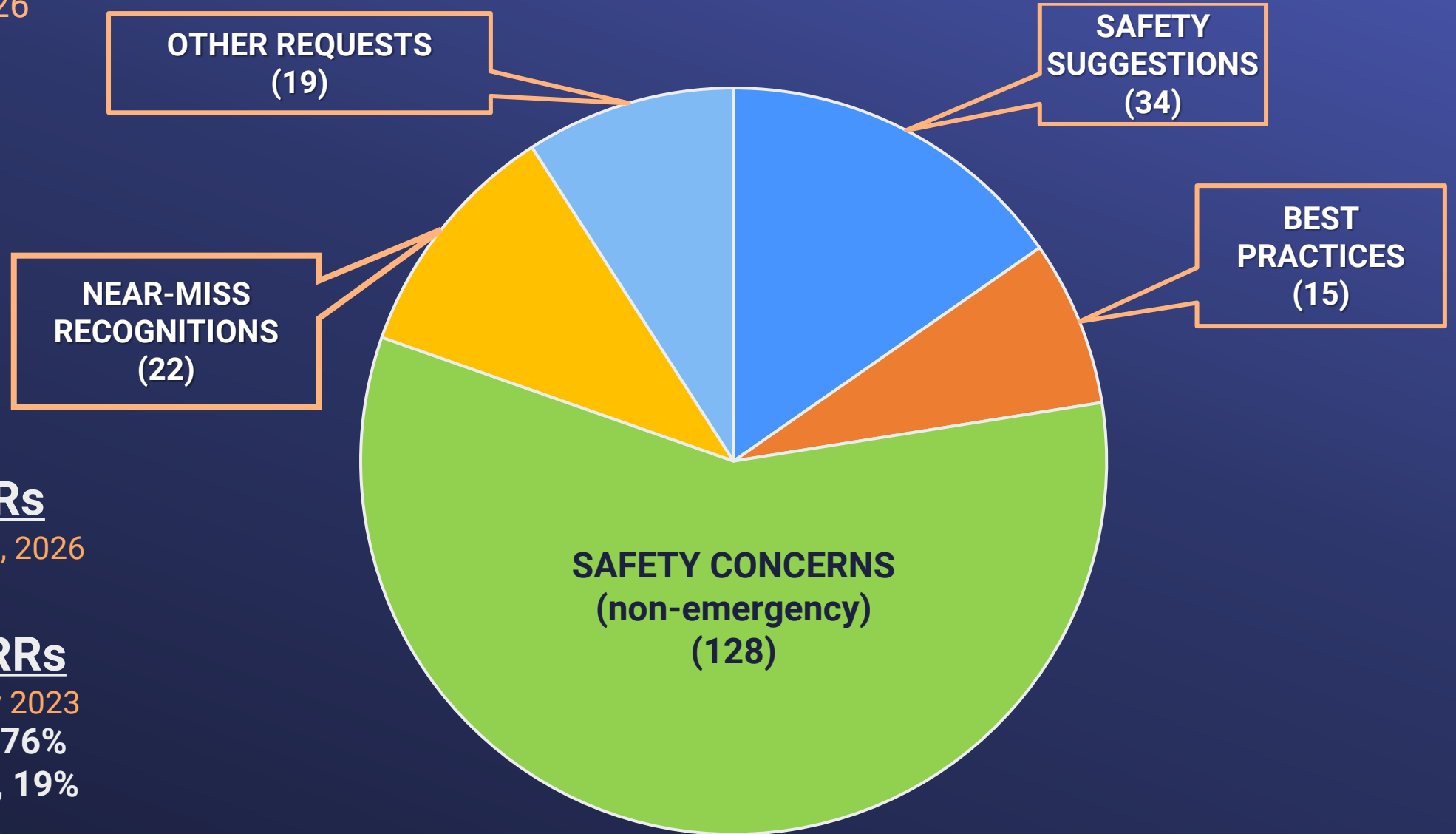
# Recordable Injuries by Accident Type

Total Recordable Injuries = 7  
as of March 20, 2026



# Safety Review Requests (SRR)

as of March 20, 2026



## 14 New SRRs

January – March 20, 2026

## Total 218 SRRs

submitted since Nov 2023

165 Completed, 76%

41 In-Progress, 19%

12 Pending, 5%

# EHS Key Performance Indicators (Enterprise-wide)

(4th Quarter 2025)

Key Program Indicators	Type	Goal	1st Qtr Results <sup>1</sup>	2nd Qtr Results <sup>1</sup>	3rd Qtr Results <sup>1</sup>	4th Qtr Results <sup>1</sup>
<b>Safety Inspection Completion Rate</b> (Operations)	Leading	> 90%	99%	99%	99%	91%
<b>Mandatory Safety Training Completion</b> (District-wide)	Leading	≥ 90%	92%	92%	90%	92%
<b>Toolbox Completion Rate (every 10 days)</b> (Operations)	Leading	> 90%	93%	95%	95%	94%
<b>Safety Committee Meeting Rate</b> (Operations)	Leading	≥ 90%	100%	100%	100%	100%

<sup>1</sup> Green shading denotes goal met

# EHS Key Performance Indicators (District-wide)

as of March 20, 2026

Key Program Indicators	Type	Goal	Reported
Recordable Injuries	Lagging	0*	7
Regulatory Violations	Lagging	0*	3
Reportable Spills	Lagging	0*	3

\* Aspirational Goal

# Regulatory Inspections

## Safety Inspections



### Jensen 9/23/25 – Routine PSM Inspection Completed

No violation after Process Safety Management (PSM) inspection and chlorination process

STATE OF CALIFORNIA  
DEPARTMENT OF INDUSTRIAL RELATIONS  
Division of Occupational Safety and Health  
Process Safety Management - South Non-Refinery  
7 MacArthur Place, Suite 810  
Santa Ana, CA 92707  
Tel. # (714) 558-4600 Fax # (714) 558-4634

GAVIN NEWSOM, Governor

**NOTICE OF NO VIOLATION AFTER INSPECTION**

METROPOLITAN WATER DISTRICT OF SOUTHERN CALIFORNIA - JOSEPH JENSEN WATER TREATMENT PLANT  
13100 Balboa Blvd.  
Granada Hills, CA 91344

An inspection was conducted by Osmar Alvidrez at a place of employment located at 13100 Balboa Boulevard, Granada Hills on 09/23/2025. This inspection was initiated by any or all of the following reasons: complaint, follow-up, referral, planned.

Description of area(s) inspected:  
Process Safety Management Program and your Chlorination Process

Signature \_\_\_\_\_  
Compliance Safety and Health Officer

Signature \_\_\_\_\_  
District Manager

Date of issuance: February 20, 2026 Date inspection completed: February 20, 2026

Said inspection was completed on February 20, 2026. It has been determined that no violation of any standard, rule, order or regulation set forth in Title 8, California Code of Regulations and Division 5 of the California Labor Code has been found as a result of this inspection.

This notice relates solely and exclusively to the inspection on the above date, which was not necessarily a comprehensive inspection of the worksite. Due to the transitory nature of worksite conditions, violations can occur occasionally or routinely and may be undetected by any given inspection. This notice does not preclude the issuance of citations on any future inspection.

0950674 ID M2178 CSHO ID 0011-2025 Optional Report No. 1852525 Inspection No.

(Received 2/20/26)

# Regulatory Inspections

## Weymouth Routine PSM Inspection – 10/28/25

3/12/26 - Received 4 alleged violations

## Safety Inspections



- Recordkeeping
  - Medical records allegedly not available at time of the inspection
- Emergency Eyewash and Shower
  - Eyewash and shower not painted a bright color as allegedly required
- Process Safety Management – Chlorine System
  - PHA 2019 Revalidation allegedly late by three months
  - Emergency Action Plan Training Requirements allegedly not adequately detailed

# Safety Inspections



## Regulatory Inspections

### Diemer Inspection - 6/2/25

- Appealed 4 alleged violations
- Informal Conference – 2/4/26
- Status Conference – 3/2/26

### Hinds Inspection - 7/30/25

- Appealed 3 alleged violations
  - 2/9/26 - Appeal paused pending Bureau of Investigations' review

# Regulatory Inspections

as of March 20, 2026

## Environmental Compliance Inspections



**Jensen 3/3/26 – Risk Management Program  
for Chlorine System Process**

**Weymouth 3/4/26 – Risk Management Program  
for Chlorine System Process**

Note: **17 CUPA** inspections concluded

- 16 CUPA inspections with no violations
- 1 CUPA inspection with violations

**5 AQMD** inspections concluded with no violations

# Safety Forum

January 2026

## Communications

### Welcomed New Chair/Co-Chairs

- ✓ Reviewed the role of the local Safety Committees
- ✓ Reviewed HSE 101.1 – Safety Inspection Procedure
  - Inspection guidelines and Safety Checklist
  - Safety Committee's Roles and Responsibilities
  - Safety Committee SharePoint site
- ✓ Reviewed Safety Review Request (SRR) process, improvements, and clarifications
- ✓ Reviewed Safety Advisory Updates since the last Forum

# Communications

## Safety Alert and Safety Talk

February 2026

### Hand Injury Prevention

- Keep your free hand away from the point of operation
- Wear proper gloves for the job
- Maintain machine guarding
- De-energize and lock out equipment before maintenance
- Do not wear jewelry

### MWD Safety Talk

#### TB056 – Hand Safety



#### Hand Safety

Hand protection is vital and should be a concern for all employees and managers. Hands play a role in virtually every task on the job and are vulnerable to injury. According to the U.S. Bureau of Labor Statistics more than 1 million workers are sent to the emergency room each year because of serious hand injuries. Seventy percent of the victims were not wearing gloves and another 30% had on damaged or inadequate gloves.

Common hand injuries includes lacerations, crush injuries, avulsions (parts torn away), burns, punctures and fractures. Most injuries were caused by carelessness, bypassing safety procedures, distractions or lack of awareness. Hand injuries are preventable with the right tools, PPE and training.

#### Safe Work Practices (DOs and DON'Ts)

##### DO

- Complete or review the Job Safety Hazard (JSH) Checklist before new jobs or when using new equipment.
- Use the right tool for the job and properly - **ALWAYS!** Do not substitute.
- Inspect equipment before use. Tools or machines with missing/misaligned guards or defective safety devices must not be used.
- Always pay attention to where both hands are located and placed, especially around machinery or moving parts. Be attentive to the task from the beginning to the end.
- Use push sticks or other appropriate tools to remove your hands from work tasks that can result in injuries to the hand or fingers.
- Follow Metropolitan's Lockout/Tagout procedures when repairing equipment. Working on energized equipment can cause severe injuries or death.
- Take breaks to stretch hands, fingers, and arms.
- Use proper PPE for the hazard. Refer to HSE 115 Personal Protective Equipment for more information on appropriate gloves for the job).

##### DON'T

- Don't wear jewelry, gloves, or loose-fitting clothing around machinery or moving parts.
- Don't forget to take breaks if you perform constant repetitive motions.
- Don't pick up sharps or broken glass without wearing the appropriate gloves. Use tools such as pliers or forceps to pick up sharps to avoid punctures to the hand.

Safety Talk – Hand Safety

# Site Support Activities – CRA Shutdown



Copper Basin  
Fiberglass Tank Rehab



Tunnel Cleaning Machine (TCM)



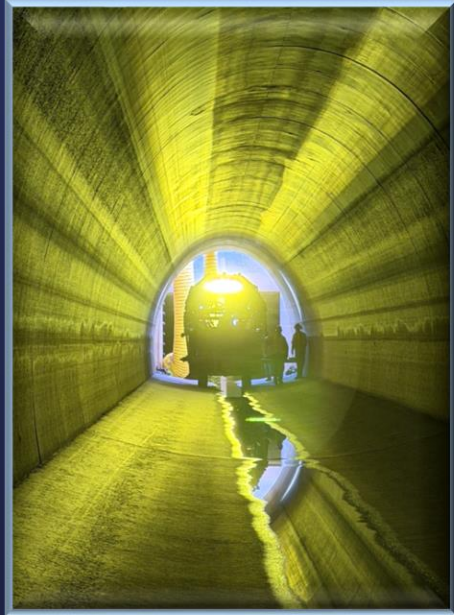
TCM Training



Eagle Mountain  
Toolbox Meeting & Work Shift



April 13, 2026



Organization, Personnel & Effectiveness Committee



Eagle Mountain 3D Imaging

Item # 6a Slide 16

# Diemer and Foothill Safety Incidents Update

- Board, staff, and Bargaining Units were notified
- Incidents were discussed with Cal/OSHA
- Both employees received medical evaluations
- Investigations continue for both incidents
- Will update Board on findings

## MWD Safety Talk


### TB180 – Preventing Slips, Trips, and Falls

Falls are one of the leading causes of serious workplace injuries and fatalities. The good news is that almost all falls are preventable. Each of us plays a key role in recognizing hazards and taking steps to control them.


To prevent falls, we first need to understand the types of walking-working surfaces we encounter and the hazards they may present.

#### Common Slips, Trips, and Fall Hazards


- **Working at Heights (4 ft or more):** Pedestals, ladders, platforms, and other elevated surfaces require protection from leading edges by guardrails or railing and strict attention to safety procedures
- **Floor Holes:** Examples include pits, missing floorboards, sunken gravel or dirt, ladder openings, cracked concrete, drains, and precast openings.
- **Manholes:** Uncovered or improperly covered manholes can result in severe falls.
- **Excavations and Trenches:** Falls can occur when leading edges are unprotected or when areas are not properly marked or barricaded to restrict access.
- **Protruding or Obstructing Objects:** Any item extending from floors or walls can cause trips or sudden loss of balance.
- **Shafts:** Vertical openings such as elevator shafts, ventilation shafts, and stairwells must be secured.
- **Lack of Proper Access:** Missing ladders, ramps, or safe access points to elevated areas increases risk.
- **Ladders:** Damaged, unsecured, or improperly placed ladders increase fall risk.
- **Stairs:** Running, skipping steps, or carrying items that block your view or could spill increases the risk of falling.
- **Roof Openings:** Skylights, roof hatches, and uncompleted roof sections present fall-through hazards.
- **Inadequate Lighting:** Poor lighting can hide holes, leading edges, and trip hazards.
- **Poor Housekeeping:** Debris, uneven flooring, and general clutter raise the likelihood of slips and trips.



Poor housekeeping and floor projections



Cracks or holes in surfaces



Unprotected sides of floors, platforms, and other surfaces

#### Preventing Slips, Trips, and Falls

- Complete a Job Safety Hazard (JSH) Checklist before beginning any task—even those that seem routine.
- Take the time to walk the site to identify hazards and consider how your work may affect others nearby.
- Guard all floor holes large enough for a foot to enter. Use guardrails, toe boards, or strong covers that can withstand at least twice the expected load.
- Install guardrails around all elevated open-sided platforms and floors.
- Ensure ladders extend at least 3 feet above the landing for safe transition on and off.
- Protect workers from falls into equipment or machinery, regardless of height, by using appropriate guardrails and barriers.
- Use proper work platforms or scaffolding when areas are difficult to access safely.
- Use additional fall protection such as personal fall arrest systems, safety nets, stair railings, and handrails when needed.

**REMINDER:** Contact your local EHS Field Specialist to review and evaluate hazards. Reach out to other work teams (e.g., CSU, ESG, or others) to brainstorm and help you set up appropriate control measures.

## Safety Talk – Preventing Slips, Trips, and Falls

