



Engineering, Operations, & Technology Committee

Webb Tract Wetland Restoration Project Update

Item 6b

May 11, 2026

Presented by: Malinda Stalvey

Item 6b

Webb Tract Wetland Restoration Project Update

Subject

Webb Tract Wetland Restoration Project Update

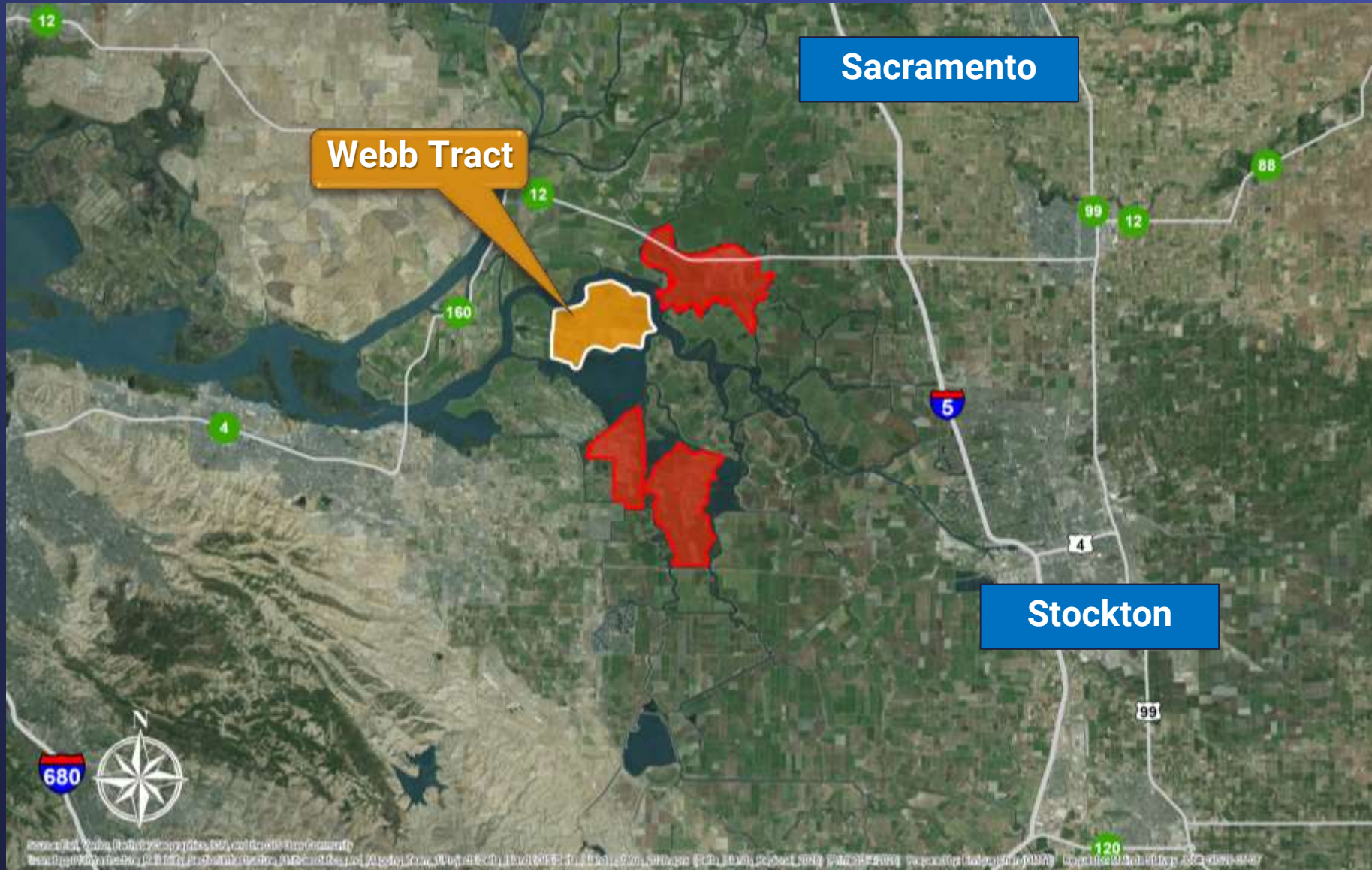
Purpose

Update on the Webb Tract Wetland Restoration Project

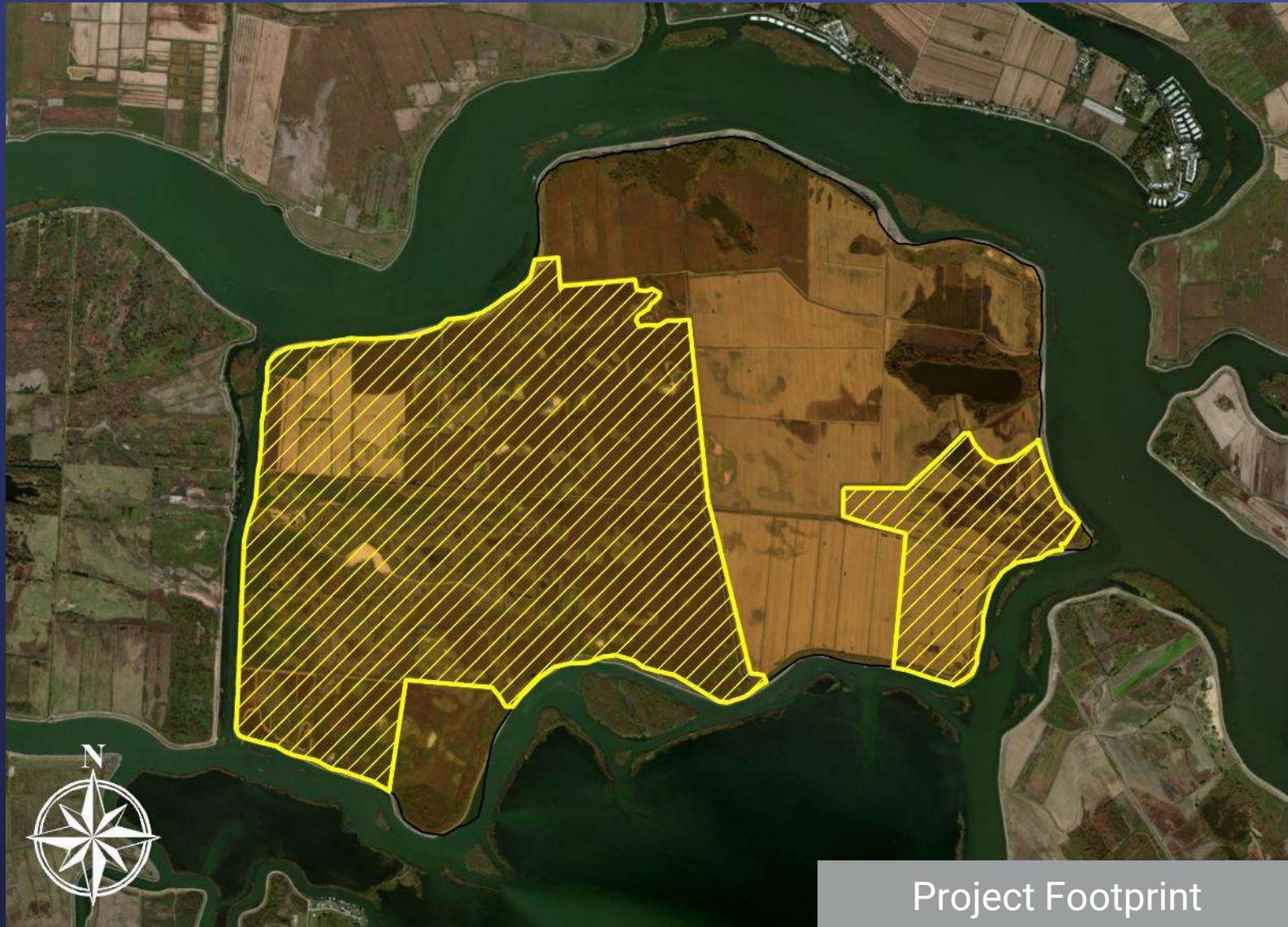
Next Steps

Board award of a construction contract

Location Map



Webb Tract Wetland Restoration Project Footprint



Webb Tract Key Points

- Meet Board goals specifically related to financial sustainability, supply reliability & ecosystem health
- Focus on grant & its benefits, other revenue opportunities being considered

Webb Tract Wetland Restoration Project Update

Background

- Island purchased in 2016 for \$47.6 M
 - Deeply subsided, land below sea level
 - Only accessible by ferry
 - Land use limited by County
 - One of DWR's key islands for flood control
 - Rice lease awarded April 2026
- Wetland Restoration Project
 - Board authorized final design in October 2023
 - Board to consider construction contract early summer

Sacramento - San Joaquin Delta Conservancy Grant



\$20.9 Million Grant Awarded - 2023

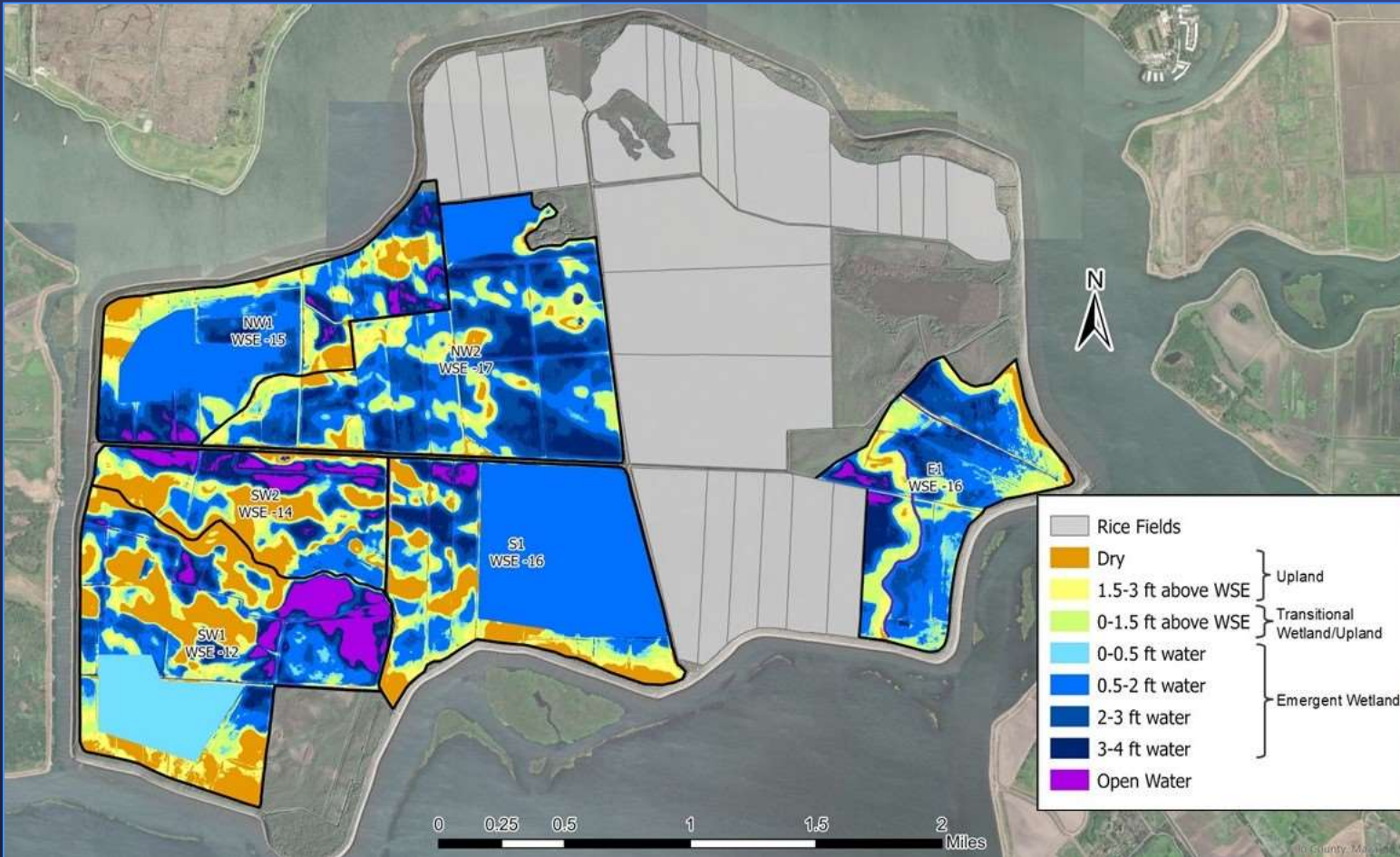
- Funds two projects in two phases
- Wetland Restoration (\$16.1 M)
 - Design, CEQA, permitting, GHG baseline (Phase 1)
 - Construction, GHG monitoring (Phase 2)
- Rice Conversion (\$4.8 M)
 - Lease Board award April 2026
- Five-year funding term (2024-2029)
- Quarterly reimbursements
- Grant expected to cover ~70% of projects costs

Wetland Goals & Objectives

- Construct ~2,800 acres of wetland & upland habitat
- Create & support vital habitat
- Additional Benefits:
 - Halt and/or reverse subsidence
 - Reduce GHG emissions
 - Generate revenue from GHG credits
 - Explore food web benefits
 - Explore paludiculture opportunities
 - Integrate indigenous ecocultural values



Webb Tract Wetland Restoration Project Design



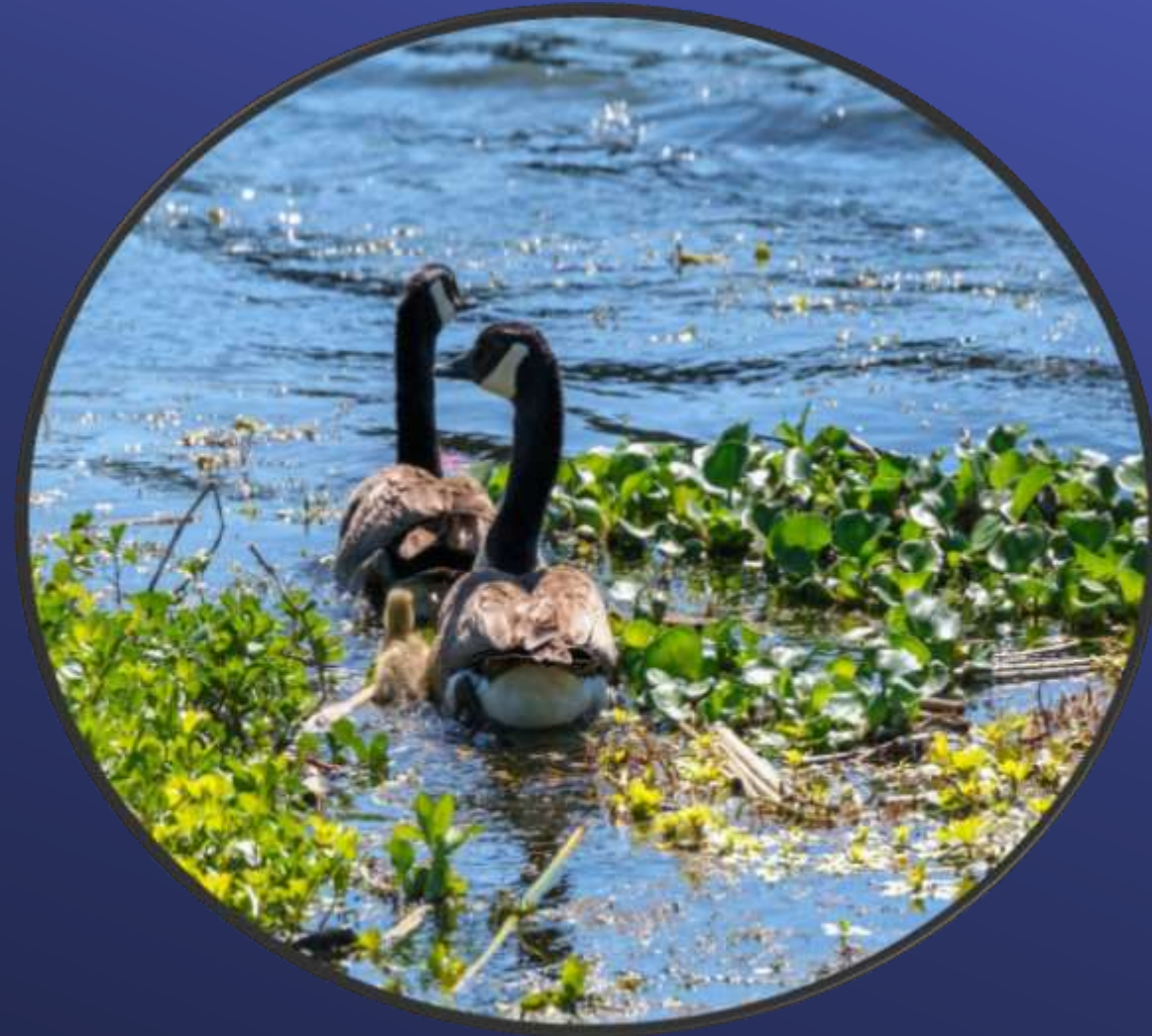
Wetland Restoration Project

Habitat	Initial acreage*	Estimated acreage after 15 years	Estimated subsidence reversal after 15 years
Upland	548 ac	319 ac	0 ft
Seasonal Wetland	329 ac	229 ac	0 ft
Emergent Marsh	1,861 ac	2,190 ac	1.5 ft
Open Water	112 ac	112 ac	0 ft
Total	2,850 ac	2,850 ac	

* Acreages above do not include avoided/preserved habitats outside of wetland management units.

Environmental Compliance

- Statutory Exemption for Restoration Projects received – July 2025
- All permits received – January 2026
 - USACE (Regional General Permit 16)
 - USFWS Section 7
 - SHPO 106 Consultation
 - RWQCB (Statewide Restoration General Order)
 - CDFW (Restoration Management Permit)

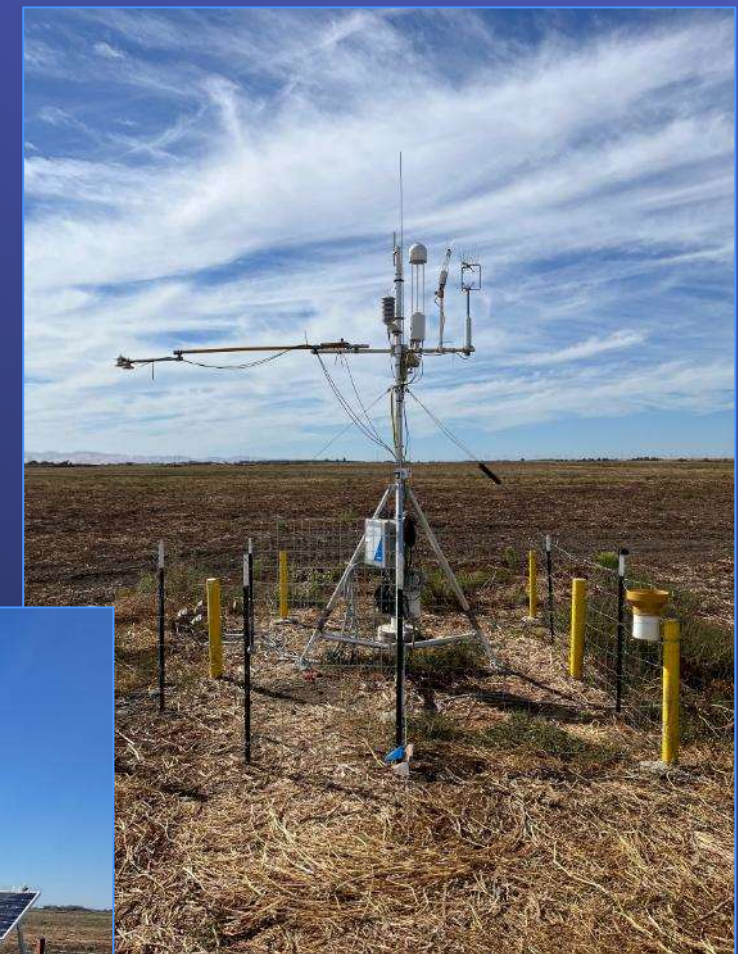


Greenhouse Gas (GHG) Measurements

- Two eddy covariance stations on Webb (2024)
 - Carbon dioxide flux
 - Methane flux
 - Nitrous oxide flux
 - Depth to groundwater
 - Temperature
 - Wind direction/speed



Eddy Covariant
Tower Rice



Eddy Covariant
Tower Wetland

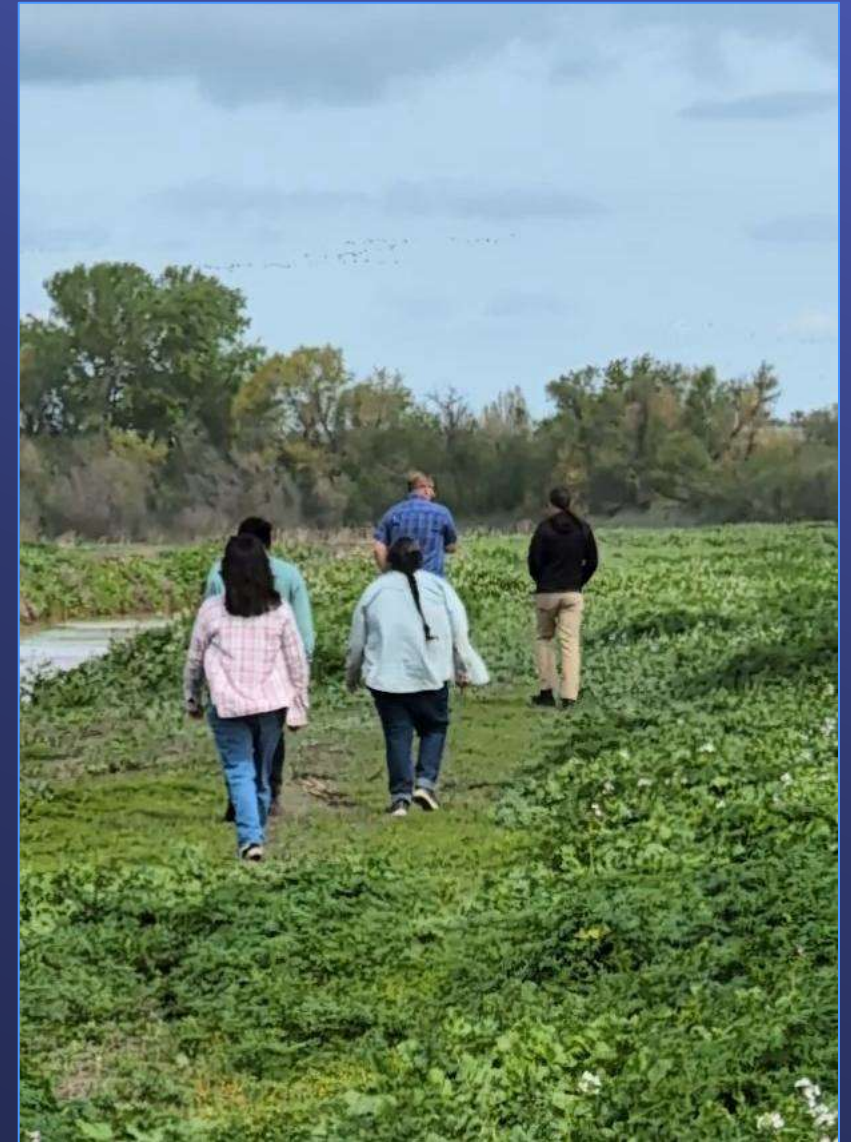
Climate Action Plan

- Carbon sequestration is an important part of meeting CAP goals
 - CAP Measure – Develop strategy to utilize rice and/or wetlands to achieve emissions reductions



Ecocultural Stewardship

- Established ecocultural working group to participate in the design process
- Integrated indigenous knowledge
- Encouraged nature-based solutions
- Considered:
 - Intergenerational planning
 - Functional ecocultural system
 - Integration & normalization of ecocultural species



Webb Tract
Tribal Outreach Site Visit

Public Outreach Activities

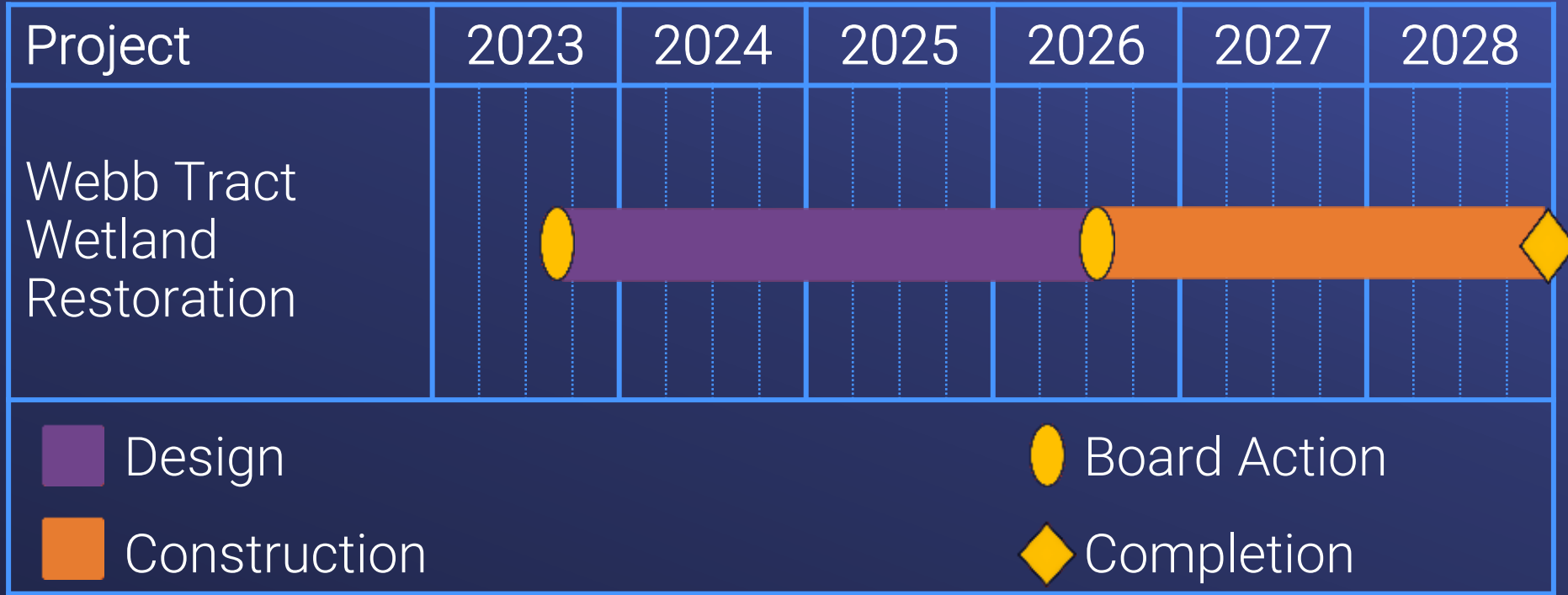


- Three hybrid public meetings
- Presentations to local agencies
- Quarterly E-blast Newsletters
- Metropolitan website updates – [Webb Tract Landscape Restoration & Farming](#)

Broad Project Support

- California Farm Bureau
- Central Delta Water Agency
- Confederated Villages of Lisjan Nation
- Contra Costa County
- Contra Costa County Water District
- Contra Costa Resource Conservation District
- Delta County Coalition
- Department of Water Resources
- Ducks Unlimited
- East Bay Regional Park Service
- Environmental Defense Fund
- Sacramento-San Joaquin Delta Conservancy
- Farmers' Rice Cooperative
- Grassland Water District
- Northern California Water Assn.
- Reclamation District 2030
- Restore the Delta
- San Luis-Delta Mendota Water Authority
- Solano County
- State Water Contractors
- The Nature Conservancy

Project Schedule



Next Steps

- Board considers award of construction contract
 - Early summer 2026
- Begin construction
 - Summer 2026



