



One Water & Stewardship Committee

Update on Chino Basin Program Development with Metropolitan and Inland Empire Utilities Agency

Item 6c

August 19, 2024

Item 6c Update on Chino Basin Program

Subject

Update on the Chino Basin Program Development
with Metropolitan and Inland Empire Utilities
Agency

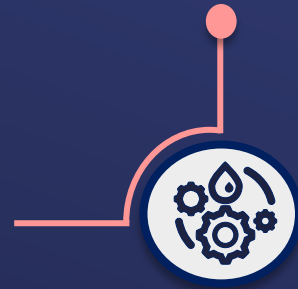
Purpose

Provide update on Chino Basin Program
activities

Previous Board Briefings

June 2021

Update on Prop 1 Water Storage Investment Program (WSIP) projects and an overview of the Chino Basin Program (CBP); Metropolitan provided a letter of intent



April 2022

Board authorized General Manager to negotiate an agreement consistent with draft terms of Metropolitan/IEUA Exchange Agreement



March 2022

Update on the CBP and pending terms of agreement with IEUA



April 2023

Update on CBP activities and Augmented CBP study



Proposition 1 Overview

- Proposition 1 approved \$7.5 billion of funding in November 2014
 - \$2.67 billion allocated for water storage projects with public benefits
- California Water Commission (CWC) administers this funding through the Water Storage Investment Program (WSIP)
- Inland Empire Utilities Agency (IEUA) proposed the Chino Basin Program
 - CBP was awarded conditional funding of \$215M
 - Metropolitan is a facilitating partner and is not providing direct financial contribution to project costs

Chino Basin Program WSIP Framework



CBP accomplishes three main goals:

- Provides storage of advanced treated recycled water in the Chino Basin
- Allows for environmental pulse flows for fishery benefit
- Provides replacement water supply in Metropolitan service area

Metropolitan's participation is two-fold:

- Transfer a portion of MWD's SWP Table A (max 40 TAF) to the State in a pulse flow call year
- Take delivery of stored CBP groundwater in substitution for the transferred SWP Table A

Benefits for Metropolitan

- Emergency Use provision for up to 50 TAF (40 TAF in a single year)
- Improve regional reliability and system flexibility in Metropolitan's service area
 - New infrastructure in an otherwise SWP Dependent area
- CBP facilities could potentially be used for a regional storage and recovery program once pulse flow program term is completed

Program Execution

- Total CBP pulse flow obligation to the State is 375 TAF over 25-year period
 - Maximum 40 TAF of Metropolitan Table A supplies provided for pulse flows per call year
 - Repayment to Metropolitan from CBP achieved through in-lieu delivery (30 TAF) and direct pump-in (10 TAF)
- Pulse flow exchange would not be requested in critical dry years
 - Exchange limited to below normal and dry years
 - Program being developed under tenet of “No Harm”

Program Execution

- IEUA/Metropolitan joint operating committee will be formed to coordinate exchange
 - Annual assessment to decide whether a pulse flow exchange can be accommodated depending on SWP allocation, storage conditions, etc.
- If agreed to, pulse flow would likely occur in April-May
 - Metropolitan transferred supplies to be used for physical pulse flow release
- Delivery of CBP supplies to Metropolitan would likely begin in July to the following June

Recent Activity

- Developing agreement language consistent with April 2022 Board-approved draft terms
 - Metropolitan/IEUA Exchange Agreement
- Coordinating with DWR on appropriate mechanism to transfer Table A supplies for pulse flow
- Determining agreements necessary for program implementation, in conjunction with IEUA

Next Steps

- Finalize agreement language for Metropolitan/IEUA Exchange Agreement
 - Agreement will be brought to both IEUA and Metropolitan Board for approval
- Coordinate with DWR on necessary agreements
- Provide as needed input on CBP TAKE Facilities Preliminary Design Report
 - Includes decision on potential upsized facilities as part of Augmented CBP

