



Engineering, Operations, & Technology Committee

Sepulveda Feeder Pump Stations Project

Item 8-2

July 7, 2025

Item 8-2

Sepulveda Feeder Pump Stations

Subject

Authorize an amendment to an existing design-build agreement with J.F. Shea Construction Inc. to initiate Phase 2 of the Sepulveda Pump Stations project, including a \$52.96 million increase for a new not-to-exceed amount of \$103.36 million; and authorize increases to two existing agreements for technical support services

Purpose

To improve the supply reliability for State Water Project-dependent areas

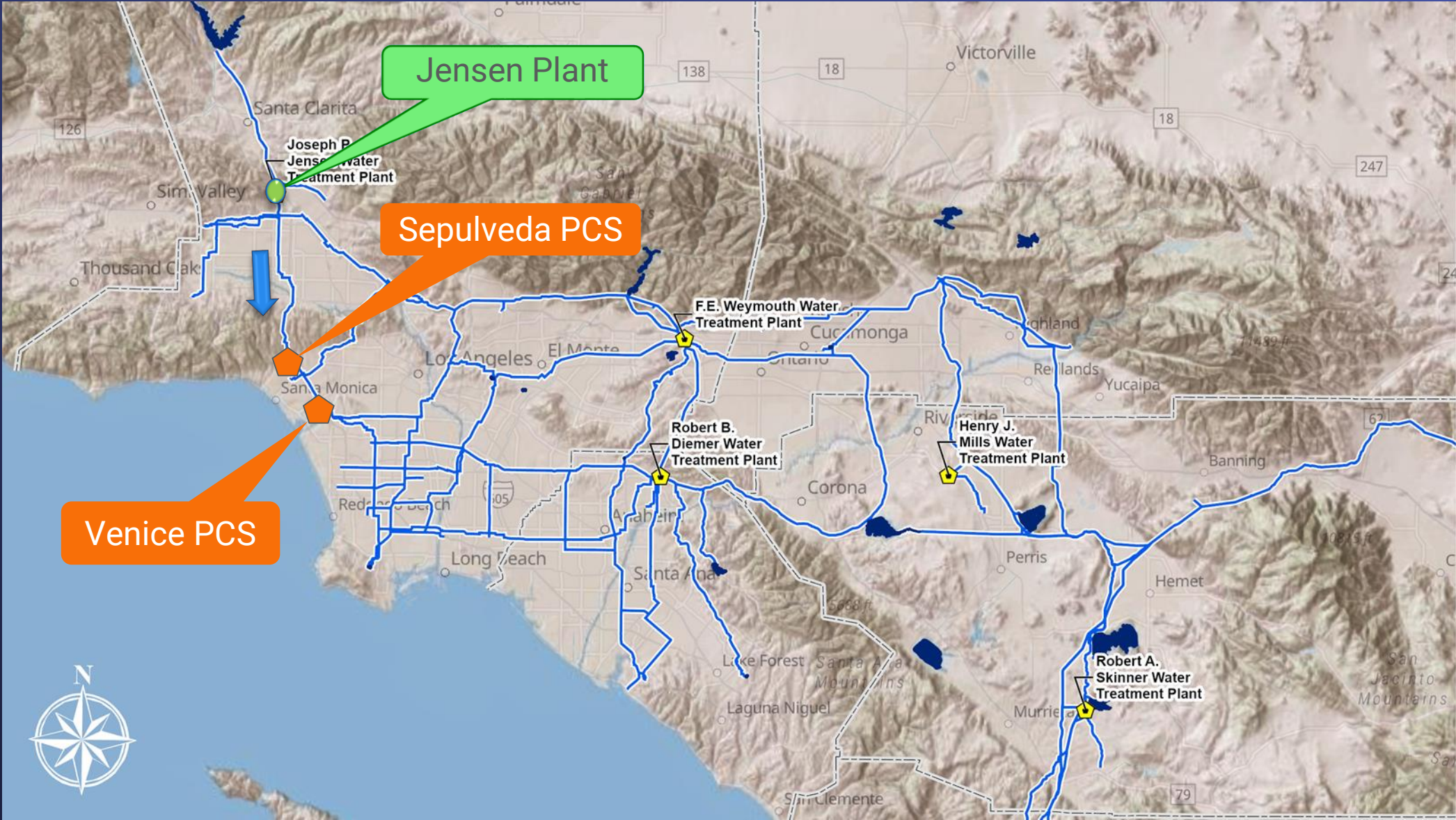
Recommendation and Fiscal Impact

Authorize amending an existing Progressive Design Build (PDB) agreement for the Sepulveda Feeder Pump Stations project

Fiscal Impact – \$77 million

Budgeted

Current Operation



Pumping Water Up Sepulveda Feeder Enhances Drought Resiliency



Sepulveda Feeder Pump Stations (30 cfs)



Sepulveda Pump Station Layout

Background

New pump stations at Sepulveda Canyon & Venice Pressure Control Structures allow reverse flow in Sepulveda Feeder

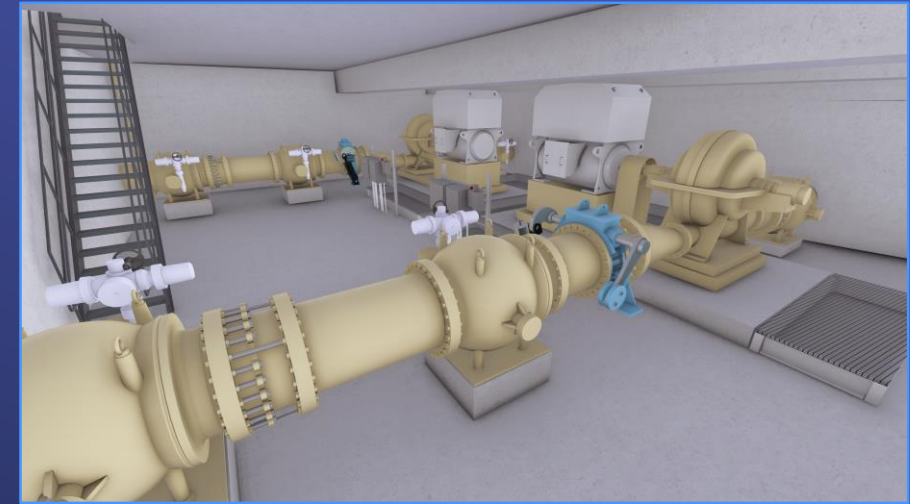
- Provides initial hydraulic capacity at 30 cfs
- Offsets 60 cfs of SPW usage
- Augments treated water deliveries to westside service area with CRA water
- Enhances supply reliability in the west area & increases overall system flexibility

Project Scope

Two new pumping stations on
Sepulveda Feeder (30 cfs at each plant)

Project Components

- Pumps, motors, & interconnection piping
- Valve structures
- Mechanical eqpt. for surge protection
- Electrical modifications & switchgear
- Electrical & control buildings
- Sodium hypochlorite system
- New power services from utilities



Sepulveda Pump Station Vault



Venice Pump Station Layout

Progressive Design-Build (PDB)

The project utilizes PDB with two-phase delivery:

- Qualifications-based selection
- Collaborations among Metropolitan, Owner Advisor & Design-Builder (DB)
- **Phase 1:** DB advances design collaboratively with Metropolitan to ~70% complete. DB procures long-lead equipment. Team negotiates a Guaranteed Maximum Price (GMP).
- **Phase 2:** Upon board approval, design is completed & construction starts
 - a. Venice Pump Station*
 - b. Sepulveda slope stabilization & Pump Station*



Progressive Design-Build Benefits

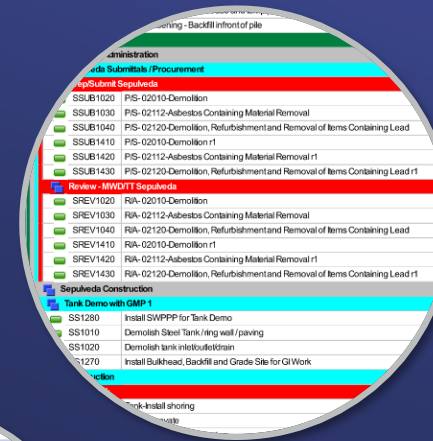
Operations
Extensive Input



Early Equipment
Procurement



Utilities Schedule Coordination
(SCE, LADWP)



Collaborative Value
Engineering

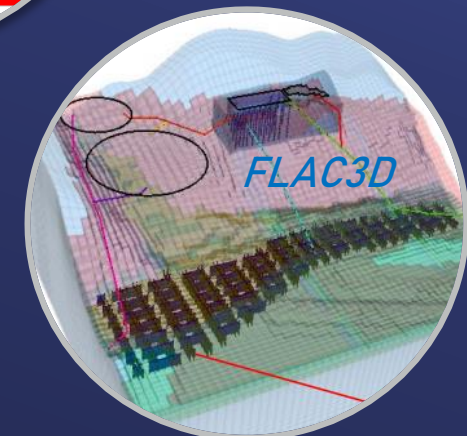
| SUBTOTAL | | | | | |
|--------------|---------------|--------------|---------------|--------------|-----------|
| Burden | Total Labor | Equipment | Perm Mats | Const Mats | |
| 4,556,963.23 | 10,821,141.14 | 6,931,274.55 | 10,739,214.63 | 3,498,994.80 | 22,433.62 |

| Venice Demolition | | | | | |
|-------------------|-----------|-------------|-----------|-----------|------------|
| Base Labor | Burden | Total Labor | Equipment | Perm Mats | Const Mats |
| 51,579.44 | 36,288.39 | 87,867.83 | 76,671.40 | 0.00 | 29,643.1 |
| 51,579.44 | 36,288.39 | 87,867.83 | 76,671.40 | 0.00 | 29,643.2 |

| Manhours | Unit/MH | MH/Unit | \$/MH | Base Labor/MH | |
|----------|---------|----------|----------|---------------|--|
| 840.0000 | 0.0012 | 840.0000 | 278.3029 | 61.4041 | |

| Demo Existing Surface Features | | | | | |
|--------------------------------|-----------|-------------|-----------|-----------|------------|
| Base Labor | Burden | Total Labor | Equipment | Perm Mats | Const Mats |
| 4,654.20 | 10,306.18 | 24,960.38 | 45,215.20 | 0.00 | |
| 54.20 | 10,306.18 | 24,960.38 | 45,215.20 | 0.00 | |

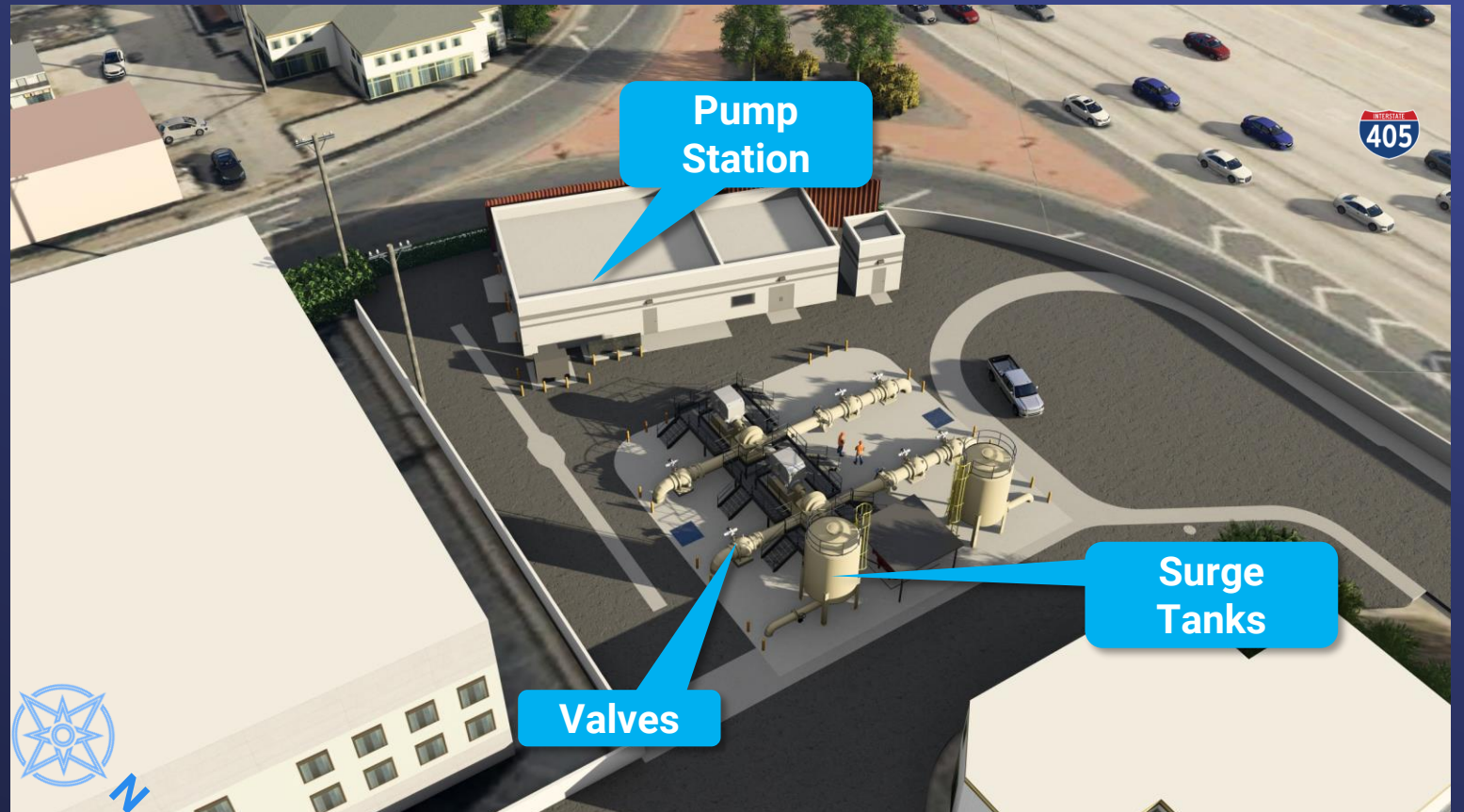
GMP Open Book
Transparency



Separate
Work Packages/GMPs

Scope of Work at Venice site

- Completion of final design & construction of Venice Pump Station
- Coordination with SCE for new service
- Integration with Operations Maximo system for asset management
- Testing & commissioning at Venice Pump Station



Early work at Sepulveda site



Sepulveda Feeder Pump Stations (30 cfs)

Alternatives Considered

- Considered Alternative – Single GMP
 - Allows the project to proceed with full authority to completion of construction but will delay Phase 2 award & may not result in lowest cost
- Selected Alternative – Multiple GMPs
 - Allows Contractor to proceed with construction as design package for each site is completed
 - Allows staff to negotiate better pricing for the remaining work

Sepulveda Feeder Pump Stations (30 cfs)

J. F. Shea Construction Inc. Agreement Amendment

- Design-Builder (DB) consists of J.F. Shea Construction Inc. & Tetra Tech Inc.
- Increase \$52.96 M to a NTE cost of \$103.36 M
- Key Terms:
 - GMP open-book accounting
 - 50/50 sharing of unused funds & contingencies between Metropolitan & Contractor
 - SBE participation level: 8%
 - Covered under Project Labor Agreement

Sepulveda Feeder Pump Stations (30 cfs)

Carollo Engineers Inc. Agreement Amendment

- Owner's Advisor Services:
 - Implement a formal partnering approach to identify & resolve issues
 - Facilitate project meetings & progress reviews
 - Review contractor invoices, payments, technical plans, & schedule
 - Provide advisement to Metropolitan
- New NTE amount: \$3.3 M
 - \$810,000 increase to existing agreement

Sepulveda Feeder Pump Stations (30 cfs)

Parametrix Inc. Agreement Amendment

- Cost Estimating & Scheduling Services
 - Develop independent cost estimates for price reconciliation
 - Provide production-based cost/schedule estimate to support negotiation of next amendment
 - Review contractor open-book cost items
 - Prepare costs forecasts & analyze cash flow
- New NTE amount: \$545,000
 - \$296,000 increase to existing agreement

Allocation of Funds

Sepulveda Feeder Pump Stations Project

Metropolitan Labor

| | |
|--------------|------------|
| Final Design | \$ 926,000 |
|--------------|------------|

| | |
|--|-----------|
| Owner Costs (Proj. Mgmt., Contract Admin., Envir. Support) | 7,658,000 |
|--|-----------|

| | |
|-----------------------------------|-----------|
| Construction Inspection & Support | 8,982,000 |
|-----------------------------------|-----------|

| | |
|--------------------|-----------|
| Force Construction | 1,892,000 |
|--------------------|-----------|

| | |
|--|-----------|
| Submittals Review, Tech. Support, Record Dwgs. | 1,602,000 |
|--|-----------|

Professional/Technical Services

| | |
|------------------------|---------|
| Carollo Engineers Inc. | 810,000 |
|------------------------|---------|

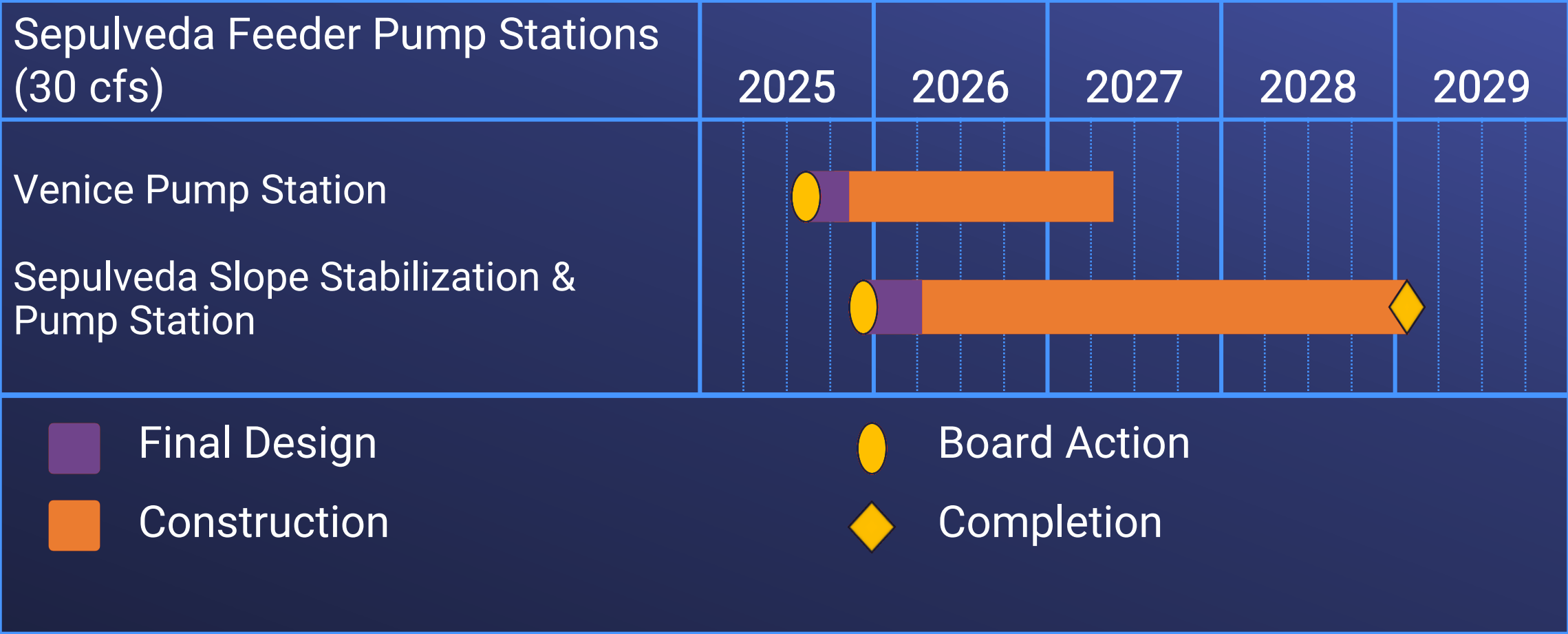
| | |
|------------------|---------|
| Parametrix, Inc. | 296,000 |
|------------------|---------|

| | |
|-----------|------------|
| Contracts | 52,960,000 |
|-----------|------------|

| | |
|------------------|-----------|
| Remaining Budget | 1,874,000 |
|------------------|-----------|

| | |
|--------------|----------------------|
| Total | \$ 77,000,000 |
|--------------|----------------------|

Project Schedule



Board Options

- Option #1
 - a. Authorize an amendment to an existing design-build agreement with J.F. Shea Construction Inc. for design-build services to initiate Phase 2 of the Sepulveda Feeder Pump Stations project, including an increase of \$52.96 million for a new not-to-exceed amount of \$103.36 million;
 - b. Authorize an increase of \$810,000 to an existing agreement with Carollo Engineers Inc. for a new not-to-exceed amount of \$3.3 million to serve as the owner's advisor through the Phase 2 design-build agreement; and
 - c. Authorize an increase of \$296,000 to an existing agreement with Parametrix Inc. for a new not-to-exceed amount of \$545,000 for cost estimating and scheduling services through Phase 2.
- Option #2
 - Do not authorize Phase 2 of the project at this time.

Staff Recommendation

- Option #1

