



One Water and Stewardship Committee

Update on WSDM

Item 6b
April 8, 2024

Item 6b

Update on WSDM

Subject

Update on Oral Report on Water Surplus and Drought Management

Purpose

Provide updated supply and hydrologic information

SWP Update

SWP Table A Allocation Increases to 30%

- SWP Allocation increased from 15% to 30%
 - Update reflects hydrologic conditions as of March 1
 - Incorporates improved conditions from February storm events
- Additional increase to the SWP Allocation expected
 - April allocation update will include March storm events and the continued improvements in snowpack levels
 - Regulatory obligations continue to impact availability of supplies

Phillips Station (February 29, 2024)



Credit: DWR

San Luis Reservoir (February 16, 2024)

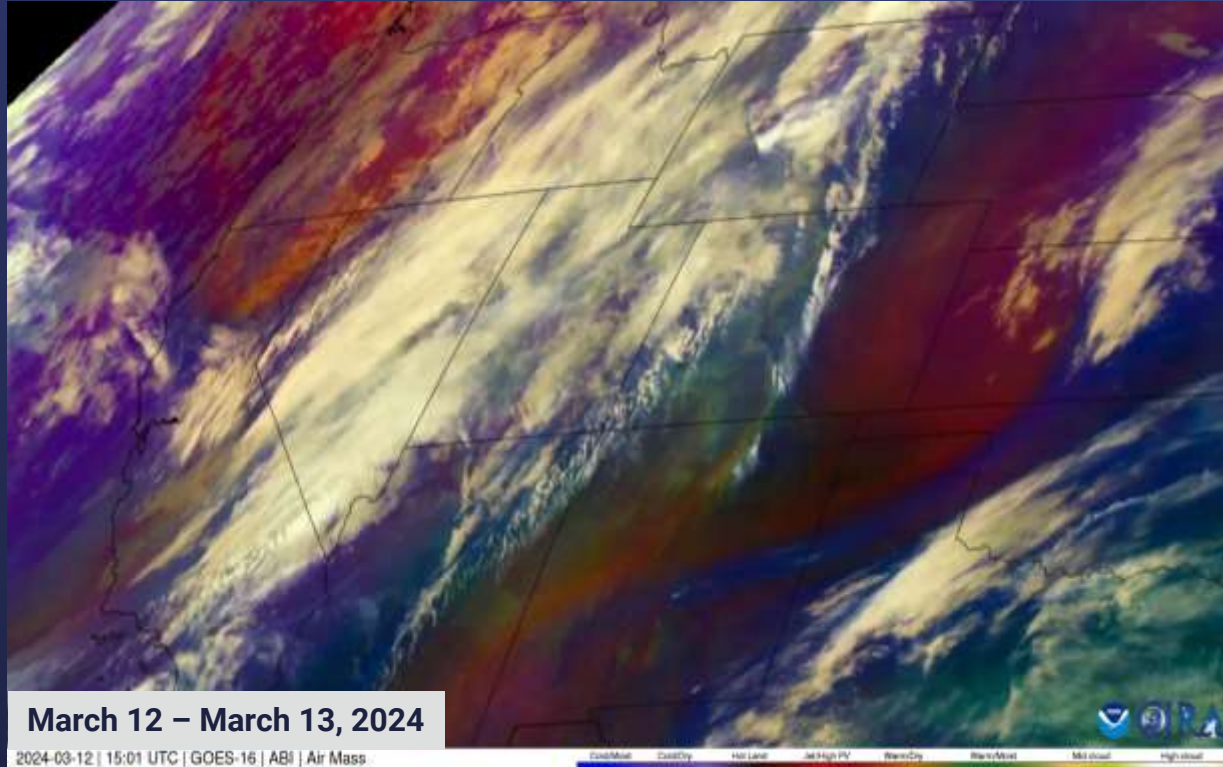


Credit: DWR

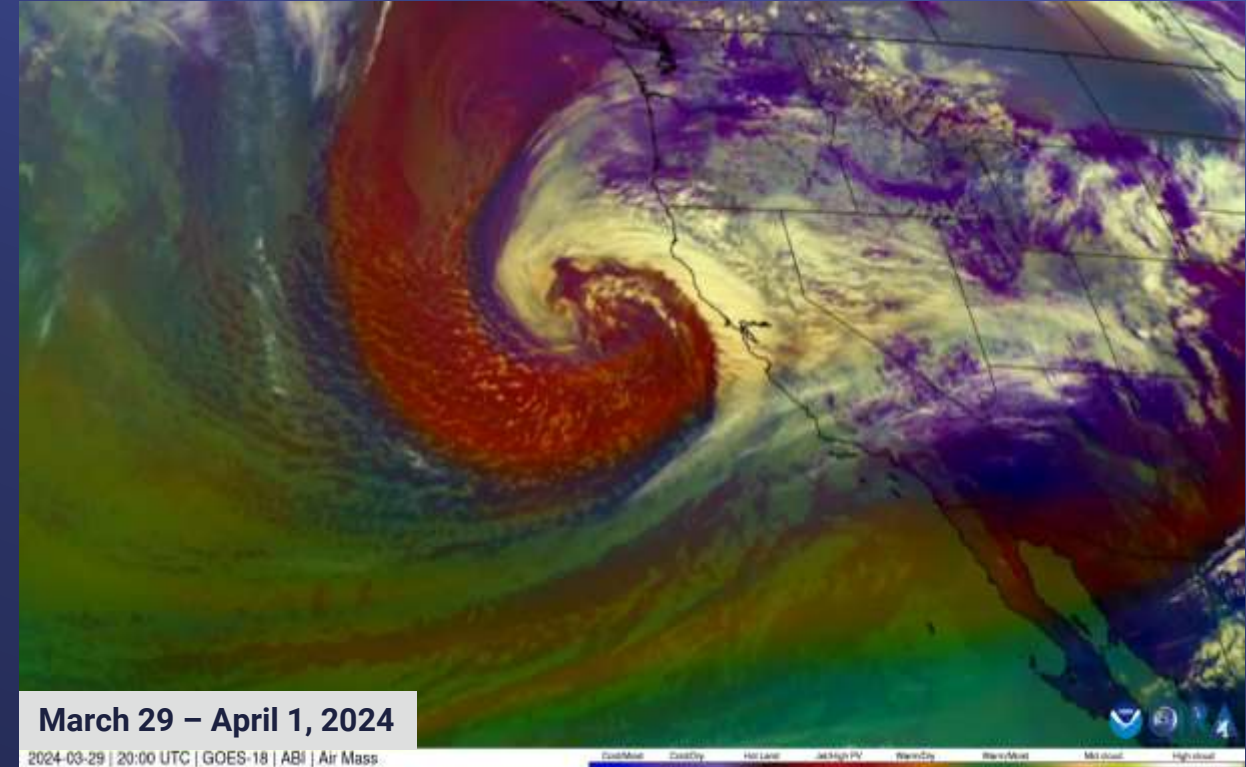
Hydrologic Conditions Update



Storms Continue to Impact Both Imported Supply Watersheds

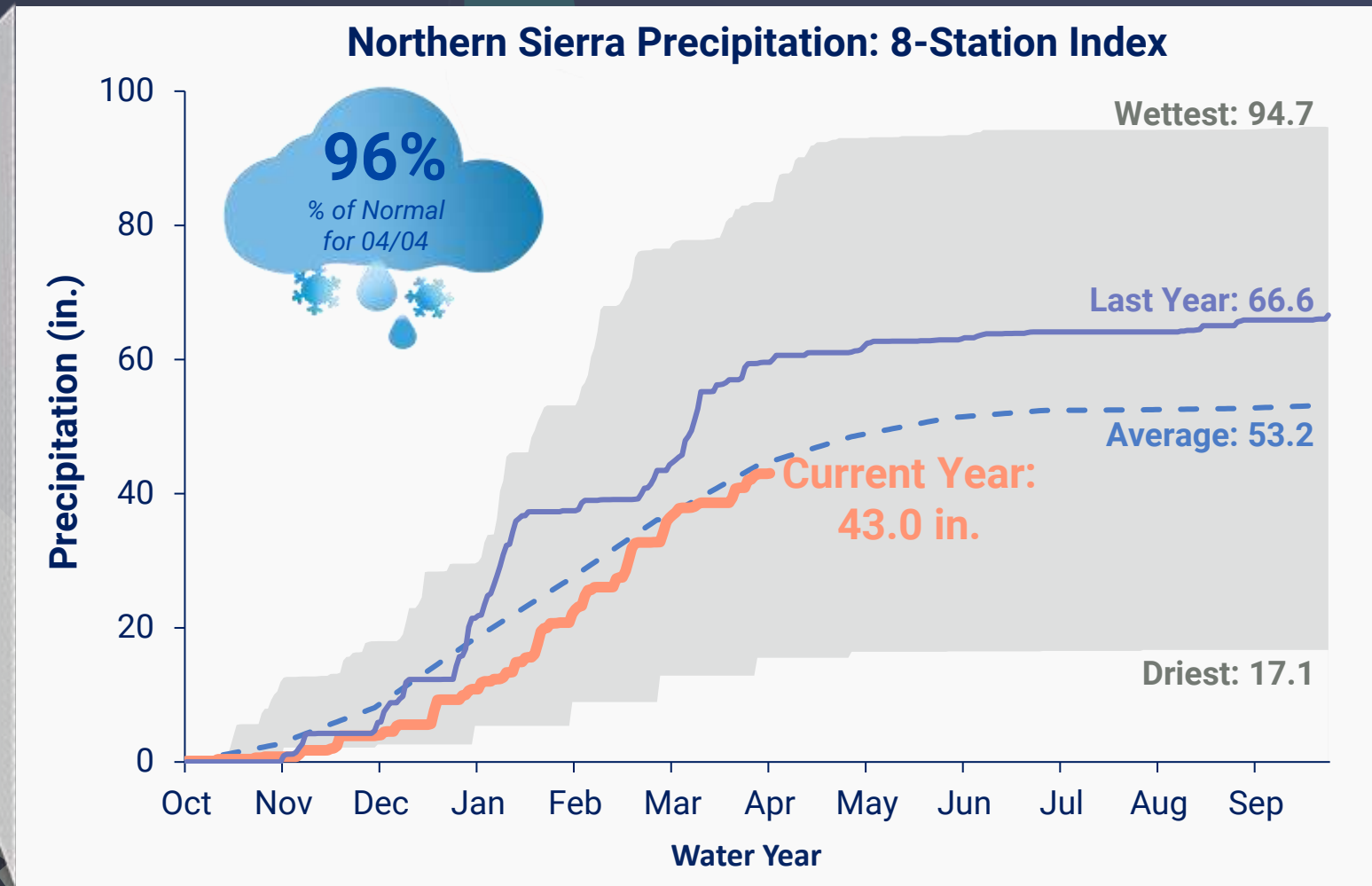


***Mid-March storm hits
Upper Colorado River Basin***



***Late March storms make landfall in
Northern Sierra & Upper Colorado River Basin***

Near-Normal Precipitation for Northern Sierra



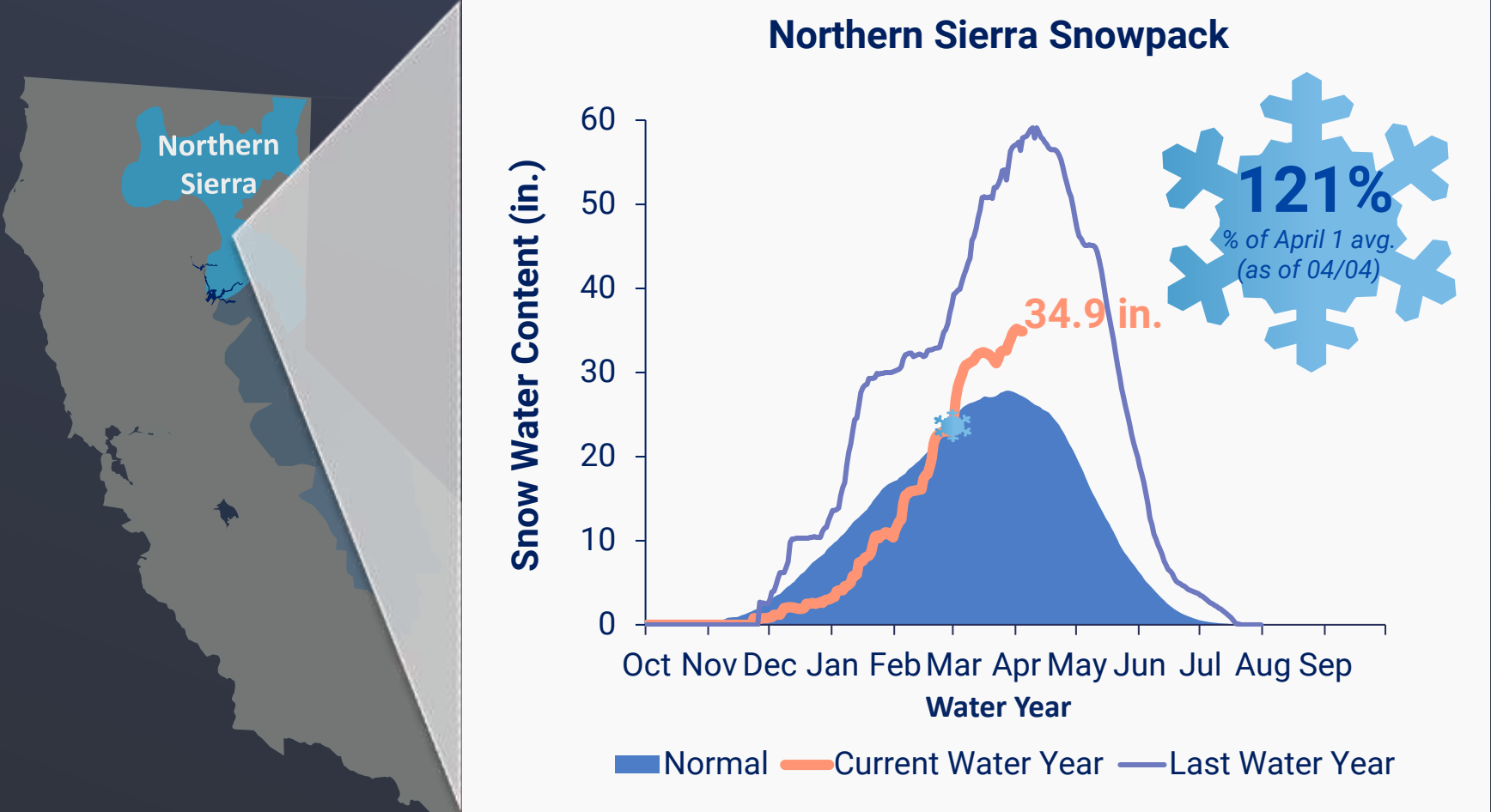
April 8, 2024

One Water and Stewardship Committee

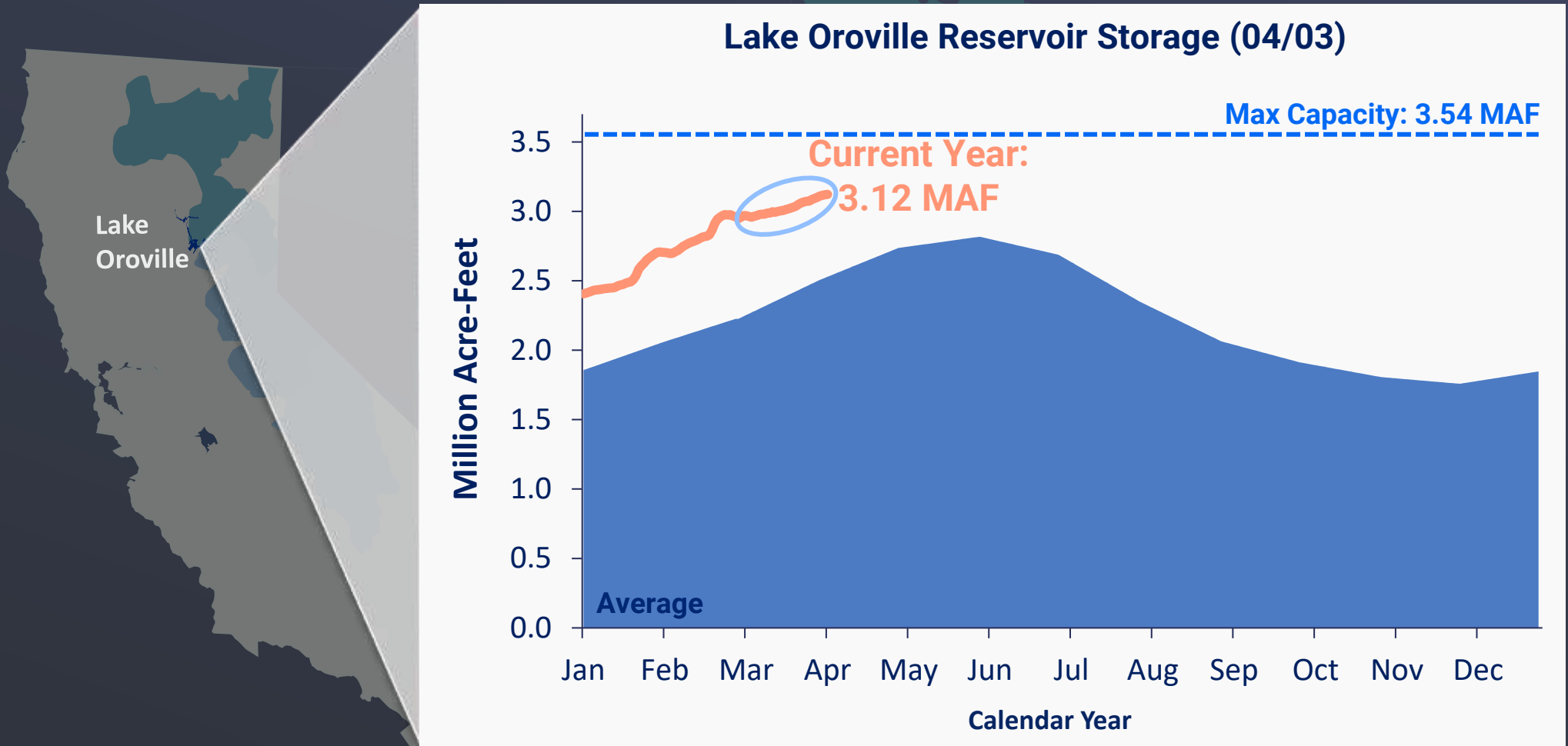
Item #6b Slide 6

Note: Images not drawn to scale.

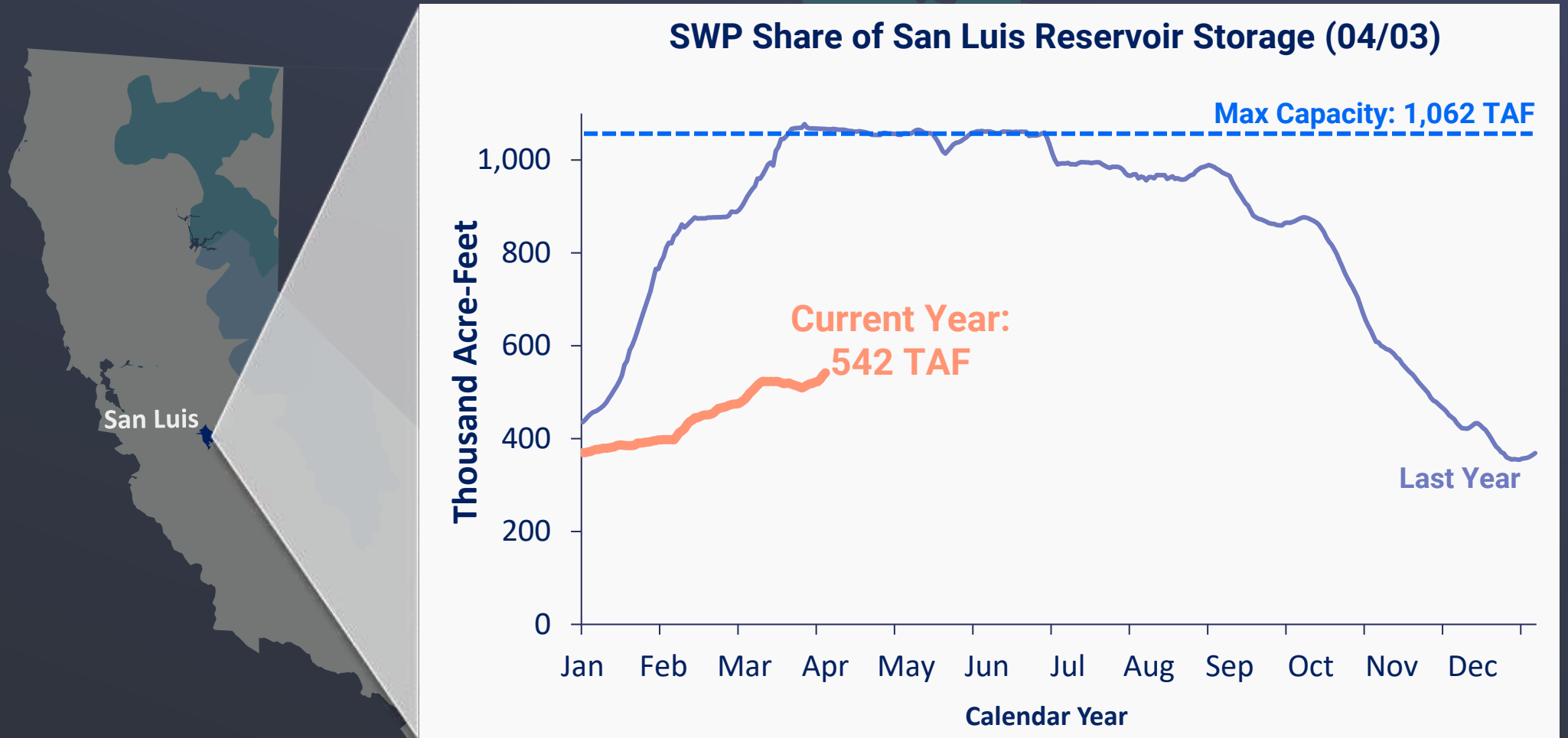
February & March Storms Boost Snowpack in Northern Sierra



Flood Control Releases Continue as Lake Oroville's Levels Rise



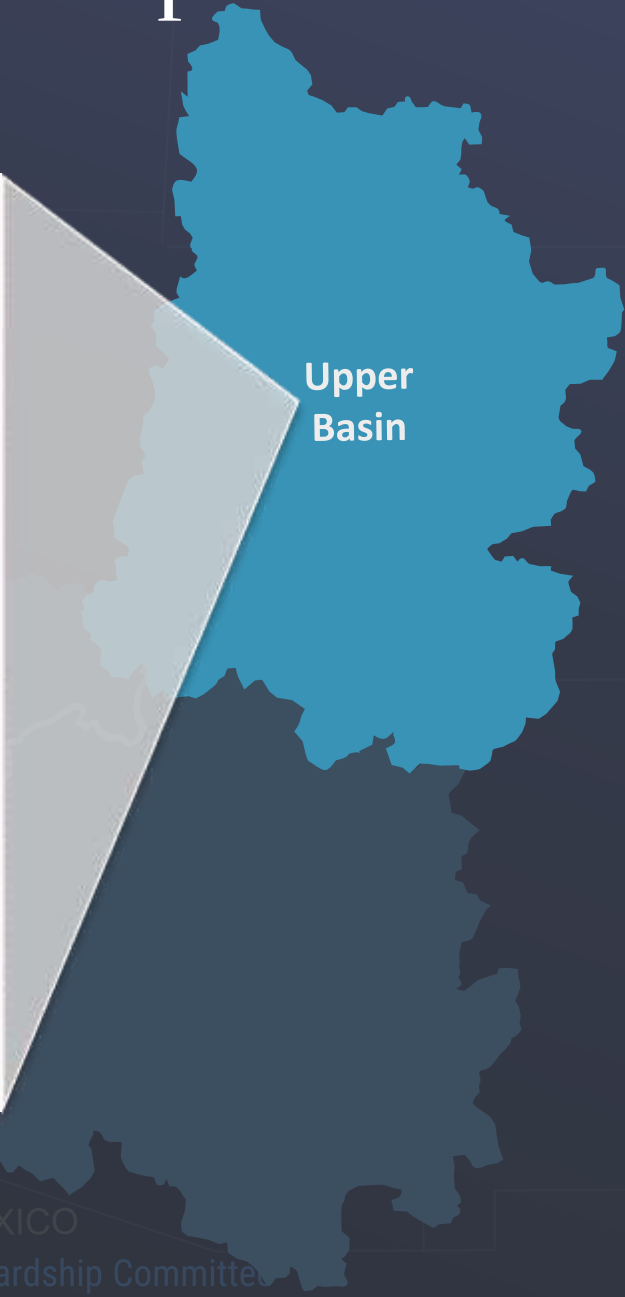
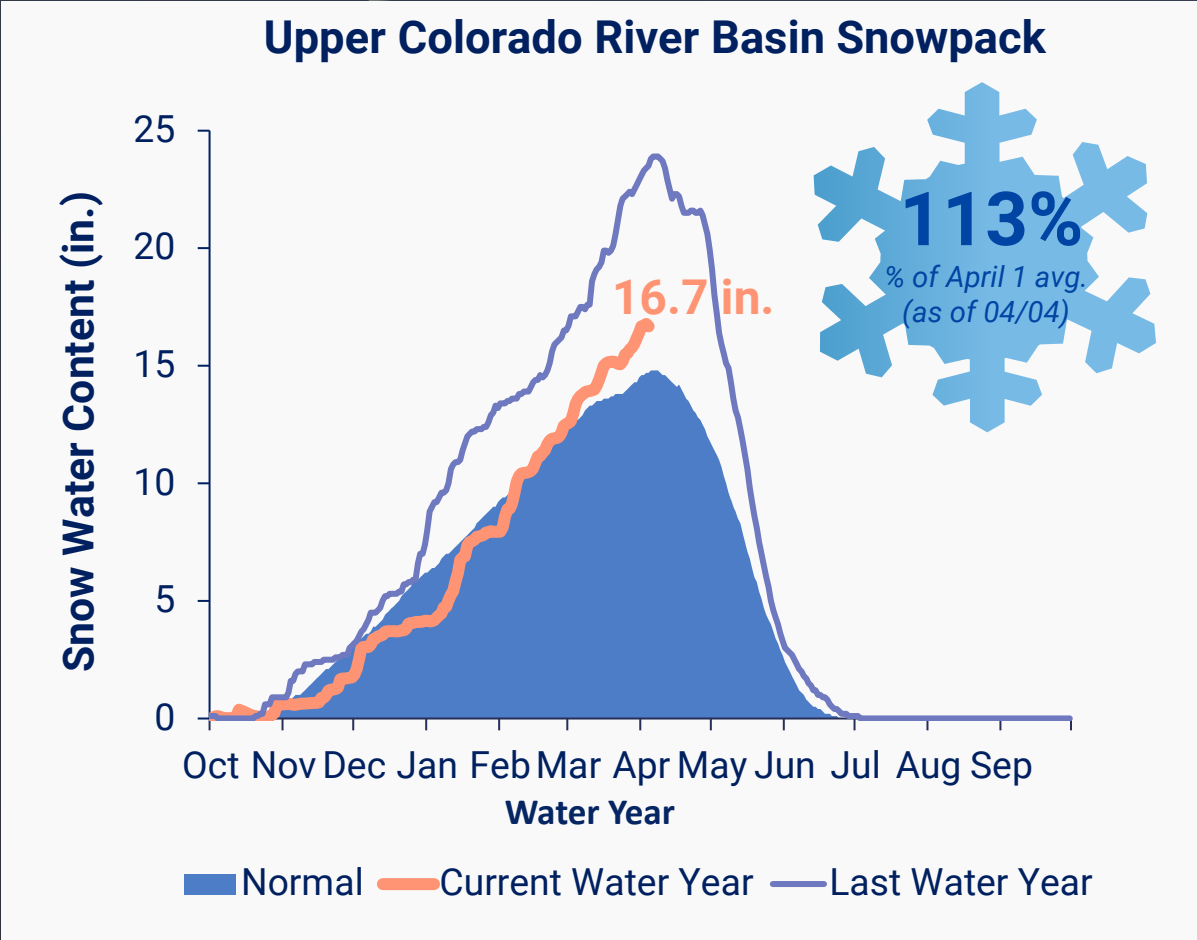
Reduced Exports Impact SWP Share of San Luis Storage



April 8, 2024

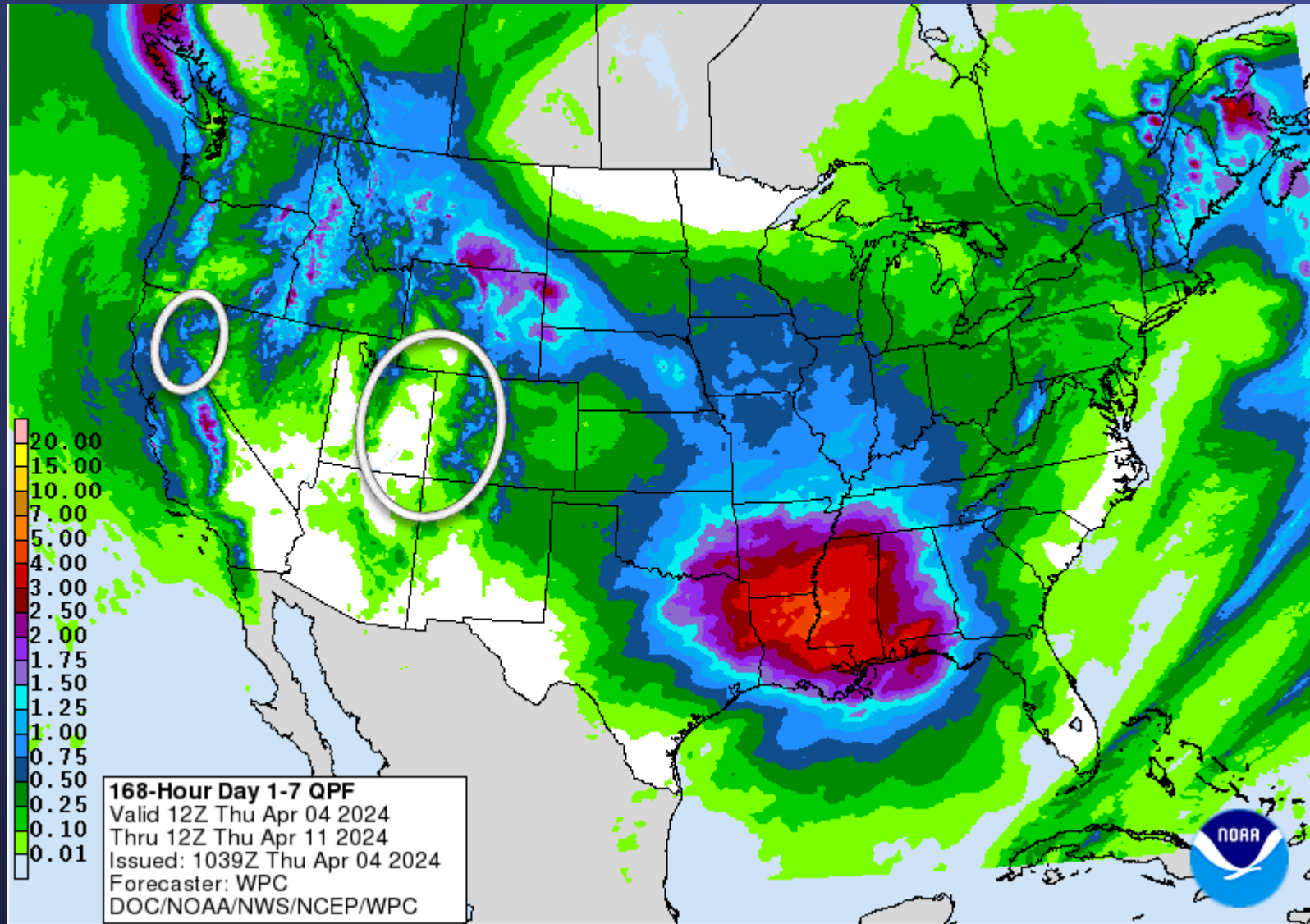
Note: Images not drawn to scale.

Upper Colorado River Basin Snowpack Continuing to Climb



Additional Precipitation in the Forecast

April 4 – April 11



2024 Water Surplus & Drought Management

April 8, 2024

One Water and Stewardship Committee

Item #6b Slide 12

2024 Water Supply/Demand Balance: **Regional View**

