



THE METROPOLITAN WATER DISTRICT
OF SOUTHERN CALIFORNIA

Board Report

Office of Safety, Security & Protection

• **Safety, Security, and Protection Monthly Activities for April 2024**

Summary

This monthly report for the Safety, Security, and Protection Group provides a summary of activities for April 2024 in the following key areas:

- Security and Emergency Management
 - Security and Emergency Response
 - Emergency Management Program Update
- Safety, Regulatory, and Training (SRT)
 - Health & Safety Programs
 - Environmental Programs
 - Apprenticeship Programs
 - Safety and Technical Training Programs
 - Site Support

Purpose

Informational by the Safety, Security, and Protection Group on a summary of key activities for the month of April 2024.

Attachments

Attachment 1: Detailed Report – Safety, Security, and Protection Monthly Activities for April 2024

Office of Safety, Security & Protection

Key Activities Report for April 2024

Project Highlights

Security and Emergency Management

Security and Emergency Response

Metropolitan's facilities hold critical infrastructure designation by the Department of Homeland Security (DHS), affirming the vital role they play in national security. Our Security and Emergency Management Unit maintains a robust partnership with the Cyber and Infrastructure Security Agency (CISA) within DHS, facilitated by Protective Security Advisors (PSAs) assigned to Region 9, covering the Western US and Hawaii. These PSAs collaborate closely with our security staff to conduct comprehensive assessments of our facilities' security posture, address emerging threats, and foster relationships with local, state, and federal agencies, including first responders, partner utilities, policymakers, and intelligence analysts. This partnership serves as a cornerstone for evaluating and enhancing our security standards, providing valuable recommendations derived from cross-sector comparisons.

In April, we were honored to host Dr. Michael Stone, Director of the Private Sector Office within the Department of Homeland Security HQ, during his visit to Metropolitan. Dr. Stone's office plays a crucial role in fostering strategic communications with the private sector, identifying shared challenges, and developing sustainable partnerships within critical infrastructure sectors. During his visit, Dr. Stone commended the longstanding and fruitful collaboration between DHS and Metropolitan, highlighting the dedication of our security staff in fostering partnerships across various critical infrastructure sectors. He pledged to further strengthen the relationship with his office, underscoring the importance of ongoing collaboration and coordination to address evolving security challenges effectively.

Moving forward, we remain committed to nurturing and enhancing our partnerships with DHS and other key stakeholders to safeguard Metropolitan's critical infrastructure and ensure the resilience of our operations.



Dr. Michael Stone, DHS's Director to the Private Sector, in his first visit to Metropolitan promising to bolster the partnership with the federal agency

Office of Safety, Security & Protection

Security and Emergency Response

Water Information Sharing and Analysis Center (WaterISAC) is an organization that focuses on improving the cybersecurity and resilience of water and wastewater systems in the United States. It provides its members (which include water utilities) with threat intelligence, cybersecurity best practices, training, and resources to help them protect their critical infrastructure from both cyber and physical security threats.

Metropolitan's Security Management Unit (SMU) received the great honor of being asked to join WaterISAC's new Physical Security Advisory Committee as a standing committee member. The new committee meets each month to discuss physical security issues and opportunities for the water sector, with members actively providing input to inform the development of reports, presentations, exercises, and more. In addition, the Physical Security Advisory Committee will provide a forum for members to engage with one another, to include shared lessons learned and security best practices.



**Metropolitan SMU—proud committee member of
WaterISAC's new Physical Security Advisory Committee**

Emergency Management Program Update

Work on updating Metropolitan's Dam Emergency Action Plans (EAPs) continued this month. Staff ran a required call-down drill and updated the Diemer Dam EAP, which was then shared with stakeholders and the California Office of Emergency Services. This month's staff training on these EAPs included an exercise of the Diamond Valley Lake EAP with response staff.

Outreach to local Fire Departments also continued with exercises at the Jensen Plant with representatives from the Los Angeles City and County Fire Department, and one at the Weymouth Plant with representatives from the Los Angeles County Fire Department.

Finally, the Metropolitan Emergency Operations Center (EOC) and Western Conveyance and Distribution Incident Command Post (ICP) were activated briefly this month in response to a possible leak on the Santa Monica Feeder. After further assessment from field crews, it was determined there was no leak on the feeder, and the EOC and ICP were de-activated and returned to normal operations.

Office of Safety, Security & Protection

Project Highlights

Safety, Regulatory, and Training

SRT Health & Safety Programs

National Safety Council (NSC) Initiative

NSC met with the executive managers to provide highlights and feedback received from all the focused group discussions. A proposed charter for the Executive Safety Committee and safety culture improvement opportunities were discussed during the meeting. This committee will demonstrate the executive leadership support of safety and will reinforce the importance of chain of command when finding safety solutions. NSC will continue working with SRT to launch the newly formed Executive Safety Committee.


Pipeline Safety

Staff provided training on the use of the new Blackline G7c air monitors used to test the atmosphere inside confined spaces, such as tanks, substructures, and pipelines before entry. The Safety Talk for Guidelines When Entering Pipelines or Tunnels was updated and posted on the IntraMet for employees to review before entering pipelines.

Technical guidance was provided to Engineering for Freda Siphon leak repairs during CRA shutdown. Suspect asbestos-containing materials were discovered on the interior of the siphon, which halted the completion of all planned Weko seal installations. Metropolitan's asbestos consultant conducted a comprehensive survey to identify each repair location containing asbestos for the future 2025 CRA shutdown. Staff will continue to partner with Engineering to establish procedures for installation of Weko seals without disturbing existing asbestos material.

MWD Safety Talk

Guidelines for Engineering Services Group (ESG) and non-WSO Staff Entering Pipelines or Tunnels



Shutdowns require involvement from many staff outside WSO. ESG and other non-WSO staff is responsible for inspections and evaluations (e.g., corrosion, survey, seismic). This Safety Talk provides requirements, guidelines, and steps to follow when entering pipelines or tunnels.

PRIOR TO SHUTDOWN

All entries into the pipeline or other clearance zones must be planned and approved in advance. Whenever possible, the entry request must be included in the shutdown plan and each entry must list the personnel involved, the purpose of the entry, access points, expected duration, and specific tasks.

Designate a lead person on your team to coordinate, participate, and attend the Shutdown Planning meetings to discuss the scope of your support work. The lead person works closely with the Shutdown Project Manager (SPM) to clarify roles and responsibilities and requirements for your work, including:

- **Staffing support.** Determine who, on the topside-support crew, maintains and relocates blowers; sets traffic controls; tests and documents atmospheric readings inside confined spaces and tunnels; provides transportation, and maintains entry and exit logs into the pipeline. Designate a topside person responsible for checking on the support team's status inside the pipeline regularly.
- **Qualified escort.** Designate a "qualified escort" to be in charge of each team entering the pipeline. A qualified escort shall have sufficient practical experience (as determined by their manager) to be in responsible charge of the team inside the pipeline. The team members follow directions from the qualified escort and maintain contact with him/her while inside the pipeline.
- **Work schedule and work location.** Establish a staffing schedule for the team. Use station numbers and markers to identify critical locations for staging/meeting areas, blower set-ups, pipeline access points (i.e., entry, exit and checkpoints).
- **Tunnel or pipeline procedures.** Review protocols for lockout/blockout, atmospheric testing, and pipeline entry and exit. Review emergency procedures, roles and responsibilities for the crew inside the pipeline and topside of the pipeline. Communications between team inside the pipeline and topside crew must be clearly defined in the shutdown plan.

**Metropolitan Safety Talk for
Entering Pipelines and Tunnels**



Freda Siphon Weko Seal Installation

Office of Safety, Security & Protection

SRT Environmental Programs

Advanced Clean Fleets Regulatory Compliance

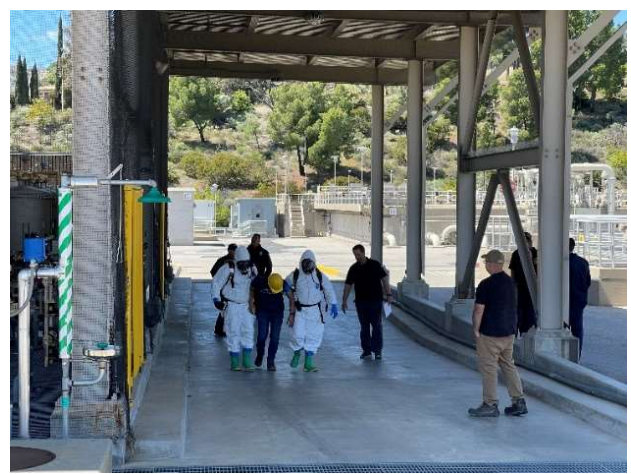
The initial compliance report was submitted for Metropolitan's 571 medium- and heavy-duty (MD/HD) on-road vehicles subject to the California Air Resources Board Advanced Clean Fleets (ACF) Regulation. The current compliance pathway selected for Metropolitan's fleet is the Zero Emission Vehicle (ZEV) Purchase Schedule, which requires new purchases of MD/HD vehicles to be 50 percent ZEV during 2024–2026, and 100 percent beginning in 2027. The nine ZEVs acquired last year can be used to offset future purchases of critical gasoline/diesel vehicles needed to maintain operational reliability. Staff will continue to actively participate in CARB's implementation of the various ACF provisions, including the purchase requirements, ZEV availability, and possible exemptions.



The purchase of Electric Ford Lightning (left) could be used to offset the purchase of diesel truck (right)

Emergency Trainings and Drills

SRT Environmental coordinated chemical responder/Incident Command (IC) annual refresher trainings, drills, tours at Weymouth and Jensen with the Los Angeles County Fire Department (LACFD) and the City of Los Angeles Fire Department (LAFD), respectively. The tabletop trainings involved simulated chlorine and aqua ammonia leaks and injuries. Both fire agencies were appreciative of the invitations and look forward to future drills and plant tours.



Jensen exercise drill to simulate chlorine leak and injury

Office of Safety, Security & Protection

SRT Apprenticeship Programs

The SRT Apprenticeship Programs prepare apprentices to become qualified mechanics and electricians responsible for maintaining Metropolitan's water treatment and distribution systems. This month, the Class of 2027 mechanical apprentices visited Diamond Valley Lake inlet/outlet tower where a subject matter expert taught apprentices on the use of blueprints and schematics to identify and match Metropolitan specifications to facility components.

The Class of 2027 electrical apprentices visited Metropolitan hydroelectric plant and pressure control structure to study battery maintenance, inspection, and equipment operation. They learned how to conduct visual inspections, test equipment, take readings, interpret the readings, troubleshoot, and correct potential problems.

Lastly, staff facilitated the Civil Treatment Workplace Pilot Training in collaboration with Diversity, Equity, and Inclusion and Human Resources. The General Manager and Chief Diversity, Equity, and Inclusion Officer kicked off the meeting with opening remarks. Staff also partnered with External Affairs to facilitate the Colorado River Board meeting at the Apprenticeship Training Center.



Mechanics at the Diamond Valley Lake



General Manager at Civil Treatment Workplace Training

Office of Safety, Security & Protection

SRT Safety and Technical Training Programs

SRT Safety and Technical Training staff proctored electrical switching and valving practical exams to certify trainees in the System Operating Orders Manual (SOOM) Advanced Electrical Switching and Advanced Mechanical Valving programs. The practical assessments require trainees to write an outage request, a set of switching and/or valving instructions, and perform high voltage switching and/or valving in accordance with Metropolitan policy and the SOOM.



Staff performing High voltage switching practical operations (left) and reporting the completion of switching (right) at Coyote Creek HEP.

SRT Site Support

The CRA Shutdown for tunnel cleaning is a recurrent preventive maintenance shutdown that helps preserve vital Metropolitan tunnels to deliver water from Colorado River to member agencies. Before the start of the shutdown, a CalOSHA inspector was onsite to review Metropolitan's safety, ventilation, and evacuation plans; inspect the blowers and atmospheric gas monitors; verify crane and operator certifications; and check emergency supplies. There were no findings or correction from the CalOSHA inspector. In addition, SRT staff conducted employee training on the use of emergency equipment including, self-rescuers for immediate evacuation in case of fire and stokes basket for extractions of injured employee, if needed.

Throughout the duration of the shutdown, our staff served as the California Certified Tunnel Safety Representatives and Gas Testers, as required by CalOSHA. They monitored the work onsite and ensured that acceptable conditions inside the tunnels were met throughout the duration of the cleaning. Staff continuously and reliably provided safety support, resulting in the successful completion of the shutdown with zero injuries or incidents.



CRA ventilation blowers (left), CalOSHA pre-job meeting (center), and training on the use of Stoke's basket (right)