



Finance and Asset Management Committee

# Authorize Bay Delta Lease Amendments

Item 8-2

February 11, 2025

# Overview of Lease Amendments

## Subject

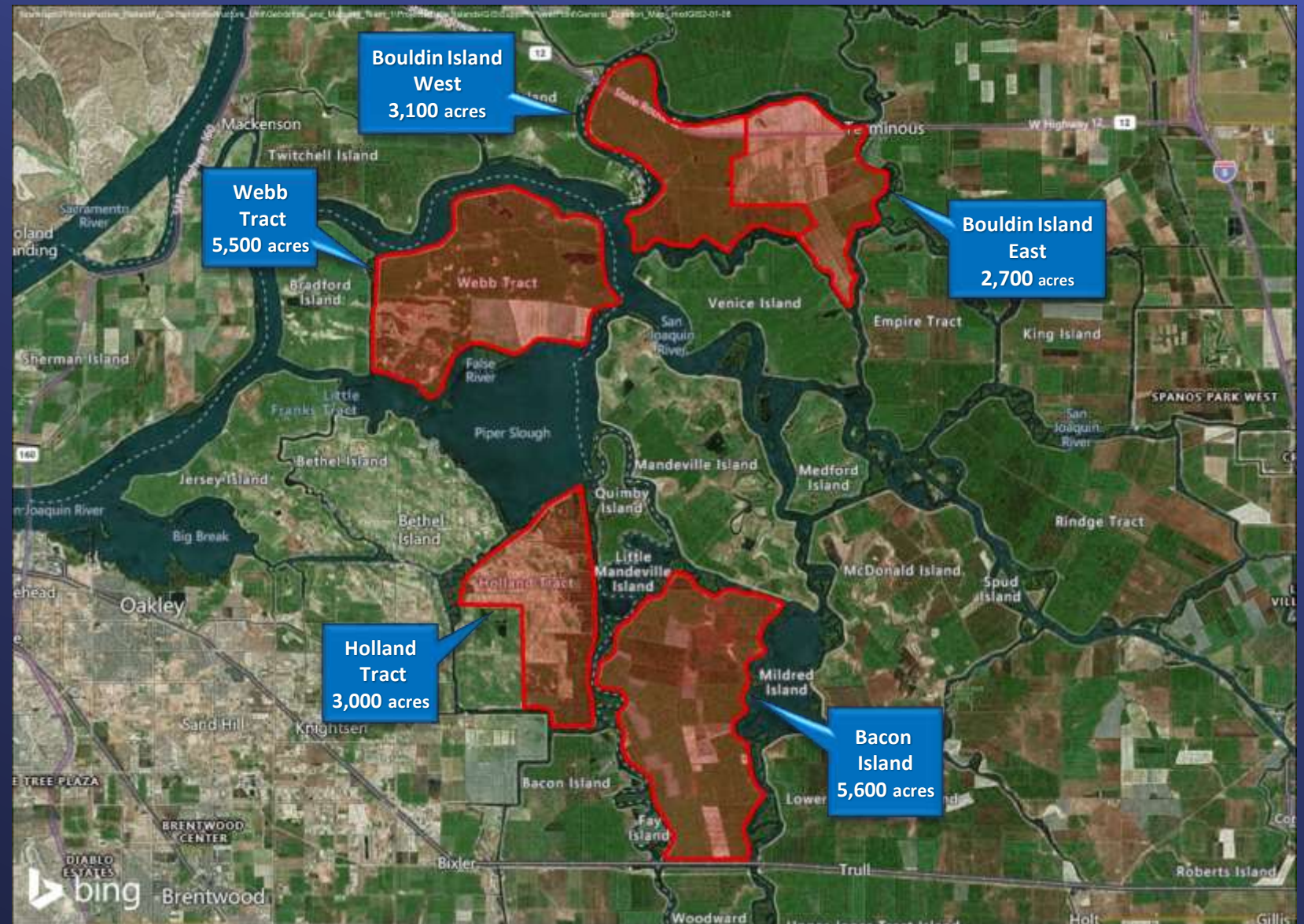
- Authorize lease amendments with existing tenants on Bacon and Bouldin Islands.

## Purpose

- Extend term up to two years and increase the rent.



# Site Map



## Bay-Delta Land Use Strategy

- Water Supply Reliability
- Reduce Subsidence
- Decrease Levee Risks
- Positive Cash flow
- Reduce greenhouse gas emissions
- Ecosystem Restoration
- Carbon Sequestration

Bouldin  
Island-East  
Sierra Cattle

- Current Lease: 2/1/20 to 1/31/25
- Gross Acres: 2,700
- Farmed Acres: 2,241
- Crops: Corn, Alfalfa, Wheat
- Not Interested in Rice Farming

Bouldin  
Island-West  
Dinelli Farms

- Current Lease: 2/1/20 to 1/31/25
- Gross Acres: 3,100
- Farmed Acres: 2,009
- Crops: Corn, Wheat, Oats, Safflower
- Not Interested in Rice Farming

# Bacon Island

## D&L Farms

- Current Lease: 2/1/20 to 1/31/25
- Gross Acres: 5,600
- Farmed Acres: 4,807
- Crops: Corn, Wheat, Alfalfa
- Not Interested in Rice Farming Terms

