



One Water and Adaptation Committee

Bay-Delta Science Summary Update

Item 6a
August 18, 2025

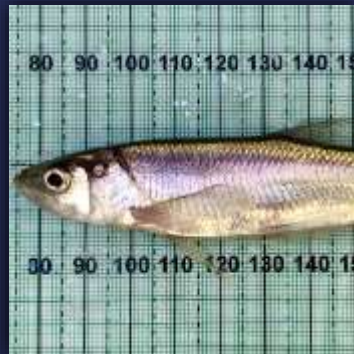
Item 6a
Bay-Delta
Science
Summary
Update

Subject
Bay-Delta Initiatives Annual Science Report

Purpose
Provide an update on recent Metropolitan Bay-Delta Science Program achievements and ongoing projects

Importance of Metropolitan's Bay-Delta Science Efforts

- Consistent with the Board's Bay-Delta policies
- Supports policy & management actions
- Fosters collaborative partnerships statewide
- Improves water supply reliability of SWP



Engagement with multiple agencies and interested parties is foundational to MWD's science program

Bay-Delta Science Collaboration



Bay-Delta Initiatives Science Update



Science Highlights

- Reorientating to Recovery of Salmon
- Multi-benefit Landscape Restoration on Webb Tract
- COEQWAL
- Delta Smelt
 - Preservation Project
 - Summer/Fall Actions 2025
- Future Studies and Collaborations

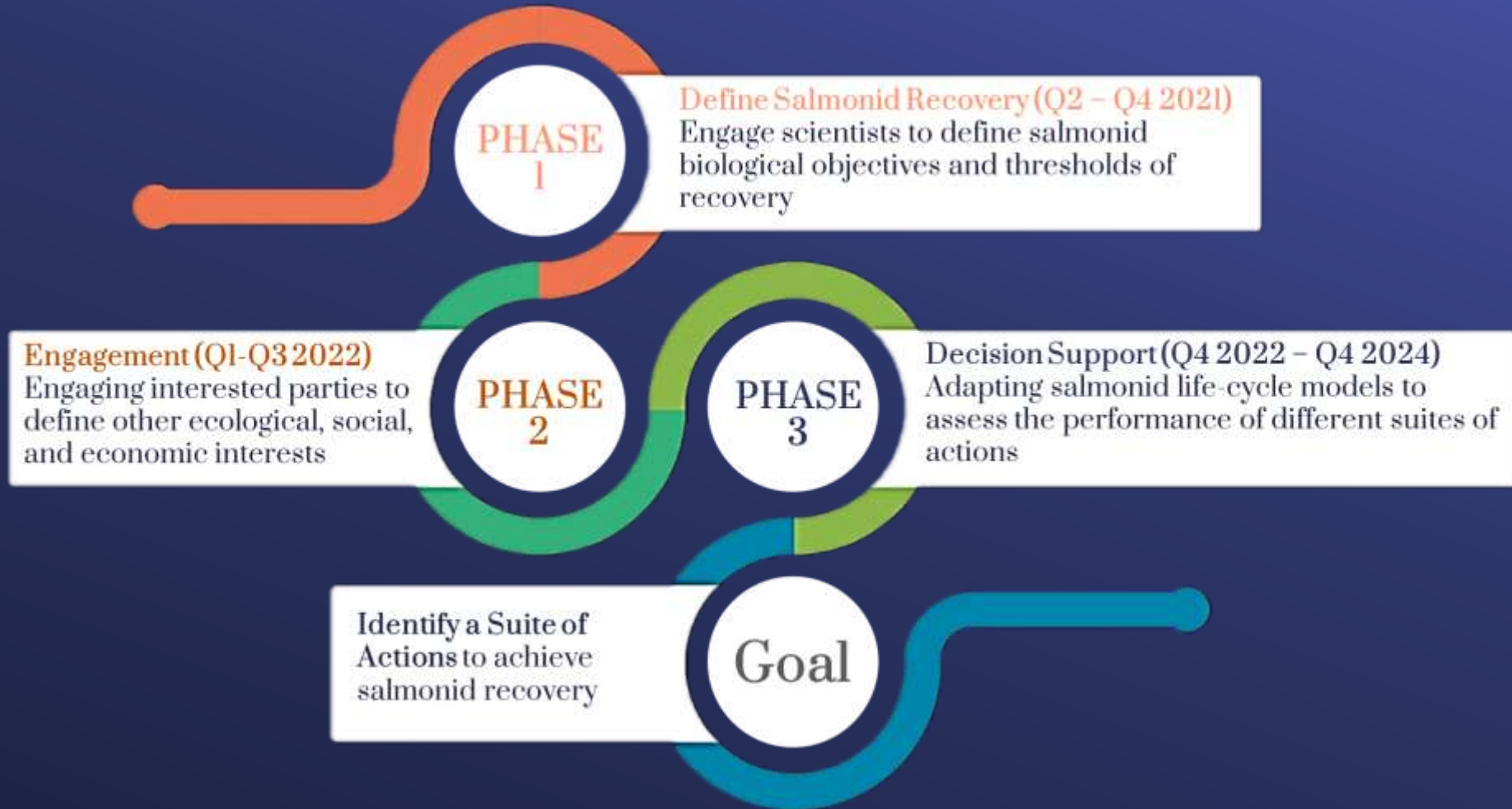
2024 Research Budget

Funding Received and Spent

- Grants Received - \$22M
 - Science - \$1.12M
 - Webb Tract - \$20.9M
- MWD funded - \$2.5M
 - Cash contribution - \$2.0M
 - In-kind - \$500K
- MWD funds were leveraged with funding from others to achieve over \$8M in research

Collaborative process to identify projects for recovery of Chinook Salmon

Reorienting to Recovery

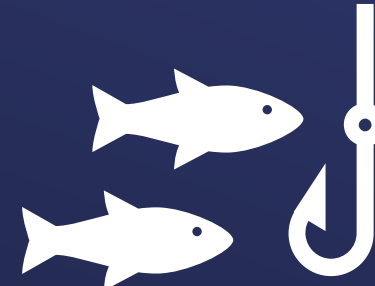


Four variables were identified as the most impactful towards Chinook Salmon recovery

Reorienting to Recovery



Habitat



Harvest



Hydrology



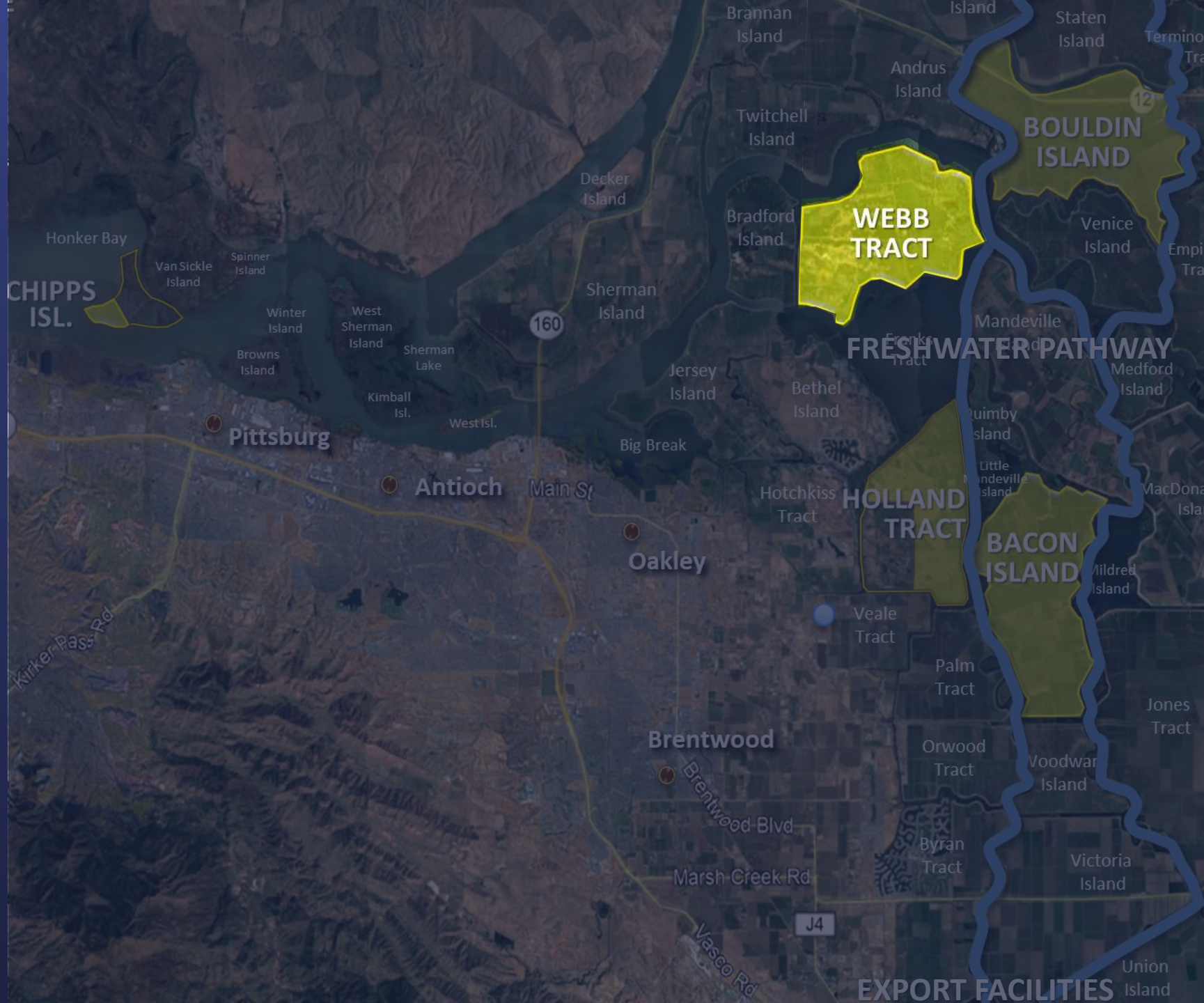
Hatcheries

R2R was a collaborative value setting process, collecting feedback from over 110 entities and implemented comprehensive life cycle modeling

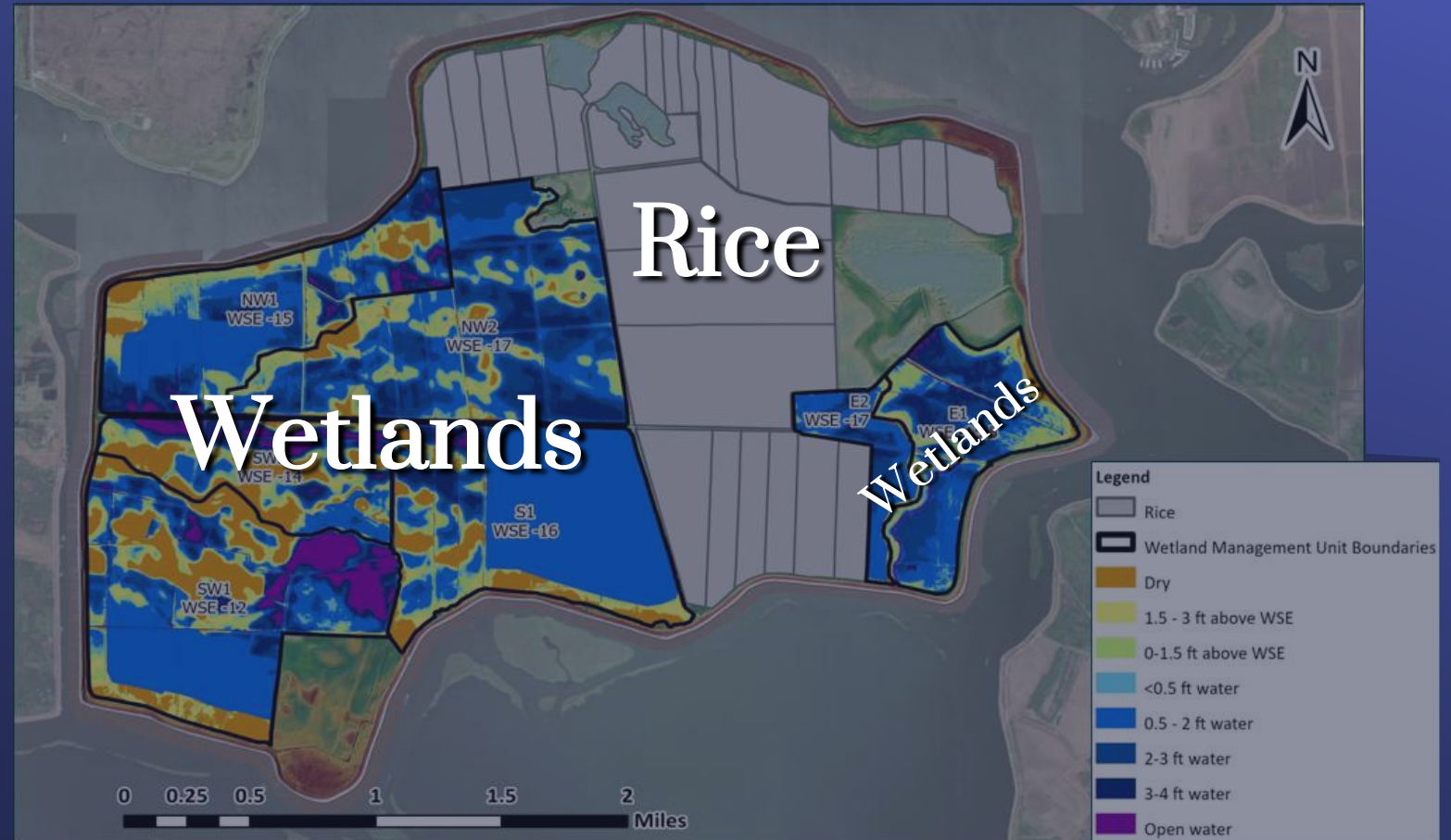
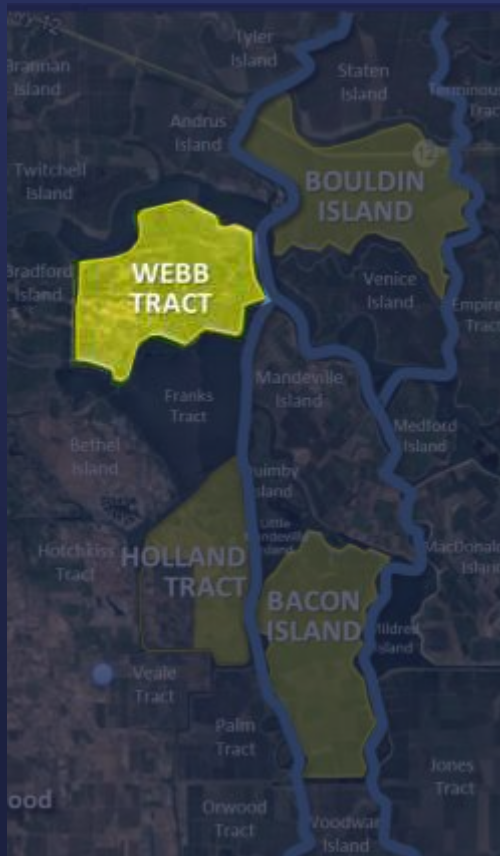
Multi-benefit Landscape Restoration on Webb Tract

\$20.9M grant
awarded to
Metropolitan
by the Delta
Conservancy

August 18, 2025



Multi-benefit Landscape Restoration on Webb Tract



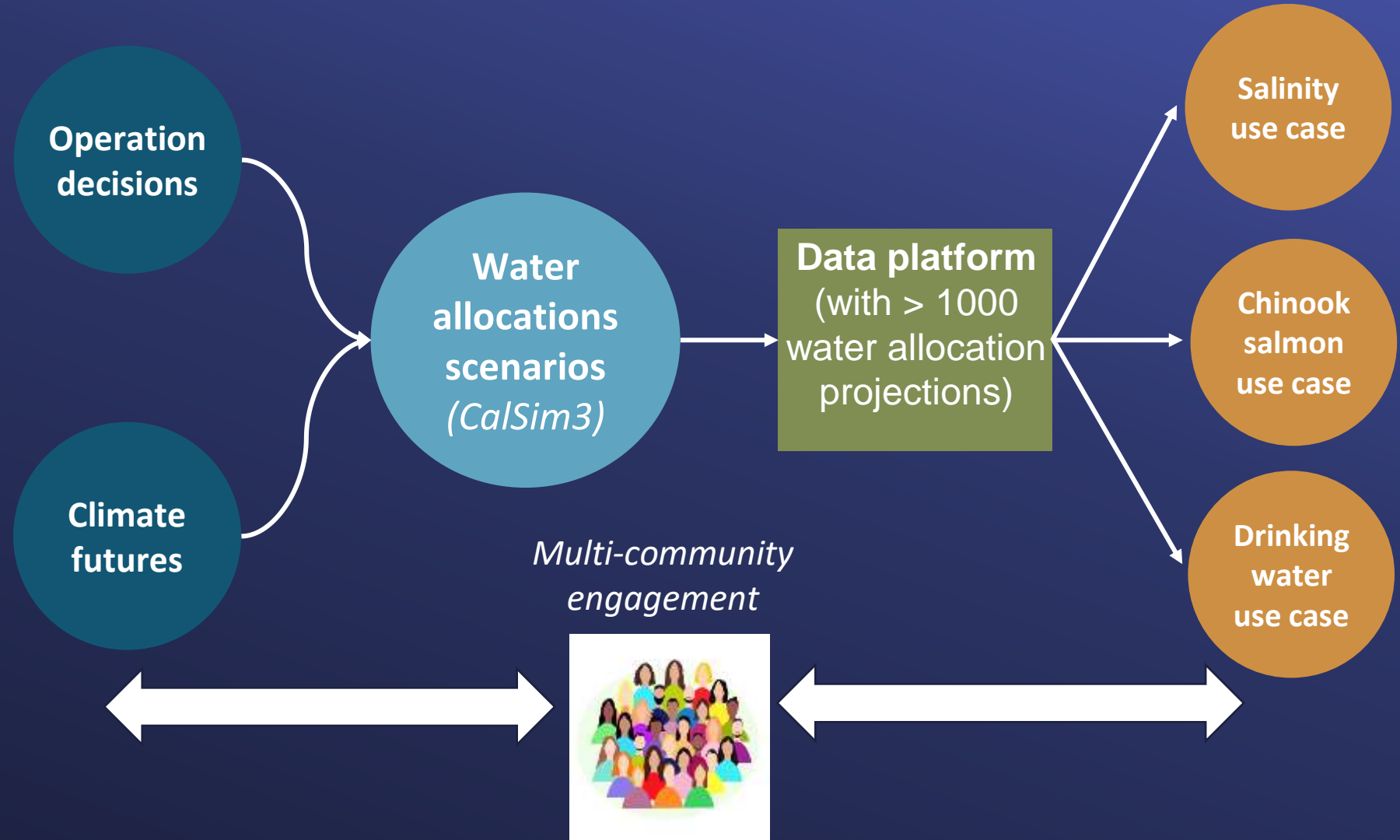
Benefits: sustainable agriculture development, GHG emissions reduction, habitat restoration and halting/reversal of subsidence

COEQWAL

Collaboratory for
Equitable
Water
Allocations

Co-Designing Equitable Water Solutions

To manage water sustainably, equitably, and resiliently



Delta Smelt Preservation Project Objectives

1. Promote recovery of Delta Smelt

- CVP/SWP Permits Require Supplementation of 500K by 2030
- ↑ survival
- ↑ reproduction

2. Improve water supply reliability and permit compliance

- Permit protections for smelt reduce exports by 390 TAF/year on average

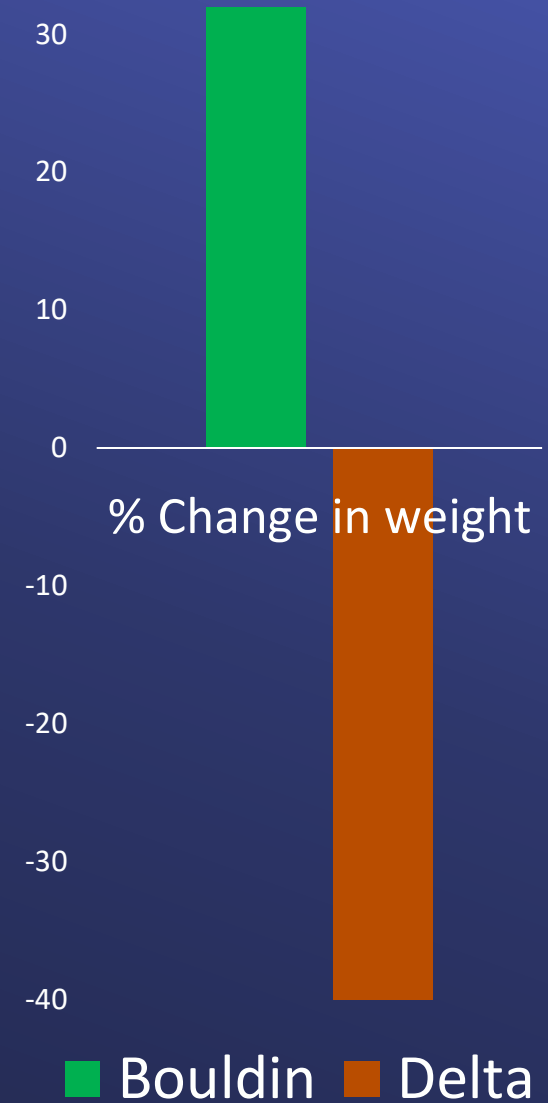


Delta Smelt Preservation Project Results



Existing ponds on Bouldin

- Successfully cultured delta smelt on Bouldin
 - **>90% survival**
 - Fall Growth:
Bouldin > in the wild
- Evaluating further expansion in future
- Exploring multiple pond culture options




Delta Smelt Summer/Fall Operations 2025



Structured decision-making saved SWP water this year

- Structured Decision-Making process was employed to evaluate summer/fall Delta operations
- Done in collaboration with multiple agencies and interested parties
- Potential to save the SWP approximately 150 TAF without impacting current protections for species



Future Updates on Studies & Collaborations

- Improving conditions for native species
 - Food
 - Habitat
 - Water Quality
 - Predation
- Webb Tract implementation
- Upper Feather River watershed projects
- Delta island studies on water use and accounting
- Tribal & community partnerships for long-term wetland management
- Additional structured decision-making opportunities

