



Engineering, Operations, & Technology Committee

Second Lower Feeder PCCP Rehabilitation Reach 3B

Item 7-2

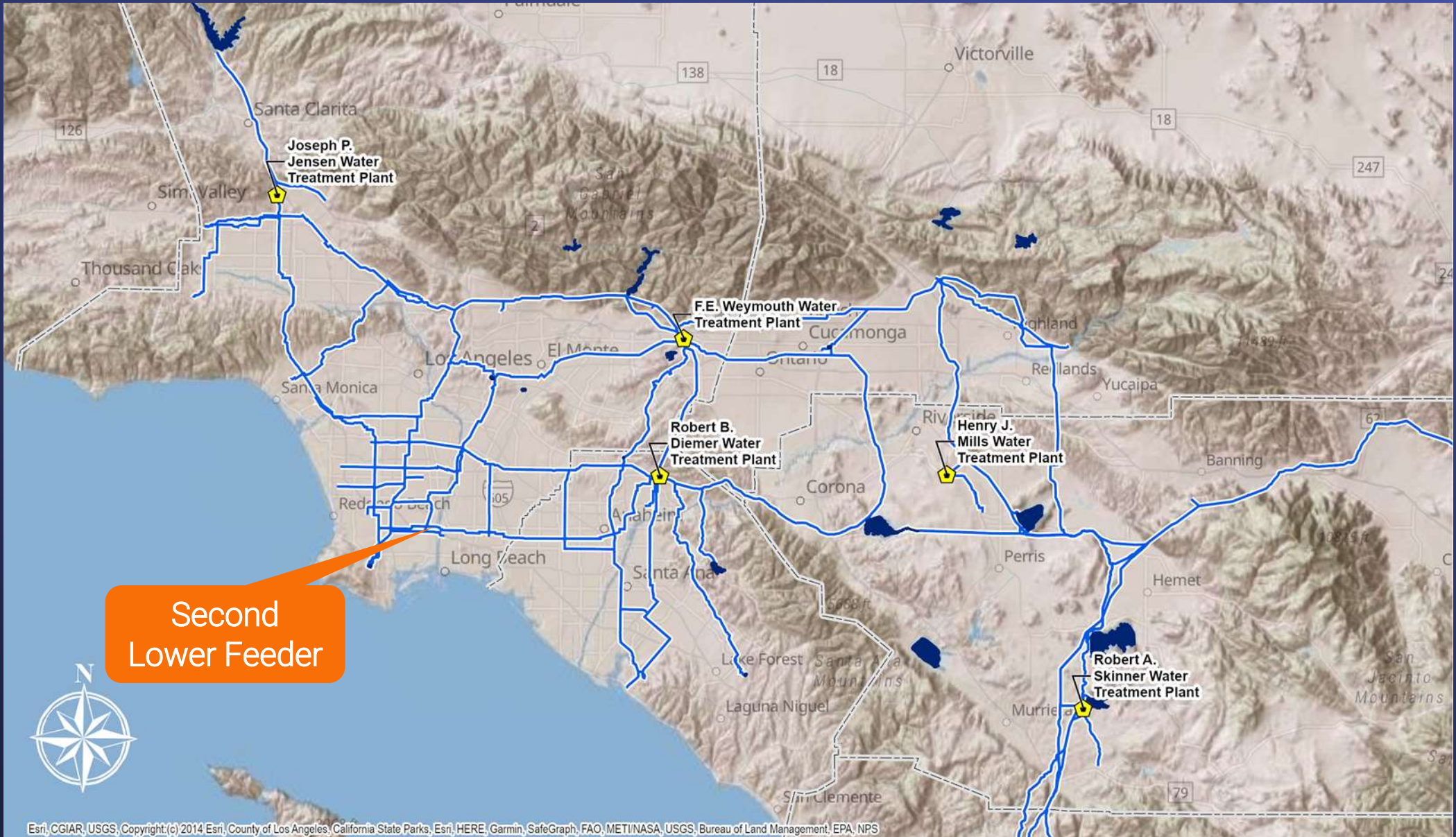
January 9, 2023

Second
Lower Feeder
PCCP
Rehabilitation
Reach 3B

Current Action

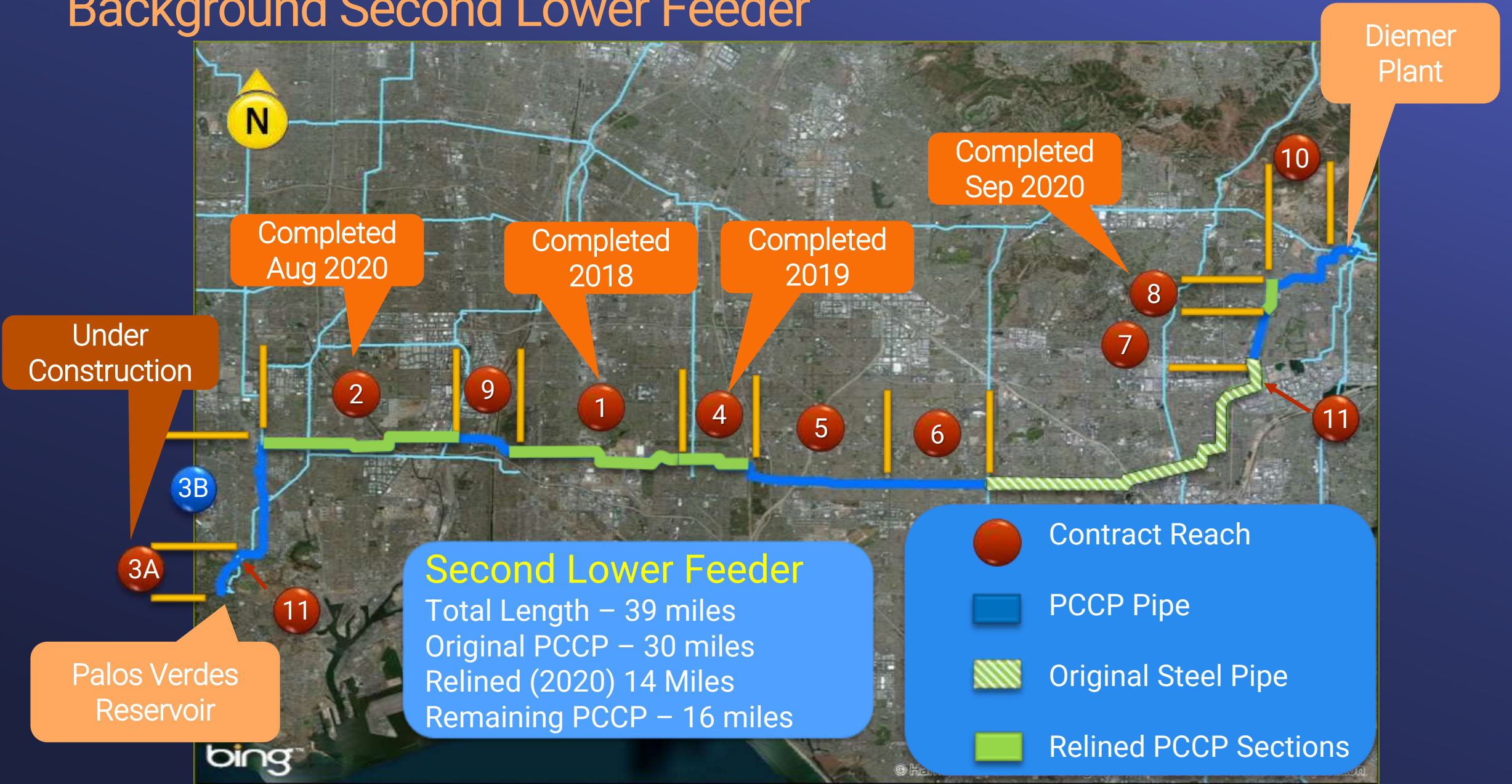
- Award a \$68,847,000 contract to J.F. Shea Construction, Inc. to rehabilitate Reach 3B of the Second Lower Feeder
- Authorize an access & permitting agreement with City of Lomita in an amount not to exceed \$310,000

Distribution System



Esri, CGIAR, USGS, Copyright (c) 2014 Esri, County of Los Angeles, California State Parks, Esri, HERE, Garmin, SafeGraph, FAO, METI/NASA, USGS, Bureau of Land Management, EPA, NPS

Background Second Lower Feeder



Second
Lower Feeder
PCCP
Rehabilitation
Reach 3B

Alternatives Considered

- Construction of Reaches 3A & 3B under one construction contract & shutdown
 - Requires an 8-month shutdown
 - Member agencies in this area cannot sustain shutdowns longer than 4 months
- Selected Alternative – Separate Reach 3 into Reaches 3A & 3B
 - Provides greater lead time to procure temporary bypass piping
 - Reduces schedule & materials procurement risks associated with longer shutdowns

Contractor Scope

- Line approximately 19,500 ft. of existing PCCP
- Replace three 42-inch with three 48-inch valves at sectionalizing structures
- Install & remove the Palos Verdes Reservoir Bypass Pipeline
- Rehabilitate all maintenance holes & air release valves
- Construct new maintenance holes
- Surface restoration



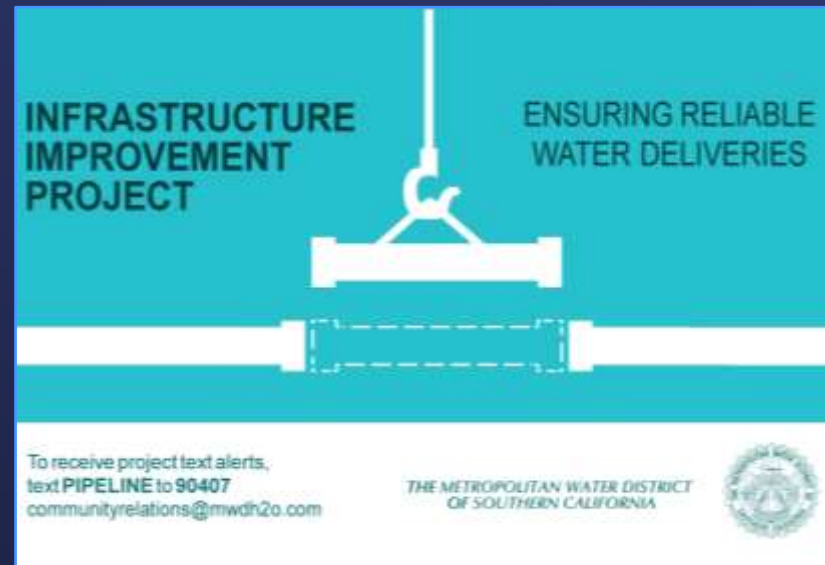
Fabrication of 48-inch Diameter Valve



Typical Pipe Access and Storage Site

Metropolitan Scope

- Fabrication inspection
- Conduct multiple shutdowns
- Construction management/inspection
- Submittal review & record drawings
- Remove bulkheads & piping that isolate Palos Verdes Reservoir
- Permitting, ROW, public outreach, & program management



Bid Results

Specifications No. 2026**

Bids Received	December 8, 2022
No. of Bidders	3
Low Bidder	J.F. Shea Construction, Inc.
Low Bid	\$68,847,000
Range of other Bids	\$87,991,972 to \$112,206,766
Engineer's estimate	\$72 M
SBE Participation*	10%

*SBE (Small Business Enterprise) participation level set at 10%

**This contract will be conducted under the terms of Metropolitan's project labor agreement

Second
Lower Feeder
PCCP
Rehabilitation
Reach 3B

Access & Permitting Agreement with City of Lomita

- Open excavation required to rehabilitate pipeline
 - Work conducted in residential neighborhood
 - Two pipe access sites
 - Three full & three partial street closures
- \$235,850.47 for permit fees during the planned construction duration
- Deposit to extend the permit on a month-to-month basis for six months at a rate of \$11,609 per month
- NTE amount - \$310,000

Allocation of Funds

Contract

J.F. Shea Construction, Inc.	\$68,847,000
Los Angeles Conservation Corps	250,000

Metropolitan Labor

Program mgmt., permitting, contract admin. & travel	3,050,000
Force Construction	5,977,000
Construction Management/Inspection	8,400,000
Submittal review, technical support, & record drwgs.	1,971,000

Incidentals, Materials & Supplies 705,000

Right-of-Way 835,000

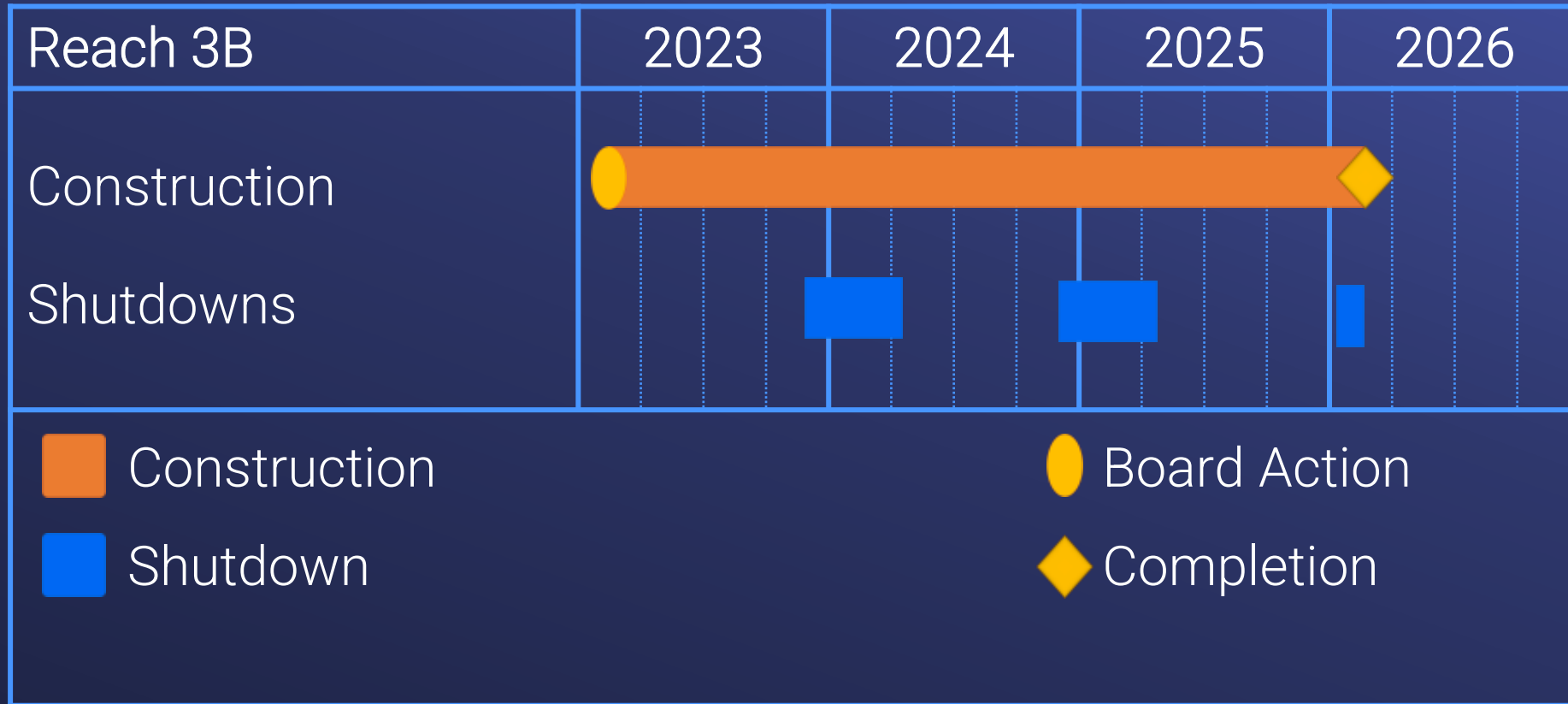
Professional Services

Black & Veatch, Inc.	510,000
Parsons Constructors, Inc.	500,000
Helix Group, Inc.	220,000
Water Systems Consulting	150,000

Remaining Budget 2,385,000

Total **\$93,800,000**

Second Lower Feeder Project Schedule



Board Options

- Option #1

Review and consider Addendum No. 5 to the certified 2017 Programmatic Environmental Impact Report for the Prestressed Concrete Cylinder Pipe Rehabilitation Program, and

- a. Award a \$68,847,000 contract to J.F. Shea Construction, Inc. to rehabilitate Reach 3B of the Second Lower Feeder; and
- b. Authorize an access and permitting agreement with the city of Lomita in an amount not to exceed \$310,000.

- Option #2

Do not move forward to rehabilitate Reach 3B of the Second Lower Feeder at this time.

Staff Recommendation

- Option #1

