



One Water and Stewardship Committee

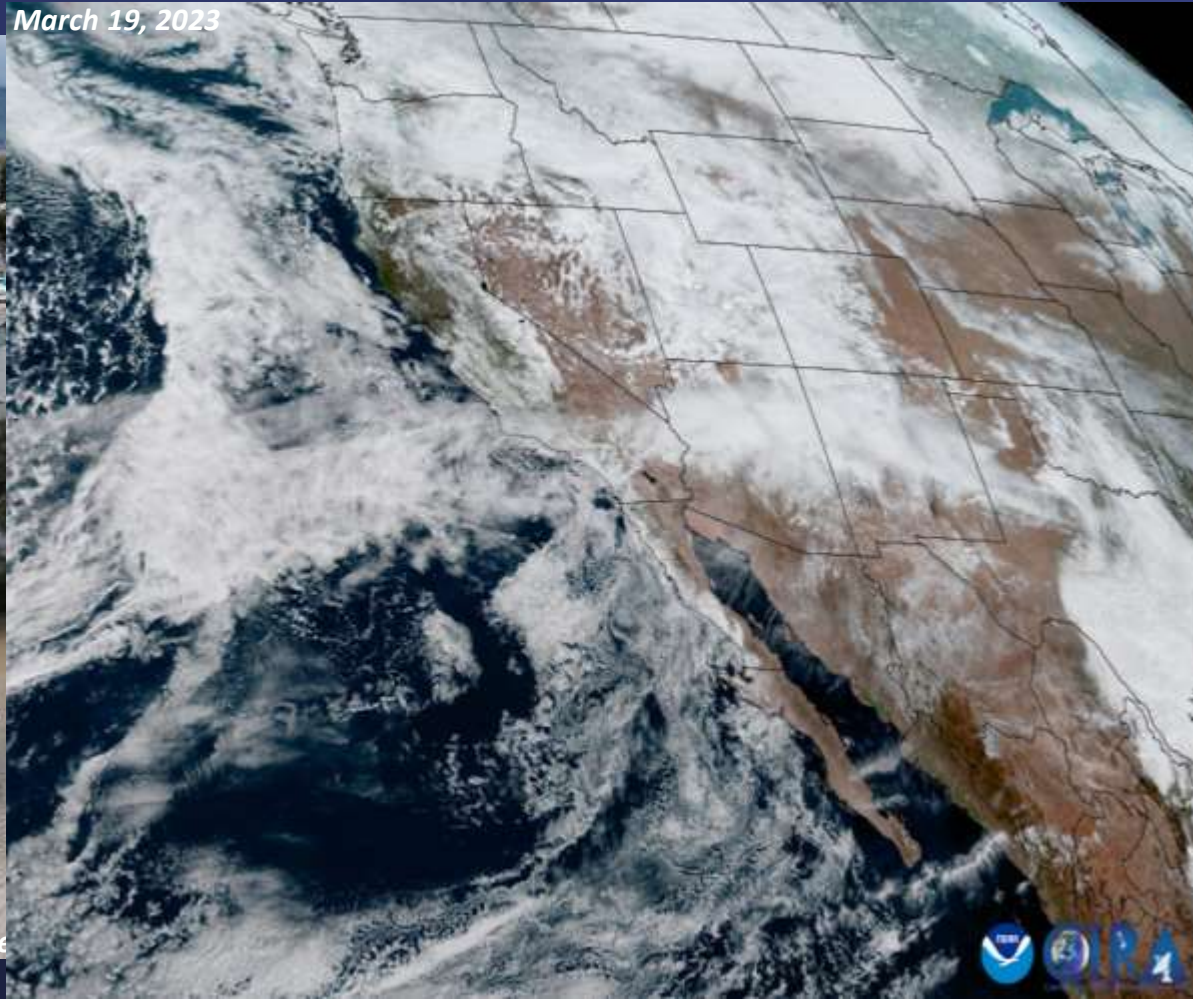
# Update on WSDM

Item 6e  
April 10, 2023

# Hydrologic Conditions

# Winter Storms Continue to Pummel California & the West

March 19, 2023



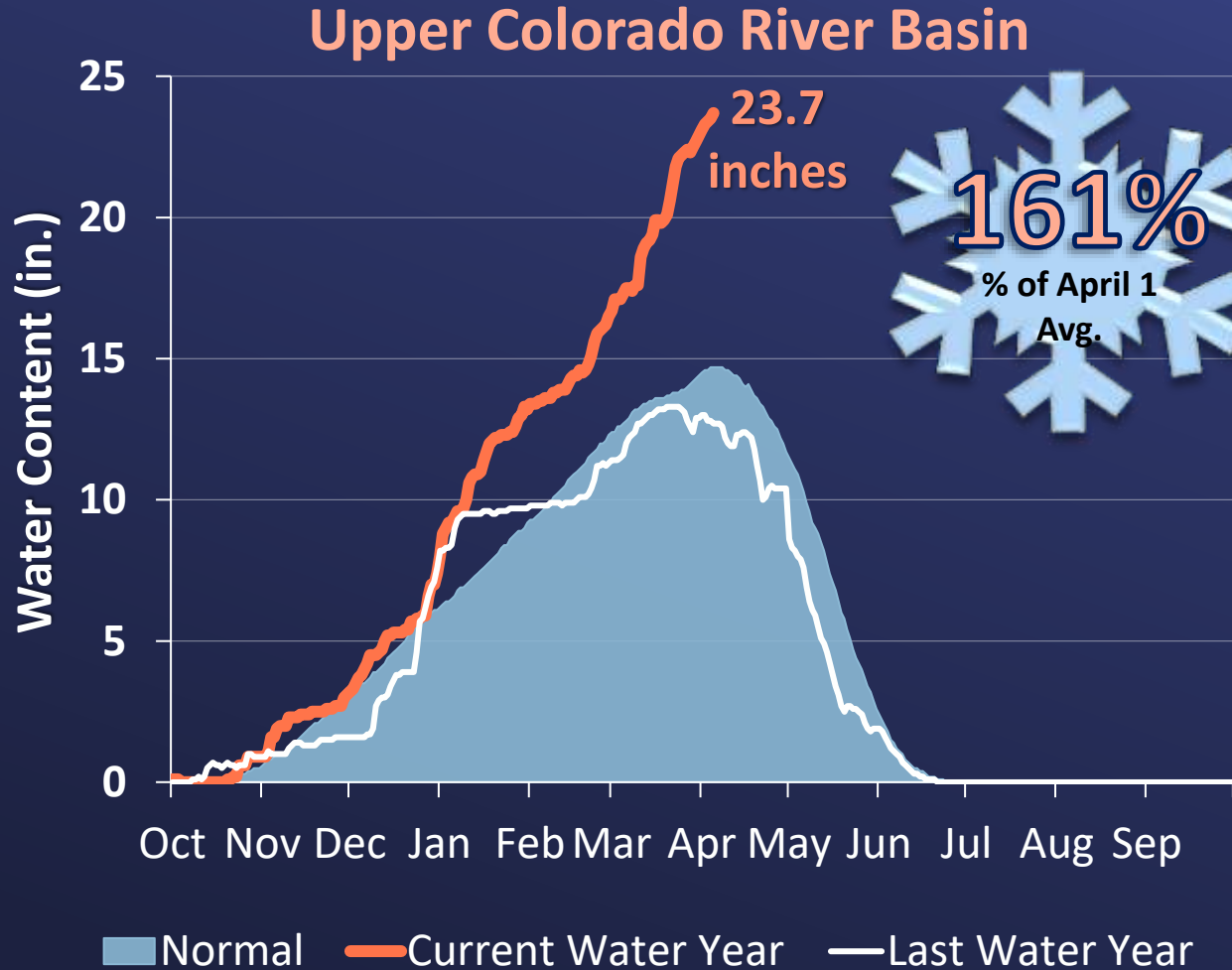
March 28, 2023





# Near Record Snowpack for Upper Colorado River Basin

As of 04/05/2023



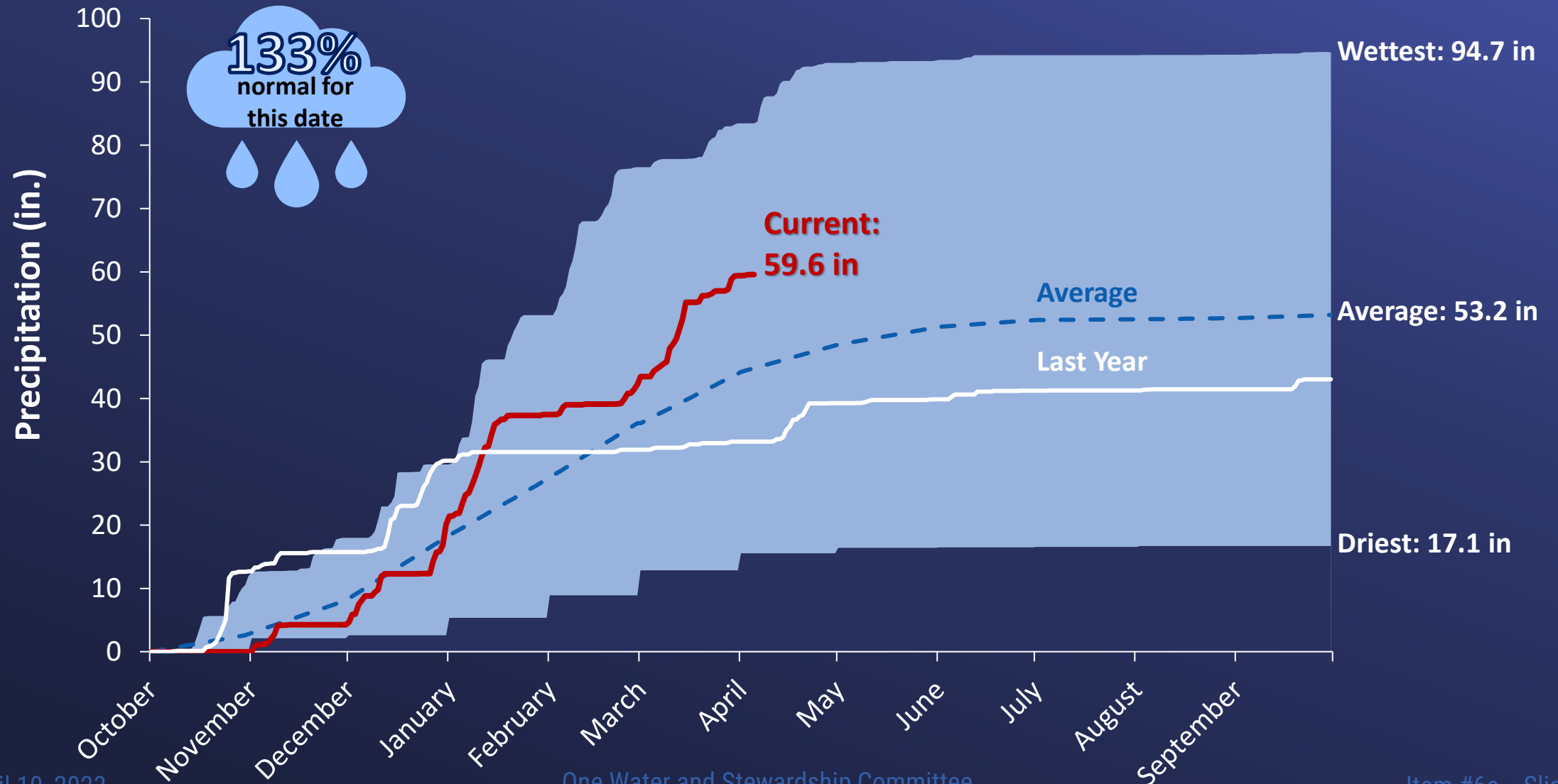
# Colorado River Update

## Evolving Discussions with Reclamation

- Metropolitan temporarily turning over some Colorado River programs to the federal government (2023-26)
- Such programs would augment Lake Mead levels, rather than coming through CRA to Metropolitan
  - Metropolitan reduces CRA pumping and backfills supplies from those programs with SWP water
- Inflation Reduction Act funds would be used to pay for those programs, reducing Metropolitan's costs
  - Metropolitan would also receive revenue for fallowing its own lands in PVID
- In future years, Metropolitan has option to “call-back” programs, if conditions warrant

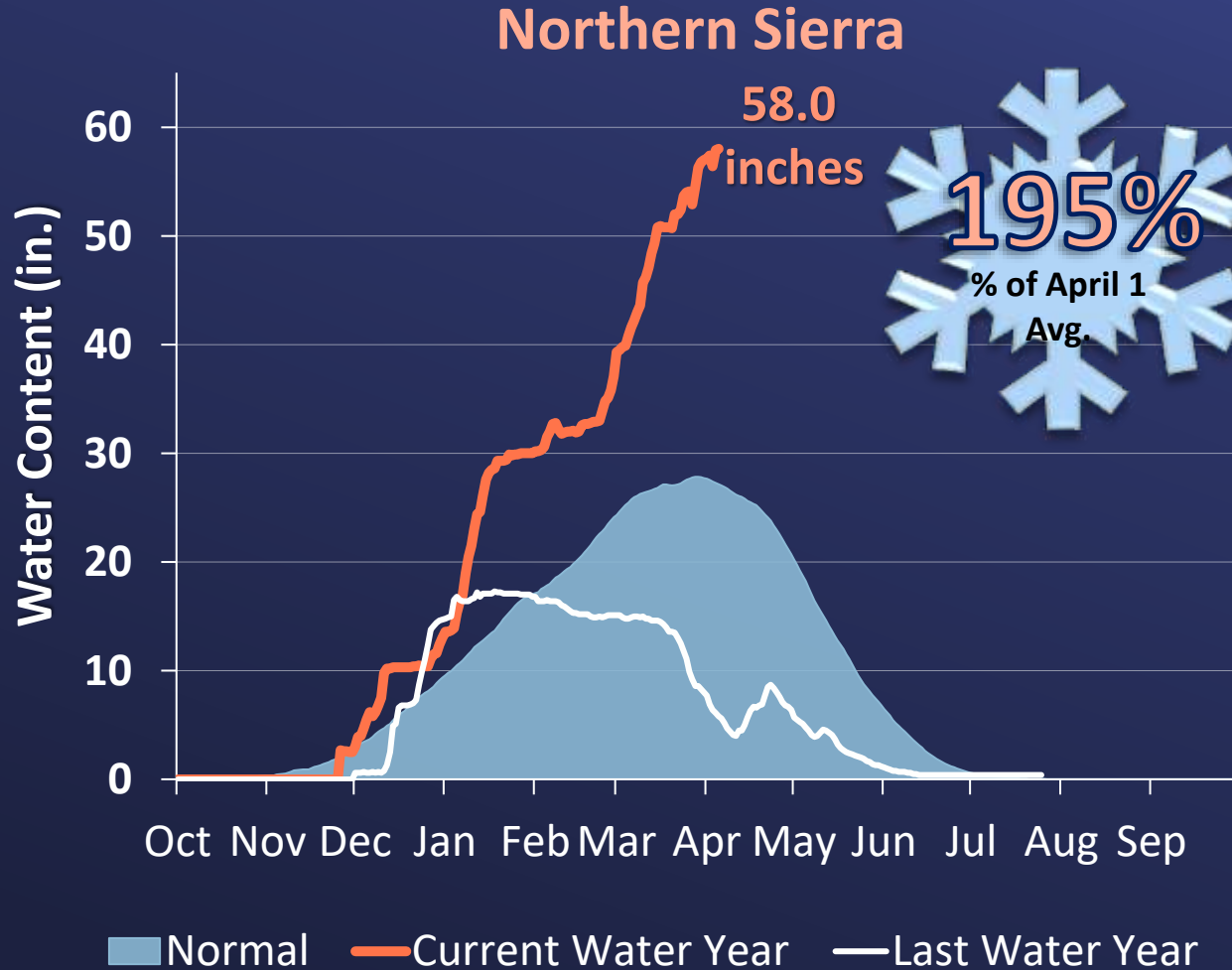
# Northern Sierra Precipitation: 8-Station Index

As of 04/05/2023



# Near Record Snowpack for Northern Sierra

As of 04/05/2023



Credit: California Department of Water Resources



# Significant Snowpack Gains throughout the Sierra Nevada

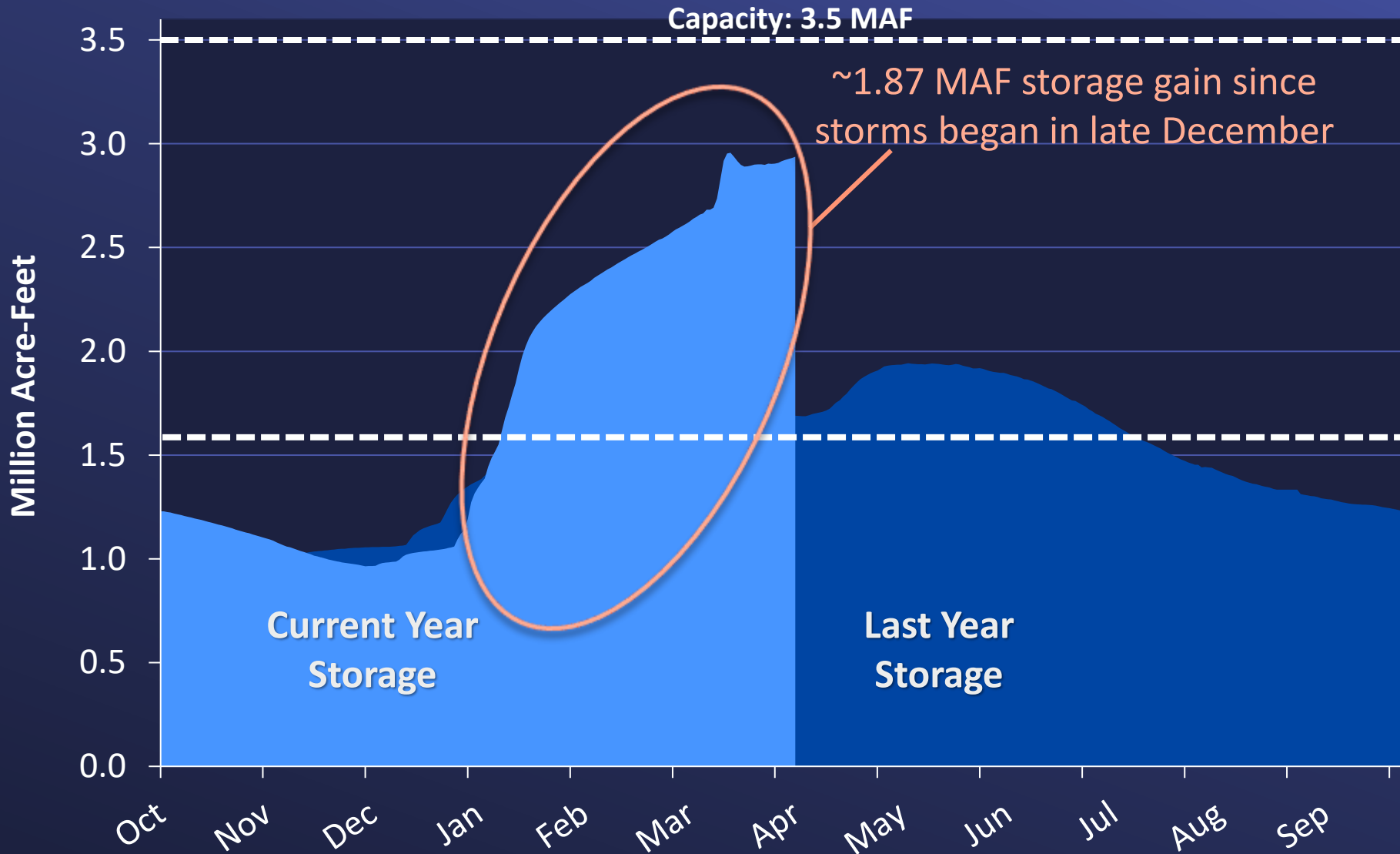
As of 04/05/2023





# Significant Gains in Lake Oroville Storage

As of 04/05/2023



# DWR Continues Releases from Oroville Spillway

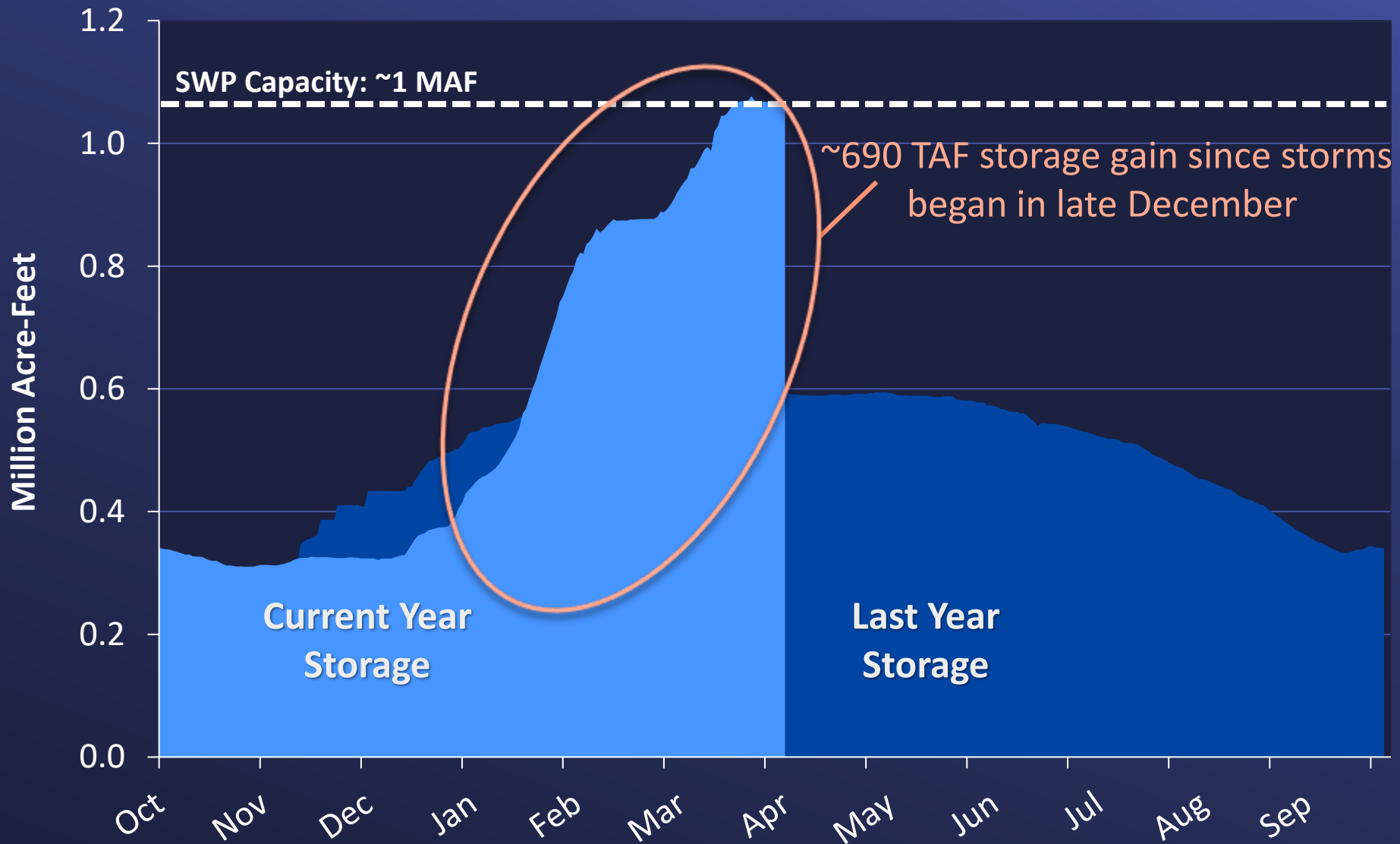


*Credit: California Department of Water Resources*



# SWP Share of San Luis Reservoir Currently Full

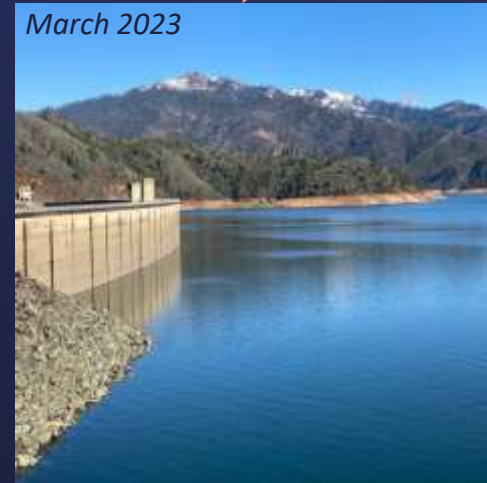
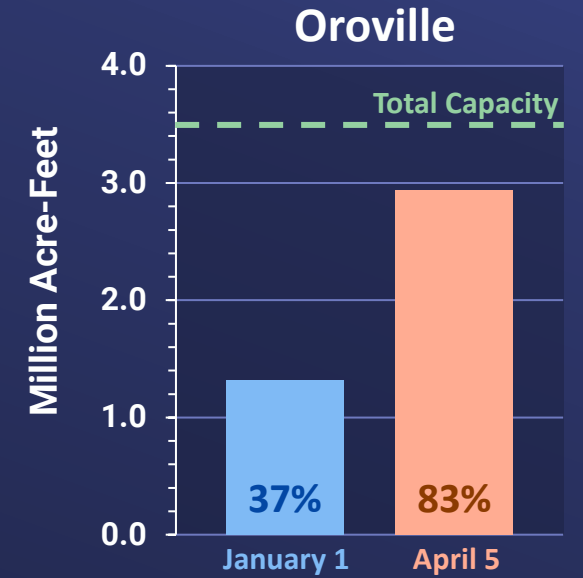
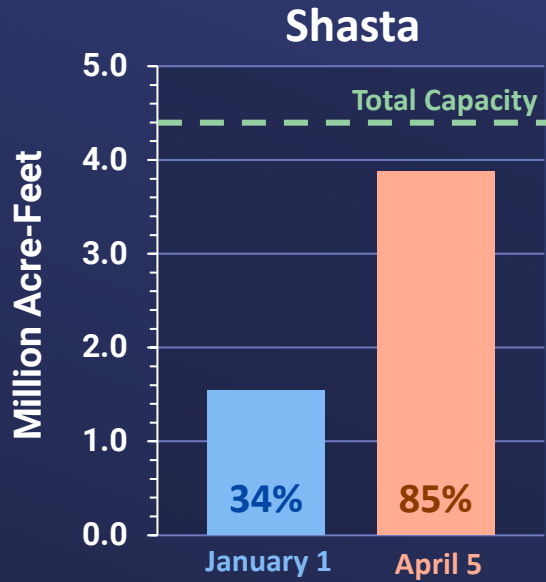
As of 04/05/2023



# Water Supply Demand Balance



# Major Water Systems are Improving by Capturing Winter Storms

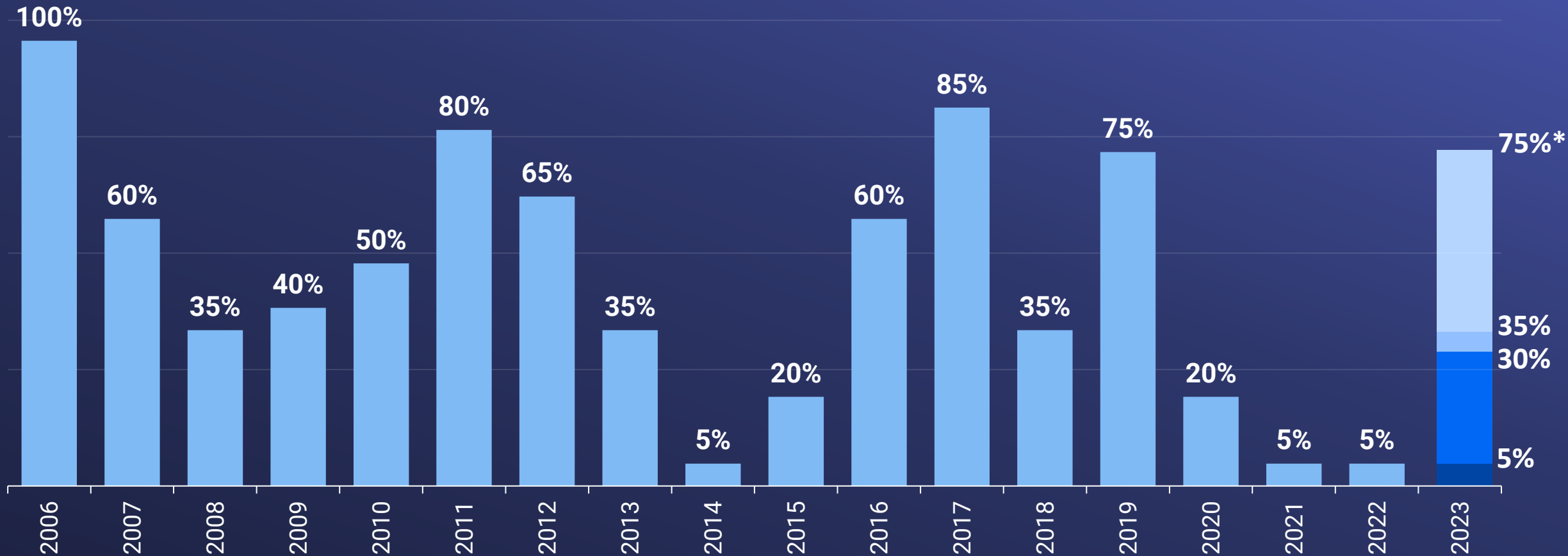


April 10, 2023

Note: Displaying percent of total capacity.  
One Water and Stewardship Committee

Item #6e Slide 13

# SWP Allocation Increasing as Major Water Systems Improve



\* Current 2023 SWP Table A Allocation, as of March 24, 2023. Additional increases possible before 2023 SWP Table A Allocation is final.

# WSDM Update

## SWP Table A Allocation Increases to 75%

- SWP Allocation increased from 35% to 75%
  - Continual improvement in hydrologic conditions from February and March storm events
  - Record snowpack all throughout Sierra Nevada
  - Additional increases to the SWP Allocation may occur
- Governor Newsom issued Executive Order N-5-23
  - State of emergency for the entire state continues
  - Local water agencies no longer required to implement Level 2 actions of Water Shortage Contingency Plans
  - Wasteful watering practices continue to be banned

# WSDM Update

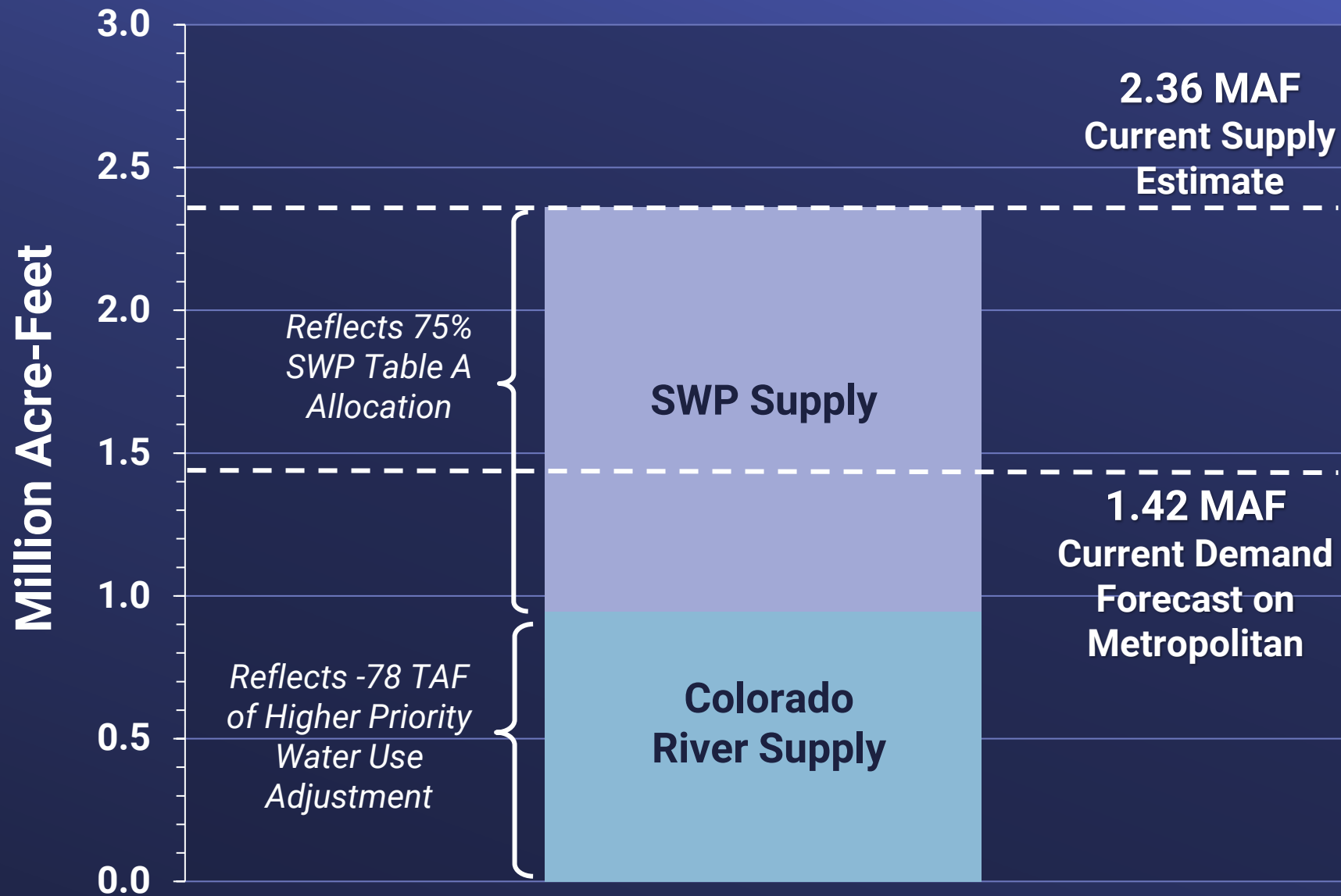
## Article 21 Supplies

- Article 21 supplies are additional supplies above the SWP Table A Allocation
- Article 21 supplies are allocated week-to-week, and available to SWP Contractors when:
  - 1) SWP share of San Luis Reservoir is full
  - 2) Contractor demands are met and additional supplies available for export from Delta
  - 3) SWP Contractor can store supplies in non-SWP facilities
- Article 21 supplies were first made available in late March
  - Metropolitan has taken delivery of all of its allocated Article 21 supplies to date (123 TAF)



# 2023 Water Supply Demand Balance

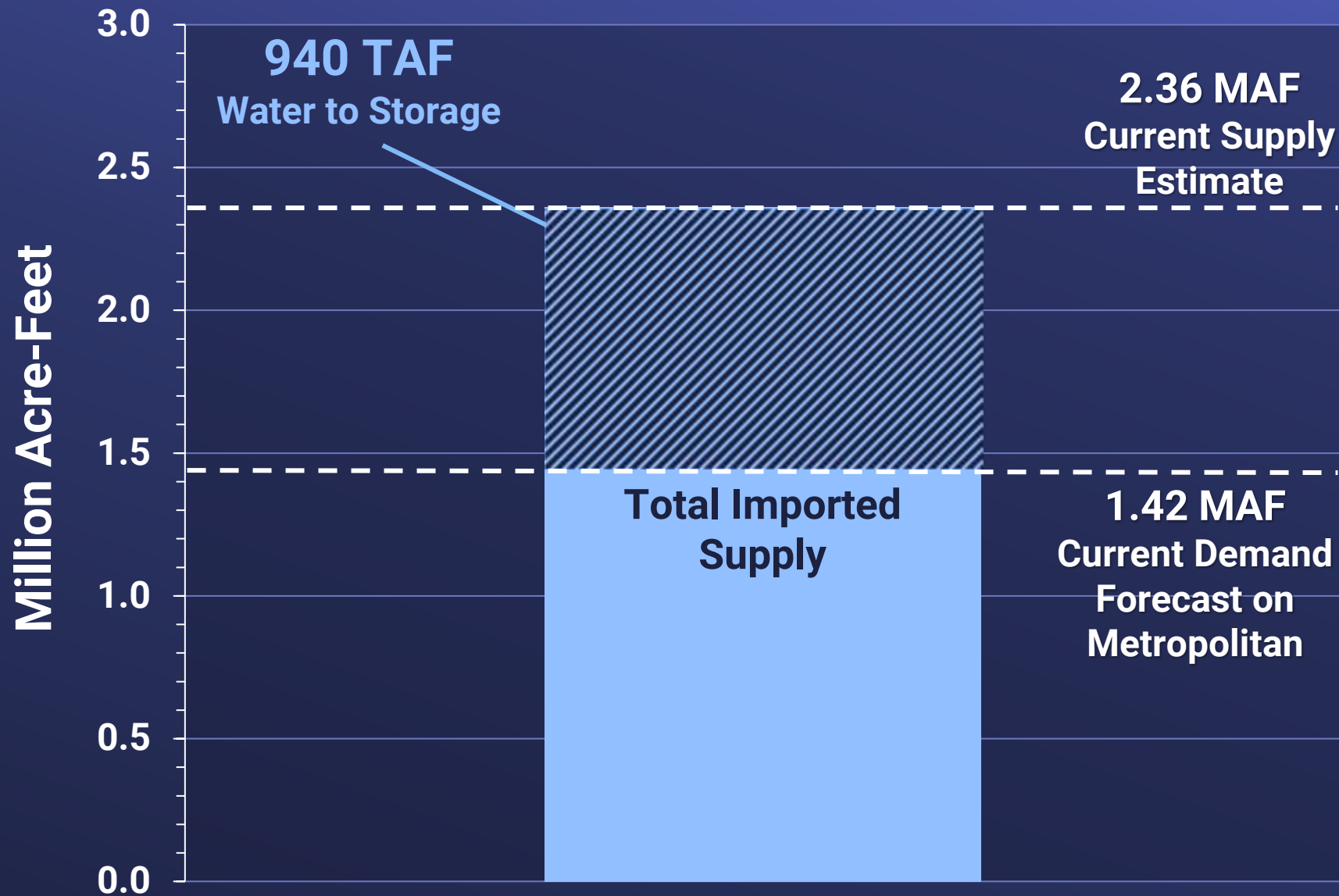
Improved Conditions Allow for Puts into Storage



Notes: 1) Demand includes deliveries to local storage & groundwater basins.  
2) Puts to storage will increase as increases in SWP Table A Allocation and Article 21 supplies occur.  
3) Data as of April 4, 2023.

# 2023 Water Supply Demand Balance

Improved Conditions Allow for Puts into Storage



Notes: 1) Demand includes deliveries to local storage & groundwater basins.  
2) Puts to storage will increase as increases in SWP Table A Allocation and Article 21 supplies occur.  
3) Data as of April 4, 2023.

# Metropolitan Storage: 2023 Starting Balance of 2.24 MAF



*Note: Total 2023 starting balance does not include emergency storage.*

# Metropolitan Storage: 2023 Ending Balance of 3.18 MAF



**Notes:**

- 1) Dashed lines indicate 2023 starting storage balances.
- 2) Ending storage balances are projections (as of April 4, 2023) and will vary based on actual conditions.
- 3) Total 2023 ending balance does not include emergency storage.



# Refilling Storage at Diamond Valley Lake

03/27/2023



# One Water Management

## Adapting to Climate Change & Ongoing Uncertainties

- California vulnerable to extreme, variable weather
- Other uncertainties (regulations, legal, environmental, etc.) continue to threaten water supplies
- Water use efficiency efforts are critical
  - Metropolitan and local water agencies provide rebates and water saving tips
- Investments in a One Water approach allow us to better adapt to changed conditions
  - Metropolitan investing in innovative approaches, such as Pure Water Southern California

