



One Water and Adaptation Committee

Climate Adaptation Master Plan for Water Quarterly Update

Item 6d

July 7, 2025

Item 6d

Climate Adaptation Master Plan for Water Quarterly Update

Subject

Climate Adaptation Master Plan for Water Quarterly Update

Purpose

Provide Committee an update of CAMP4W progress and activities since the Board approved the Implementation Strategy in April 2025.

Next Steps

The CAMP4W Implementation Strategy tools and policy guidance will be implemented with regular updates, reviews, and decision-making by the Board.

CAMP4W Provides an Iterative and Adaptive Process



CAMP4W Progress through June 2025

Executive
Integration

Project and
Program
Assessments

Implementation
Tracking and
Oversight

Additional
Highlights

Executive Integration of CAMP4W



EMPOWER the workforce and promote diversity, equity, and inclusion



SUSTAIN Metropolitan's mission with a strengthened business model



ADAPT to changing climate and water resources



PROTECT public health, the regional economy, and Metropolitan's assets



PARTNER with interested parties and the communities we serve

GM Business Plan
goals and
outcomes mirror
CAMP4W
Implementation
Strategy to
integrate climate
adaptation district
wide

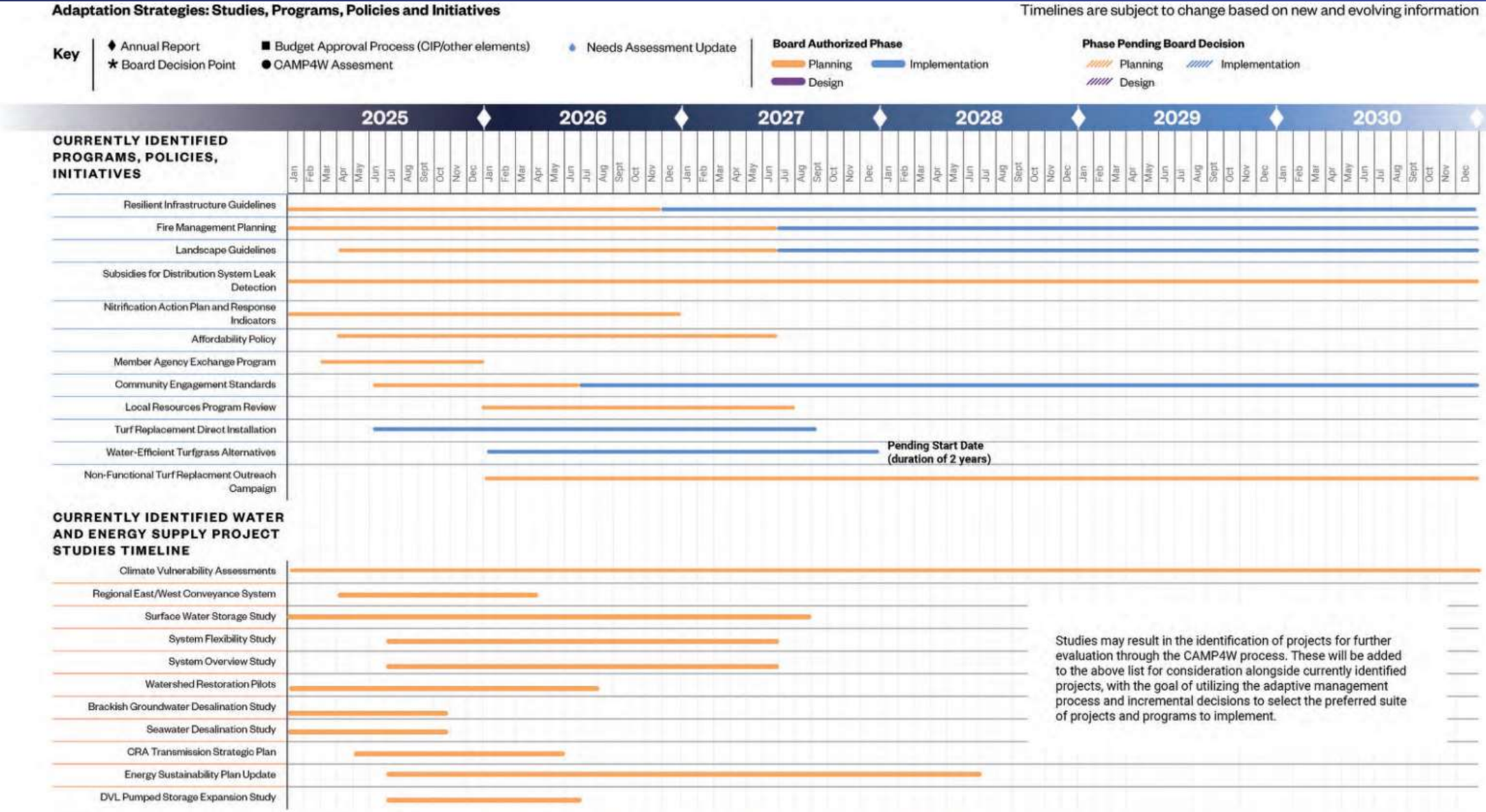
CAMP4W Assessments Initiated

Assignments identified per CAMP4W Evaluative Criteria

- Initial Assessments include project and portfolio assessments starting with:
 - Pure Water Southern California
 - Sites Reservoir
 - Delta Conveyance Project
 - Water Efficiency Program
- Coordinating responsibilities among the Assessment Team and Project Lead
- Ensuring best available information and full transparency on underlying assumptions of Assessments
- Providing comprehensive information to inform decision-making



CAMP4W Implementation Timelines Progress Tracking



CAMP4W Implementation Strategy Tracking and Board Updates

CAMP4W Activity	Board Committee/s	Anticipated Board Update/s	Group Lead
Conduct climate vulnerability and risk assessments for critical facilities and assets	OWA, EOT, FAAME		Sustainability
Develop power transmission assessment and strategic plan	EOT		Power Operations (IOPSS)
Refine asset management with climate risks and signposts	EOT	Annual	Operations (IOPSS)
Consider new targets (ex. imported source supplies, stormwater, equity, water quality)	OWA	Oct	Varies
Review and consider new climate policies	OWA, Legal	ongoing	Sustainability
Update financial reserve policy to align with changing climate conditions	FAAME	July	Finance
Develop options for possible affordability policy	FAAME		Sustainability
Initiate System Overview and Flexibility Studies (aka ISIR)	EOT	Quarterly (starting in Nov '25)	Engineering
Advance fire management planning	OWA	Oct	Sustainability
Initiate phase 3 of the Surface Water Storage Study	OWA, EOT	Quarterly (starting in Nov '25)	Engineering
Complete desalination studies	OWA		Water Resources
Initiate update to Energy Sustainability Plan	EOT		Engineering
Conduct Drought Mitigation project studies	OWA, EOT	Quarterly (starting in Nov '25)	Engineering
Study DVL pumped storage opportunities	EOT		Power Operations (IOPSS)
Implement Watershed Forest Resiliency pilots	OWA, IW	June, Sept	Bay-Delta
Evaluate possible investments using CAMP4W Assessments	OWA	July, Sept, Nov	All

Additional CAMP4W Implementation Highlights



FIRST ANNUAL CLIMATE VULNERABILITY RISK ASSESSMENT SUMMIT 2025

RSVP by emailing AHightower@mwdh2o.com



STEPHEN TORRES, SCE
GUEST SPEAKER

 **DATE**
21 May, 2025

 **TIME**
11:00 AM - 2:00 PM

 **LOCATION**
ROOM 2-456

 **ATTENDEES**
METROPOLITAN STAFF (INTERNAL EVENT)



**SUSTAINABILITY
RESILIENCE
INNOVATION**



- CAMP4W Project Team
- Bay-Delta Initiatives
- Colorado River Initiatives
- Engineering Services
- General Counsel
- Information Technology
- Integrated Operations
- Safety Security & Protection
- Sustainability, Resilience & Innovation
- Treatment & Water Quality
- Water Resource Management

