



# Bay-Delta Policy Update

## Workshop One

Water Planning and Stewardship Committee

Item 6c

March 7, 2022

# Workshop Overview



Background:  
Bay-Delta Policies

---



Research and Staff Workshops

---



Bay-Delta Policy Development  
and Framework

---



Policy Framework Application

---



Discussion

---

# BDI Policy Update Timeline


## June Action

	Oct	Nov	Dec	Jan	Feb	Mar	Apr	May	Jun
Staff Research and Development									
Kick Off with BDI Committee									
Committee Workshops 1+2									
Board Info and Action Items								<b>INFO</b>	<b>ACTION</b>

# Background: Bay Delta Policies




# Existing Board Adopted Bay-Delta Policies



Policy Principles 2006  
(Policy Principles - Themes)



Delta Action Plan Framework 2007  
(Short, Mid, and Long Term)



Delta Conveyance Criteria 2007  
(Near, Long Term and Approved  
Conveyance Criteria)

**Other Key Bay-Delta Board actions:** Bay-Delta Finance & Cost Allocation (May 2004), Delta Governance Principles (August 2008), Delta Vision Implementation (Jan 2009), Delta Related Legislation (April 2009)

# Four Central Policy Themes (2006)

Focus on a long-term Sustainable Delta

Promote Statewide Integrated Resource Management Actions – consistent with IRP

Long-Term Solutions Must be Cost-Effective and Fairly Apportion Costs to All Beneficiaries

Pursue continued Implementation/Protection of Drinking Water Supplies/Quality Facility Improvements

# Application of Existing Bay-Delta Policies and key initiatives

Conveyance Criteria

Delta Action Framework



**CSAMP**



2006

2008

2010

2012

2014

2016

2018

2020

Bay-Delta Policy Principles

Delta Governance Principles



Delta Conveyance Project

# Why Update the Bay-Delta Policies?



**Policies have not been updated in over 15 years**



**Policy structure is dense and spread over multiple board actions**



**Policies can be difficult to understand for both decision makers and the public**



**Metropolitan's policies should be clear and concise to support the board's future oversight and actions**



# Research and Staff Workshops

# Summarized Research

26

Detailed policy profiles focused on current issues and emerging trends completed by Subject Matter Experts.

50+

Internal workshop participants from across the organization

173

Comments reviewed and categorized

# Emerging Trends



## Climate change impacts on hydrology

Increased intensity and frequency of droughts, wildfires, floods



## Joint funding and partnerships are occurring statewide

Watershed wide partnerships, multi-agency science partnerships, project partnerships



## Delta Sustainability has become even more critical

Strain on environment, multi-benefit projects trending, co-existing environment and water supply needs

# Highlights and Key Points



**Community building in the Delta**



**Promote sustainable farming practices in Delta (flexible leases)**



**Delta Conveyance planning should emphasize proposed project operational reliability**



**Local resource development still requires imported water for recycling and groundwater recharge**



**Multi-benefit restoration projects are essential, streamlining permitting processes is a must**



**Energy sustainability and reliability is a paramount concern, but should not be at the expense of water suppliers**



# Bay-Delta Policy Development and Framework

**Objective:** Restructure policies to align with emerging trends while preserving topics that are still relevant to the Board's ongoing direction

# Key Six Policy Areas



Policy Area 1: Statewide Water Resource Management



Policy Area 2: Bay-Delta Science, Watershed Management, and Land use



Policy Area 3: Bay-Delta Operational Resilience



Policy Area 4: Bay-Delta Infrastructure Reliability



Policy Area 5: Community Investments and Partnerships



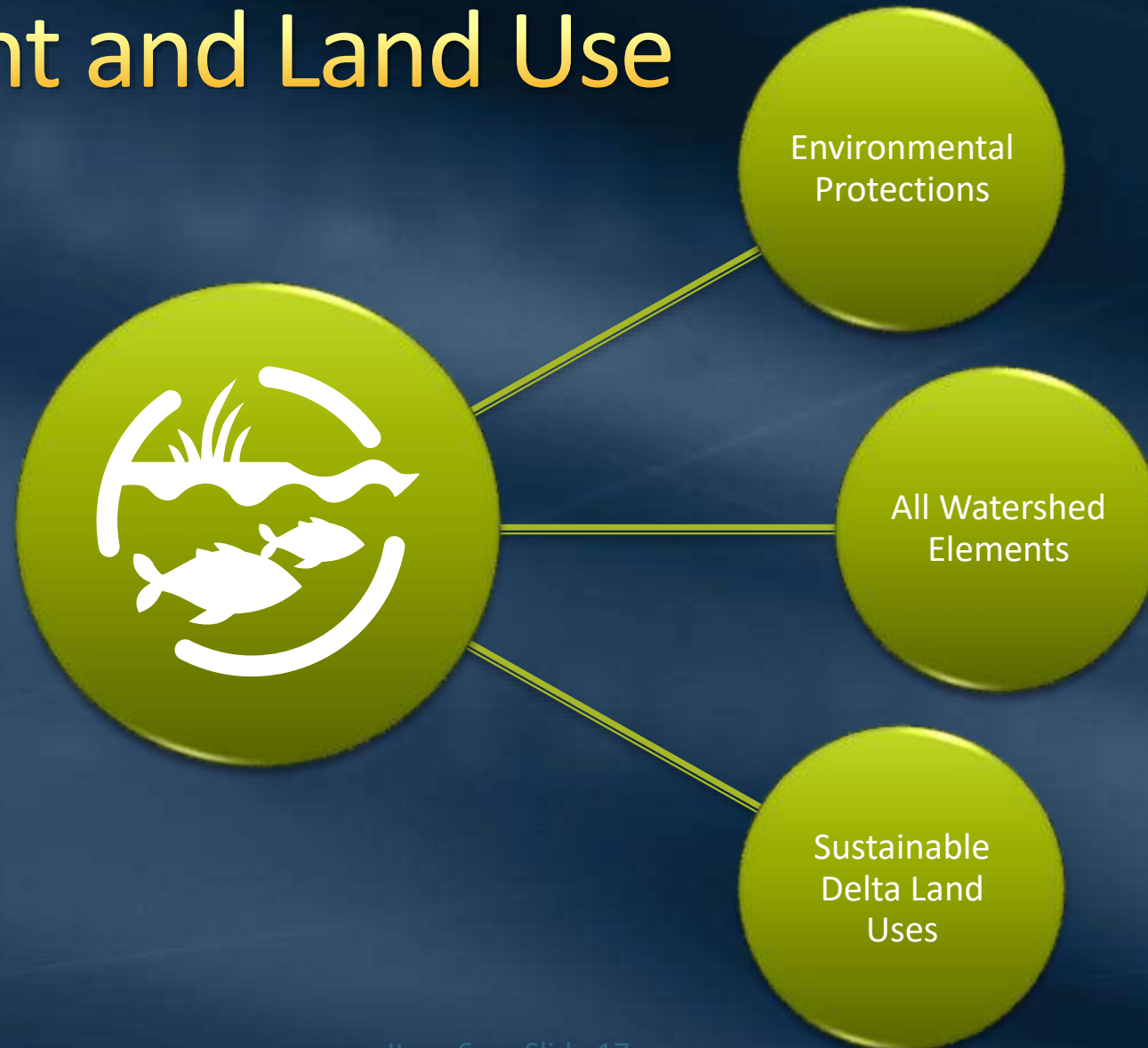
Policy Area 6: Statewide Water Resources Management Supports MWD's One Water

# Policy Area 1: Statewide Water Resource Management

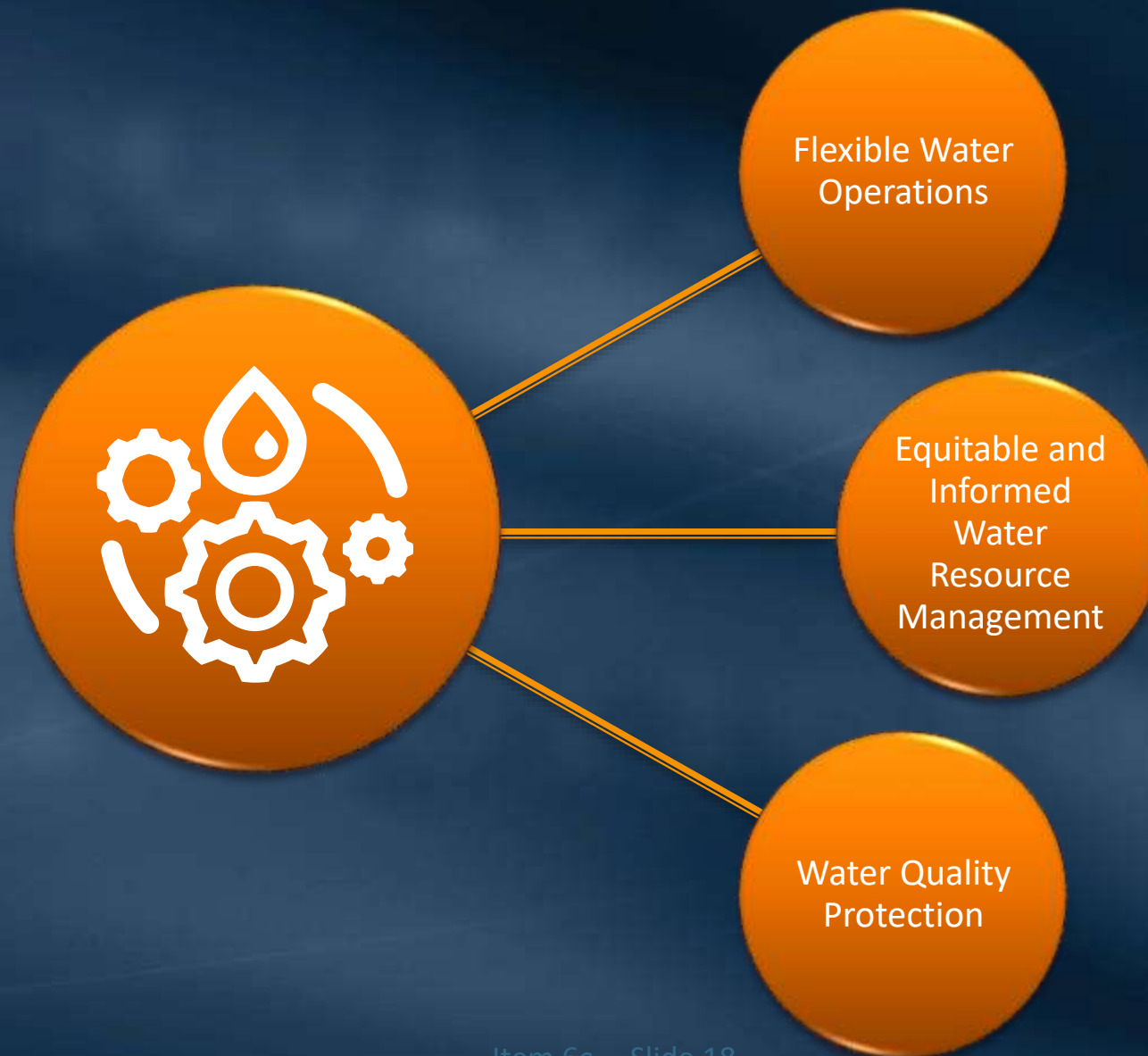




# Policy Area 2: Bay-Delta Science, Watershed Management and Land Use



# Policy Area 3: Bay-Delta Operational Resilience



# Policy Area 4: Bay-Delta Infrastructure Reliability



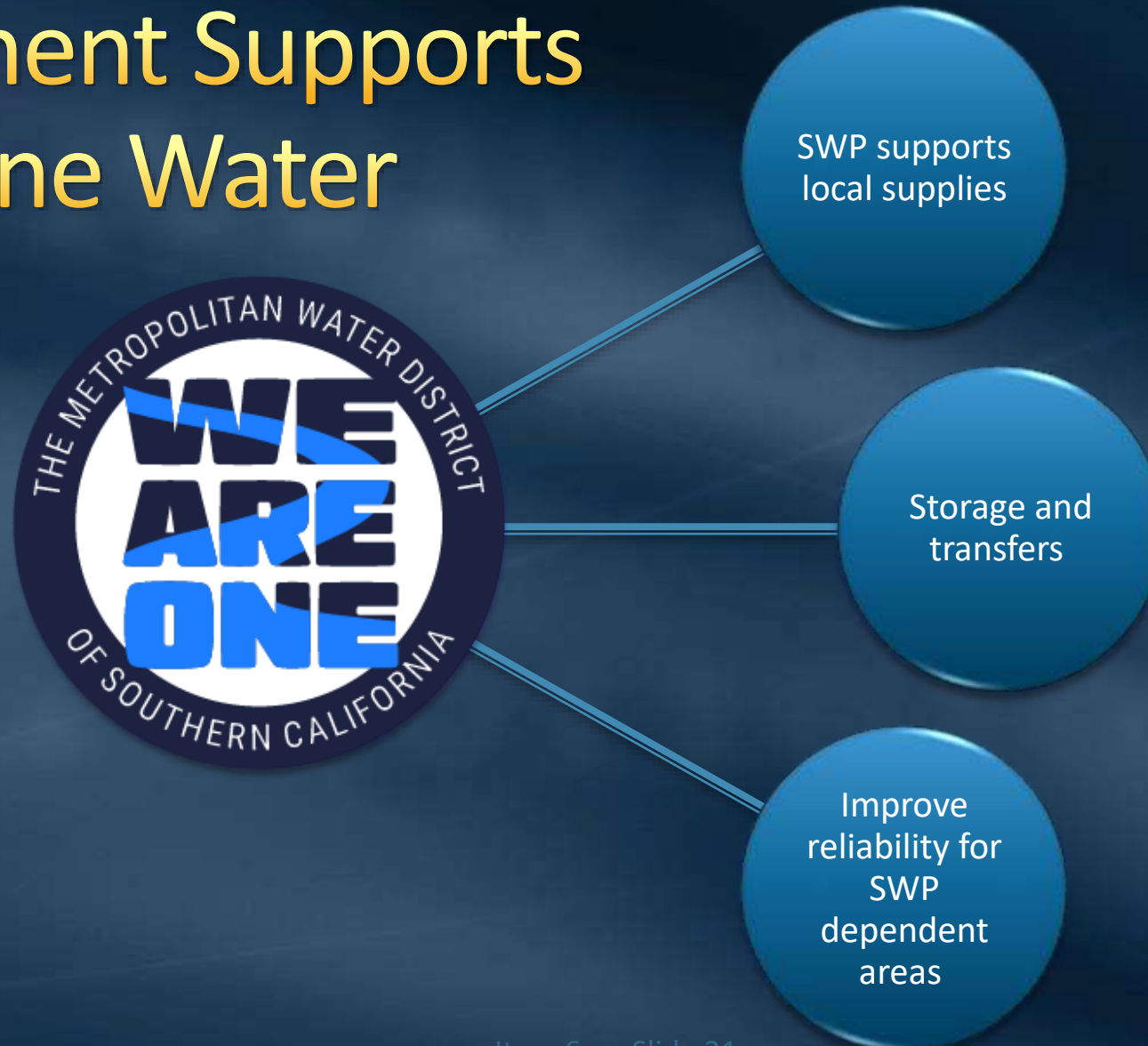
# Policy Area 5: Community Investments and Partnerships



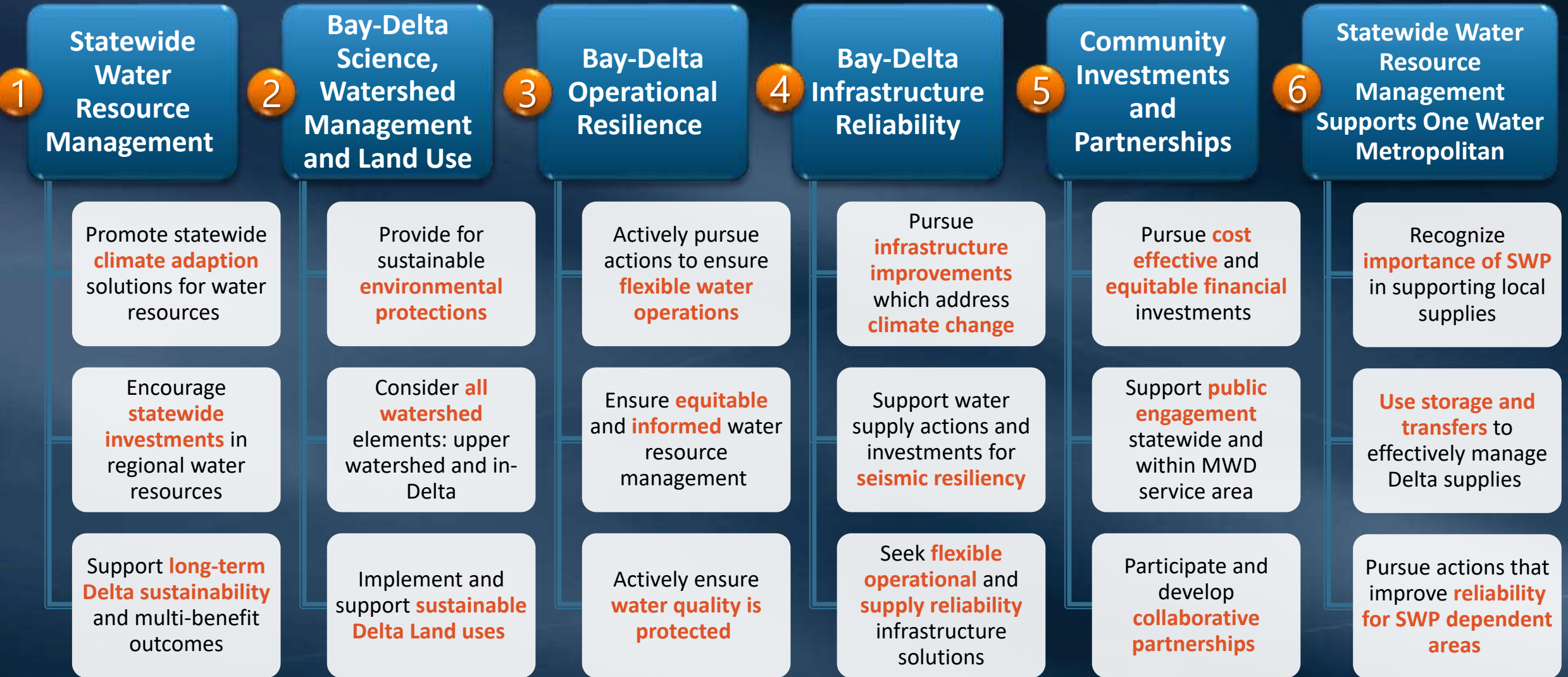


# Policy Area 6: Statewide Water Resources Management Supports

## MWD's One Water



# DRAFT Bay-Delta Policy Framework: Policy Areas and Principles



# Applying the Bay-Delta Policy Framework

# Use of Bay-Delta Policies

- Provide board direction to staff related to Bay-Delta activities:
  - Program and project management
  - External engagement
  - Longer term planning
  - Key Investments
  - Day to day activities
- Align with proposed future board actions
- Final Board deliberation and actions would still be addressed individually





# Policy Application – Delta Science



## Policy Area 1: Statewide Water Resource Management

- Support long term Delta sustainability and multi-benefit outcomes



## Policy Area 2: Bay-Delta Science, Watershed and Land Use Management

- Provide sustainable environmental protections



## Policy Area 5: Community Investments and Partnerships

- Participate and develop collaborative partnerships



# Policy Application – Delta Islands



## Policy Area 1: Bay-Delta Science, Watershed and Land Use Management

- Implement and support sustainable Delta Land uses



## Policy Area 3: Bay-Delta Infrastructure Reliability

- Pursue infrastructure improvements which address climate change
- Support water supply actions and investments for seismic resiliency



## Policy Area 5: Community Investments and Partnerships

- Participate and develop collaborative partnerships

# Discussion

# Next Steps

# Committee Workshop #2

## April 2022



**Review DRAFT Bay-Delta  
Framework and policy  
principles**



**Discuss key policies**



**Solicit Board Input /  
Discussion**



**Next Steps:**

**Update and Finalize Policies for Board  
adoption  
May Info Item  
June Action Item**

