



One Water and Stewardship Committee

Update on WSDM

Item 6c
March 11, 2024

Item 6c

Update on WSDM

Subject

Update on Oral Report on Water Surplus and Drought Management

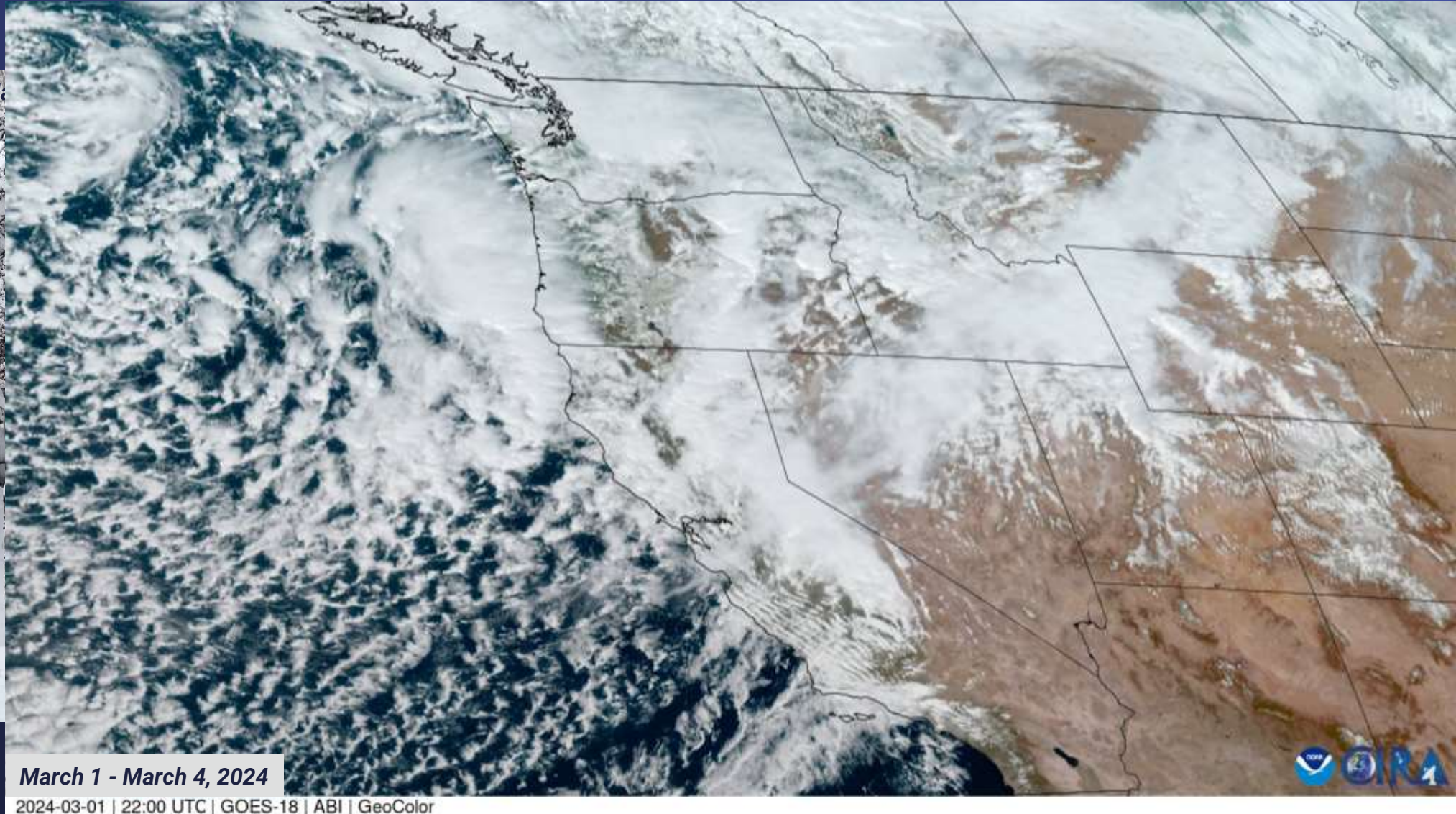
Purpose

Provide updated supply and hydrologic information



Hydrologic Conditions Update

Additional Winter Storms Impact California & the West



Lake Tahoe (M)



Credit: CNN



Imported Supply Watershed Conditions Continuing to Improve



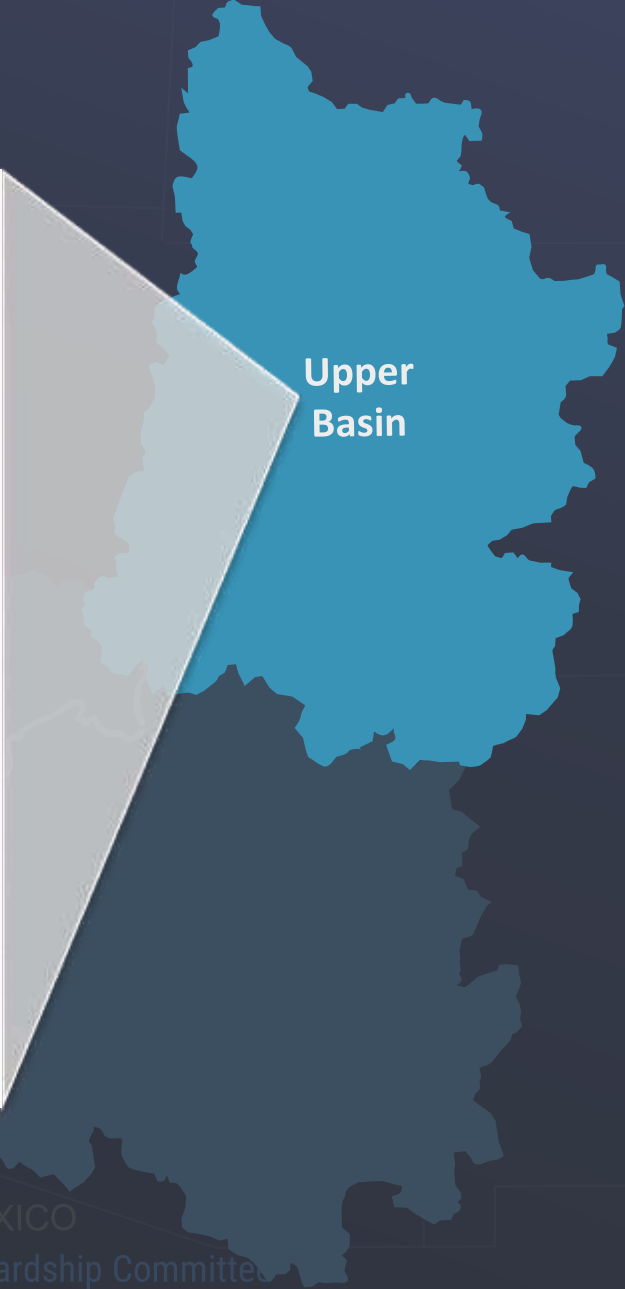
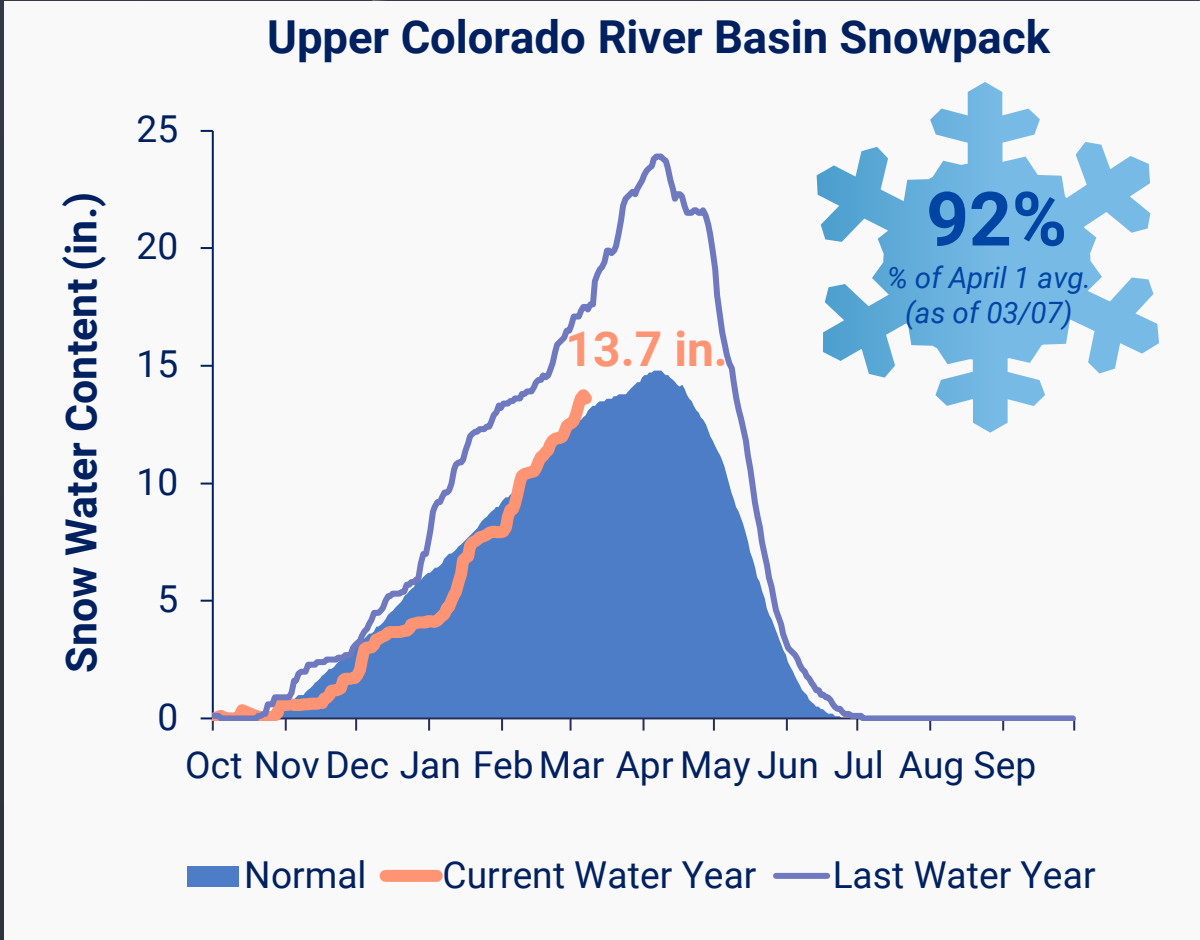
March 11, 2024

One Water and Stewardship Committee

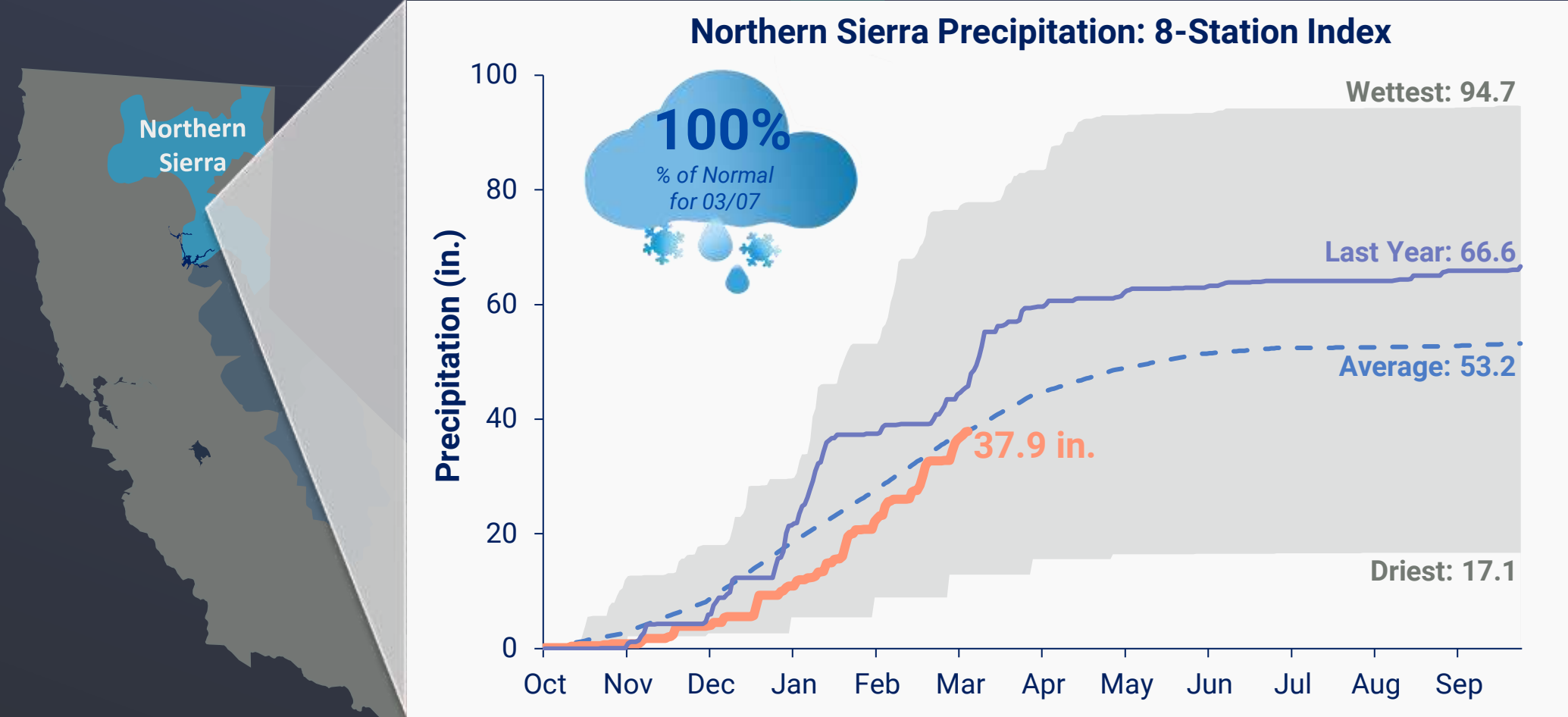
Item #6c Slide 5

Note: Images not drawn to scale.

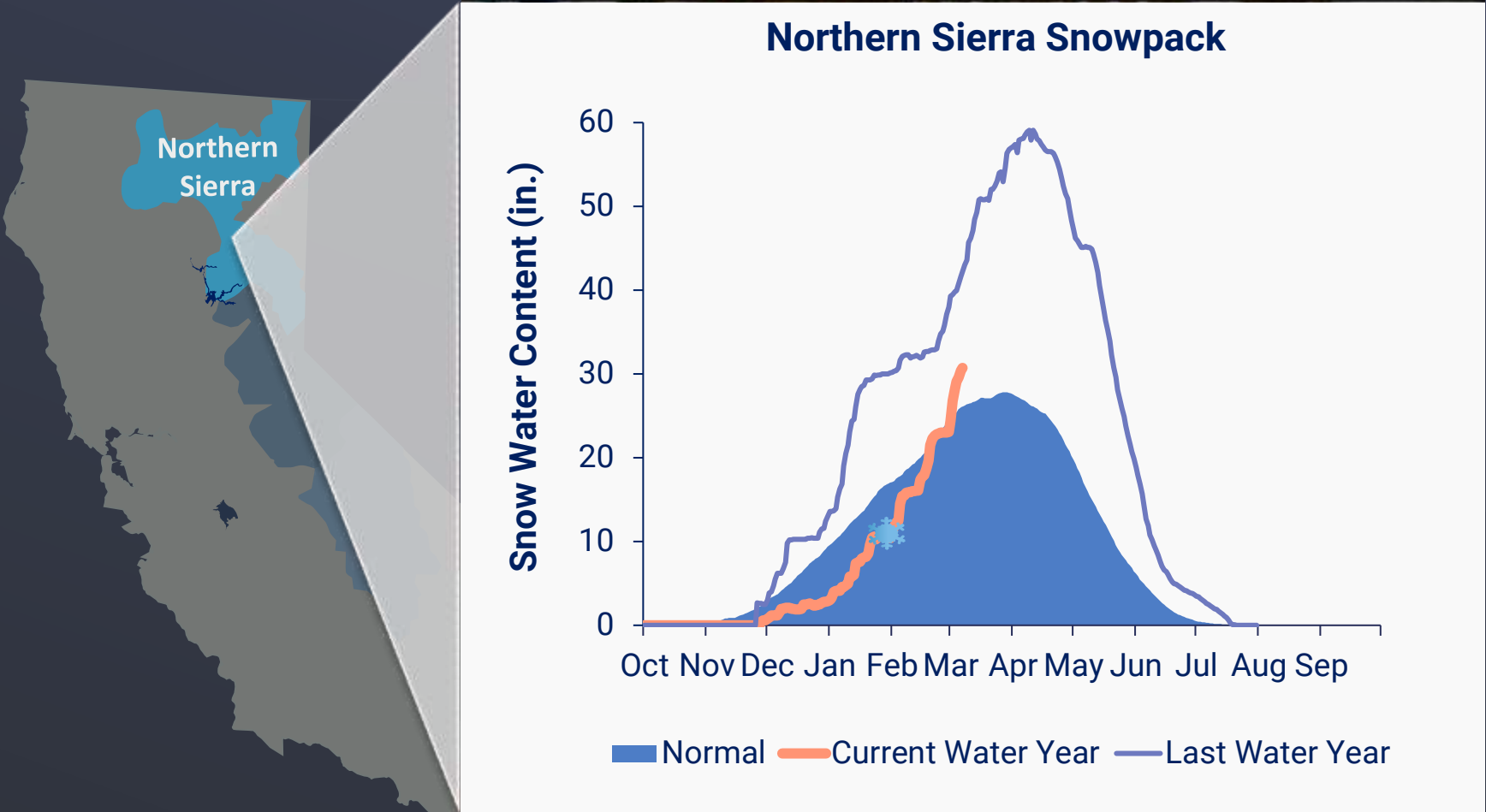
Imported Supply Watershed Conditions Continuing to Improve



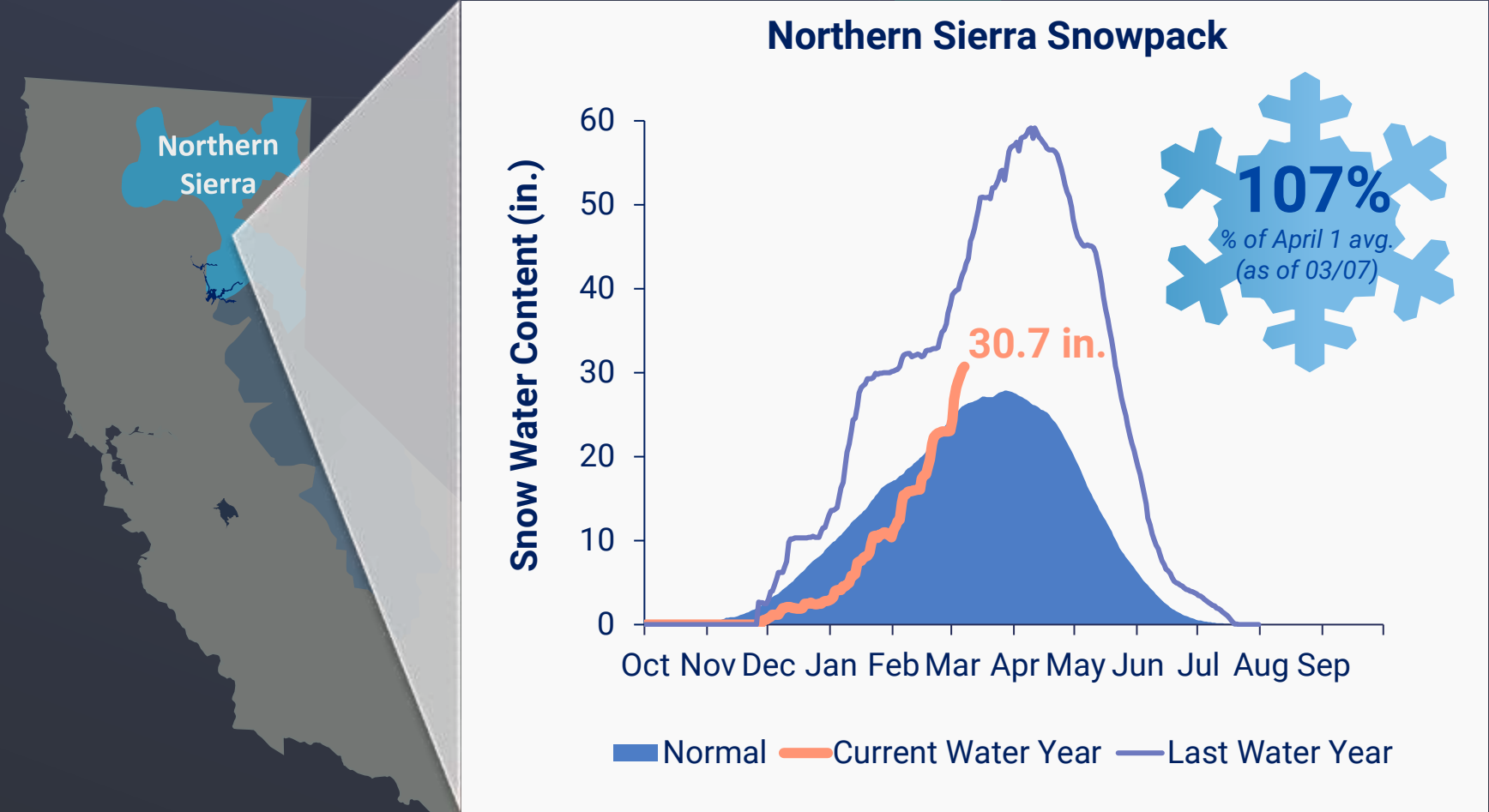
Imported Supply Watershed Conditions Continuing to Improve



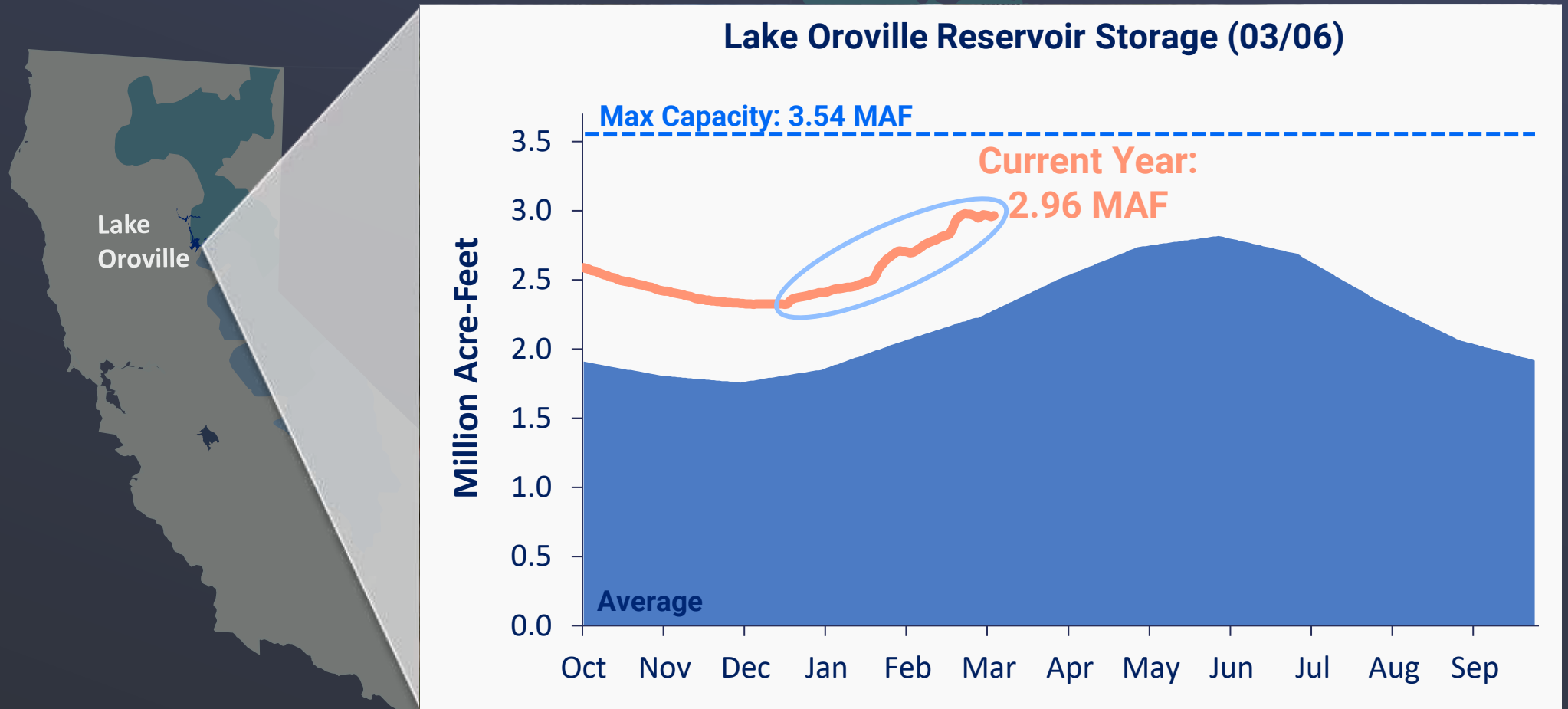
Imported Supply Watershed Conditions Continuing to Improve



Imported Supply Watershed Conditions Continuing to Improve



Flood Control Releases Made as Lake Oroville's Levels Rise



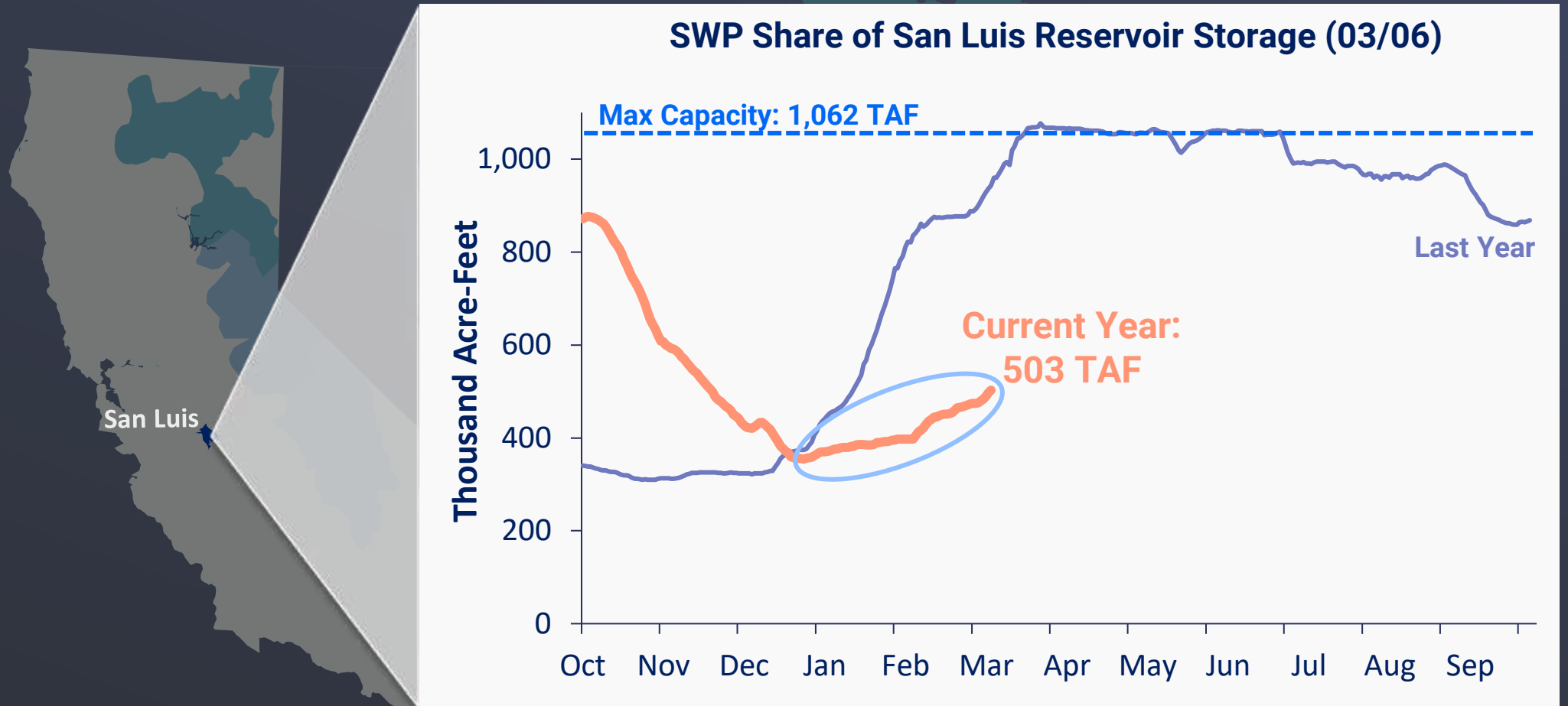
March 11, 2024

One Water and Stewardship Committee

Item #6c Slide 10

Note: Images not drawn to scale.

Modest Improvements in SWP Share of San Luis



March 11, 2024

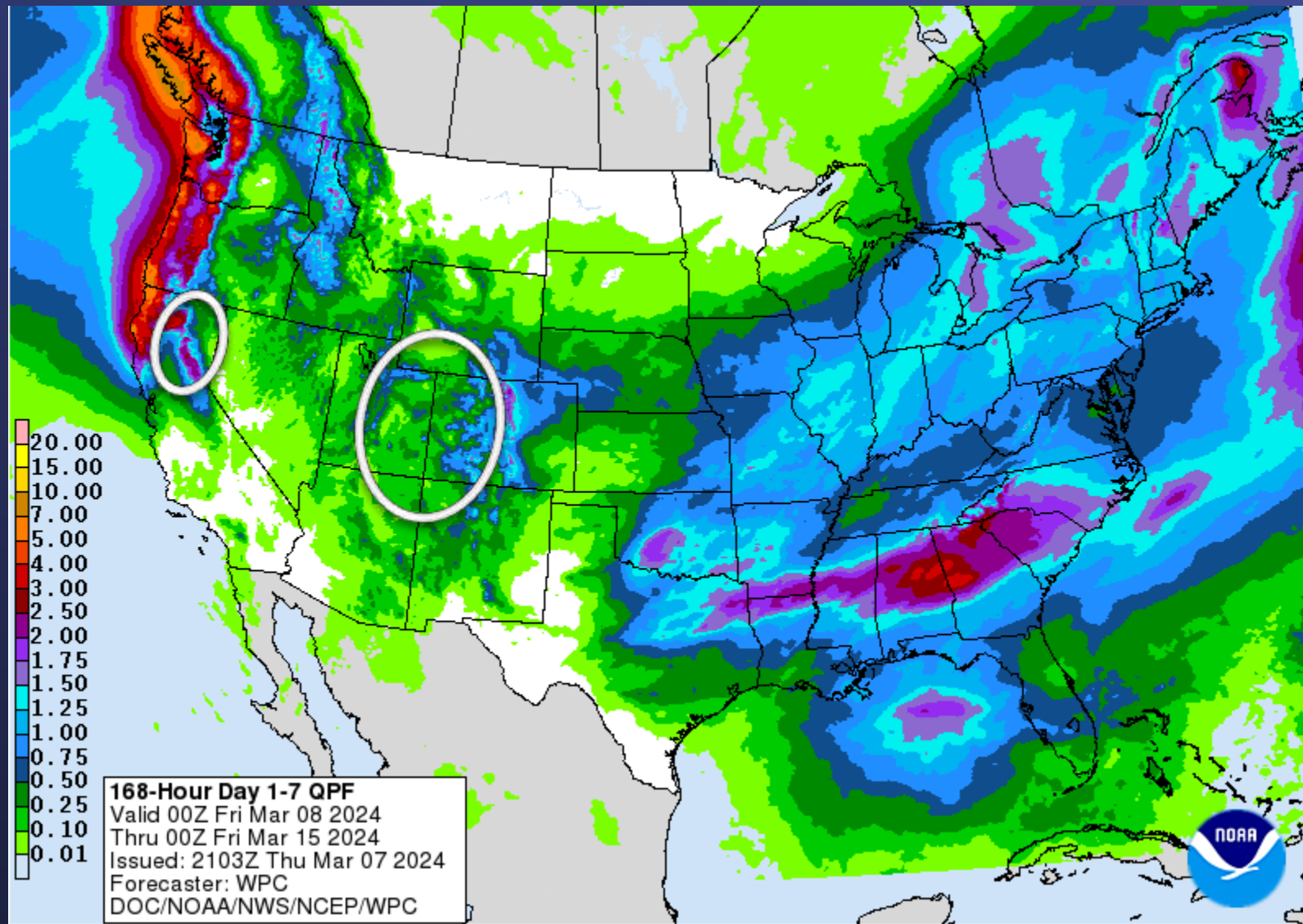
One Water and Stewardship Committee

Item #6c Slide 11

Note: Images not drawn to scale.

Additional Precipitation in the Forecast

March 8 – March 15





2024 Water Surplus & Drought Management



WSDM Update

SWP Table A Allocation Increases to 15%

- SWP Allocation increased from 10% to 15%
 - Update reflects hydrologic conditions as of February 1
 - Incorporates improved hydrologic conditions from late December and January storm events
- Additional increases to the SWP Allocation expected
 - March allocation update will include February's storm events and the continued improvements to the snowpack conditions
 - Regulatory obligations continue to impact the availability of supplies

2024 Water Supply/Demand Balance: **Regional View**

