



Engineering, Operations, & Technology Committee

Sepulveda Feeder PCCP Rehabilitation – Reach 2

Item 8-1

January 12, 2026

Presented by: Cathy Chau

Item 8-1

Sepulveda Feeder PCCP Rehabilitation – Reach 2

Subject

Review and consider Addendum No. 6 to the certified 2017 Programmatic Environmental Impact Report for the Prestressed Concrete Cylinder Pipe Rehabilitation Program; award a \$61,242,000 construction contract to J.F. Shea Construction Inc. for PCCP rehabilitation of Sepulveda Feeder Reach 2; and authorize an agreement with HDR Engineering Inc. for a not-to-exceed amount of \$1,300,000 for technical support during construction

Purpose

Maintain distribution system reliability by mitigating existing PCCP vulnerability within Sepulveda Feeder Reach 2

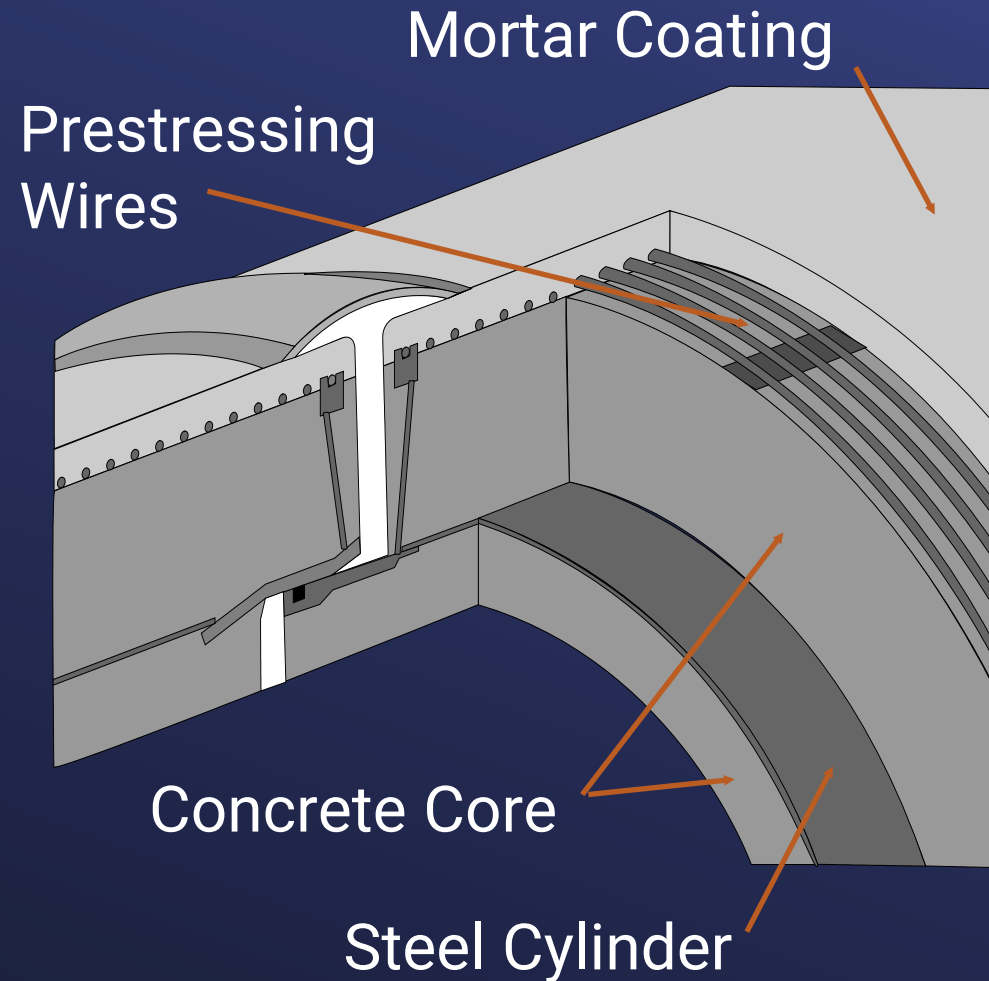
Recommendation and Fiscal Impact

Award a construction contract to reline 3.8 miles of PCCP in Sepulveda Feeder Reach 2, and authorize a new agreement for technical support during construction

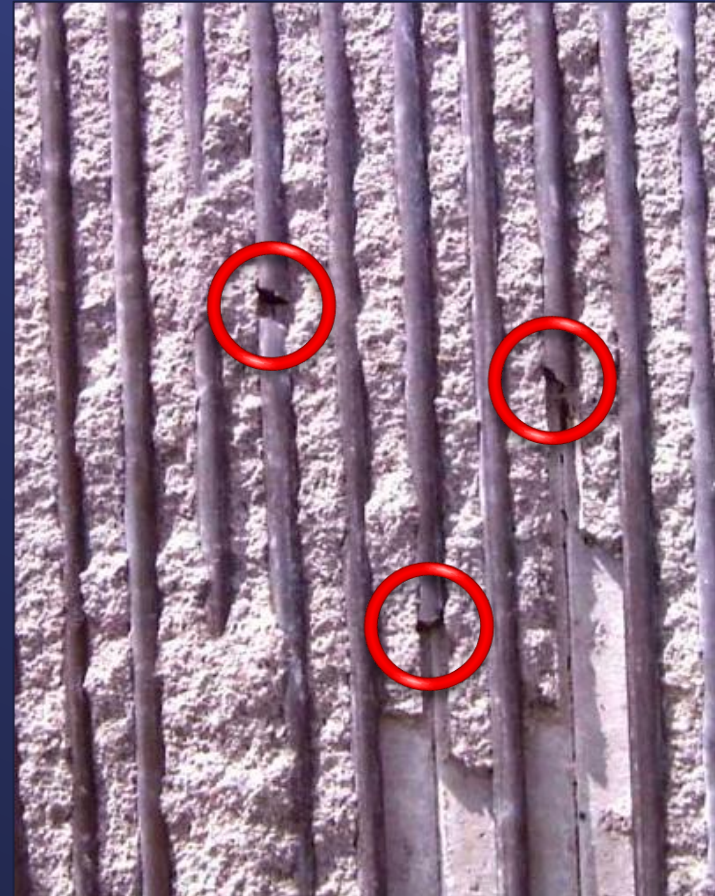
Fiscal Impact – \$80 M

Budgeted

Prestressed Concrete Cylinder Pipe (PCCP)



Broken
Prestressing Wires



PCCP Failures



Washington Suburban Sanitary Commission
60" PCCP Failure 2013



Great Lakes Water Authority
120" PCCP Failure 2022

Location Map



Sepulveda Feeder PCCP Rehabilitation – Reach 2

Background

- 84 to 150-inch PCCP & welded steel pipe
- 42 miles constructed in 1970s
- Crosses several freeways through dense urban areas



Sepulveda Feeder Reach 2

- April 2025 – performed electromagnetic inspection
- May 2025 – report identified 48 pipe segments, including 12 newly distressed segments since 2018 inspection
- Risk of stray currents



Sepulveda Feeder PCCP Rehabilitation – Reach 2



Alternatives Considered

- Considered Alternative – Rehabilitate only the most critical segments
 - Risk of stray currents from nearby utilities will require the rest of Reach 2 to be rehabilitated at some time
 - Repeated excavation, traffic control, & member agencies' service disruption in the same vicinity
- Selected Alternative – Reline the entire 3.8-mile reach
 - Cost-effective approach that manages risks
 - Minimizes service interruption to member agencies & the public

Sepulveda Feeder
PCCP Rehabilitation
– Reach 2

Contractor Scope of Work

- Line approximately 3.8 miles of existing PCCP
- Procure coiled steel liner
- Construct four temporary pipe access sites
- Construct four new maintenance holes & enlarge two existing ones
- Relocate three air release & vacuum valves
- Surface restoration



Typical Pipe Access Site

Sepulveda Feeder
PCCP Rehabilitation
– Reach 2

Metropolitan Scope of Work

- Fabrication inspection
- Construction management/inspection
- Submittal review
- Conduct shutdown & dewatering
- Pipeline disinfection & return to service
- Public outreach & program management

Bid Results

Specifications No. 2010

Bids Received	November 5, 2025
No. of Bidders	3
Lowest Responsible Bidder	J.F. Shea Construction Inc.
Low Bid	\$61,242,000
Range of Other Bids	\$85,653,000 to \$94,750,000
Engineer's Estimate	\$95,100,000
SBE Participation Level	7%

Sepulveda Feeder
PCCP Rehabilitation
– Reach 2

HDR Engineering Inc. – New Agreement

- Selected based on RFP 1374
- Engineer of Record
- Scope of Work
 - Construction technical support
 - Review submittals & respond to requests for information
 - Prepare record drawings
- New agreement for a NTE amount of \$1.3 M
- SBE participation level: 25%

Allocation of Funds

Sepulveda Feeder PCCP Rehabilitation - Reach 2

Metropolitan Labor

Owner Costs (Proj. Mgmt., Contract Admin., Envir. Support) \$ 1,486,000

Construction Inspection & Support 6,699,000

Force Construction 4,128,000

Submittals Review, Tech. Support, Record Dwgs. 896,000

Materials & Supplies 300,000

Incidental Expenses 274,000

Professional/Technical Services

HDR Engineering Inc. 1,300,000

Parsons Constructors Inc. 350,000

Helix Group Inc. 175,000

Public outreach consultant 150,000

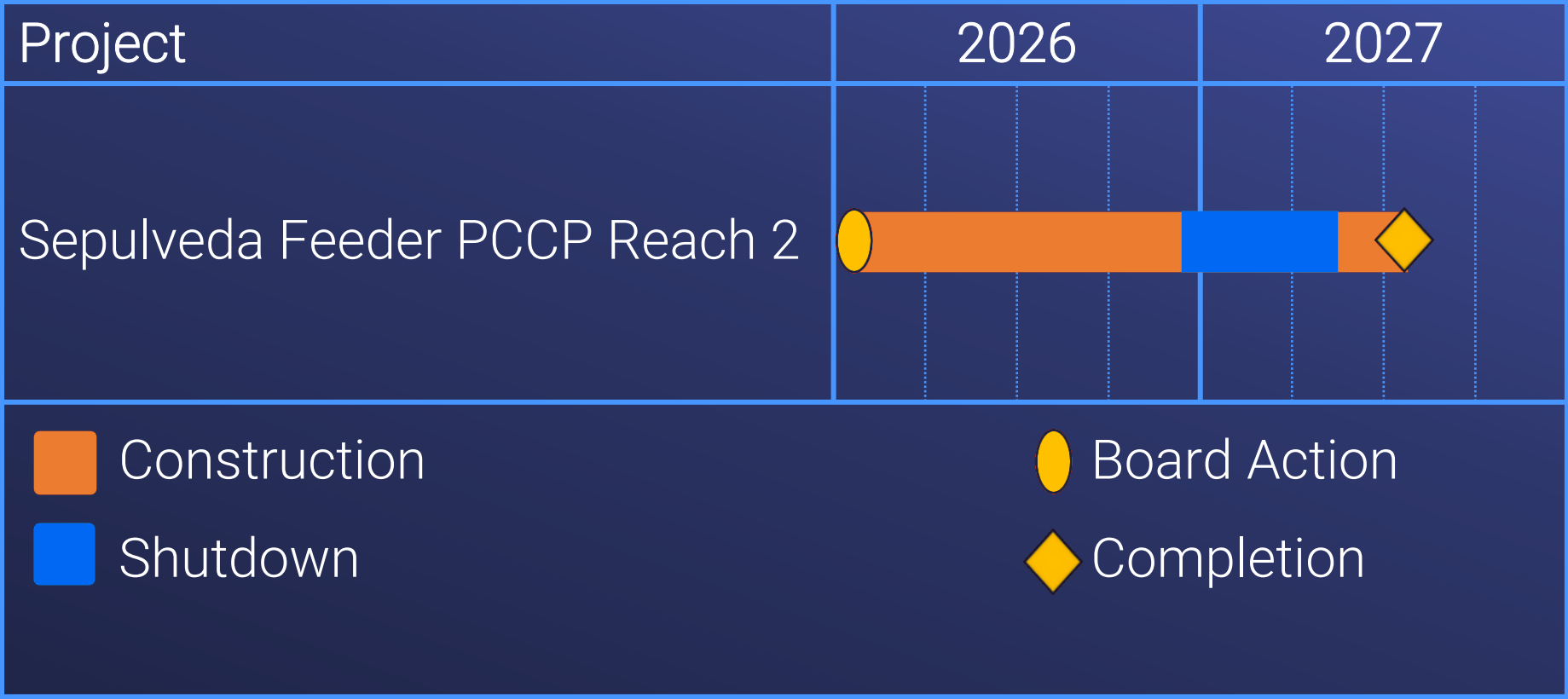
Contract

J.F. Shea Construction Inc. 61,242,000

Remaining Budget 3,000,000

Total \$ 80,000,000

Project Schedule



Board Options

- Option #1

Review and consider Addendum No. 6 to the certified 2017 Programmatic Environmental Impact Report for the Prestressed Concrete Cylinder Pipe Rehabilitation Program, and

- a. Award a \$61,242,000 contract to J.F. Shea Construction Inc. to rehabilitate Sepulveda Feeder Reach 2.
- b. Authorize an agreement with HDR Engineering Inc. for a not-to-exceed amount of \$1,300,000 for technical support during construction.

- Option #2

Do not award a construction contract to rehabilitate the Sepulveda Feeder PCCP Reach 2, and do not authorize an agreement for technical support during construction at this time.

Recommendation

- Option #1

