



Subcommittee on Pure Water Southern California and  
Regional Conveyance

# Drought Mitigation Actions Portfolio Development Update

Item 3a

September 26, 2023

# Presentation Outline

- Metropolitan's Commitments to Ensure Equitable Access to Supply and Storage Assets
- Measures to Meet the Commitments
- Development of Drought Mitigation Actions Portfolio
- Regional Conveyance Improvements Study Update
- Proposed Next Steps

# Metropolitan's Commitments

- Ensure equitable access to supply and storage assets
- Specifically, pursue balanced solutions to improve the SWPDAs' drought resilience
  - Building infrastructure
  - Increasing local supply availability
  - Expanding partnerships
  - Advancing water use efficiency

## Call to Action

*Metropolitan commits to ensuring equitable access to supply and storage assets by building infrastructure, increasing local supply availability, expanding partnerships, and advancing water use efficiency.*

Metropolitan's Board of Directors, therefore, affirms a Call to Action and directs the General Manager, in collaboration with the member agencies, to:

- Drive a decision towards a portfolio of specific projects and programs to address the problem statement noted above. The selected portfolio must include infrastructure improvements to deliver available water supplies to the SWP-dependent areas. The portfolio must also be balanced through new storage and supply programs and local supply development and management.
- Bring the recommended portfolio and associated implementation plans forward for Board approval in February 2023. Board approval should include modifying the CIP to include the new projects.
- Reprioritize CIP projects, spending plans, and Board approvals as needed to expedite work on critical and time-sensitive elements to address the supply and infrastructure inequity.
- Utilize alternative project delivery methods such as design-build, progressive design-build, or the construction manager/general contractor to counteract the negative impacts of severe and ongoing drought and the continuing impacts of climate change.<sup>24</sup>
- Provide quarterly reports to the Board on the status of the drought emergency projects.

Further, the Board directs the General Manager to take on these actions through a One Water approach, with robust Board oversight through the implementation phase of the IRP. Four elements of action include:

1. Upgrade water infrastructure to ensure equitable access to supply and storage assets.
2. Increase long-term water savings through water use efficiency and the transforming of non-functional turfgrass into a more appropriate Southern California landscape.
3. Advance development of local supplies for recycled water, groundwater recovery, stormwater capture, and desalination.

# Measures to Meet the Commitments

- A portfolio of specific projects and programs
  - Must include infrastructure improvements
  - Portfolio must also be balanced through new storage and supply programs and local supply development and management
- Four elements of action
  1. Upgrade water infrastructure to ensure equitable access to supply and storage
  2. Increase long-term water savings
  3. Advance development of local supplies for recycled water, groundwater recovery, stormwater capture, and desalination
  4. Align imported supply planning and actions for the full potential impacts of climate change
- Integration with CAMP4W process
  - Develop a solution to achieve equitable access for SWPDA agencies (Element 1)
  - Inform CAMP4W process with conservation, recycling, supply, & storage analysis and options (Elements 2, 3 & 4)



## Integration of Drought Mitigation Actions with CAMP4W process

**CAMP4W Themes** compile Board's and Member Agency's goals for the program

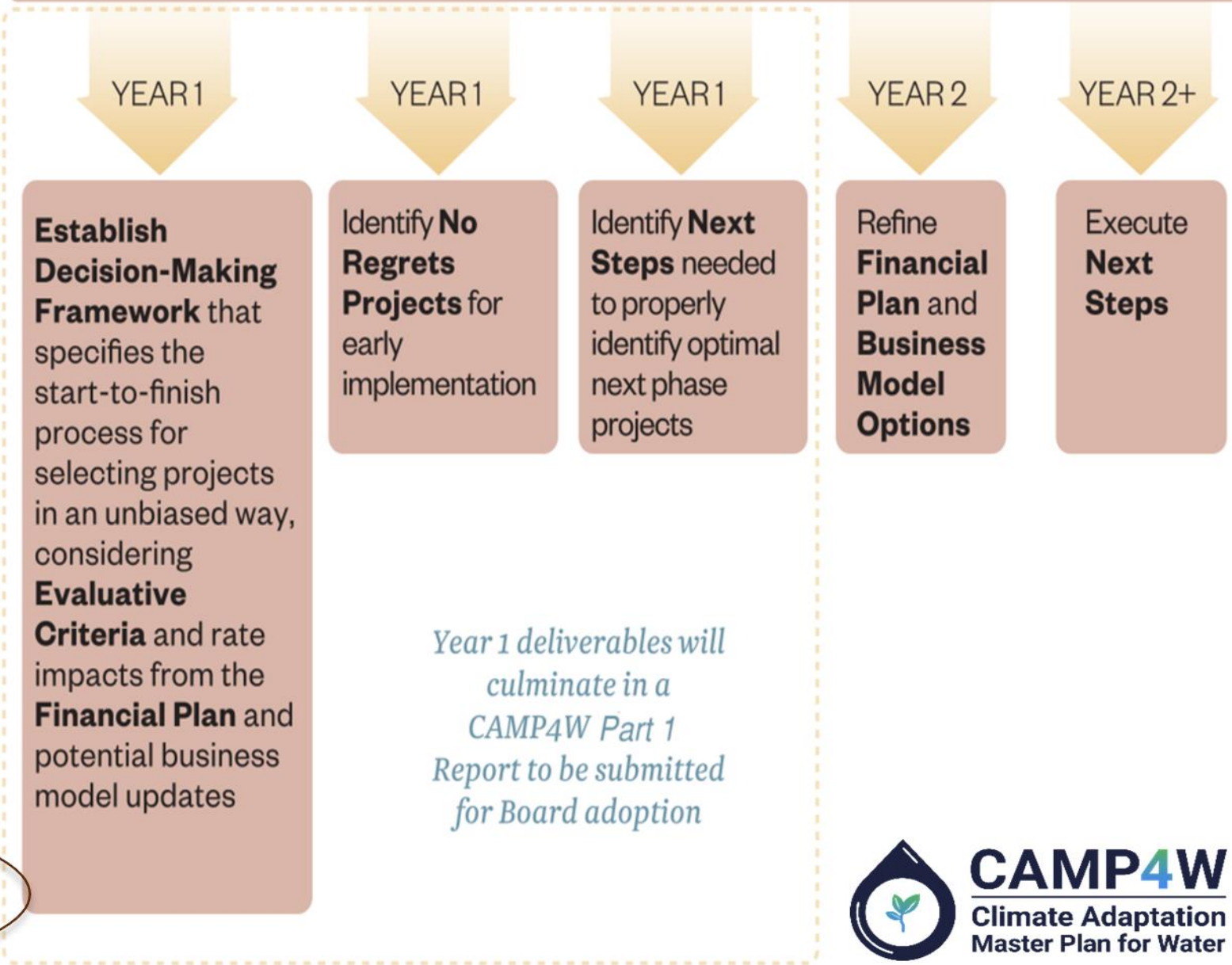
**Evaluative Criteria** will score and rank projects using Themes as guideposts

**Financial Plan** will evaluate the impact of risks and investments on rates.

**Business Model** options will consider Metropolitan's evolving role for the region

**Metropolitan Projects, Member Agency Projects**, and results from **Technical Studies** will identify projects being considered

## CAMP4W Process Overview



# Development of Drought Mitigation Actions Portfolio

Equitable  
Access

Drought Mitigation  
Actions

Inform  
CAMP

Regional Conveyance  
Improvements

Eastern SWP  
Dependent Areas

Western SWP  
Dependent Areas

Immediate  
Implementation

Further  
Development

Regional Supply and  
Storage Projects

Recycled Water

Storage

Groundwater

Desalination

Other Projects

# Regional Conveyance Improvements for Immediate Implementation

Project	Capacity	Estimated Cost	Planned Board Action	Anticipated Completion	Status
Wadsworth Bypass	Up to 120 cfs 87 TAF	\$23 M	N/A	2025	In construction
Inland Feeder-Rialto Pipeline Intertie		\$20 M	N/A	2025	In construction
Badlands Tunnel Surge Tank		\$25 M	Oct 2023	2025	In advertisement
Foothill Pump Station Intertie		\$26 M	Fall 2024	2026/2027	In final design (two- stage construction)
Sepulveda Feeder Pumping Project -Phase 1	Up to 60 cfs* 42 TAF	\$120 M	Fall 2024	2026	Design-build contract awarded
Shift of Burbank B-5 Supply to B-5A	Up to 7 cfs 5 TAF	\$7 M	Mid 2024	2026	Feasibility study completed
TVMWD Miramar Pumpback Upgrade	Up to 30 cfs 21 TAF	\$5M	TBD	TBD	Feasibility study

\*Capacity includes 30 cfs pump station capacity and 30 cfs water savings that would otherwise be delivered into the common pool to maintain water quality

# Regional Conveyance Improvements for Further Development

## Goals & Objectives

- Develop feasible Regional Conveyance Improvement alternatives
- Improve access to supplies and storage for delivery to the West Side SWP Dependent Area
  - Consider treated water and raw water conveyance systems and facilities
  - Integrate with new and potential water supplies (i.e., Pure Water Southern California and other regional recycled-water programs)
- Provide regional benefits to improve reliability and resilience



# Collaborative Process to Develop Solutions

More than 20 multi-agency workshops/meetings

Board Updates

Mar.  
2023

Jun.  
2023

Sep.  
2023

Focused Group of Participants

Meeting 1  
Goals expectations

Meeting 2  
Initial alternatives  
Screening criteria

29 initial alternatives

Meeting 3  
Screening result  
Assessment criteria

7 alternatives after the first screening

Meeting 4  
Assessment result  
Refinements

3 potential solutions  
(Combined Alternatives)

Meeting 5  
Recommendation

Drought Mitigation Planning Workshops – All Member Agencies

Workshops  
1 ~ 7

Workshop  
No. 8

Workshop  
No. 9

Workshops  
No. 10 & 11  
(10/20/23)  
(Nov. 2023)



# Regional Conveyance Improvements Study

## 7 Screened Alternatives



# Solutions Development

- Determine the capacity of new conveyance infrastructure by
  - Considering existing system limitations
  - Incorporating potential new supply sources
  - Meeting the recent high-demand period (2021) of SWPDA agencies
- Combine individual alternatives to achieve targeted capacity
- Apply selection criteria:
  - Equity
  - Timely
  - Regional benefits
  - Cost-effectiveness/affordability
- Three solutions selected for consideration:
  - Raw water solution
  - Treated water solution
  - Hybrid solution

Total Flow  
(cfs)

160

# Existing Supply & Committed Projects



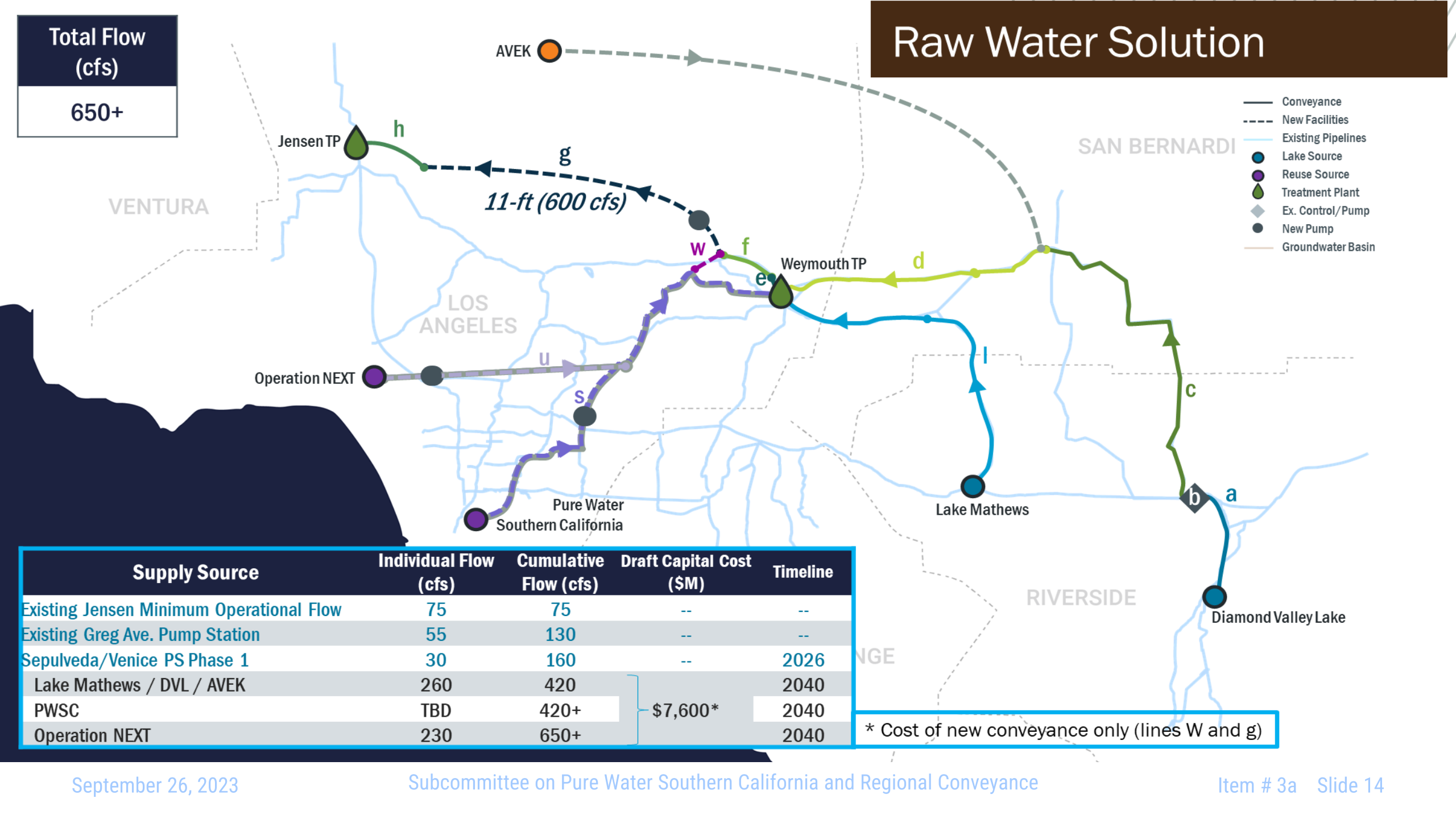
Supply Source	Individual Flow (cfs)	Cumulative Flow (cfs)	Timeline
Existing Jensen Minimum Operational Flow	75	75	--
Existing Greg Ave. Pump Station	55	130	--
Sepulveda/Venice PS Phase 1	30	160	2026



Total Flow  
(cfs)

650+

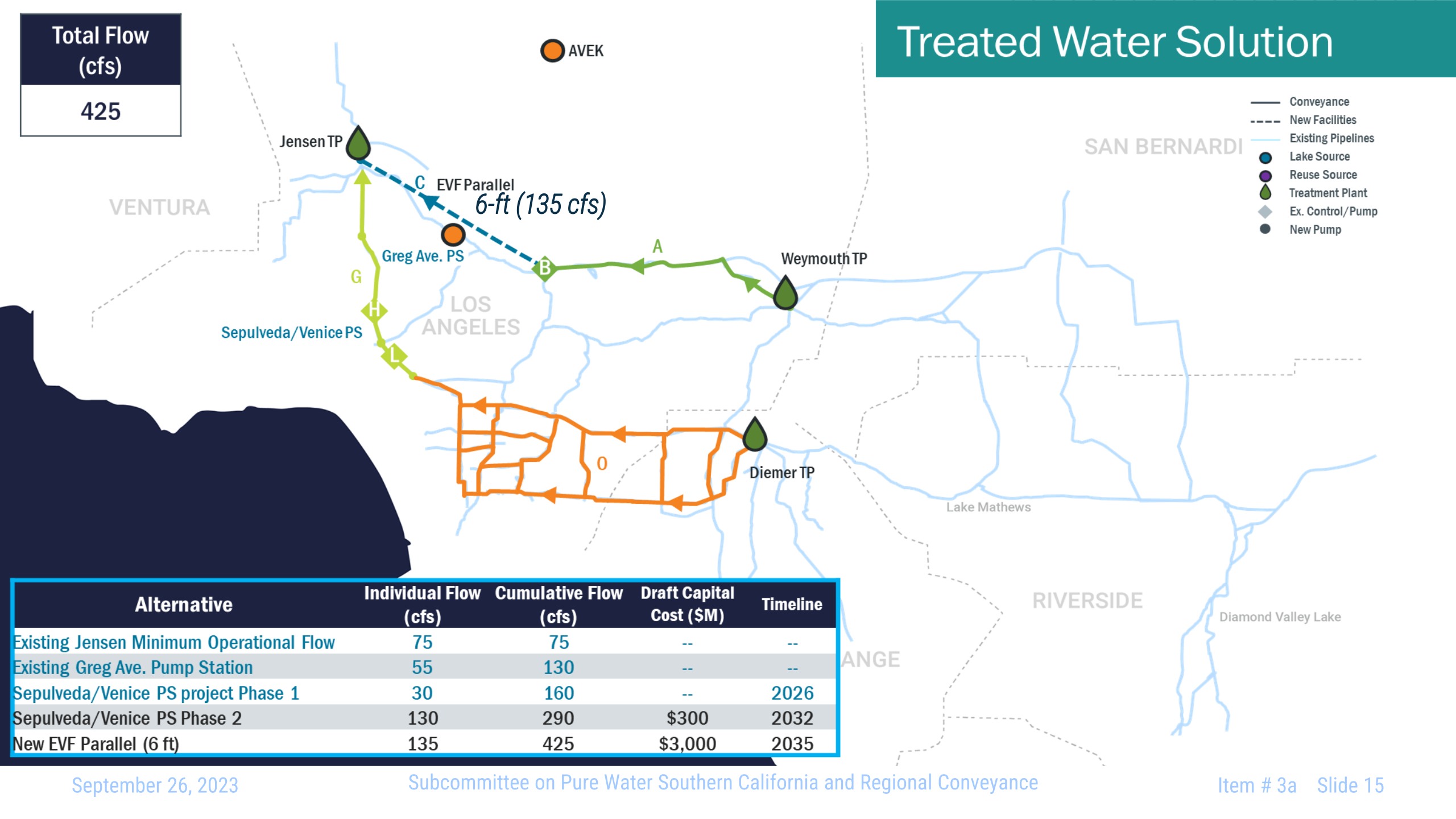
Raw Water Solution



Total Flow  
(cfs)

425

# Treated Water Solution

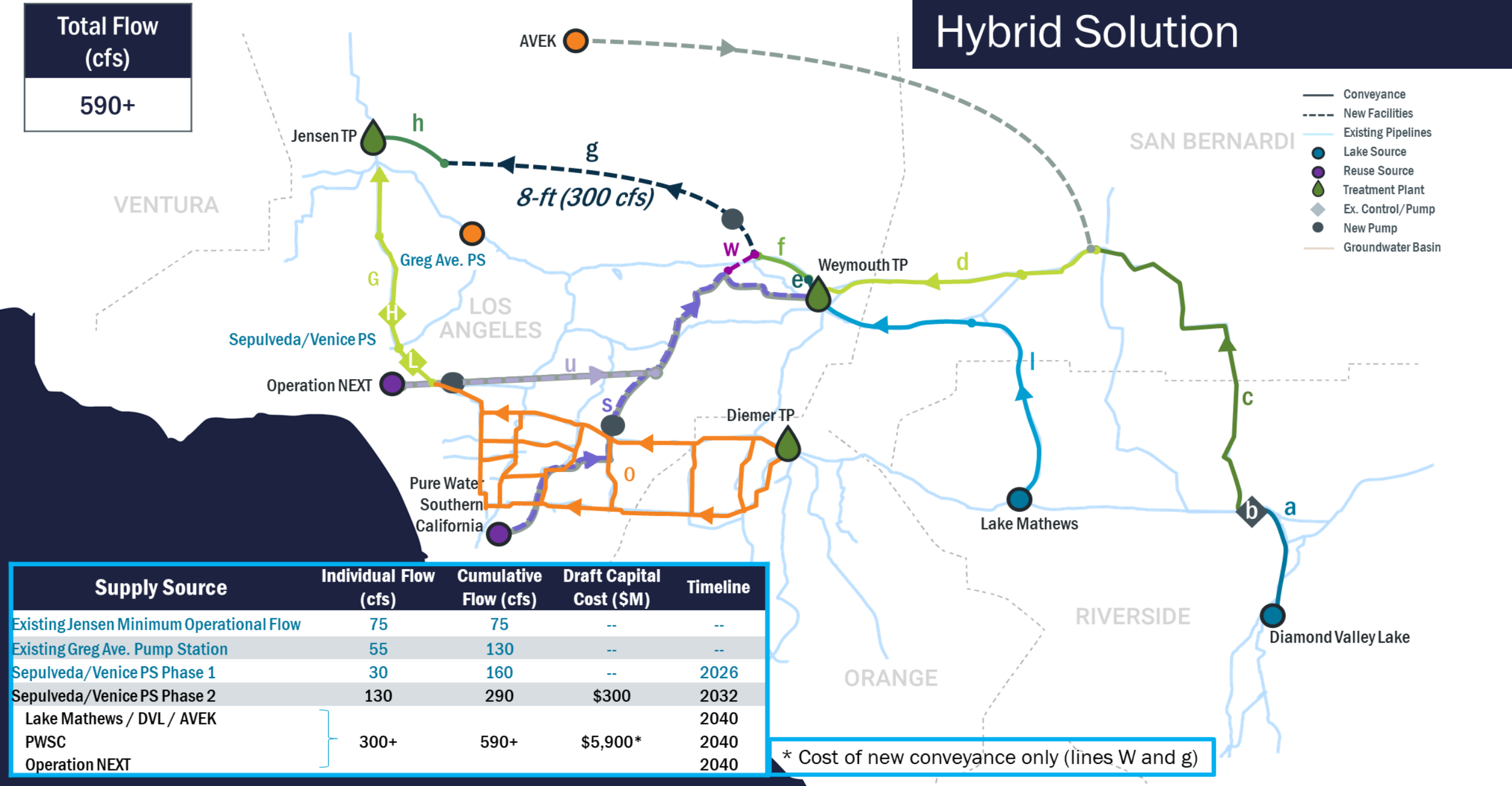


Total Flow  
(cfs)

590+

# Hybrid Solution

- Conveyance
- New Facilities
- Existing Pipelines
- Lake Source
- Reuse Source
- Treatment Plant
- Ex. Control/Pump
- New Pump
- Groundwater Basin

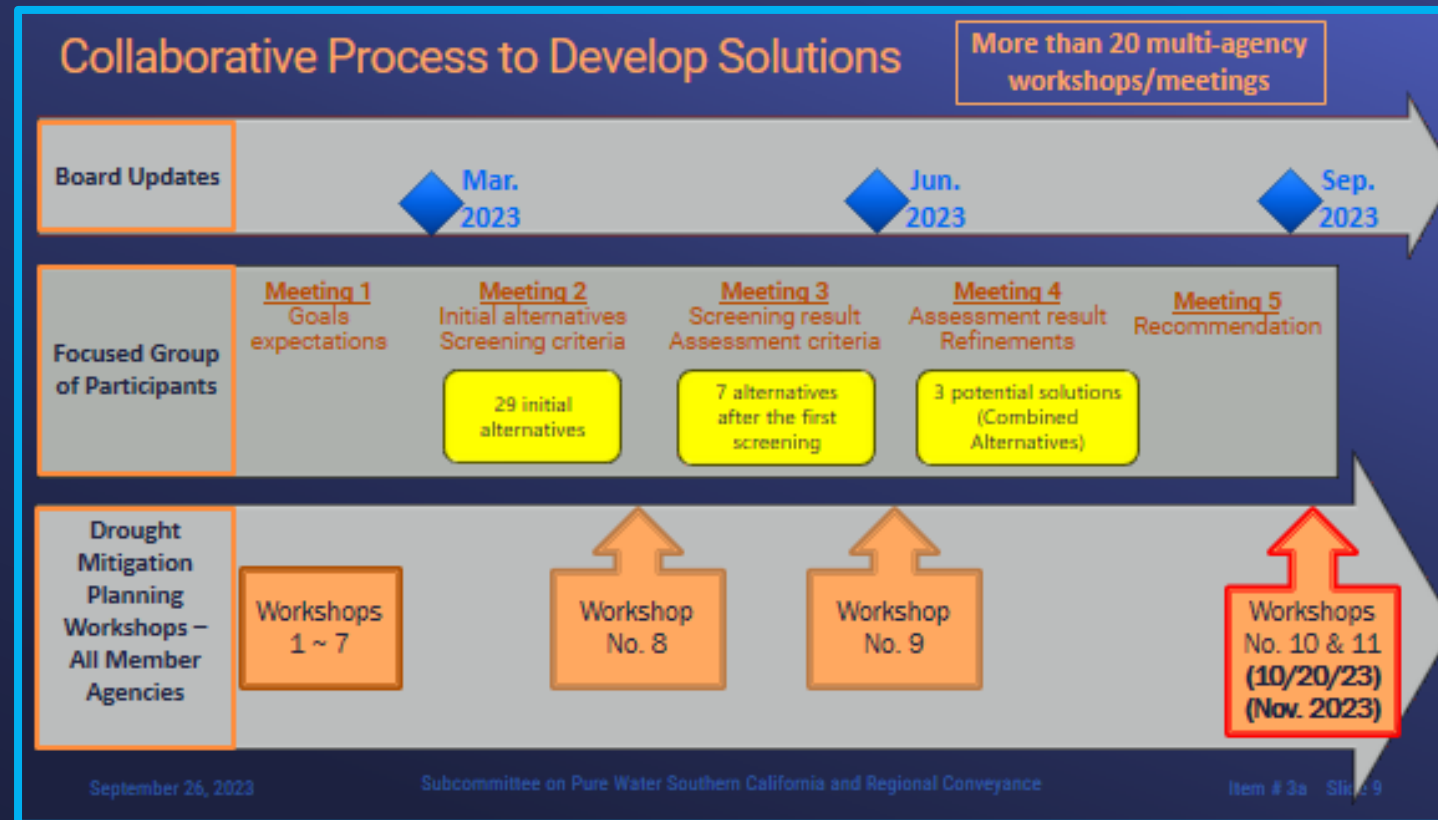


# Benefits of a Hybrid Solution

- Addresses issues identified in the August 2022 Call for Action
- Utilizes existing assets to deliver a timely partial solution to delivering treated water to the SWPDA on the West Side (Sepulveda Pipeline)
- Raw Water Pipeline Benefits:
  - Provides flexibility in moving SWP surplus (bi-directional pipeline)
  - Delivers raw water to member agencies in the north San Gabriel Valley and to the region's groundwater basins
    - From the West Branch
    - From CRA, East Branch, and DVL
    - From recycled water supplies
  - Improves the system's resiliency
    - Improves drought resilience and seismic resilience

# Proposed Next Steps

- Provide update at 9/28 Member Agency Managers Meeting
- Collaborate with all member agencies and receive feedback at Oct. workshop
- Report to the Subcommittee in November 2023
- Collaborate with all member agencies and receive feedback at November workshop





# Proposed Next Steps (cont.)

- Recommend actions to the Board in the first quarter of 2024
  - Create and fund a new program in the CIP
    - Part of the upcoming FYs 2024/2025-2025/2026 CIP budget process
    - Program will contain all Drought Mitigation Actions
  - Apply a hybrid approach for the Regional Conveyance Improvements
    - Amend current CIP to include treated water components
      - Sepulveda and Venice Pump Stations (160 cfs ultimate capacity)
      - Removing network constraints (Inglewood lateral)
    - Continue developing the raw water components of Regional Conveyance Improvements
      - Determine benefits, feasibility, capacity, alignment, etc.

